

Source: SSE, Wind, as of April 30, 2023.

Monthly News Highlights

Analysis of Business Performance of Companies on SSE Main Board in 2022 – Performance Growth Remains Resilient, Consumption and Investment Recovery Accelerates

April 29

<http://english.sse.com.cn/news/newsrelease/c/5721127.shtml>

Analysis of Business Performance of STAR Market Companies and Board Development in 2022 – Steady Growth Demonstrates Resilience, Innovation-Driven Starts a New Journey

April 29

<http://english.sse.com.cn/news/newsrelease/c/5721061.shtml>

2023 China-Singapore Capital Market Cooperation Roundtable Successfully Held in Chongqing

April 22

<http://english.sse.com.cn/news/newsrelease/c/5720706.shtml>

SSE 2022 Social Responsibility Report Released

April 21

<http://english.sse.com.cn/news/newsrelease/c/5720625.shtml>

The Optimized Trading Calendar of Shanghai-Hong Kong Stock Connect is Officially Launched

April 21

<http://english.sse.com.cn/news/newsrelease/c/5720573.shtml>

SSE Fully Implements Requirements of Independent Director System Reform

April 14

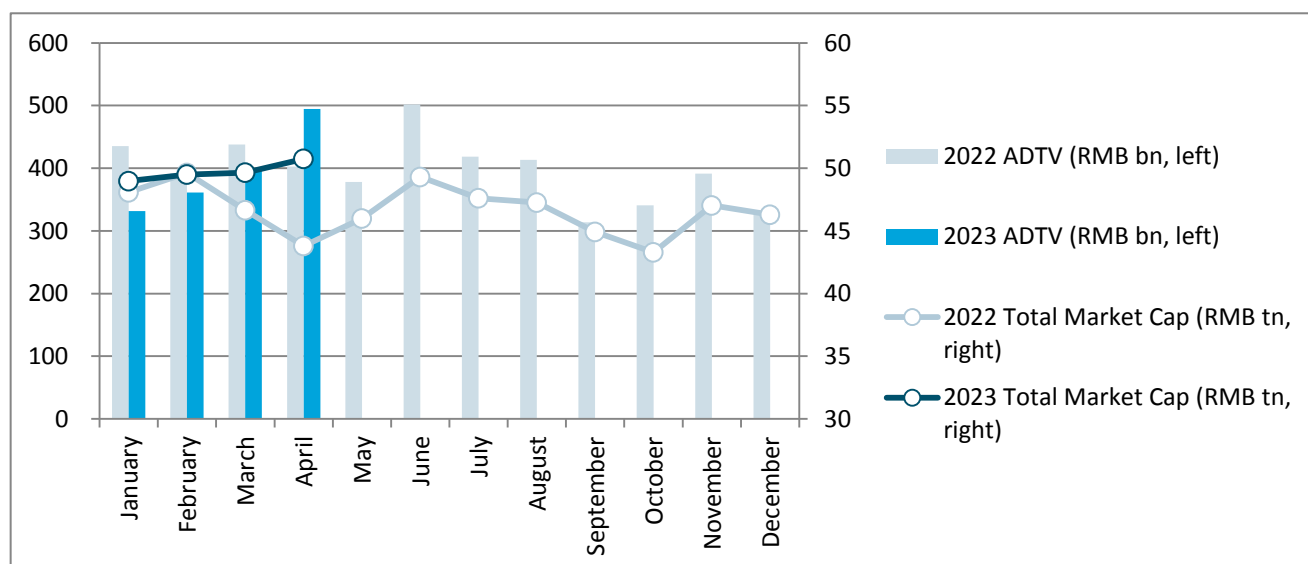
<http://english.sse.com.cn/news/newsrelease/c/5720108.shtml>

Equity Market

● Market Overview

Boards	No. of Listed Companies	Total Market Cap. (RMB tn)	PE (LYR)	Average Daily Trading Value (RMB bn)	Average Daily Trading Value MoM Change
Main Board A	1685	44.10	12.70	382.51	17.40%
STAR Market	519	6.65	48.54	111.78	53.12%
Total	2204	50.75	13.92	494.29	23.94%

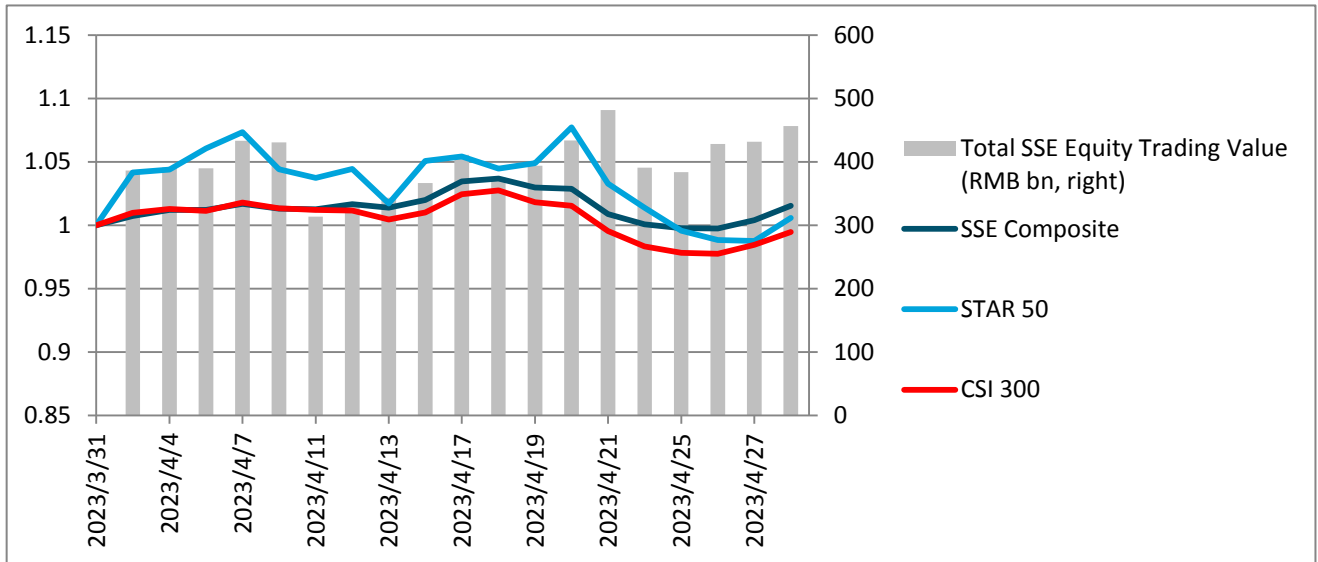
Shanghai A Shares (Main Board A & STAR Market) Market Cap & Trading Value



● Index Performance

Indexes	Closing Price	Monthly Performance	YTD Performance
SSE Composite	3323.27	1.54%	7.58%
SSE 50	2677.76	0.59%	1.61%
SSE 180	8631.32	1.39%	4.89%
STAR 50	1087.87	0.59%	13.33%
CSI 300	4029.09	-0.54%	4.07%

Index Performance & Equity Trading Value



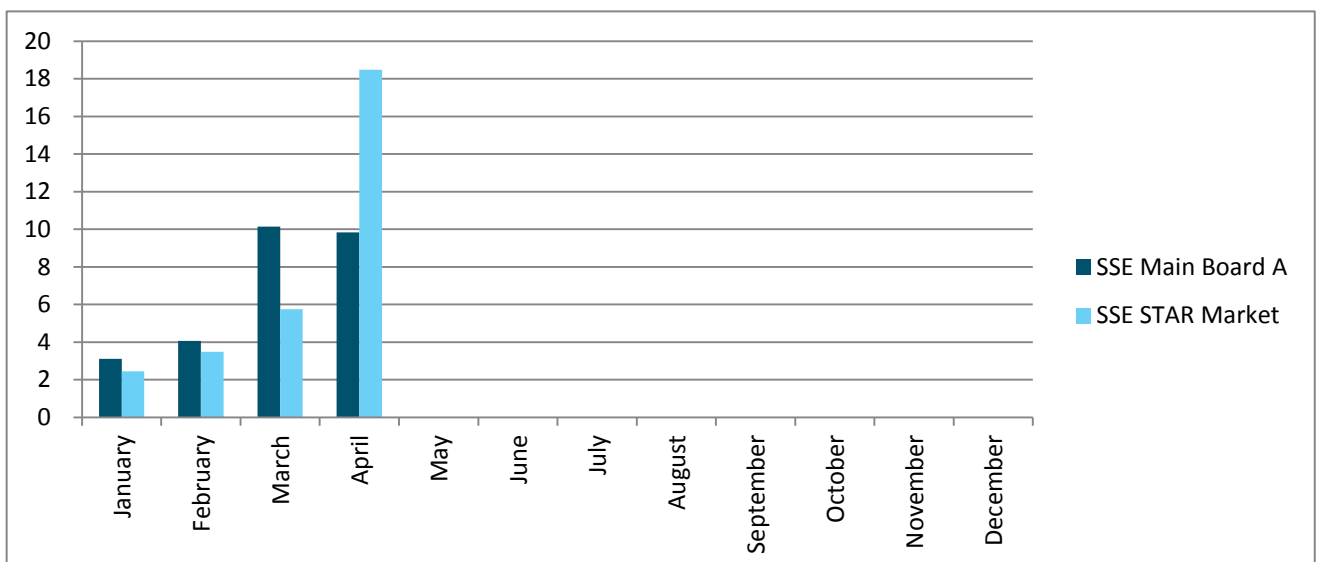
Note: the indexes are rebased to March 31, 2023.

● IPO

2022	Main Board A		STAR Market	
	No. of Newly Listed Companies	IPO Proceeds (RMB bn)	No. of Newly Listed Companies	IPO Proceeds (RMB bn)
January	2	3.12	3	2.46
February	3	4.07	3	3.49
March	9	10.15	3	5.75
April	6	9.84	9	18.47
Total	20	27.17	18	30.16

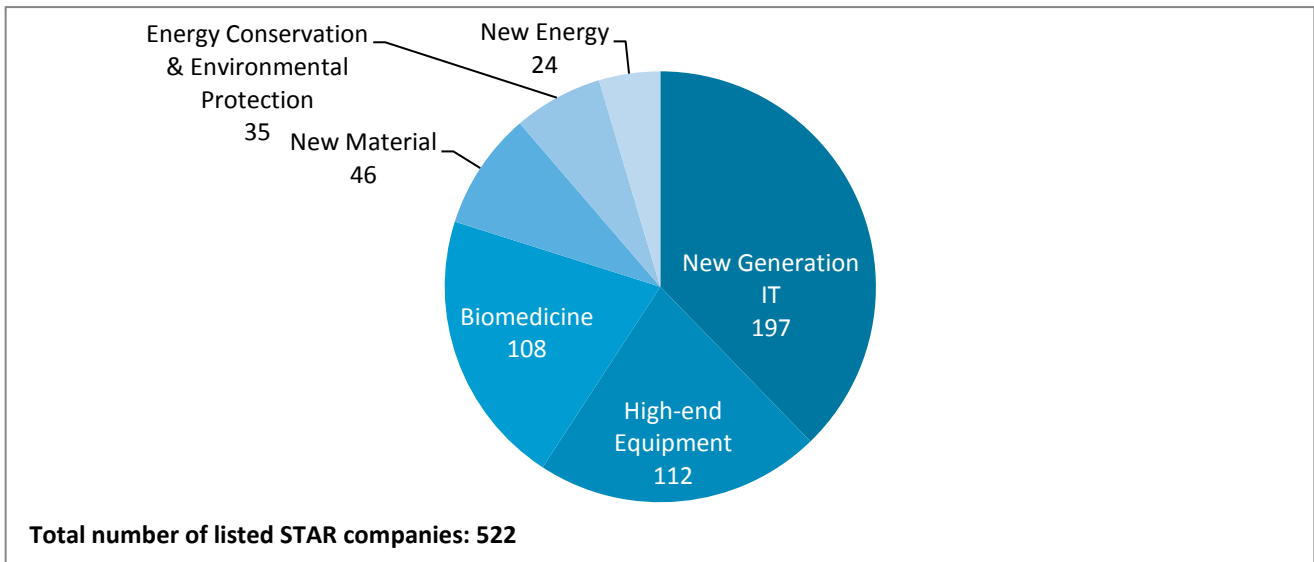
Note: a list of all the newly listed companies this month is available at the last page.

Monthly IPO Proceeds (RMB bn)

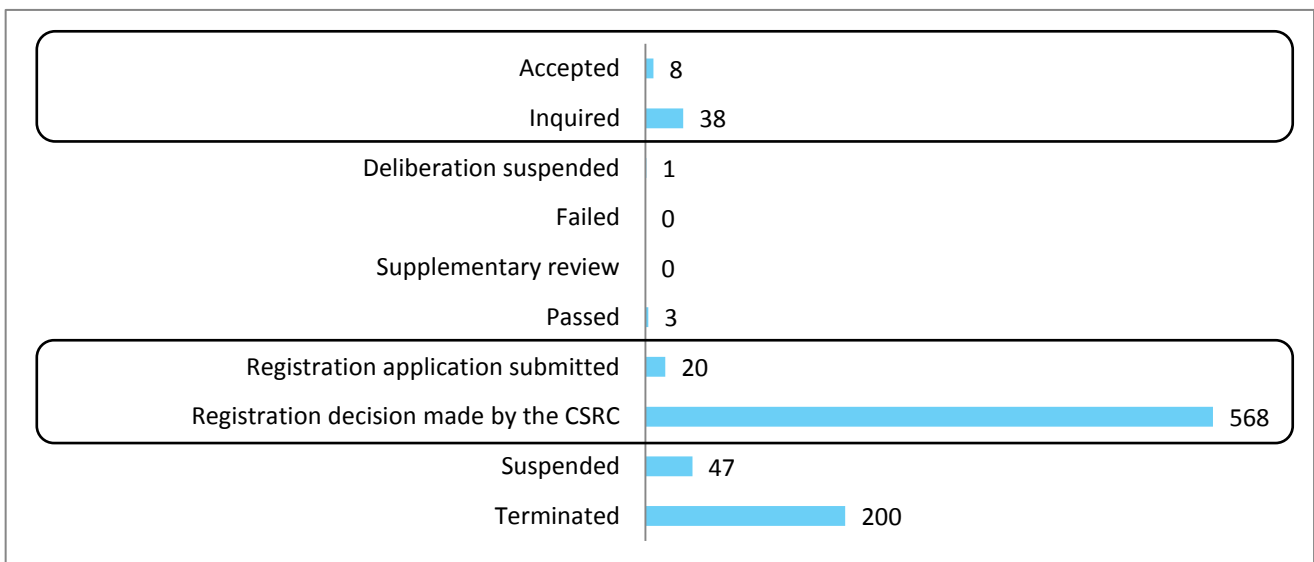


● STAR Market

STAR Market Sector Distribution (as of May 12)

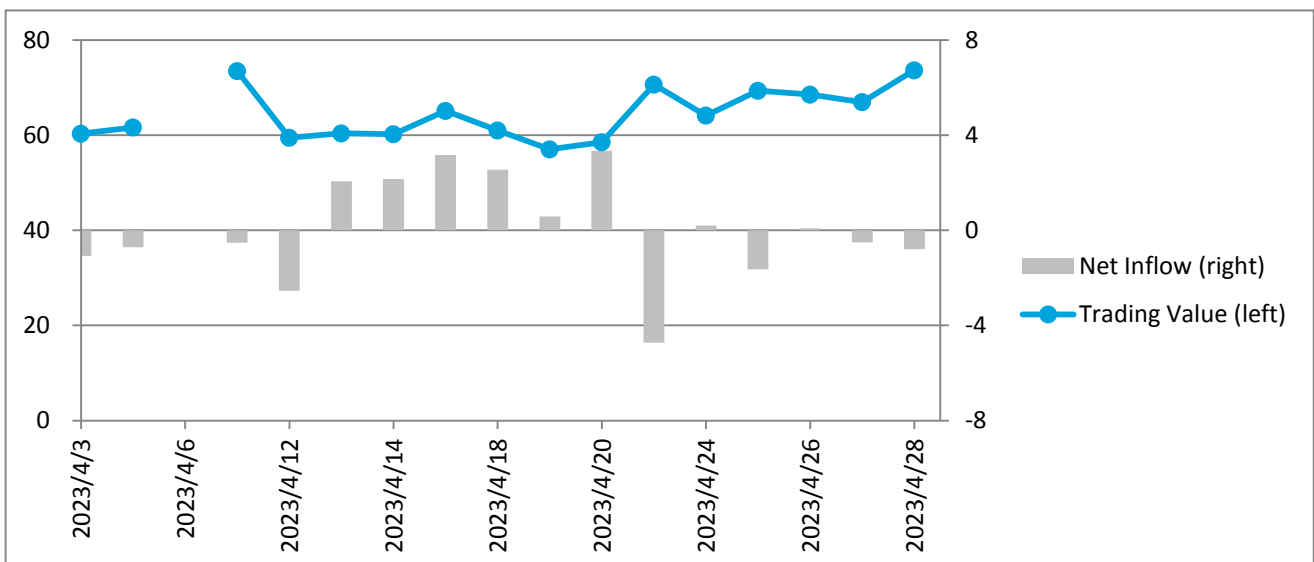


STAR Market IPO Pipeline (as of May 12)

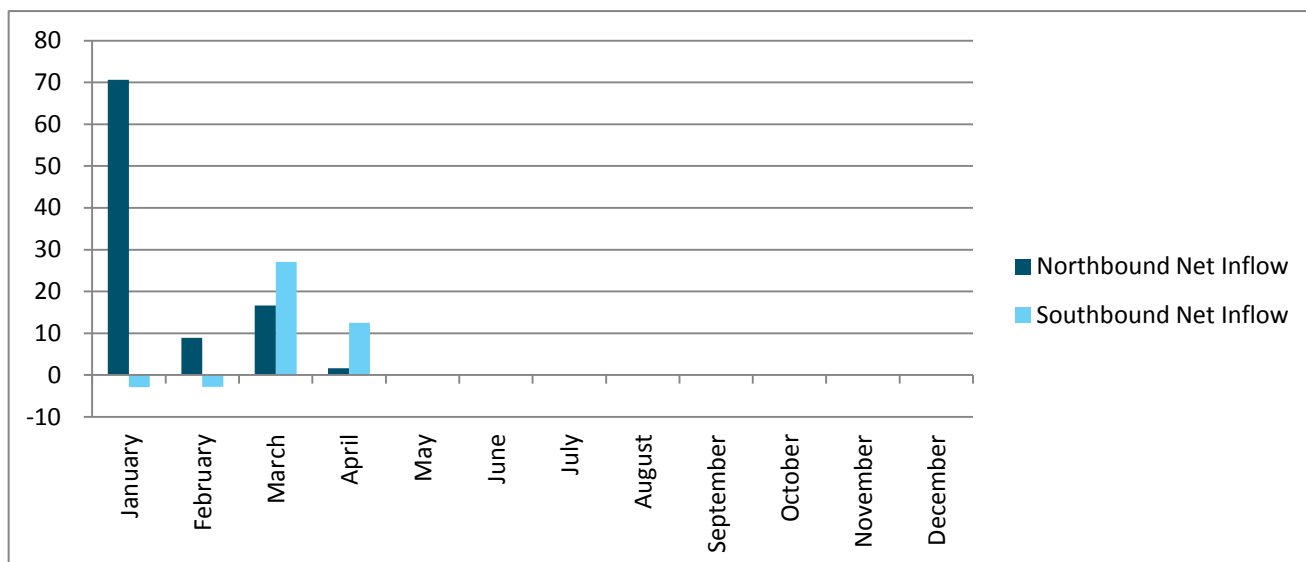


● Shanghai-Hong Kong Stock Connect

Daily Northbound Trading Value and Net Inflow (RMB bn)



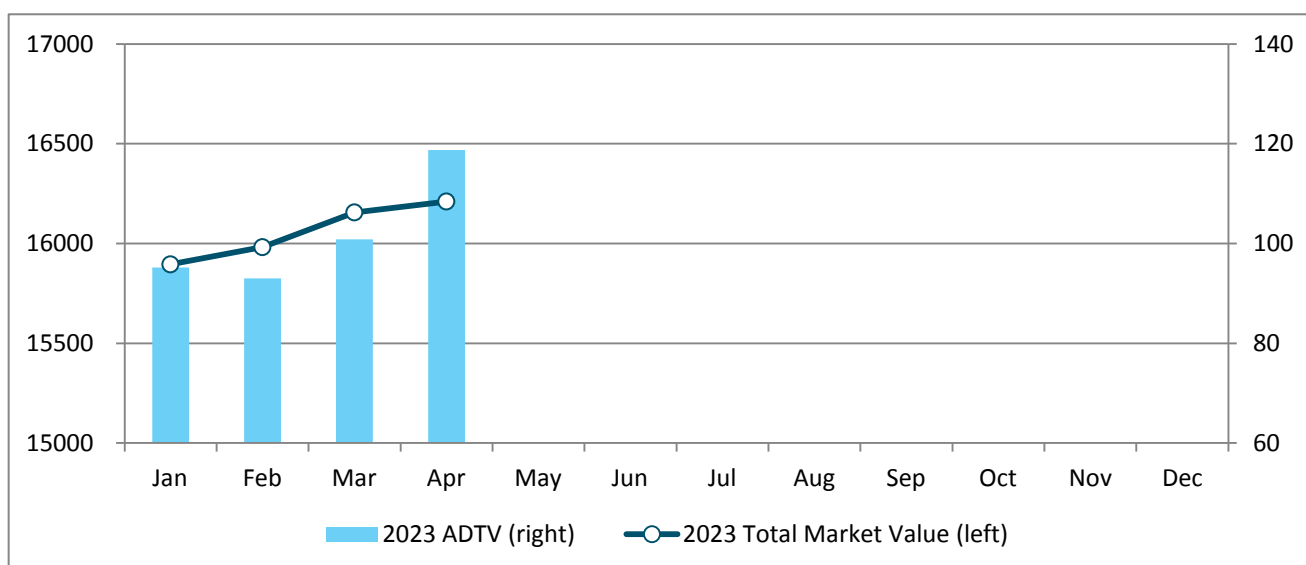
Monthly Northbound and Southbound Net Inflow (RMB bn)



Bond Market

Bond Types	Market Value (RMB bn)	MoM Change	Average Daily Trading Value (RMB bn)	MoM Change
Treasury bonds	868.87	-1.61%	16.96	183.03%
Local government bonds	1192.59	-0.59%	0.75	3.75%
Financial bonds	106.20	3.10%	1.23	162.47%
Corporate bonds	10955.32	0.54%	73.36	9.27%
Enterprise bonds	992.98	0.60%	4.10	10.26%
Convertible bonds	676.07	2.01%	19.51	-5.03%
Asset-backed securities	1418.45	-0.40%	2.83	24.70%
Total	16210.48	0.34%	118.74	17.74%

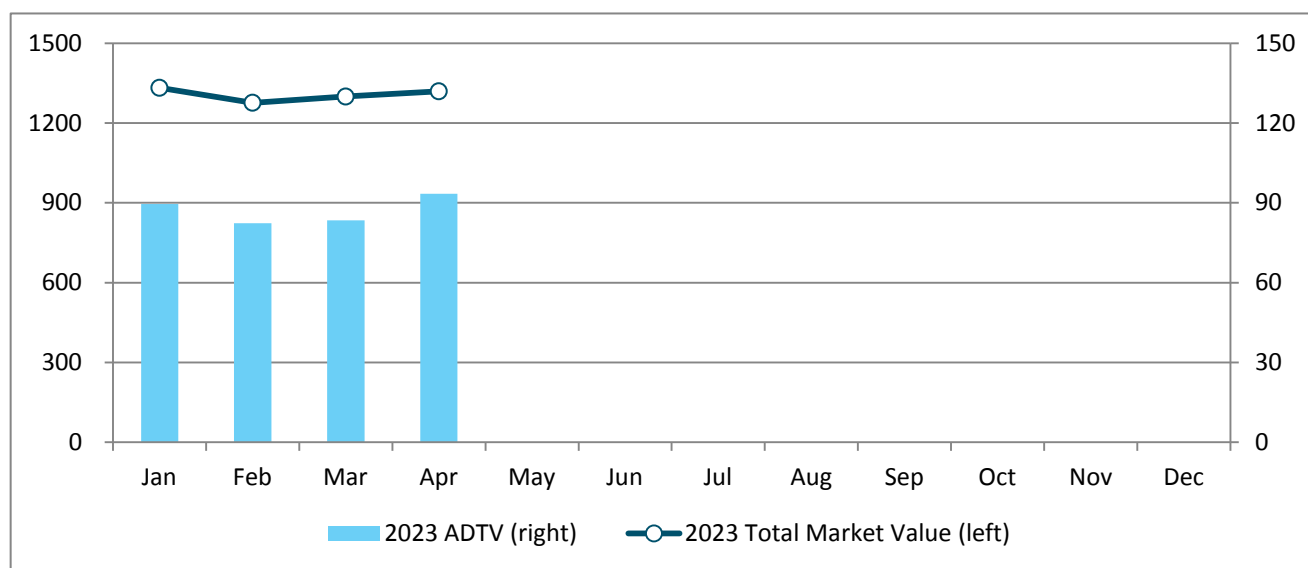
Monthly Total Market Value and Average Daily Trading Value (RMB bn)



ETF Market

ETF Types & REITs	No. of ETFs	Free-float Market Value (RMB bn)	MoM Change	Average Daily Trading Value (RMB bn)	MoM Change
Equity ETF	387	834.00	2.66%	34.76	23.97%
Bond ETF	12	32.47	24.31%	13.84	42.00%
Commodity ETF (gold)	8	11.86	0.09%	0.89	-28.75%
Money Market ETF	24	255.78	-3.65%	32.13	10.47%
Cross-Border ETF	53	155.79	-0.23%	11.53	-23.09%
Publicly Offered Infrastructure REITs	18	29.20	6.99%	0.30	-2.86%
Total	502	1319.09	1.52%	93.46	12.02%

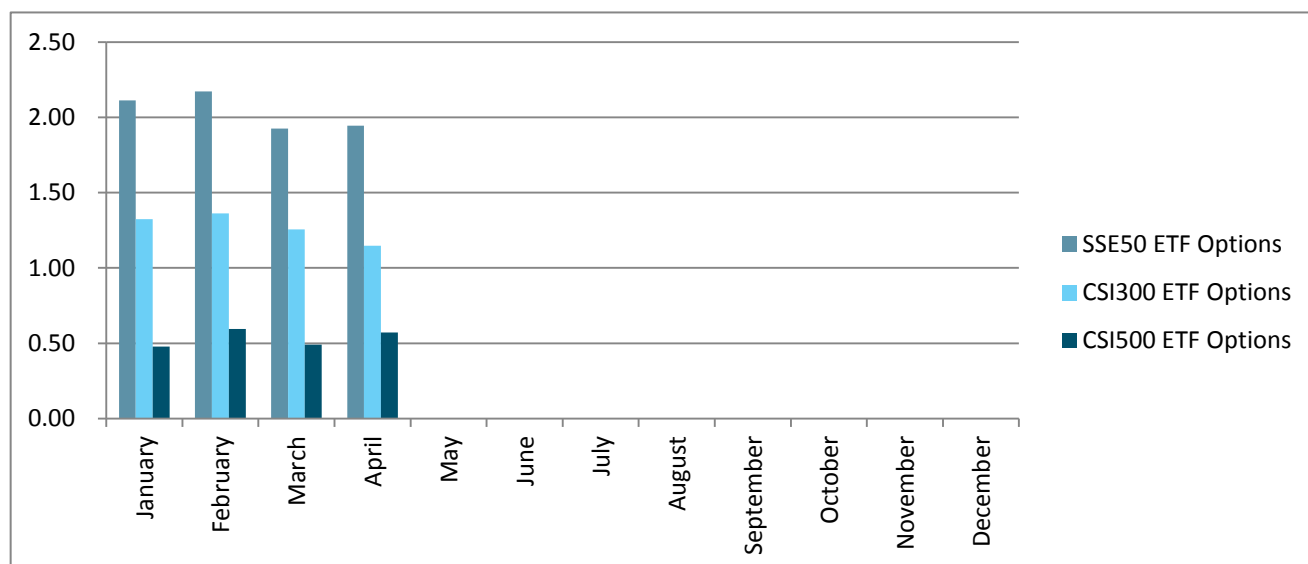
Monthly Total Market Value and Average Daily Trading Value (RMB bn)



Derivatives Market

Options	Average Daily No. of Contracts Traded (mn)	MoM Change	No. of Call Options Contracts (mn)	MoM Change	No. of Put Options Contracts (mn)	MoM Change	Put/Call Ratio
SSE 50ETF Options	1.94	0.92%	1.02	3.17%	0.93	-1.44%	91.03%
CSI 300 ETF Options	1.15	-8.55%	0.58	-10.02%	0.57	-7.00%	98.60%
CSI 500 ETF Options	0.57	16.64%	0.29	21.00%	0.29	12.60%	100.30%

Monthly Average Daily No. of Contracts Traded (mn)



Newly Listed Companies

Code	Name	Industry	Market Cap. (RMB bn)	Listing Day Return
Main Board				
601061.SH	Citic Metal Co., Ltd	Trading Companies & Distributors	39.30	70.82%
601065.SH	Jiangxi Salt Industry Group Co., Ltd	Commodity Chemicals	7.26	57.34%
601133.SH	Both Engineering Technology Co.,Ltd.	Construction & Engineering	7.84	110.63%
603125.SH	Jiangsu Evergreen New Material Technology Incorporated Company	Specialty Chemicals	5.86	71.67%
603135.SH	Zhongzhong Science&Technology(Tianjin)Co., Ltd.	Industrial Machinery	8.26	60.00%
603137.SH	Jiangsu Hengshang Energy Conservation Technology Co.,Ltd.	Construction & Engineering	2.44	59.25%
STAR Market				
688146.SH	Peric Special Gases Co., Ltd.	Industrial Gases	28.12	35.80%
688343.SH	Shenzhen Intellifusion Technologies Co., Ltd.	Application Software	24.44	137.04%
688352.SH	Hefei Chipmore Technology Co.,Ltd.	Semiconductors	16.15	43.97%
688433.SH	Farsoon Technologies Co., Ltd.	Industrial Machinery	10.98	15.90%
688478.SH	Crystal Growth&Energy Equipment Co.,Ltd.	Semiconductor Equipment	7.71	30.69%
688484.SH	Southchip Semiconductor Technology(Shanghai) Co., Ltd.	Semiconductors	17.36	48.41%
688507.SH	Shanghai Suochen Information Technology Co.,Ltd.	Application Software	9.88	2.62%
688535.SH	Jiangsu HHCK Advanced Materials Co.,Ltd.	Semiconductors	5.07	79.00%
688539.SH	Nanjing Gova Technology Co., Ltd.	Electronic Components	5.34	-8.42%

Edited by LI Tianfang, CHEN Yinghui, and WAN Sijia, Dept. of International Affairs, Shanghai Stock Exchange.

Global Investor Services Team

Dept. of International Affairs

Shanghai Stock Exchange | 上海证券交易所

此文件仅发给指定收件人或机构。其内容可能包含某种享有法律特权或者需要保密的信息。对于任何未经本所明确书面授权而对本文件所载内容进行使用、披露、分发、变更之行为及由此产生的后果，本所概不承担任何责任。如您并非此文件的指定收件人或机构，请立即通知上海证券交易所，并立即销毁此文件。谢谢合作。一旦您收悉此邮件（传真），即表示无条件同意并接受上述所载的免责声明，以及上海证券交易所所在无需给予任何理由或事先通知的情况下，可随时修改、更新、变更或增补本免责声明。

The information contained in this communication is intended solely for the use of the individual or entity to whom it is addressed. It may contain legally privileged or confidential information. The Shanghai Stock Exchange is not liable for any use, disclosure, distribution of or alteration to the contents of this information that has not been expressly authorized in writing by the Shanghai Stock Exchange. If you are not the intended recipient, please inform the Shanghai Stock Exchange of the error and delete the contents immediately. Thank you.

By receiving the email (fax), you expressly agree to the disclaimer above and that the Shanghai Stock Exchange may modify, update, revise or supplement the disclaimer at any time without giving any reason or prior notice.