

SSE Newsletter

In this issue

- Monthly Highlights
- Market Updates
- Fund Raising
- Downloads

Monthly Highlights

- On December 13, the PBC and SAFE publicly solicited opinions on the regulations of the management of domestic securities investment funds by foreign institutional investors. (<http://www.safe.gov.cn/safe/2019/1213/14884.html>)
- On the occasion of its 29th anniversary, the SSE launched a new English official website. (<http://english.sse.com.cn>)
- On December 23, the CSI 300 ETF Options (whose underlying asset is Huatai PineBridge CSI 300 ETF, with the code of 510300) were officially launched.

Downloads

- [Notice on Amendments of "SSE Implementation Measures on Shanghai-Hong Kong Stock Connect Business"](#)

Market Updates

SSE Main Board

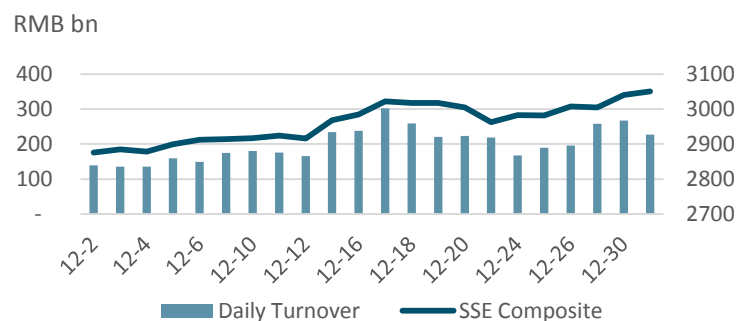
December at a Glance

Index	Closing Price	Monthly Gain/Loss	P/E Ratio
SSE Composite	3050.12	6.20%	13.11
SSE 180	8877.77	6.29%	11.34
SSE 380	4816.61	7.00%	18.24
CSI 300	4096.58	7.00%	12.48

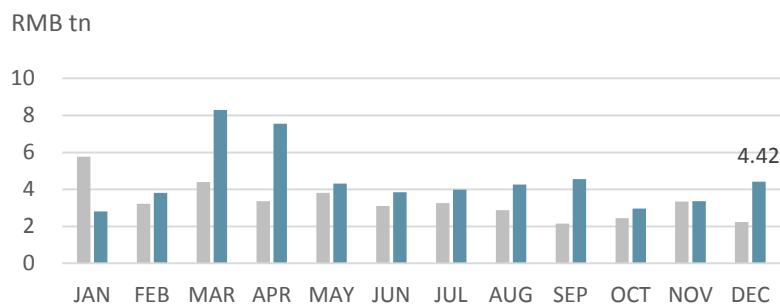
Note: as of Dec (2019/12/31)

Note: Unless otherwise stated, all the following graphs use the color grey to represent 2018 and indigo to represent 2019.

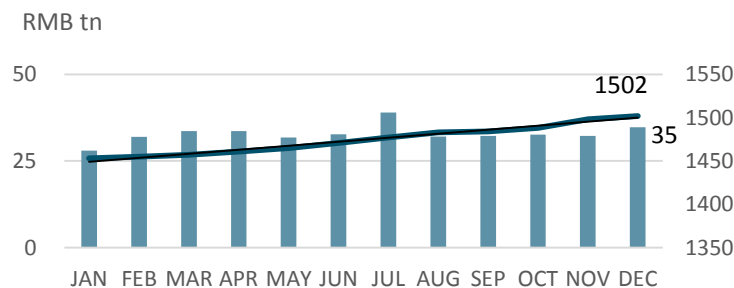
SSE Composite & Daily Turnover



Monthly Turnover



Market Cap. & No. of Listed Comps



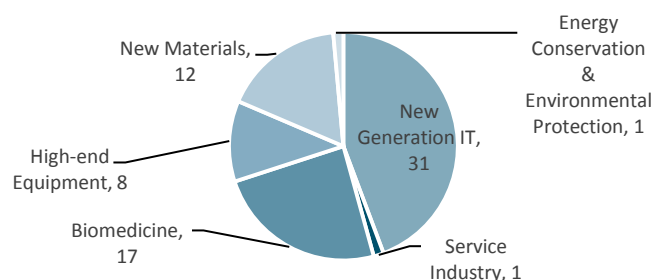
SSE STAR Market

Overview

Listed Companies	70
Market Cap	RMB 863.76 bn
Turnover	RMB 205.08 bn
After-Hours Fixed-Price Trading	RMB 108.88 mn

Note: as of Dec (2019/12/31)

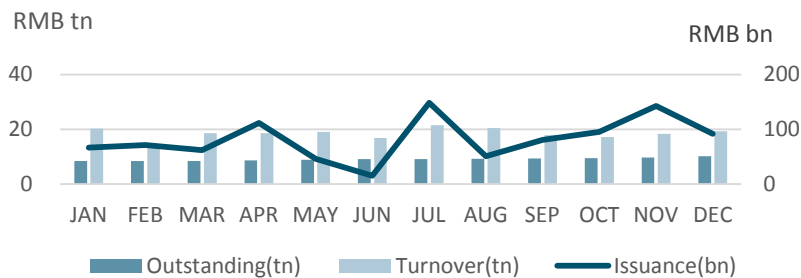
Sectorial Distribution



Note: as of Dec (2019/12/31)

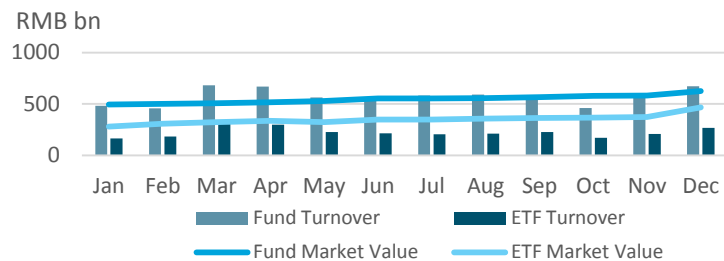
Bond Market

Monthly Turnover, Outstanding & Issuance



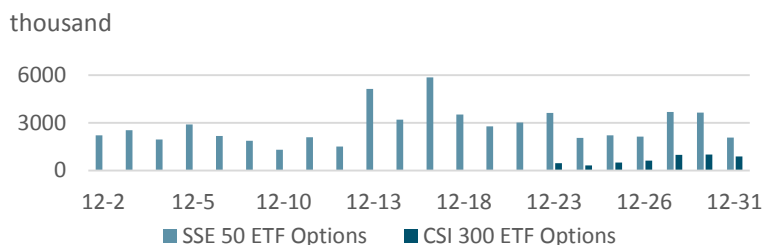
Fund Market

Monthly Turnover & Market Value



Derivatives Market

Daily No. of Contracts Traded



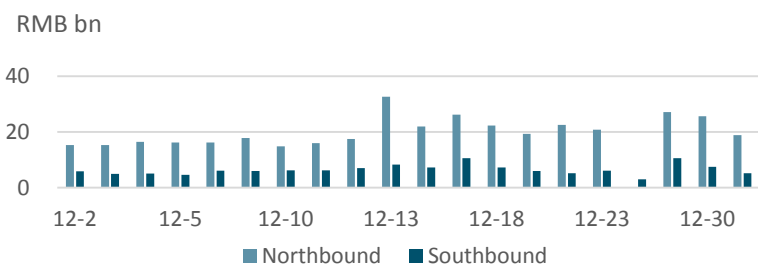
QFII/RQFII

Licenses Granted

	RQFII	QFII
Licenses Granted	223	293

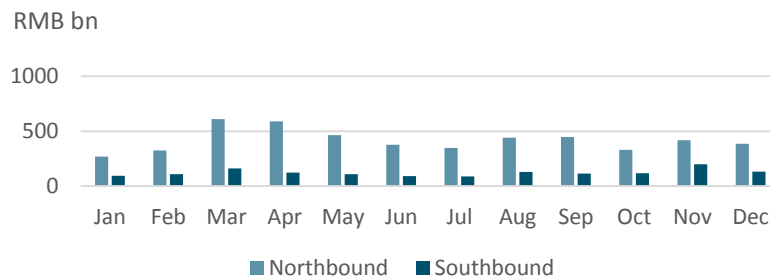
Shanghai-Hong Kong Stock Connect

Daily Turnover



Note: There is no trading data on some days due to holiday arrangements.

Monthly Turnover



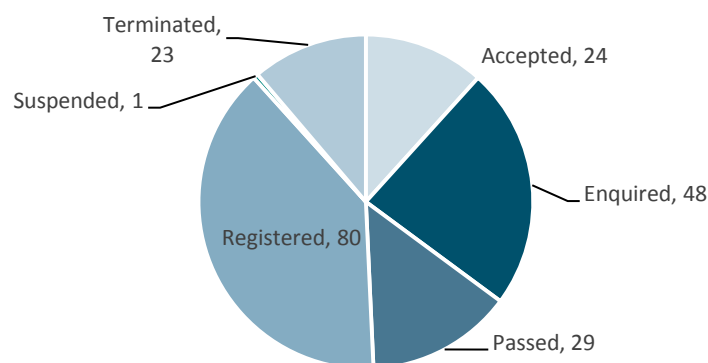
Fund Raising

Listing

		No. of Securities	Fund Raising (RMB bn)
SSE Main Board	IPO	5	32.8
	Refinancing	83	34.2
SSE STAR Market	IPO	14	9.48
	Refinancing	0	0
Bond		318	312

Note: 2019/12/01~2019/12/31

STAR Market Applications Update



Note: as of Dec(2019/12/31)

Disclaimer

Shanghai Stock Exchange endeavors to ensure that the data and other material in this document are correct and complete, but does not accept liability for any error made or omission from this document. Shanghai Stock Exchange shall not be liable for any claims or losses of any nature, arising indirectly or directly from use of the data or material on this document. The reader of this document shall acknowledge and agree that all proprietary rights in the information received shall remain the property of Shanghai Stock Exchange. Reproduction, redistribution and transmission of any information contained in this document is strictly prohibited. Use of this document is confirmation that you have understood and accepted these terms.

Source: SSE, CSRC, SAFE, Wind

Should you have any queries, please feel free to contact rsfang@sse.com.cn or yhchen@sse.com.cn.

For more information, please visit <http://english.sse.com.cn/overseasinvestors/introduction/briefintro/>.

