

SSE Newsletter

In this issue

- Monthly Highlights
- Market Updates
- Fund Raising
- Downloads

Monthly Highlights

- On Aug 7, the SSE compiled and released the list of self-regulatory and market service matters to improve the transparency of supervision and services.
- On Aug 11, the SSE held a seminar on pilot work of infrastructure REITs. Representatives from NDRC, CSRC, SAC, AMAC as well as from about 20 enterprises and 30 institutional investors attended.
- On Aug 28, the SSE and the China Securities Index Co., Ltd. announced that the SSE STAR 50 Index would be adjusted and the adjustment would be in effect on September 14.

Downloads

- [SSE STAR Market Companies Releases Semi-annual Reports: Rising Performance and Increasing R&D Investment](#)

Market Updates

SSE Main Board

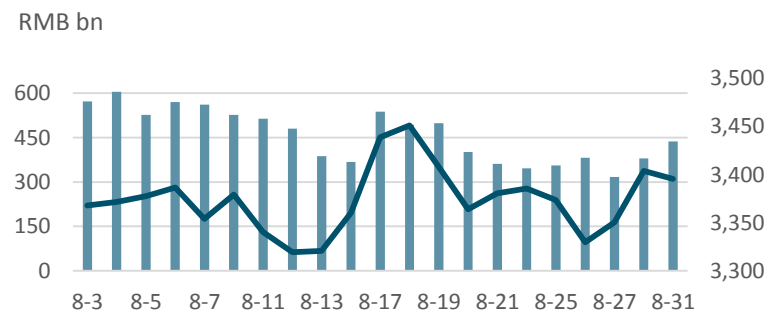
Note: Unless otherwise stated, all the following graphs use the color grey to represent 2019 and indigo to represent 2020.
Data Range: SSE Main Board A-share Companies

August at a Glance

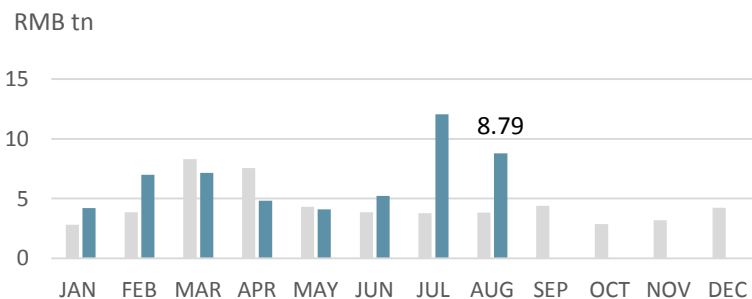
Index	Closing Price	Monthly Gain/Loss	P/E Ratio
SSE Composite	3395.68	2.59	16.03
SSE 180	9944.37	3.45	12.74
SSE 380	6057.80	2.36	21.36
CSI 300	4816.22	2.58	15.28

Note: as of Aug (2020/8/31)

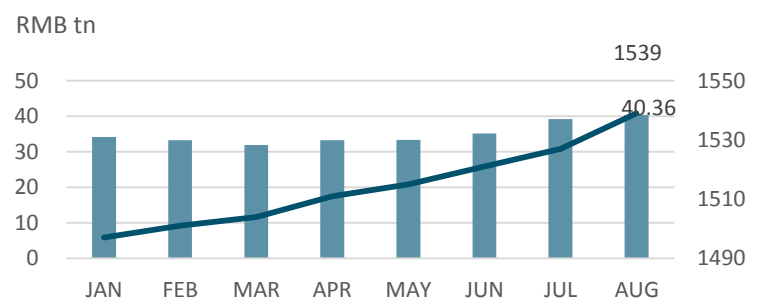
SSE Composite & Daily Turnover



Monthly Turnover



Market Cap. & No. of Listed Comps



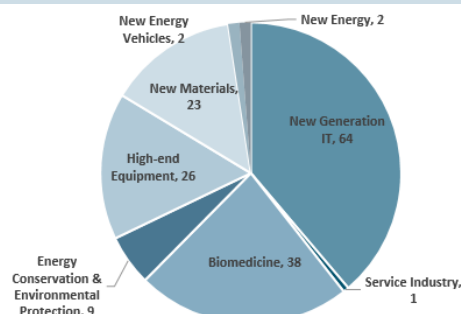
SSE STAR Market

Overview

Listed Companies	165
Market Cap	RMB 2.89 tn
Turnover	RMB 848.08 bn
After-Hours Fixed-Price Trading	RMB 186 mn

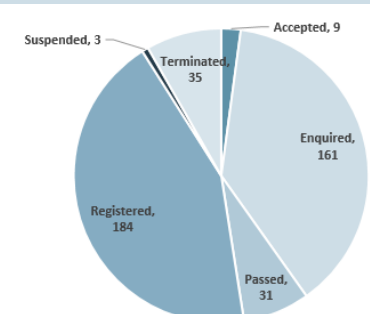
Note: as of Aug (2020/8/31)

Sectorial Distribution



Note: as of Aug (2020/8/31)

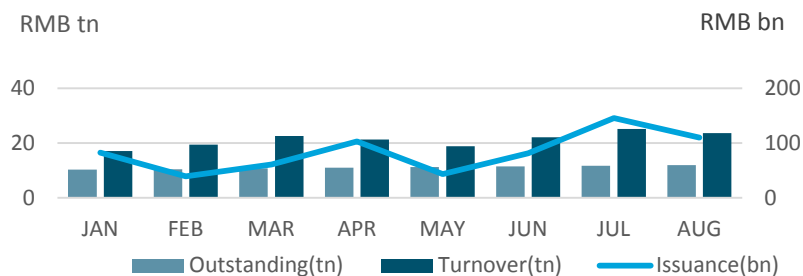
STAR Market Applications Update



Note: as of Aug (2020/8/31)

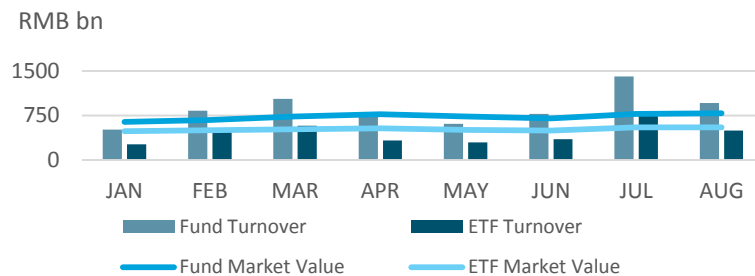
Bond Market

Monthly Turnover, Outstanding & Issuance



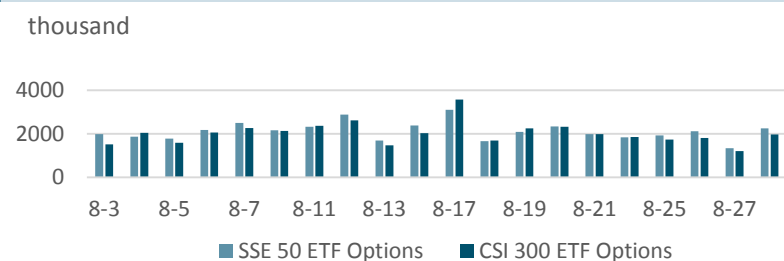
Fund Market

Monthly Turnover & Market Value



Derivatives Market

Daily No. of Contracts Traded



QFII/RQFII

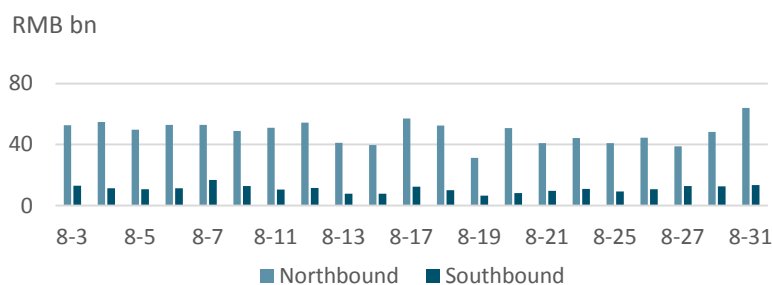
Licenses Granted

	RQFII	QFII
Licenses Granted	256	322

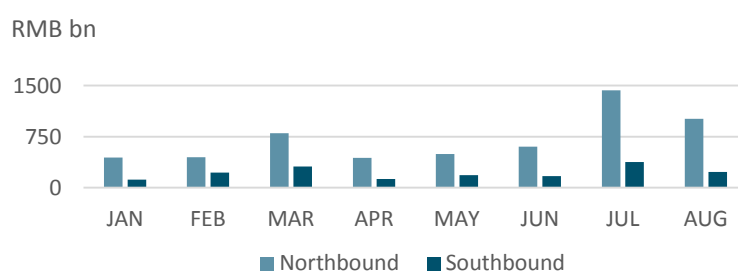
Note: as of July (2020/7/31)

Shanghai-Hong Kong Stock Connect

Daily Turnover



Monthly Turnover



Fund Raising

Listing

		No. of Securities	Fund Raising (RMB bn)
SSE Main Board	IPO	14	9.45
	Refinancing	92	47.80
SSE STAR Market	IPO	22	30.28
	Refinancing	0	0
Bond		510	414.10

Note: 2020/8/1~2020/8/31

Disclaimer

Shanghai Stock Exchange endeavors to ensure that the data and other material in this document are correct and complete, but does not accept liability for any error made or omission from this document. Shanghai Stock Exchange shall not be liable for any claims or losses of any nature, arising indirectly or directly from use of the data or material on this document. The reader of this document shall acknowledge and agree that all proprietary rights in the information received shall remain the property of Shanghai Stock Exchange. Reproduction, redistribution and transmission of any information contained in this document is strictly prohibited. Use of this document is confirmation that you have understood and accepted these terms.

Source: SSE, CSRC, SAFE, Wind

Should you have any queries, please feel free to contact sjwan@sse.com.cn or yhchen@sse.com.cn.

For more information, please visit <http://english.sse.com.cn/home/>.

