

SSE Newsletter

In this issue

- Monthly Highlights
- Market Updates
- Fund Raising
- Downloads

Downloads

[Q&A on Inclusion of Eligible STAR Market Stocks into SSE 180 and CSI 300 \(in Chinese\)](#)

[Q&A on Recent Risk Events in Bond Market](#)

Monthly Highlights

- On Nov 27, the SSE, SZSE and HKEX reached a consensus on expanding the stock scope of the Shanghai-Hong Kong and Shenzhen-Hong Kong Stock Connect.
http://www.sse.com.cn/aboutus/mediacenter/hotandd/c/c_20201127_5268231.shtml
- On Nov 3, the SSE released Three-year Action Plan to improve the quality of SSE listed companies.
http://www.sse.com.cn/aboutus/mediacenter/hotandd/c/c_20201103_5253179.shtml

Market Updates

SSE Main Board

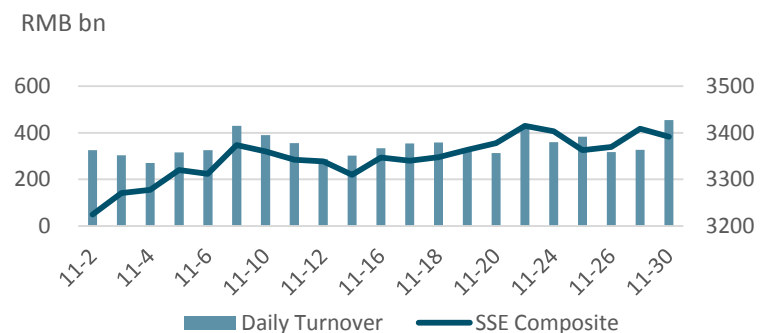
Note: Unless otherwise stated, all the following graphs use the color grey to represent 2019 and indigo to represent 2020.
Data Range: SSE Main Board A-share Companies

November at a Glance

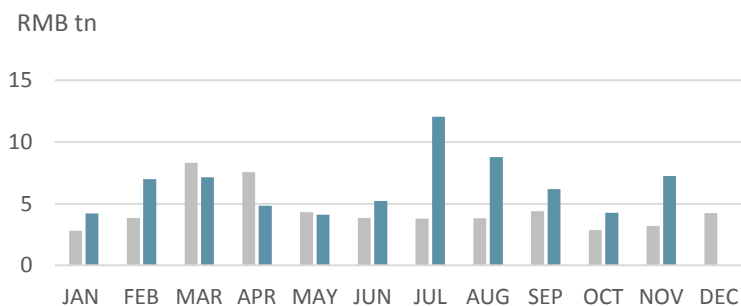
Index	Closing Price	Monthly Gain/Loss	P/E Ratio
SSE Composite	3391.76	5.19	16.27
SSE 180	10210.25	6.31	13.06
SSE 380	5728.14	3.03	20.67
CSI 300	4960.25	5.64	15.69

Note: as of Nov (2020/11/30)

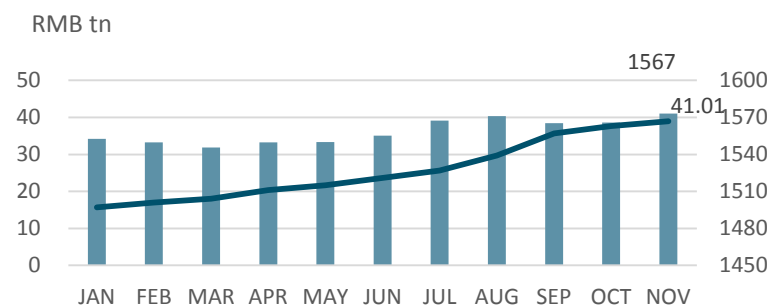
SSE Composite & Daily Turnover



Monthly Turnover



Market Cap. & No. of Listed Comps



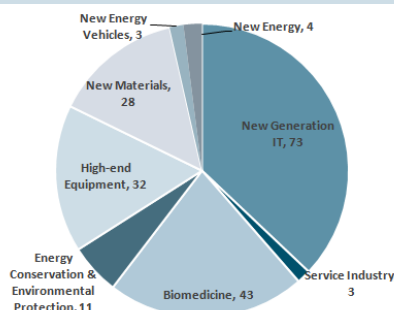
SSE STAR Market

Overview

Listed Companies	197
Market Cap	RMB 3.11 tn
Turnover	RMB 572.4 bn
After-Hours Fixed-Price Trading	RMB 62.9 mn

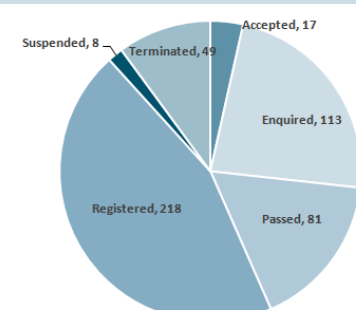
Note: as of Nov (2020/11/30)

Sectorial Distribution



Note: as of Nov (2020/11/30)

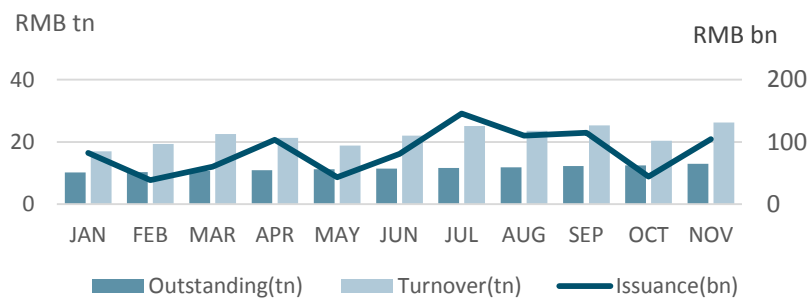
STAR Market Applications Update



Note: as of Nov (2020/11/30)

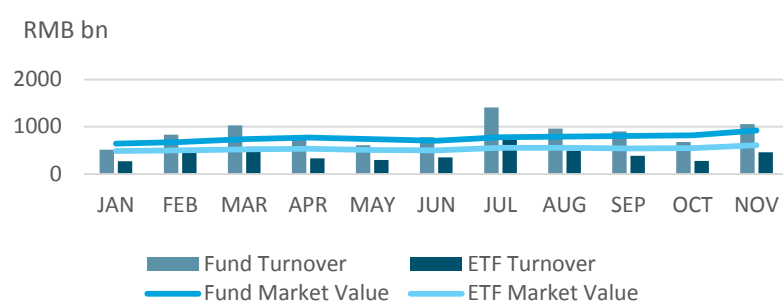
Bond Market

Monthly Outstanding & Turnover



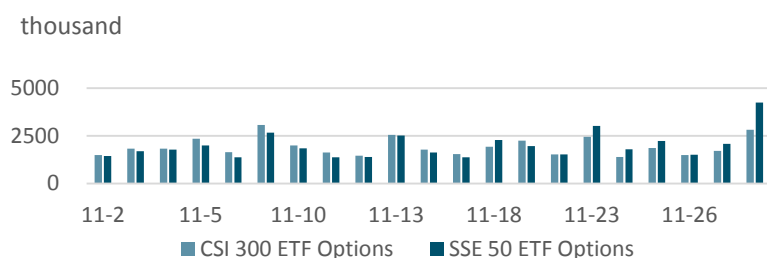
Fund Market

Monthly Turnover & Market Value



Derivatives Market

Daily No. of Contracts Traded



QFII/RQFII

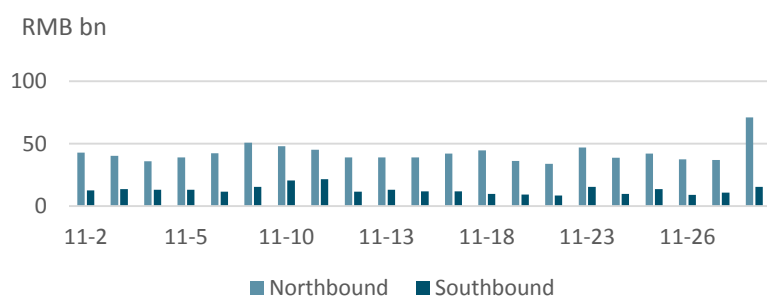
Licenses Granted

	RQFII	QFII
Licenses Granted	259	326

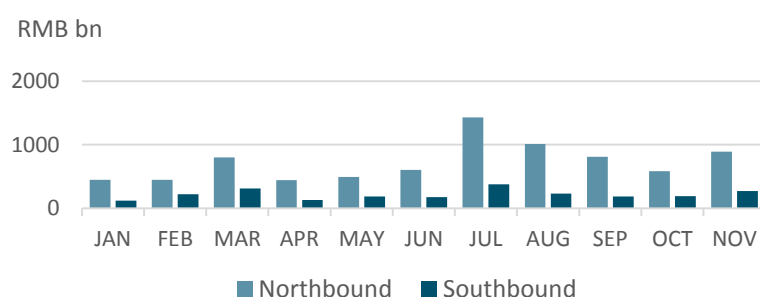
Note: as of Oct (2020/10/31)

Shanghai-Hong Kong Stock Connect

Daily Turnover



Monthly Turnover



Fund Raising

Listing

		No. of Securities	Fund Raising (RMB bn)
SSE Main Board	IPO	4	15.45
	Refinancing	110	53.36
SSE STAR Market	IPO	6	5.53
	Refinancing	3	0.034
Bond		728	598.24

Note: 2020/11/1~2020/11/30

Disclaimer

Shanghai Stock Exchange endeavors to ensure that the data and other material in this document are correct and complete, but does not accept liability for any error made or omission from this document. Shanghai Stock Exchange shall not be liable for any claims or losses of any nature, arising indirectly or directly from use of the data or material on this document. The reader of this document shall acknowledge and agree that all proprietary rights in the information received shall remain the property of Shanghai Stock Exchange. Reproduction, redistribution and transmission of any information contained in this document is strictly prohibited. Use of this document is confirmation that you have understood and accepted these terms.

Source: SSE, CSRC, SAFE, Wind

Should you have any queries, please feel free to contact sjwan@sse.com.cn or yhchen@sse.com.cn.

For more information, please visit <http://english.sse.com.cn/home/>.

