



SSE Newsletter – June

Source: SSE, Wind, as of June 30, 2021.

Monthly News Highlights

SSE Lists 1st Pair of Shanghai-Hong Kong ETF Connectivity Products

1 June

Approved by the China Securities Regulatory Commission (CSRC) and the Securities and Futures Commission (SFC) of Hong Kong, the first pair of products for the Shanghai-Hong Kong ETF Product Link were listed concurrently on the Shanghai Stock Exchange (SSE) and the Hong Kong Exchanges and Clearing Limited (HKEX). Based on the mature ETF connectivity mechanism, the Huatai-PineBridge CSOP Hang Seng TECH ETF was listed on the SSE, and the CSOP Huatai-PineBridge CSI Photovoltaic Industry ETF was listed on the HKEX. This marked an important achievement in deepening the contact and cooperation between the two capital markets and expanding the investment choices for investors in both markets.

<http://english.sse.com.cn/news/newsrelease/c/5485152.shtml>

SSE Answers Questions on Disclosure of Annual Reports of Corporate Bonds in 2020

4 June

Lately, an official from the Shanghai Stock Exchange (SSE) answered questions from the press on the disclosure and regulation of the annual reports of corporate bonds in 2020.

SSE Lists 1st Batch of Five Publicly-offered Infrastructure REITs

21 June

On the morning of June 21, the listing ceremony of the first batch of five Publicly-offered Infrastructure REITs was successfully held in the trading hall of the Shanghai Stock Exchange (SSE). Director-General Chen Fei of the Department of Corporate Bond Supervision of the China Securities Regulatory Commission (CSRC), Deputy Director-General Han Zhifeng of the Department of Fixed Asset Investment of the National Development and Reform Commission (NDRC), and SSE President Cai Jianchun delivered speeches at the ceremony. The representatives for the original equity holders of the five Publicly-offered Infrastructure REITs opened the market for the first batch of products.

Equity Market

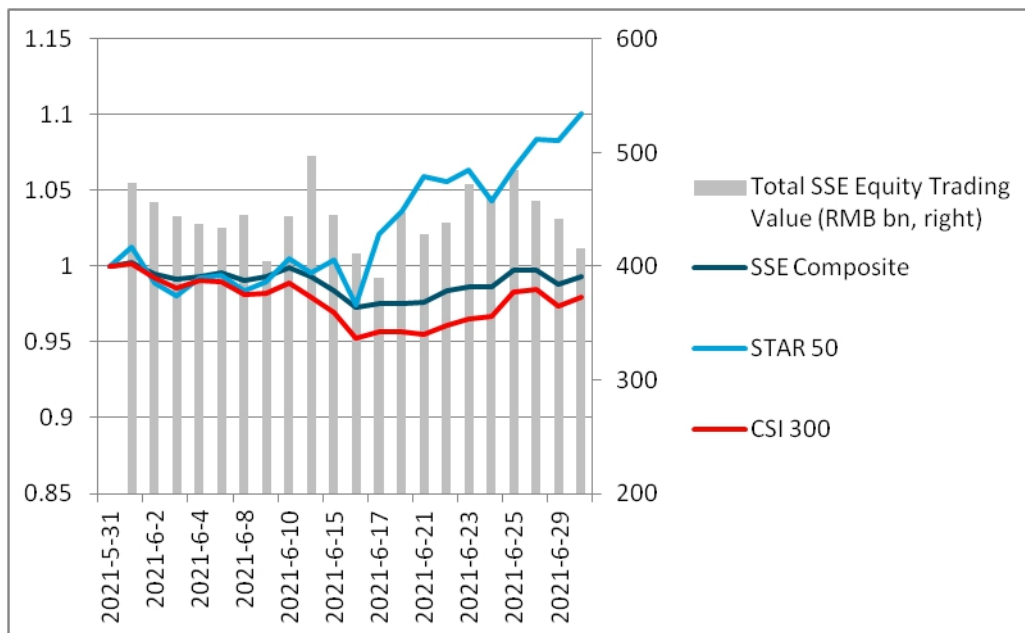
● Market Overview

Boards	No. of Listed Companies	Total Market Value (RMB tn)	PE (LYR)	Average Daily Trading Value (RMB bn)	Average Daily Trading Value MoM Change
Main Board A	1625	44.39	16.21	394.90	6.83%
STAR Market	301	4.73	72.59	49.17	57.17%

● Index Performance

Indexes	Closing Price	Monthly Performance	YTD Performance
SSE Composite	3591.20	-0.67%	3.40%
SSE 50	3498.65	-4.15%	-3.90%
SSE 180	10547.03	-2.97%	-1.30%
STAR 50	1588.22	10.09%	14.01%
CSI 300	5224.04	-2.02%	0.24%

Index Performance & Equity Trading Value



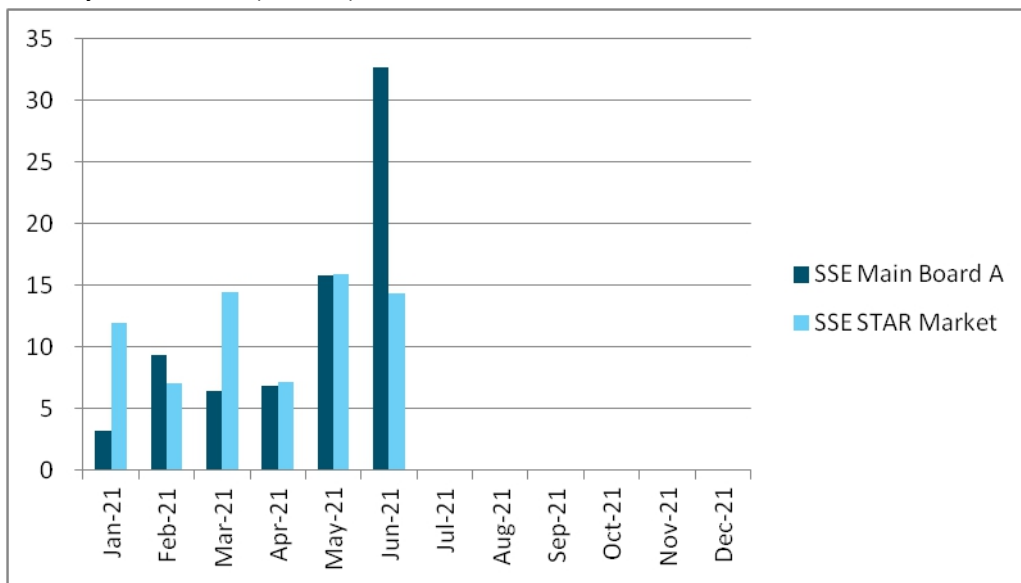
Note: the indexes are rebased to May 31, 2020.

● IPO

2021	Main Board A		STAR Market	
	No. of Newly Listed Companies	IPO Proceeds (RMB bn)	No. of Newly Listed Companies	IPO Proceeds (RMB bn)
January	6	3.22	8	11.96
February	7	9.29	9	7.02
March	8	6.45	19	14.43
April	11	6.81	17	7.19
May	13	15.81	14	15.89
June	9	32.65	19	14.34

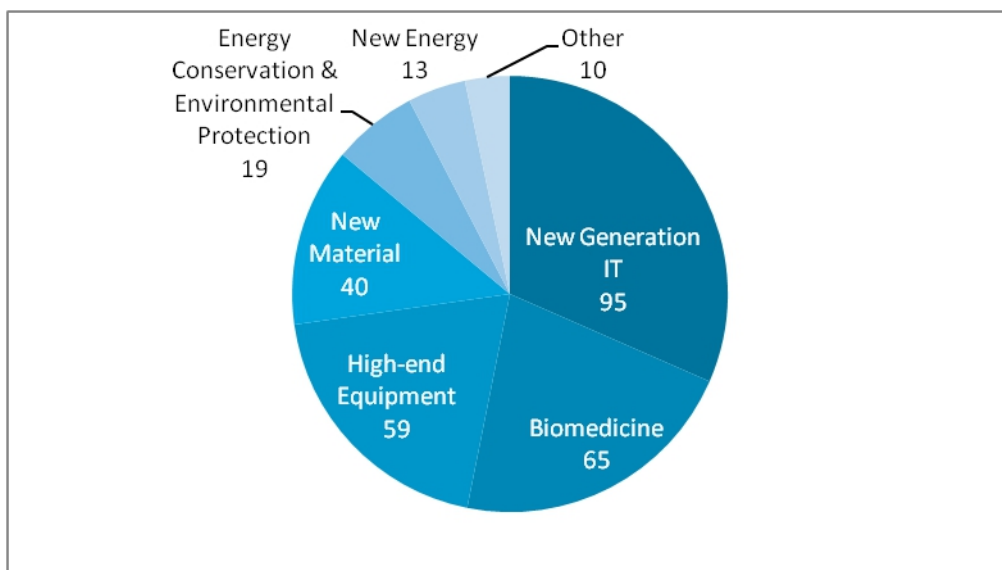
Note: a list of all the newly listed companies is available at the last page.

Monthly IPO Proceeds (RMB bn)

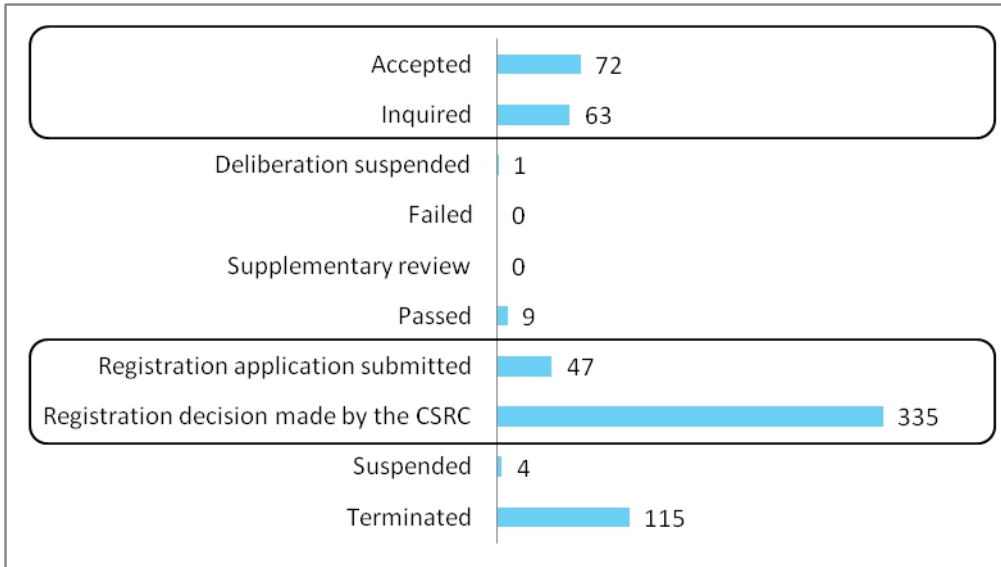


● STAR Market

STAR Market Sector Distribution (No. of listed companies in the sector)

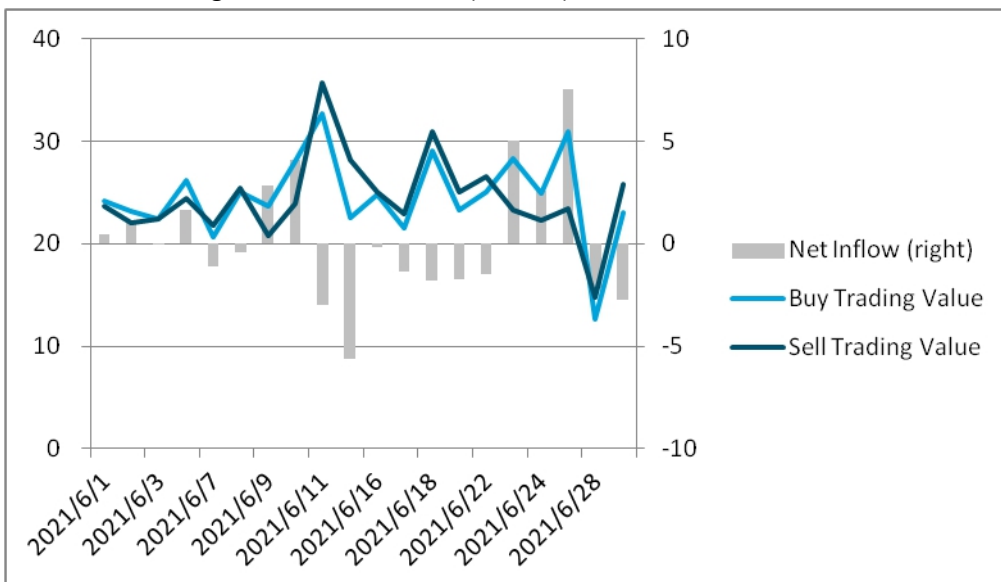


STAR Market IPO Pipeline (No. of issuers in the registration process)



● Shanghai-Hong Kong Stock Connect

Northbound Trading Value and Net Inflow (RMB bn)



Bond Market

Bond Types	Market Value (RMB bn)	MoM Change	Average Daily Trading Value (RMB bn)	MoM Change
Treasury bonds	787.72	3.55%	3.02	57.74%
Local government bonds	740.03	1.16%	0.30	52.59%
Financial bonds	125.42	0.13%	0.09	5.42%
Corporate bonds	9797.41	2.08%	2.27	-0.74%
Enterprise bonds	814.68	0.75%	20.68	4.09%
Convertible bonds	430.70	-2.07%	21.36	-18.37%
Asset-backed securities	1487.21	1.23%	0.33	0.29%
Total	14183.17	1.80%	48.04	-5.50%

ETF Market

ETF Types	No. of ETFs	Market Value (RMB bn)	MoM Change	Average Daily Trading Value (RMB bn)	MoM Change
Equity ETF	257	608.95	-3.30%	20.02	5.31%
Bond ETF	13	12.66	2.37%	0.32	10.81%
Commodity ETF (gold)	8	12.08	-4.73%	1.50	1.54%
Cross-Border ETF	26	56.29	8.24%	3.14	12.16%
Total	304	689.97	-2.38%	24.99	5.96%

Note: Exchange-traded money market funds are not included

Derivatives Market

Options	Average Daily No. of Contracts Traded (mn)	MoM Change	No. of Call Options Contracts (mn)	MoM Change	No. of Put Options Contracts (mn)	MoM Change	Put/Call Ratio
SSE 50ETF Options	2.50	-4.95%	1.47	-2.59%	1.03	-8.13%	70.05%
CSI 300 ETF Options	1.72	-13.93%	0.96	-14.05%	0.76	-13.77%	79.47%

Newly Listed Companies

Code	Name	Industry	Market Value (RMB bn)
Main Board			
600905.SH	China Three Gorges Renewables (Group) Co.,Ltd.	Electric Utilities	181.71
601156.SH	Eastern Air Logistics Co., Ltd.	Air Freight & Logistics	37.58
601528.SH	Zhejiang Shaoxing Ruifeng Rural Commercial Bank Co.,Ltd.	Regional Banks	23.50
601665.SH	Qilu Bank Co.,Ltd	Regional Banks	42.60
603171.SH	Servyou Software Group Co., Ltd.	Integrated Telecommunication Services	7.79
603529.SH	Aima Technology Group Co.,Ltd.	Leisure Products	23.46
605011.SH	Hangzhou Cogeneration Group Co., Ltd.	Multi-Utilities	3.55
605259.SH	Lutian Machinery Co., Ltd.	Auto Parts & Equipment	3.14
605319.SH	Wuxi Zhenhua Auto Parts Co., Ltd.	Auto Parts & Equipment	3.59
STAR Market			
688067.SH	Ave Science&Technology Co.,Ltd	Biotechnology	2.13
688117.SH	Cheng Du Sheng Nuo Biotec Co.,Ltd.	Biotechnology	3.87
688131.SH	Shanghai Haoyuan Chemexpress Co.,Ltd.	Pharmaceuticals	25.74
688161.SH	Shandong Weigao Orthopaedic Device Co.,Ltd.	Health Care Supplies	42.42
688216.SH	China Chippacking Technology Co.,Ltd.	Semiconductors	7.09
688269.SH	Kaili Catalyst & New Materials Co.,Ltd	Specialty Chemicals	13.03
688276.SH	Changchun Bcht Biotechnology Co.	Biotechnology	43.17
688319.SH	Chengdu Olymvax Biopharmaceuticals Inc.	Biotechnology	15.16
688345.SH	Guangdong Greenway Technology Co., Ltd.	Electrical Components & Equipment	7.36
688367.SH	Hefei Gocom Information Technology Co.,Ltd.	Electronic Equipment & Instruments	1.87
688425.SH	China Railway Construction Heavy Industry Corporation Limited	Construction & Farm Machinery & Heavy Trucks	31.46
688517.SH	Jinguan Electric Co., Ltd.	Electrical Components & Equipment	1.93
688597.SH	Beijing Yupont Electric Power Technology Co., Ltd.	Electrical Components & Equipment	2.23
688601.SH	Wuxi ETEK Microelectronics Co.,Ltd.	Semiconductors	11.78
688621.SH	Beijing Sun-Novo Pharmaceutical Research Co.,Ltd.	Life Sciences Tools & Services	7.10
688625.SH	Gch Technology Co.,Ltd.	Specialty Chemicals	7.12
688681.SH	Shandong Kehui Power Automation Co., Ltd.	Electrical Components & Equipment	1.92
688690.SH	Suzhou Nanomicro Technology Co., Ltd.	Biotechnology	47.02
688700.SH	Kunshan Dongwei Technology Co.,Ltd.	Industrial Machinery	7.86