

Source: SSE, Wind, as of March 31, 2022.

Monthly News Highlights

SSE Takes Measures to Guarantee the Operation of the Market during the Epidemic Prevention and Control Period

March 27

To support the control and prevention of Covid-19 and guarantee the smooth operation of the financial market, the SSE have made 30 adjustments to the business in terms of stock issuance, listed companies' information disclosure, bond businesses and etc. The exchange specifically mentioned that it will enhance communication and services with all kinds of overseas investors through virtual roadshows and corporate access events. http://www.sse.com.cn/aboutus/mediacenter/hotandd/c/c_20220327_5700339.shtml (in Chinese)

SSE Issues Interim Measures for the Listing and Trading of DRs under the Stock Connect Scheme between SSE and Overseas Stock Exchanges

March 25

Based on the Provisions on the Depository Receipts issued by the CSRC, the SSE revised the listing and trading rules of DRs, which has incorporated suggestions from previous public consultation and has made adjustments in terms of the scope of application, arrangements of listing review, termination of listing and its procedures, regulatory requirements on continuous information disclosure, investor suitability and particular items for global depository receipts.

Full articles of the English guidelines are available at:

<http://english.sse.com.cn/news/newsrelease/c/5700281.shtml>

SSE Carbon Neutral Action Plan for the 14th Five-Year Plan Released

March 1

In order to fully implement the new development concept and sustainable development strategy, the SSE has officially released the "Shanghai Stock Exchange Carbon Neutral Action Plan for the 14th Five-Year Plan", which aims to provide an action plan for the SSE to support the innovative, coordinated and green development of the capital market and to establish a sound long-term mechanism to serve the development of a green, low-carbon and circular economy.

For more details, please visit:

<https://mp.weixin.qq.com/s/spFo0A4NWtiZFhs9L6xLpw> (in Chinese)

Briefing on SSE 2021 Annual First-line Supervision

March 1

In 2021, the SSE imposed 185 disciplinary actions against various non-compliant subjects, representing an increase of approximately 36% year-on-year; disciplined 126 securities issuers and 656 related regulatory targets, representing an increase of approximately 15% year-on-year.

For more details, please visit:

http://www.sse.com.cn/aboutus/mediacenter/hotandd/c/c_20220301_5695925.shtml (in Chinese)

Edited by CHEN Yinghui , Dept. of International Affairs, Shanghai Stock Exchange.

Equity Market

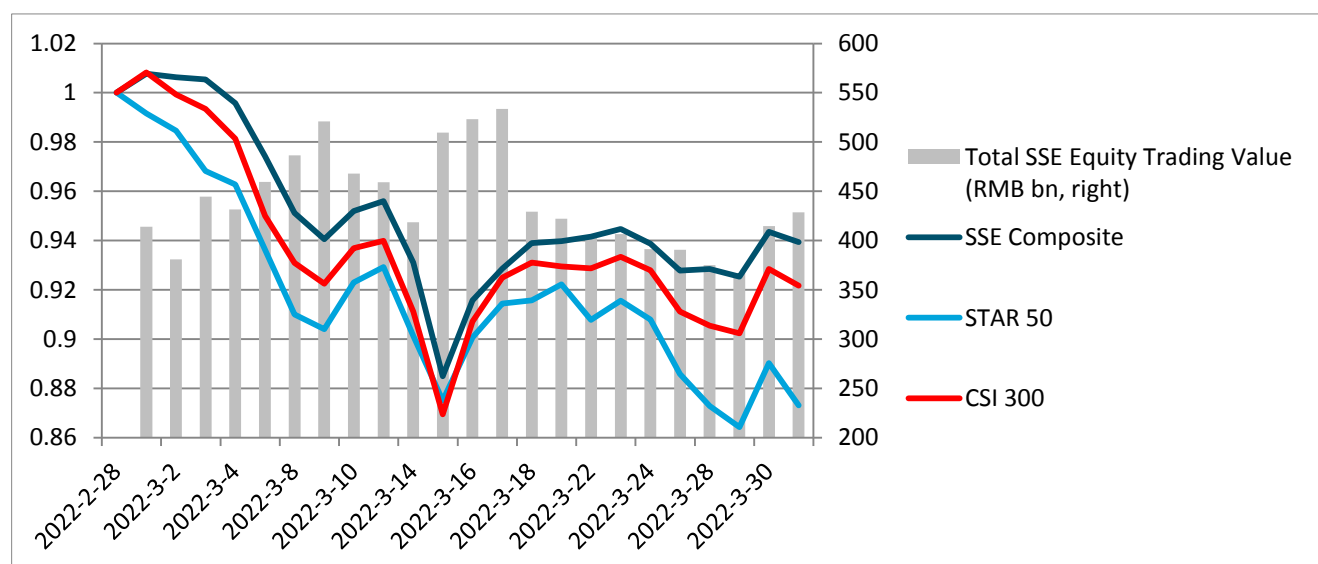
● Market Overview

Boards	No. of Listed Companies	Total Market Cap. (RMB tn)	PE (LYR)	Average Daily Trading Value (RMB bn)	Average Daily Trading Value MoM Change
Main Board A	1665	41.95	15.03	395.31	11.72%
STAR Market	404	4.70	56.63	42.75	12.53%

● Index Performance

Indexes	Closing Price	Monthly Performance	YTD Performance
SSE Composite	3252.20	-6.07%	-10.65%
SSE 50	2898.83	-5.91%	-11.47%
SSE 180	8970.03	-6.65%	-11.45%
STAR 50	1091.06	-12.69%	-21.97%
CSI 300	4222.60	-7.84%	-14.53%

Index Performance & Equity Trading Value



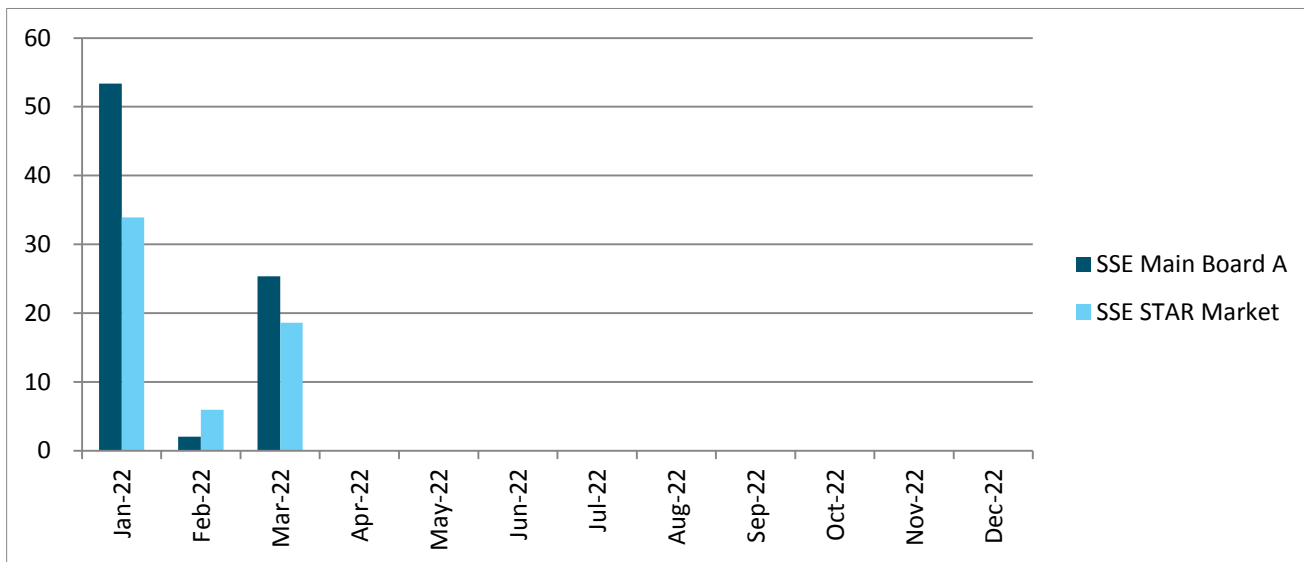
Note: the indexes are rebased to February 28, 2022.

● IPO

2022	Main Board A		STAR Market	
	No. of Newly Listed Companies	IPO Proceeds (RMB bn)	No. of Newly Listed Companies	IPO Proceeds (RMB bn)
January	3	53.37	10	33.93
February	3	2.06	4	5.97
	19	25.38	13	18.62
Total	25	80.81	27	58.52

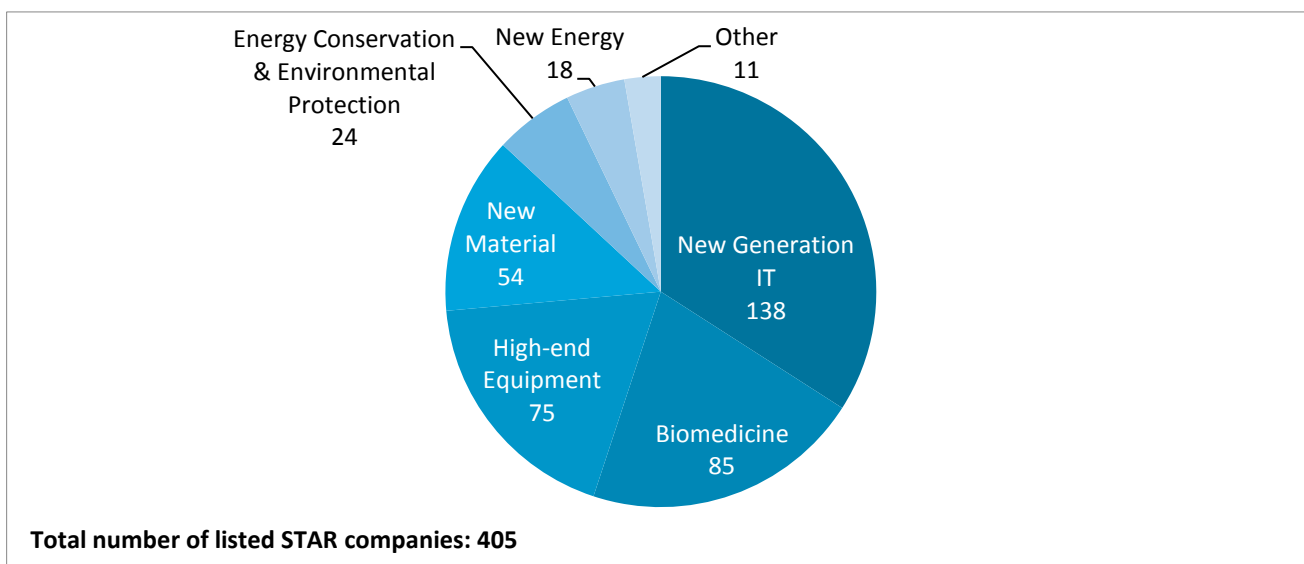
Note: a list of all the newly listed companies this month is available at the last page.

Monthly IPO Proceeds (RMB bn)

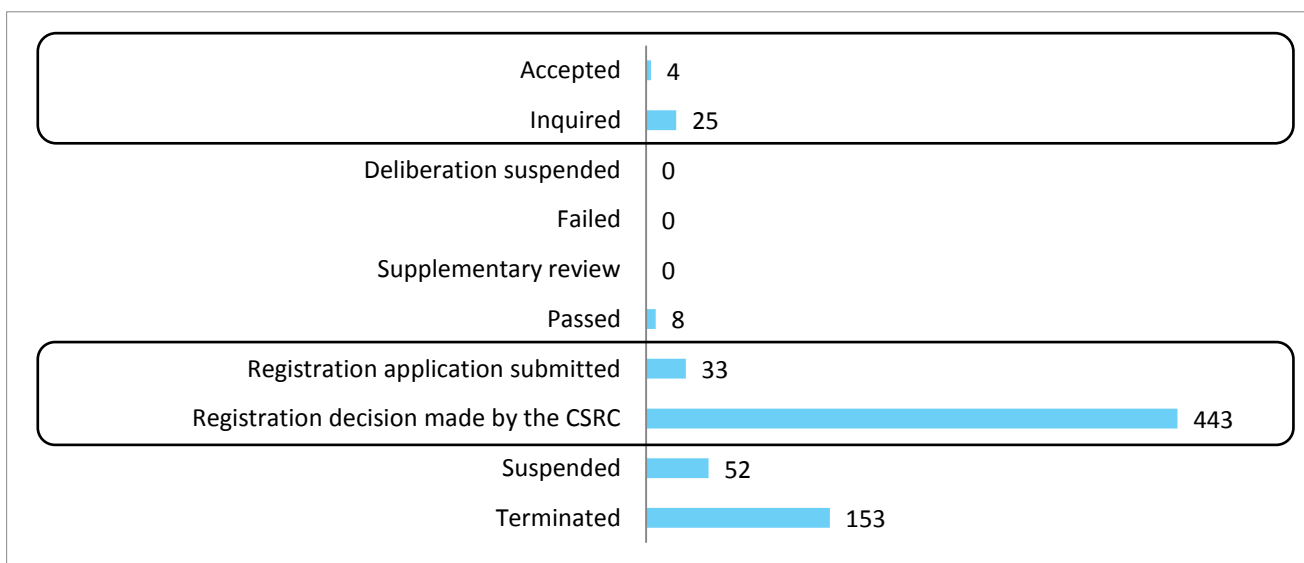


● **STAR Market**

STAR Market Sector Distribution (No. of listed companies in the sector)

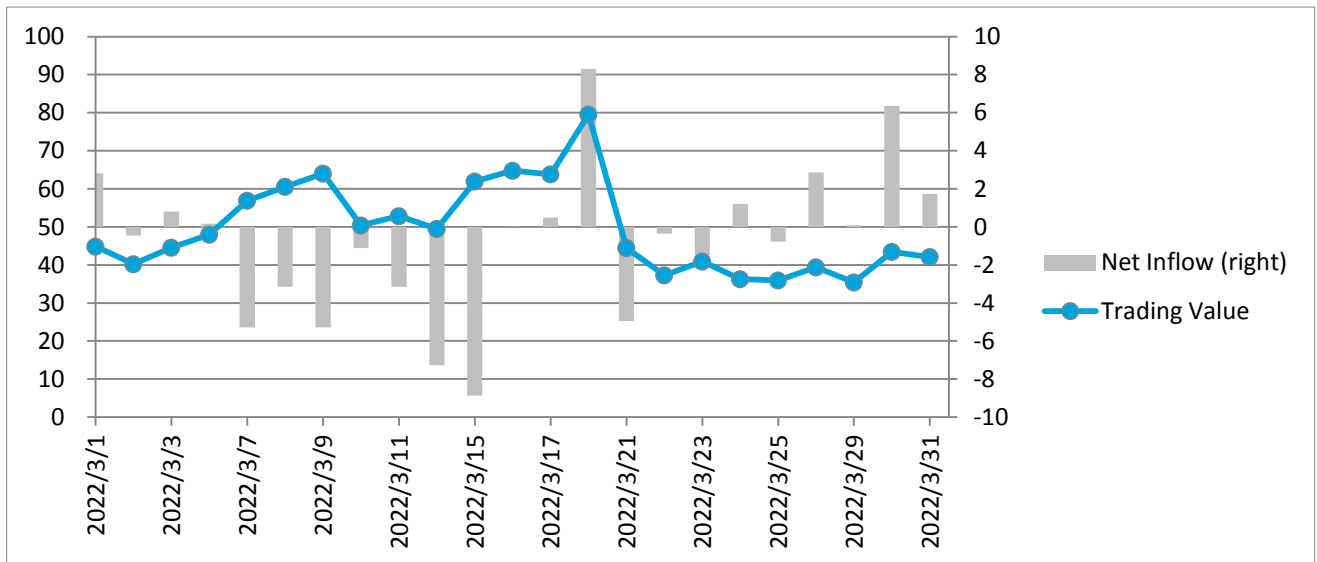


STAR Market IPO Pipeline (No. of issuers in the registration process)



● Shanghai-Hong Kong Stock Connect

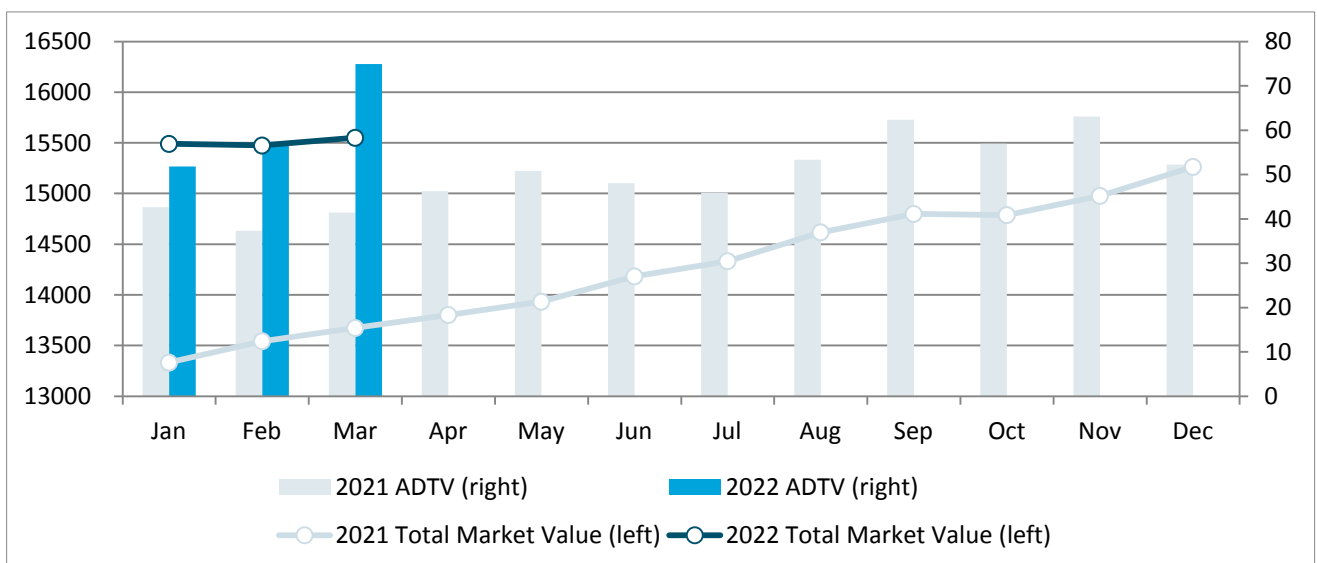
Northbound Trading Value and Net Inflow (RMB bn)



Bond Market

Bond Types	Market Value (RMB bn)	MoM Change	Average Daily Trading Value (RMB bn)	MoM Change
Treasury bonds	831.62	-0.08%	3.19	17.58%
Local government bonds	994.12	3.10%	0.47	-22.17%
Financial bonds	129.21	-0.23%	0.20	11.39%
Corporate bonds	10678.81	0.72%	3.33	7.13%
Enterprise bonds	922.61	0.41%	25.33	28.06%
Convertible bonds	539.04	-1.29%	41.87	37.73%
Asset-backed securities	1454.54	-1.74%	0.50	65.92%
Total	15549.95	0.49%	74.89	31.18%

Monthly Total Market Value and Average Daily Trading Value (RMB bn)

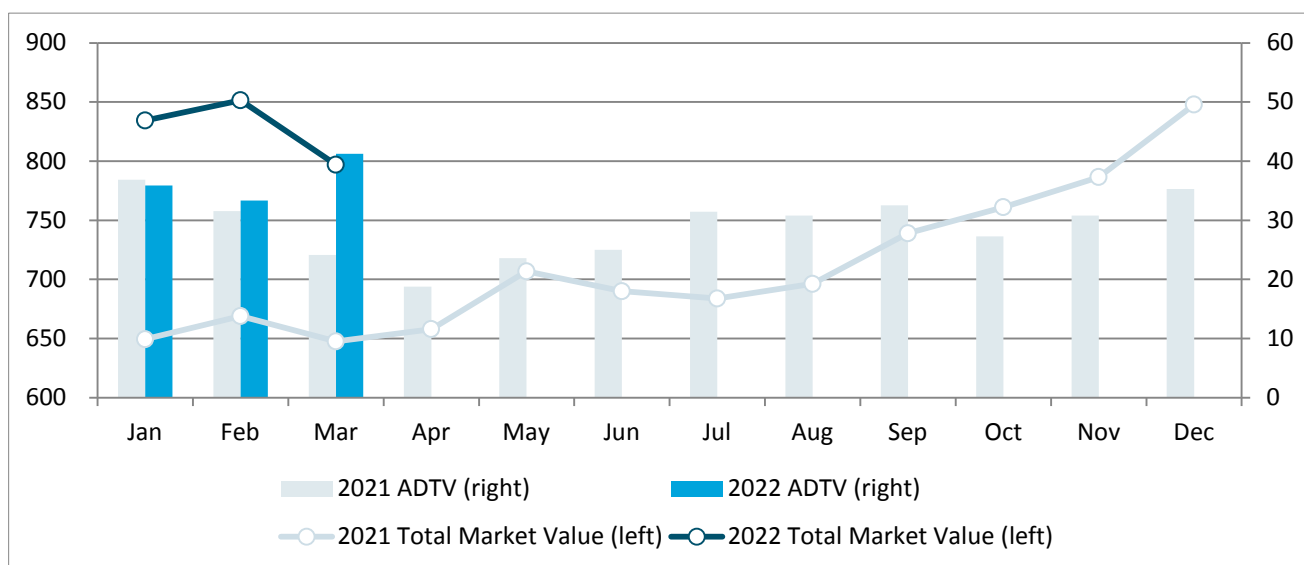


ETF Market

ETF Types	No. of ETFs	Free-float Market Value (RMB bn)	MoM Change	Average Daily Trading Value (RMB bn)	MoM Change
Equity ETF	346	645.97	-8.55%	24.98	7.90%
Bond ETF	11	17.40	1.54%	2.49	70.06%
Commodity ETF (gold)	8	12.95	12.93%	1.24	28.71%
Cross-Border ETF	40	113.04	4.12%	12.37	65.67%
Publicly Offered Infrastructure REITs	6	7.61	-4.64%	0.15	-41.13%
Total	411	796.97	-6.40%	41.24	23.80%

Note: Exchange-traded money market funds are not included

Monthly Total Market Value and Average Daily Trading Value (RMB bn)

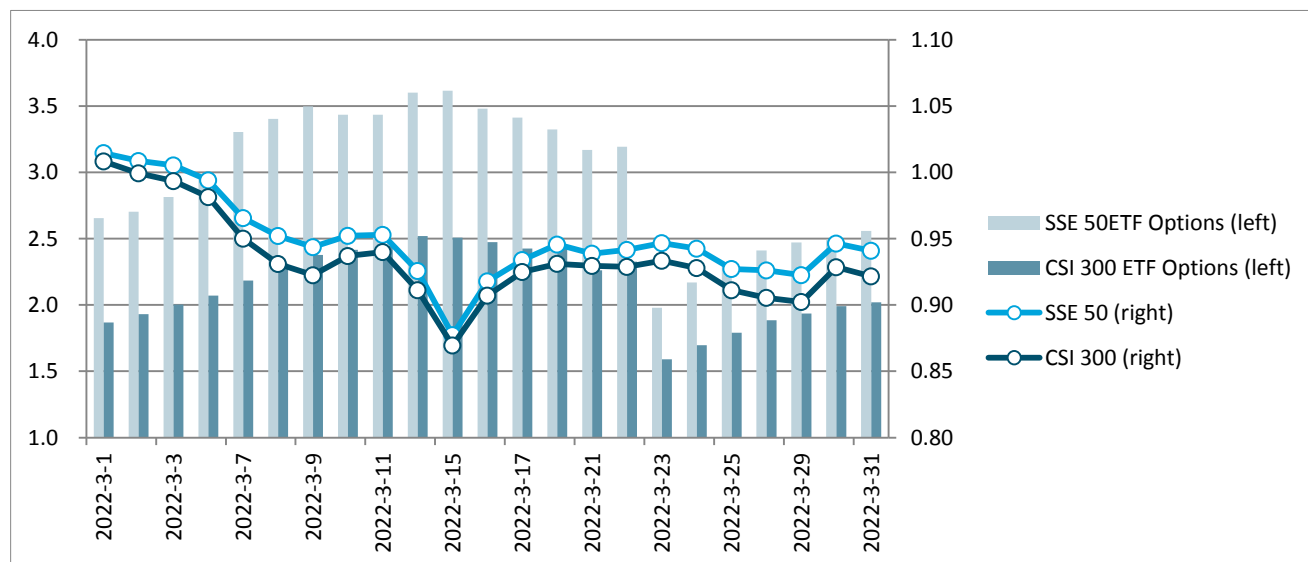


Note: Exchange-traded money market funds are not included

Derivatives Market

Options	Average Daily No. of Contracts Traded (mn)	MoM Change	No. of Call Options Contracts (mn)	MoM Change	No. of Put Options Contracts (mn)	MoM Change	Put/Call Ratio
SSE 50ETF Options	3.01	54.01%	1.55	54.18%	1.46	53.82%	94.16%
CSI 300 ETF Options	2.49	41.44%	1.19	38.84%	1.30	43.92%	108.82%

Daily No. of Options Contracts Traded (mn) and Index Performance



Note: the indexes are rebased to February 28, 2021.

Newly Listed Companies

Code	Name	Industry	Market Cap. (RMB bn)
Main Board			
603051.SH	Guangzhou Lushan New Materials Co., Ltd.	Commodity Chemicals	5.00
603070.SH	Wecome Intelligent Manufacturing Co., Ltd.	Electrical Components & Equipment	13.57
603209.SH	Xingtong Shipping Co., Ltd.	Marine	5.56
603261.SH	Chengdu Lihang Technology Co.,Ltd.	Aerospace & Defense	5.29
STAR Market			
688102.SH	Shaanxi Sirui Advanced Materials Co.,Ltd.	Diversified Metals & Mining	5.38
688115.SH	Smartgiant Technology Co., Ltd.	Electronic Equipment & Instruments	2.83
688150.SH	Shaanxi Lighte Optoelectronics Material Co.,Ltd	Specialty Chemicals	7.11
688163.SH	Shanghai Serum Bio-Technology Co., Ltd.	Biotechnology	3.75
688175.SH	Zhuhai Comleader Information Science&Technology Co., Ltd.	IT Consulting & Other Services	3.70
688193.SH	Shanghai Rendu Biotechnology Co., Ltd.	Biotechnology	2.53
688197.SH	Shouyao Holdings (Beijing) Co., LTD.	Pharmaceuticals	3.84
688207.SH	Beijing Deep Glint Technology Co., Ltd.	Internet Software & Services	5.30
688238.SH	Obio Technology (Shanghai) Corp.,Ltd.	Life Sciences Tools & Services	10.01
688281.SH	Shaanxi Huaqin Technology Industry Co., Ltd.	Aerospace & Defense	16.76
688282.SH	Beijing Navigation Control Technology Co.,Ltd.	Aerospace & Defense	4.18
688306.SH	Ningbo PIA Automation Holding Corp.	Industrial Machinery	6.62
688331.SH	Remegen Co., Ltd.	Biotechnology	21.63

Edited by LI Tianfang, Dept. of International Affairs, Shanghai Stock Exchange.