

Source: SSE, Wind, as of June 30, 2022.

## Monthly News Highlights (As of July 4)

### **SSE, SZSE, HKEX and CSDC Hold Launching Ceremony for Inclusion of ETFs in Stock Connect**

4 July

The inclusion of ETFs in the Stock Connect Mechanism between the markets in China's mainland and Hong Kong was officially launched on July 4, 2022. As a landmark achievement in the upgrading of the Stock Connect, the move also marks another important breakthrough in continuously strengthening the reform of the capital market and advancing high-standard opening up.

<http://english.sse.com.cn/news/newsrelease/c/5705186.shtml>

### **SSE Answers Reporters' Questions on the Revised Shanghai-Hong Kong Stock Connect Rules**

24 June

The main amendments are set out below. The first is to clarify the arrangements for ETFs to be included in the Connect. The second is to regulate the trading behavior of mainland investors trading through northbound stock connect.

For more details, please visit:

<http://english.sse.com.cn/news/newsrelease/c/5705141.shtml>

### **CSRC Solicits Public Opinions on Rules Governing Private Pension Investing Mutual Fund**

24 June

CSRC began to solicit public opinions on rules governing private pension investing mutual fund last Friday, and the deadline for feedbacks is July 24, 2022.

For more details, please visit:

<http://www.csrc.gov.cn/csrc/c100028/c3877707/content.shtml> (in Chinese)

### **China's Financial Market Sees Improved Capability in Serving Real Economy: Central Bank**

23 June

China's financial market saw improvements in its capability to serve the real economy over the past decade, according to the central bank. During this period, the financial industry reported steady growth with reasonably ample liquidity, said Chen Yulu, vice governor of the People's Bank of China, during a briefing on Thursday.

<https://english.news.cn/20220623/6d4936e1344742e4a19edda703c306f4/c.html>

### **SSE Strengthens Investor Protection with Tightened Regulation on Convertible Bond Trading**

17 June

SSE drafted the "Implementation Rules for Trading Convertible Corporate Bonds on Shanghai Stock Exchange (Draft for Public Comments)", and opened for public comments on the market from June 17 to July 1. Meanwhile, in order to further strengthen the suitability management of convertible bond investors, SSE simultaneously issued the Notice on Matters Relating to the Suitability Management of Convertible Corporate Bonds, which has been implemented since June 18.

<http://english.sse.com.cn/news/newsrelease/c/5704833.shtml>

## SSE Releases Fifth Set of Guidelines on the Application of Listing Criteria for Medical Device Companies on the STAR Market

10 June

The fifth set of listing criteria of the SSE STAR Market has enhanced the inclusiveness of "key and core technology" enterprises and supported the listing of enterprises in the R&D stage which have not yet generated a certain level of revenue for going public. The SSE has formulated the Guidelines to further clarify the circumstances and requirements for medical device enterprises to apply the fifth set of listing criteria.

<http://english.sse.com.cn/news/newsrelease/c/5704170.shtml>

## Highlights of China's Policy Package to Stabilize Economy

6 June

Chinese authorities have unveiled a package of detailed policy measures to further stabilize the economy and better coordinate epidemic control and economic development. The package, which was announced at a State Council executive meeting in May, includes 33 measures covering fiscal and financial policies, as well as policies on investment, consumption, food and energy security, industrial and supply chains and people's livelihoods. The following are some highlights of the policy package.

<https://english.news.cn/20220606/03f9b6b5fe5840a1a6614f8922f37c49/c.html>

Edited by LI Tianfang, CHEN Yinghui, WAN Sijia, Dept. of International Affairs, Shanghai Stock Exchange.

## Equity Market

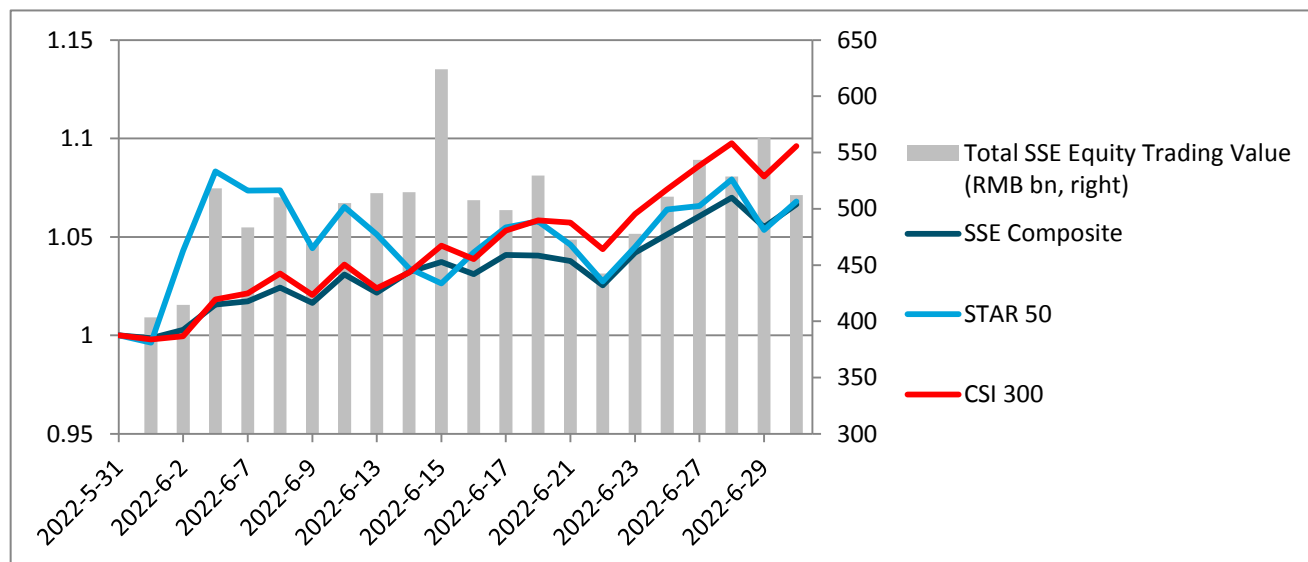
### ● Market Overview

Boards	No. of Listed Companies	Total Market Cap. (RMB tn)	PE (LYR)	Average Daily Trading Value (RMB bn)	Average Daily Trading Value MoM Change
Main Board A	1657	43.90	12.72	444.80	29.65%
STAR Market	431	5.40	45.38	57.01	64.01%

### ● Index Performance

Indexes	Closing Price	Monthly Performance	YTD Performance
SSE Composite	3398.62	6.99%	-6.33%
SSE 50	3058.40	8.04%	-7.17%
SSE 180	9412.63	7.69%	-7.25%
STAR 50	1105.67	7.92%	-20.09%
CSI 300	4485.01	9.75%	-9.11%

## Index Performance & Equity Trading Value



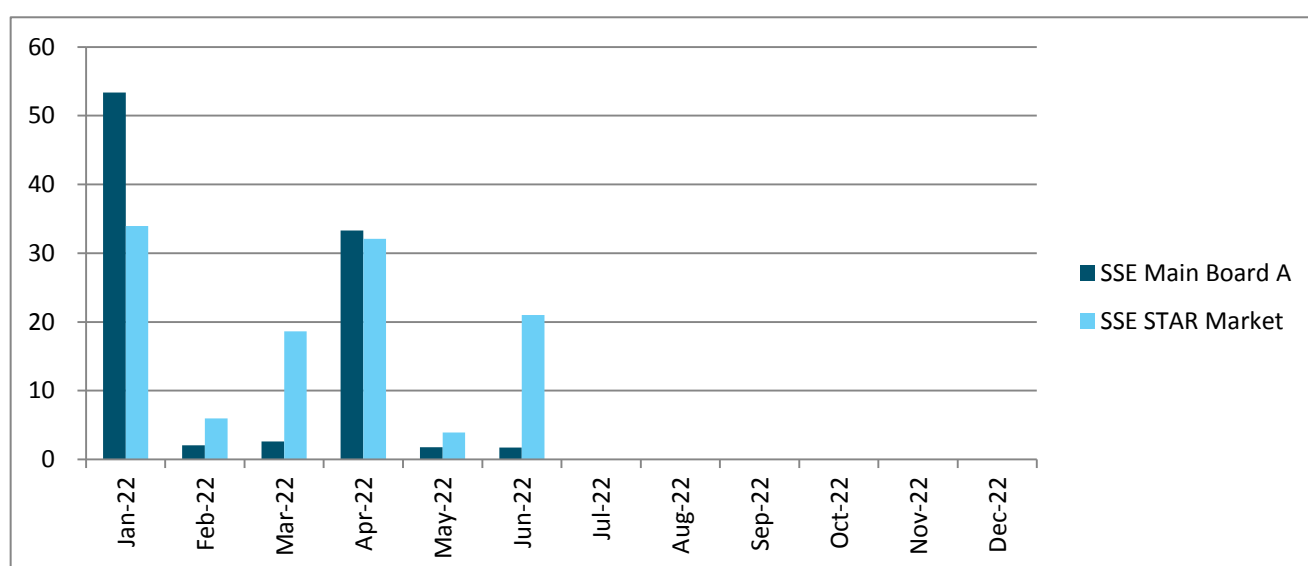
Note: the indexes are rebased to May 31, 2022.

## ● IPO

2022	Main Board A		STAR Market	
	No. of Newly Listed Companies	IPO Proceeds (RMB bn)	No. of Newly Listed Companies	IPO Proceeds (RMB bn)
January	3	53.37	10	33.93
February	3	2.06	4	5.97
March	4	2.61	13	18.62
April	2	33.28	16	32.09
May	3	1.80	4	3.94
June	1	1.75	7	21.01
<b>Total</b>	<b>16</b>	<b>94.87</b>	<b>54</b>	<b>115.56</b>

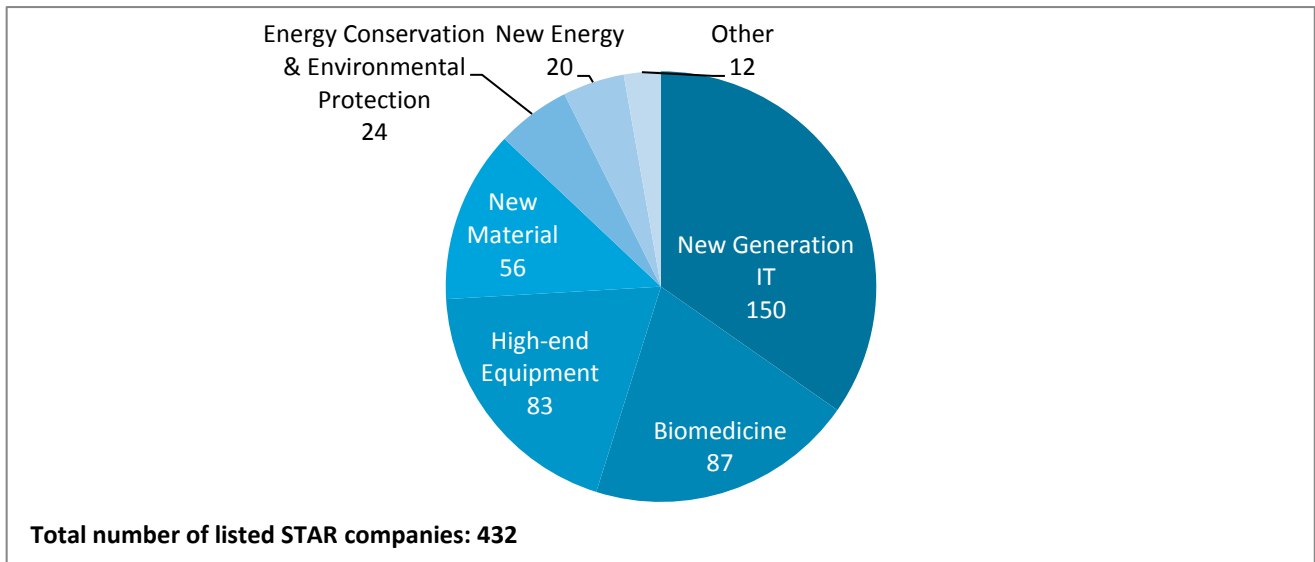
Note: a list of all the newly listed companies this month is available at the last page.

## Monthly IPO Proceeds (RMB bn)

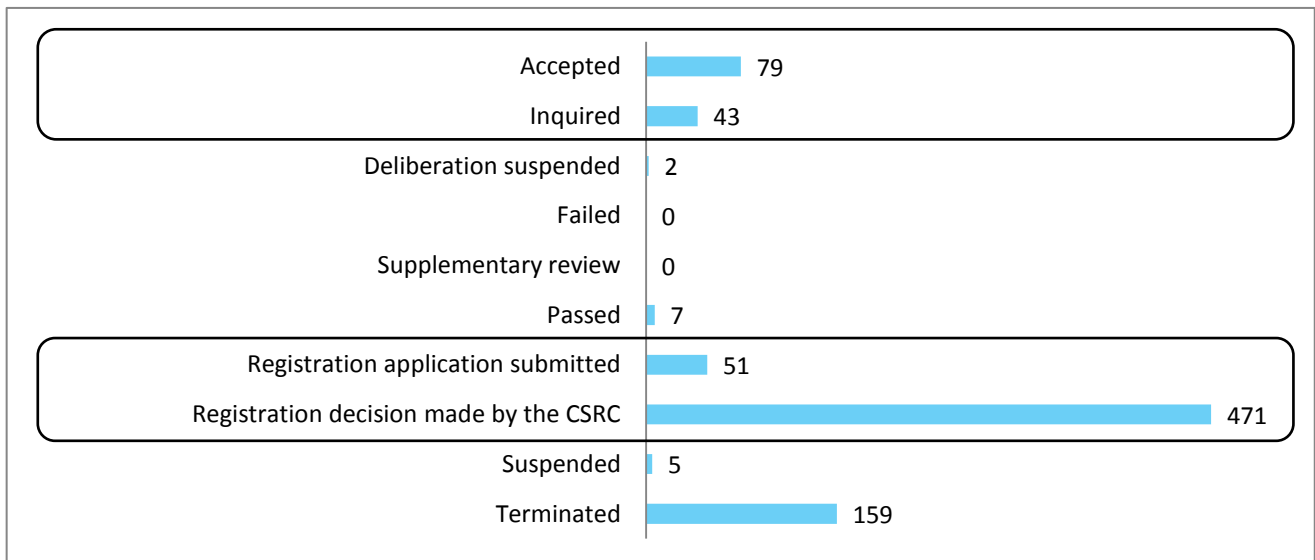


● STAR Market

STAR Market Sector Distribution (No. of listed companies in the sector, as of July 4)

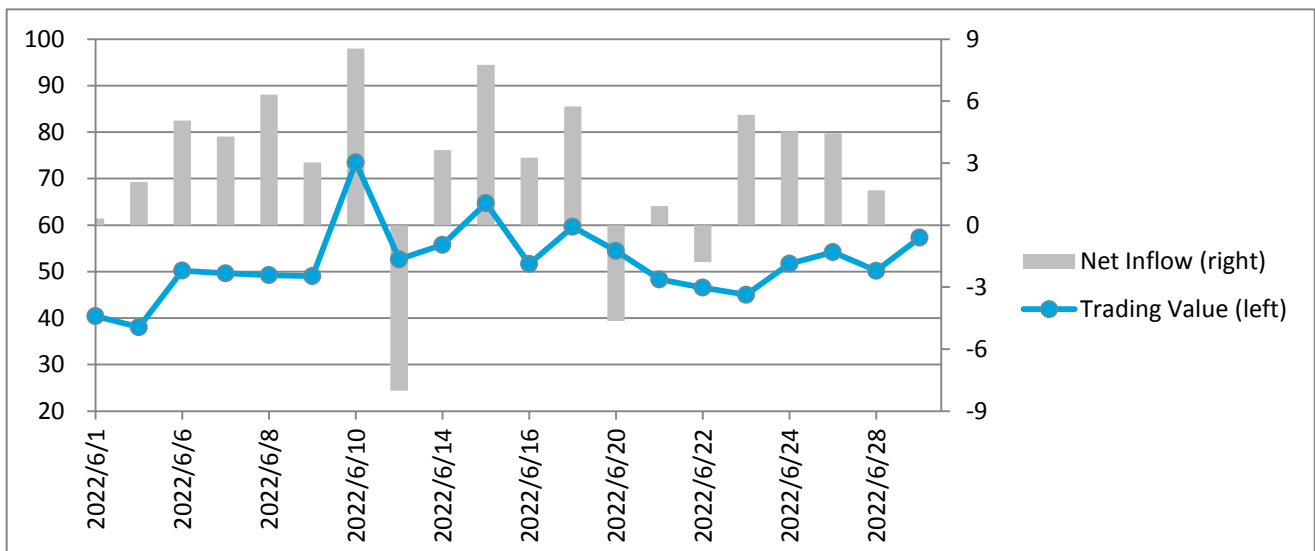


STAR Market IPO Pipeline (No. of issuers in the registration process, as of July 4)



● Shanghai-Hong Kong Stock Connect

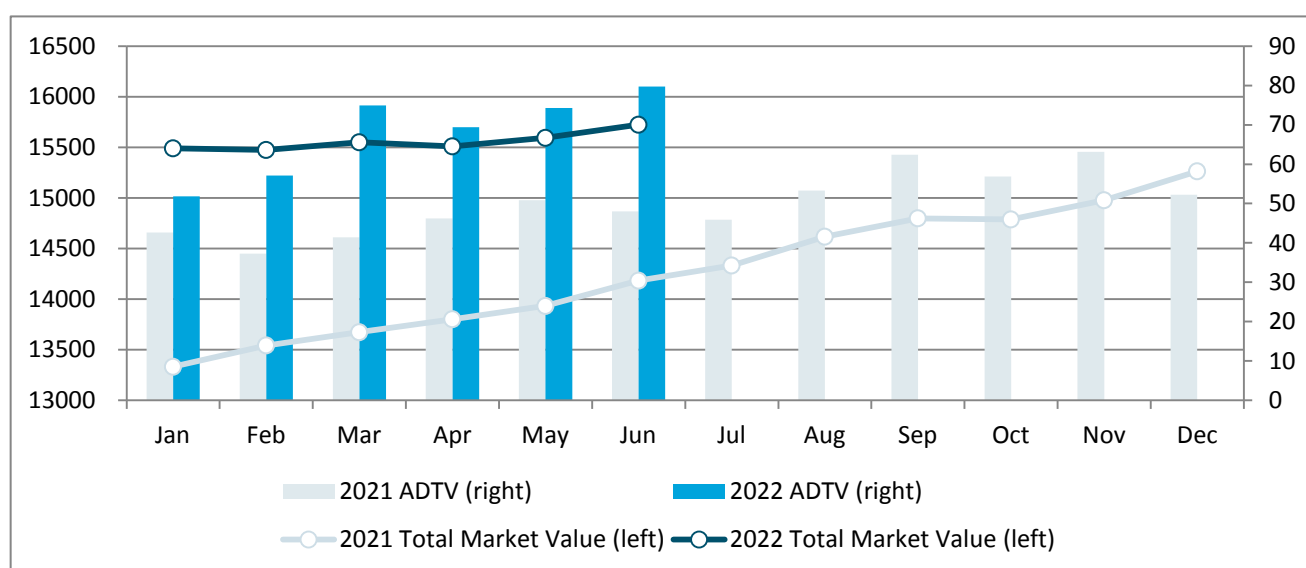
Daily Northbound Trading Value and Net Inflow (RMB bn)



## Bond Market

Bond Types	Market Value (RMB bn)	MoM Change	Average Daily Trading Value (RMB bn)	MoM Change
Treasury bonds	861.61	0.60%	3.47	8.65%
Local government bonds	1038.45	3.42%	0.74	45.53%
Financial bonds	104.43	-0.02%	0.06	15.56%
Corporate bonds	10787.96	0.69%	3.28	2.22%
Enterprise bonds	946.01	1.29%	21.39	-0.02%
Convertible bonds	604.89	3.34%	50.21	10.12%
Asset-backed securities	1380.01	-1.09%	0.60	107.19%
<b>Total</b>	<b>15723.35</b>	<b>0.83%</b>	<b>79.74</b>	<b>7.42%</b>

Monthly Total Market Value and Average Daily Trading Value (RMB bn)

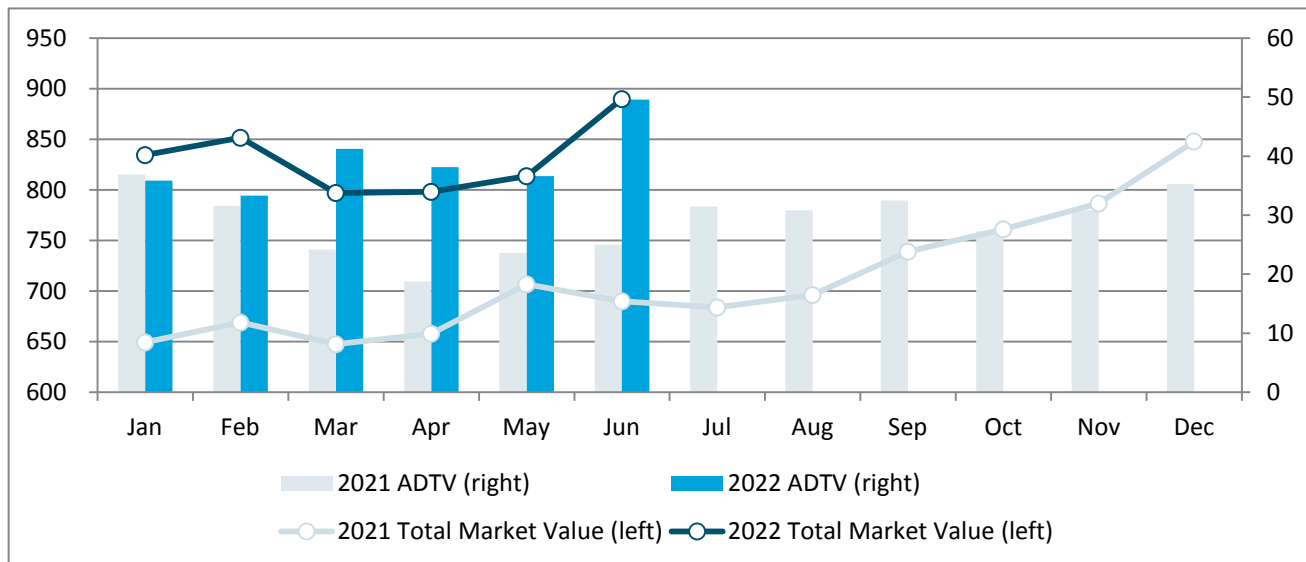


## ETF Market

ETF Types	No. of ETFs	Free-float Market Value (RMB bn)	MoM Change	Average Daily Trading Value (RMB bn)	MoM Change
Equity ETF	354	701.76	8.53%	29.74	33.00%
Bond ETF	11	26.23	10.39%	5.39	39.07%
Commodity ETF (gold)	8	11.39	-1.15%	0.99	10.84%
Cross-Border ETF	42	133.44	9.32%	13.29	41.49%
Publicly Offered Infrastructure REITs	7	16.81	75.03%	0.15	44.55%
<b>Total</b>	<b>422</b>	<b>889.64</b>	<b>9.35%</b>	<b>49.57</b>	<b>35.31%</b>

Note: Exchange-traded money market funds are not included

### Monthly Total Market Value and Average Daily Trading Value (RMB bn)

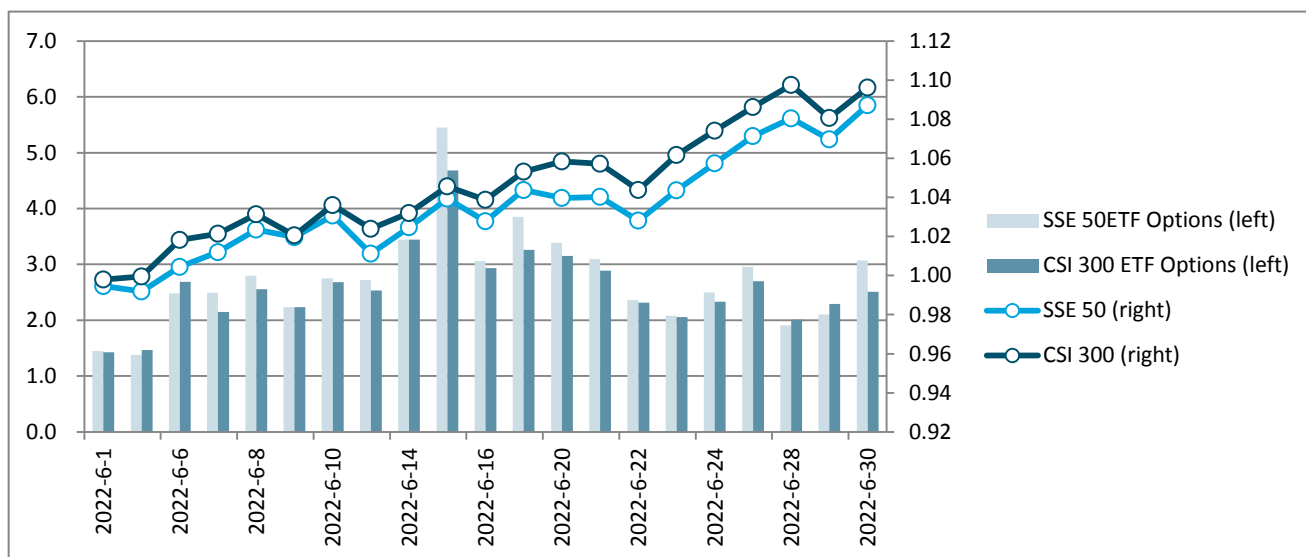


Note: Exchange-traded money market funds are not included

### Derivatives Market

Options	Average Daily No. of Contracts Traded (mn)	MoM Change	No. of Call Options Contracts (mn)	MoM Change	No. of Put Options Contracts (mn)	MoM Change	Put/Call Ratio
SSE 50ETF Options	2.74	27.38%	1.48	31.53%	1.26	22.84%	85.44%
CSI 300 ETF Options	2.59	29.11%	1.35	36.64%	1.24	21.82%	92.17%

### Daily No. of Options Contracts Traded (million) and Index Performance



Note: the indexes are rebased to May 31, 2021.

## Newly Listed Companies

Code	Name	Industry	Market Cap. (RMB bn)
<b>Main Board</b>			
601089.SH	Beijing Winsunny Pharmaceutical Co.,Ltd	Pharmaceuticals	10.10
<b>STAR Market</b>			
688047.SH	Loongson Technology Corporation Limited	Semiconductors	36.95
688119.SH	Sinosteel Luonai Materials Technology Co., Ltd.	Construction Materials	9.92
688120.SH	Hwatsing Technology Co.,Ltd.	Semiconductor Equipment	26.50
688251.SH	Hefei Jingsong Intelligent Technology Co.,Ltd.	IT Consulting & Other Services	2.49
688297.SH	Avic (Chengdu) Uas Co., Ltd.	Aerospace & Defense	35.90
688348.SH	Yuneng Technology Co., Ltd.	Electrical Components & Equipment	39.04
688349.SH	Sany Heavy Energy Co., Ltd.	Heavy Electrical Equipment	47.95

Edited by LI Tianfang, Dept. of International Affairs, Shanghai Stock Exchange.