

## Monthly News Highlights

### **SSE, SZSE, HKEX and CSDC Hold Launching Ceremony for Inclusion of ETFs in Stock Connect**

4 July

The inclusion of ETFs in Stock Connect will help enhance the vibrancy, diversity and liquidity of markets. International investors will have opportunities to invest in the Chinese mainland's ETF market, and the Chinese mainland investors will have more opportunities to realize diversified asset allocation with ETFs, an efficient, transparent, and flexible investment tool.

<http://english.sse.com.cn/news/newsrelease/c/5705188.shtml>

### **SSE Issues the Guidelines on Government-subsidized Rental Housing REITs**

15 July

In order to accelerate the development of government-subsidized rental housing and in accordance with the requirements of the CSRC and the National Development and Reform Commission, the SSE issued and implemented the Guidelines to standardize and guide the pilot issuance of Infrastructure REITs for government-subsidized rental housing.

<http://english.sse.com.cn/news/newsrelease/c/5705742.shtml>

### **SSE Issues Rules and Guidelines for Market-making on the STAR Market**

15 July

The launch of the market-making mechanism for the STAR Market is an important measure to continuously improve the basic system of the capital market and further play the role of a "test field" for the reform of the STAR Market.

<http://english.sse.com.cn/news/newsrelease/c/5705743.shtml>

### **SSE Launches Pilot of Portfolio Credit Protection Contracts to Support Bond Financing of Real Enterprises**

18 July

In order to support the development of private enterprises, and fulfill the requirements of the government work report on improving the bond financing support mechanism for private enterprises, the SSE has recently launched a pilot of portfolio credit protection contract (CDX) with approval of the CSRC, supporting enterprise financing in a market-oriented manner.

<http://english.sse.com.cn/news/newsrelease/c/5705862.shtml>

### **New STAR Market Indexes to be Launched**

22 July

The SSE and CSI announced that the STAR High-End Equipment Manufacturing Index and STAR New Materials Index will be launched on August 15, 2022. A comprehensive index system featuring strategic emerging industries of the STAR market, including STAR Next Generation IT Index, STAR Biology and Medicine Index, and STAR Chip Index, has been established.

<http://english.sse.com.cn/news/newsrelease/c/5706320.shtml>

### **SSE Annual Working Reports**

24 July

- [2021 Work Report of the 3rd Board of Supervisors of SSE](#)
- [2021 Work Report of the President of SSE](#)
- [2021 Work Report of the 5th SSE Board](#)

## China-Switzerland Stock Connect Launched

28 July

With the launch of the China-Switzerland Stock Connect, SSE-listed companies Keda Industrial Group Co., Ltd (600499.SH, Keda) and Ningbo Shanshan Co., Ltd (600884.SH, Shanshan) successfully issued and listed Global Depository Receipts (GDRs) on the SIX Swiss Exchange. This is the first batch of SSE-listed companies entering the SIX Swiss Exchange since the Depository Receipts business under the Stock Connect Scheme was expanded to include the stock market in Switzerland.

<http://english.sse.com.cn/news/newsrelease/c/5706389.shtml>

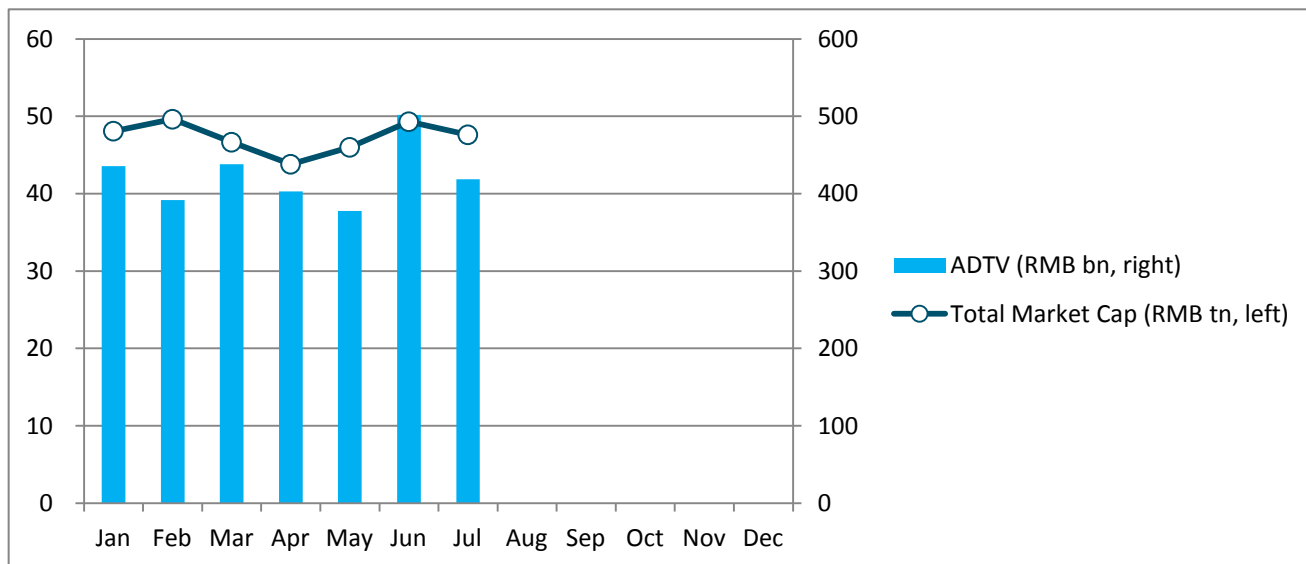
Edited by LI Tianfang, WAN Sijia, Dept. of International Affairs, Shanghai Stock Exchange.

## Equity Market

### ● Market Overview

Boards	No. of Listed Companies	Total Market Cap. (RMB tn)	PE (LYR)	Average Daily Trading Value (RMB bn)	Average Daily Trading Value MoM Change
Main Board A	1657	41.91	12.12	365.34	-17.86%
STAR Market	442	5.70	47.29	53.32	-6.47%

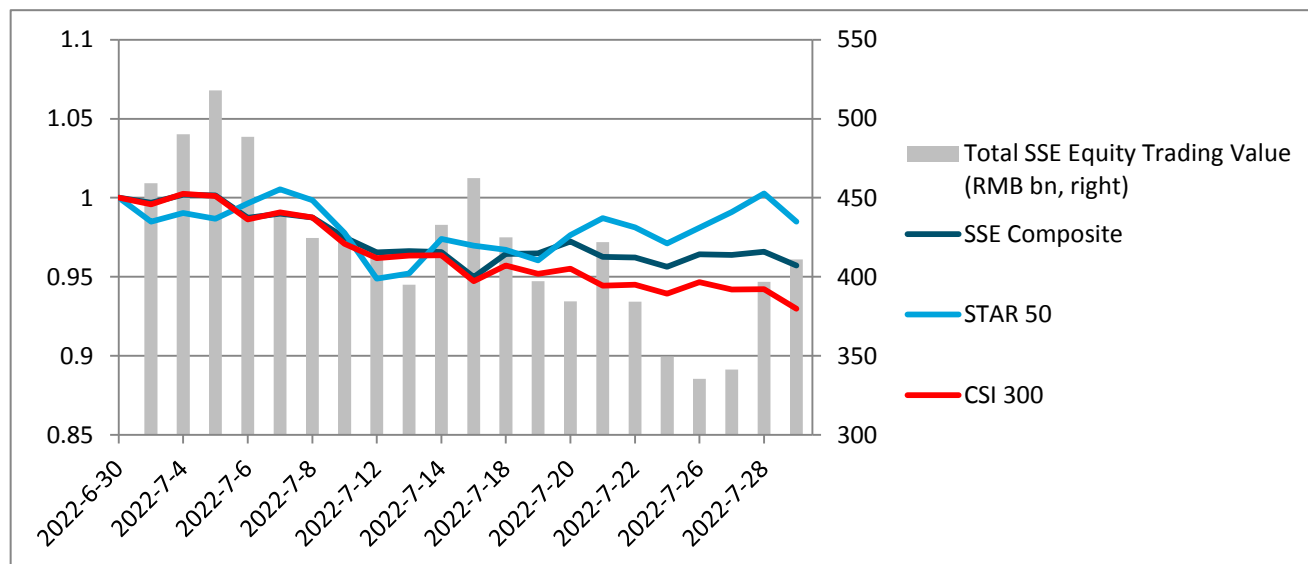
### Shanghai A Shares (Main Board A & STAR Market) Market Cap & Trading Value



### ● Index Performance

Indexes	Closing Price	Monthly Performance	YTD Performance
SSE Composite	3398.62	-4.28%	-10.62%
SSE 50	3058.40	-8.70%	-14.72%
SSE 180	9412.63	-7.46%	-14.02%
STAR 50	1105.67	-1.52%	-22.12%
CSI 300	4485.01	-7.02%	-15.59%

## Index Performance & Equity Trading Value



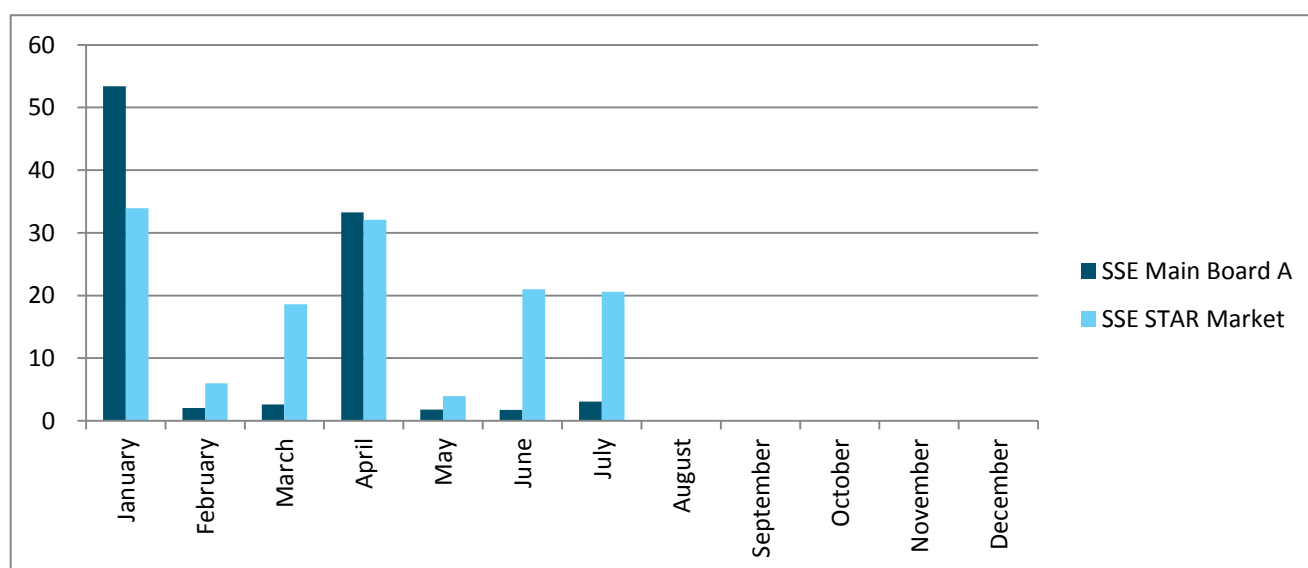
Note: the indexes are rebased to June 30, 2022.

### ● IPO

2022	Main Board A		STAR Market	
	No. of Newly Listed Companies	IPO Proceeds (RMB bn)	No. of Newly Listed Companies	IPO Proceeds (RMB bn)
January	3	53.37	10	33.93
February	3	2.06	4	5.97
March	4	2.61	13	18.62
April	2	33.28	16	32.09
May	3	1.80	4	3.94
June	1	1.75	7	21.01
July	4	3.07	11	20.59
<b>Total</b>	<b>20</b>	<b>97.94</b>	<b>65</b>	<b>136.15</b>

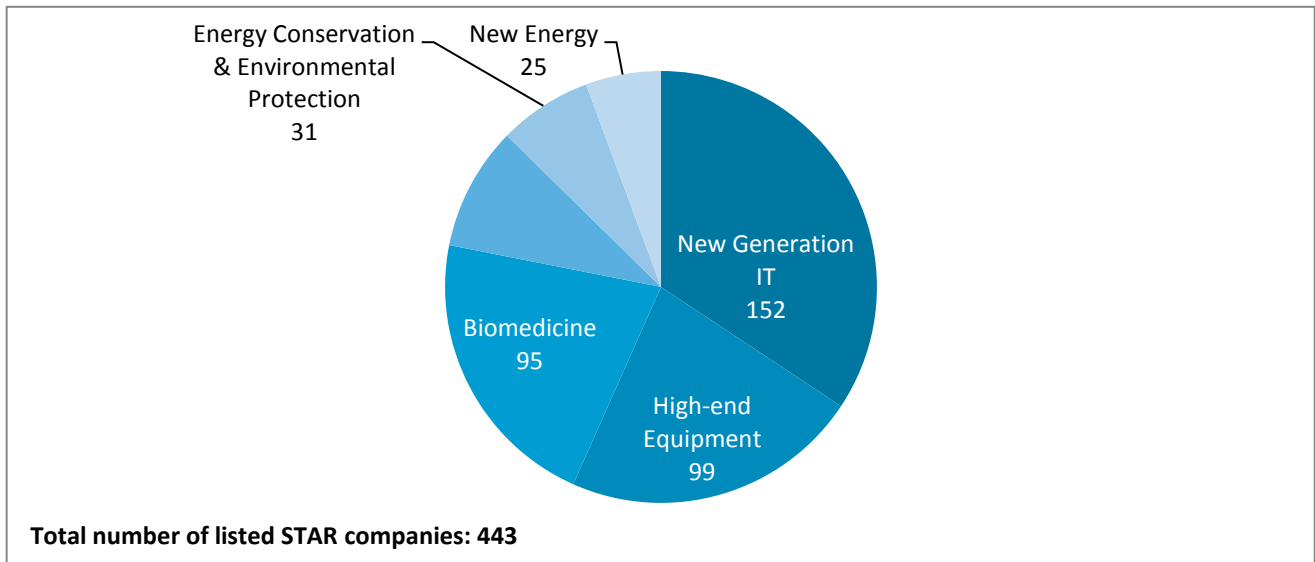
Note: a list of all the newly listed companies this month is available at the last page.

### Monthly IPO Proceeds (RMB bn)

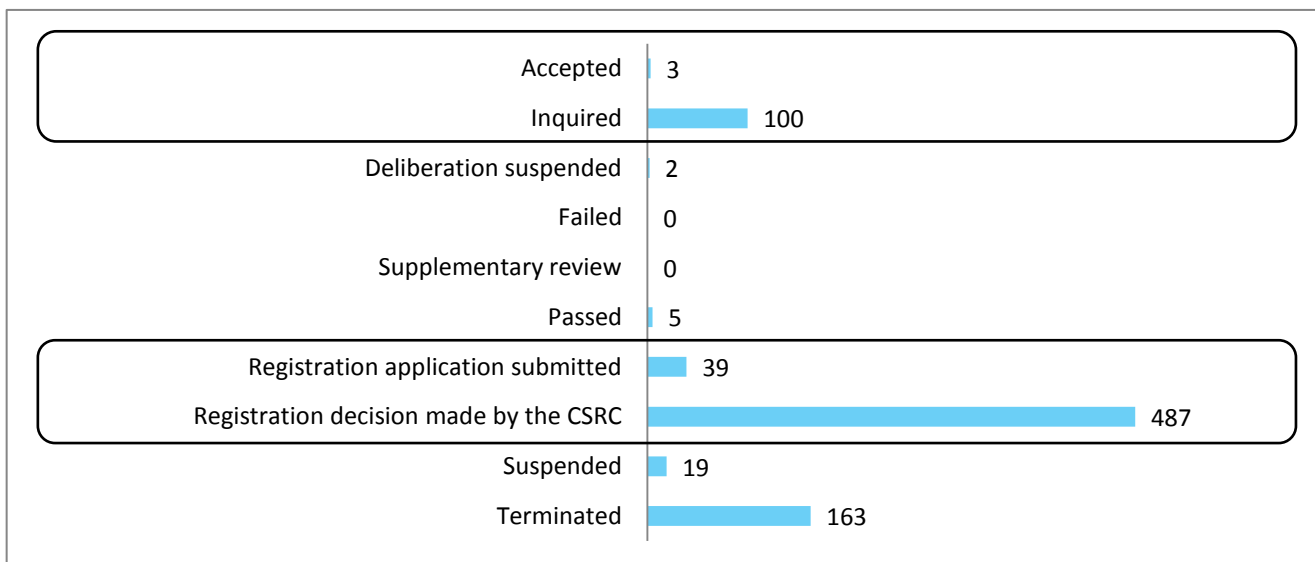


● **STAR Market**

**STAR Market Sector Distribution** (No. of listed companies in the sector, as of August 3)

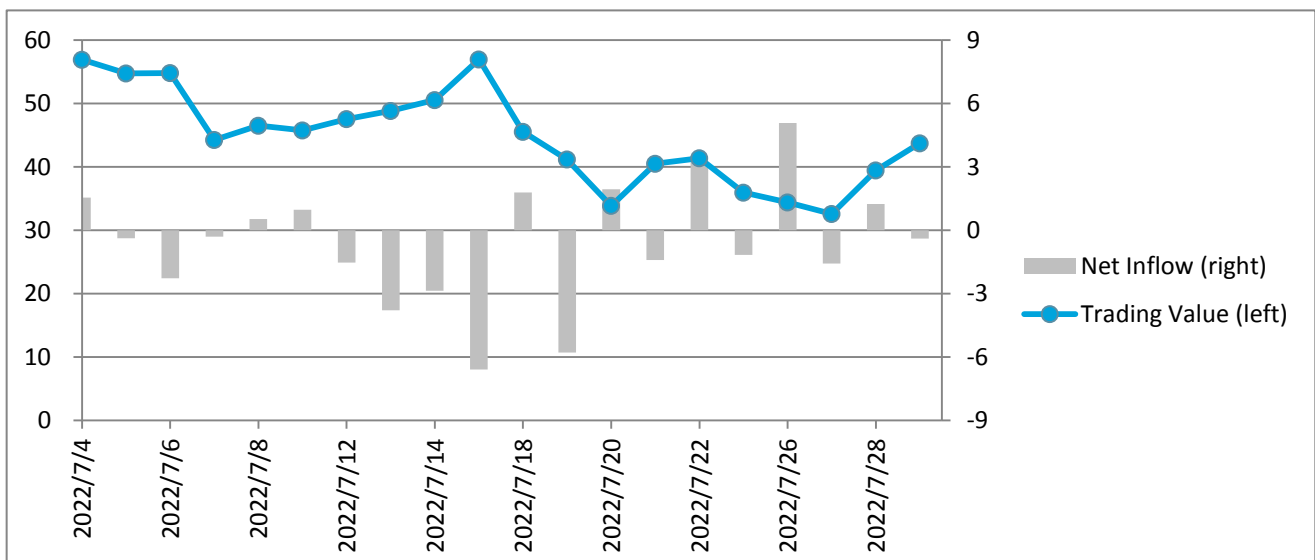


**STAR Market IPO Pipeline**



● **Shanghai-Hong Kong Stock Connect**

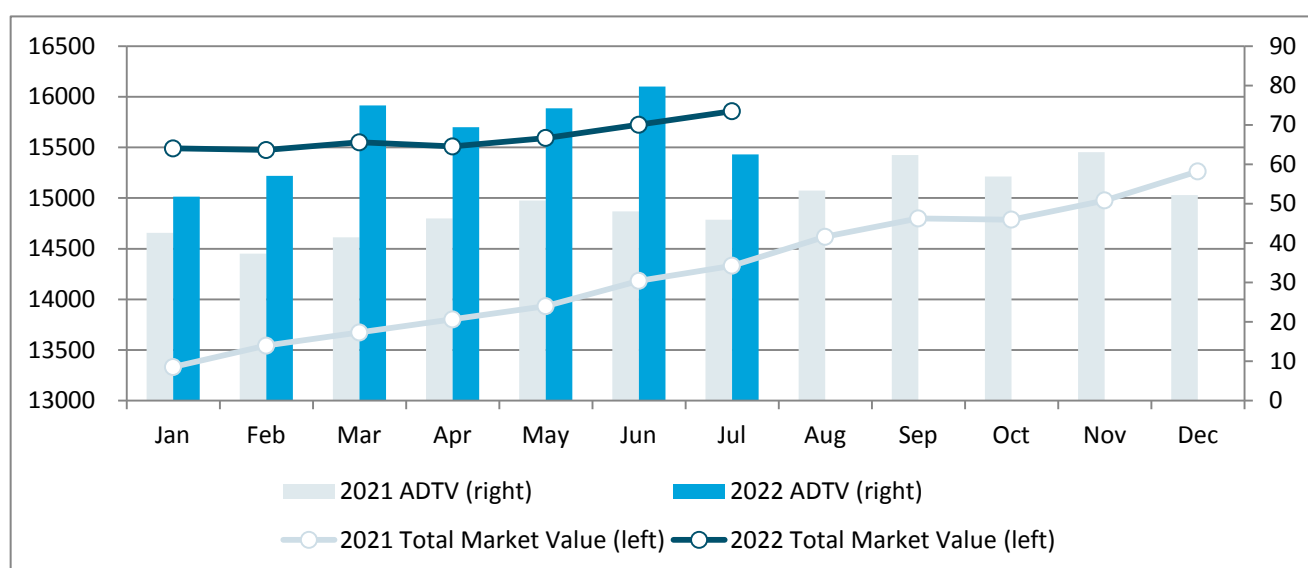
**Daily Northbound Trading Value and Net Inflow** (RMB bn)



## Bond Market

Bond Types	Market Value (RMB bn)	MoM Change	Average Daily Trading Value (RMB bn)	MoM Change
Treasury bonds	883.15	2.50%	4.97	43.32%
Local government bonds	1070.34	3.07%	0.76	3.26%
Financial bonds	104.47	0.04%	0.09	44.67%
Corporate bonds	10816.13	0.26%	3.51	7.04%
Enterprise bonds	956.34	1.09%	19.77	-7.57%
Convertible bonds	621.72	2.78%	33.03	-34.20%
Asset-backed securities	1405.06	1.82%	0.37	-38.09%
<b>Total</b>	<b>15857.21</b>	<b>0.85%</b>	<b>62.51</b>	<b>-21.61%</b>

Monthly Total Market Value and Average Daily Trading Value (RMB bn)

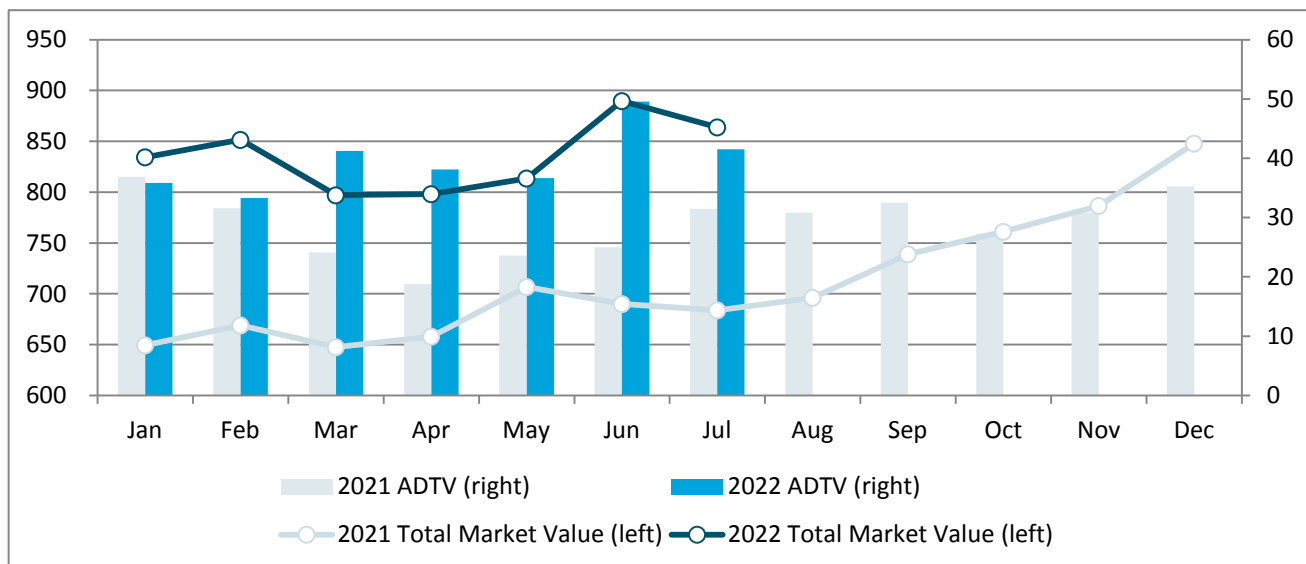


## ETF Market

ETF Types	No. of ETFs	Free-float Market Value (RMB bn)	MoM Change	Average Daily Trading Value (RMB bn)	MoM Change
Equity ETF	362	680.37	-3.05%	25.79	-13.30%
Bond ETF	11	28.17	7.42%	4.45	-17.53%
Commodity ETF (gold)	8	12.75	11.93%	0.90	-8.65%
Cross-Border ETF	45	124.30	-6.86%	10.23	-23.00%
Publicly Offered Infrastructure REITs	8	18.21	8.36%	0.15	-5.12%
<b>Total</b>	<b>434</b>	<b>863.81</b>	<b>-2.90%</b>	<b>41.52</b>	<b>-16.24%</b>

Note: Exchange-traded money market funds are not included

### Monthly Total Market Value and Average Daily Trading Value (RMB bn)

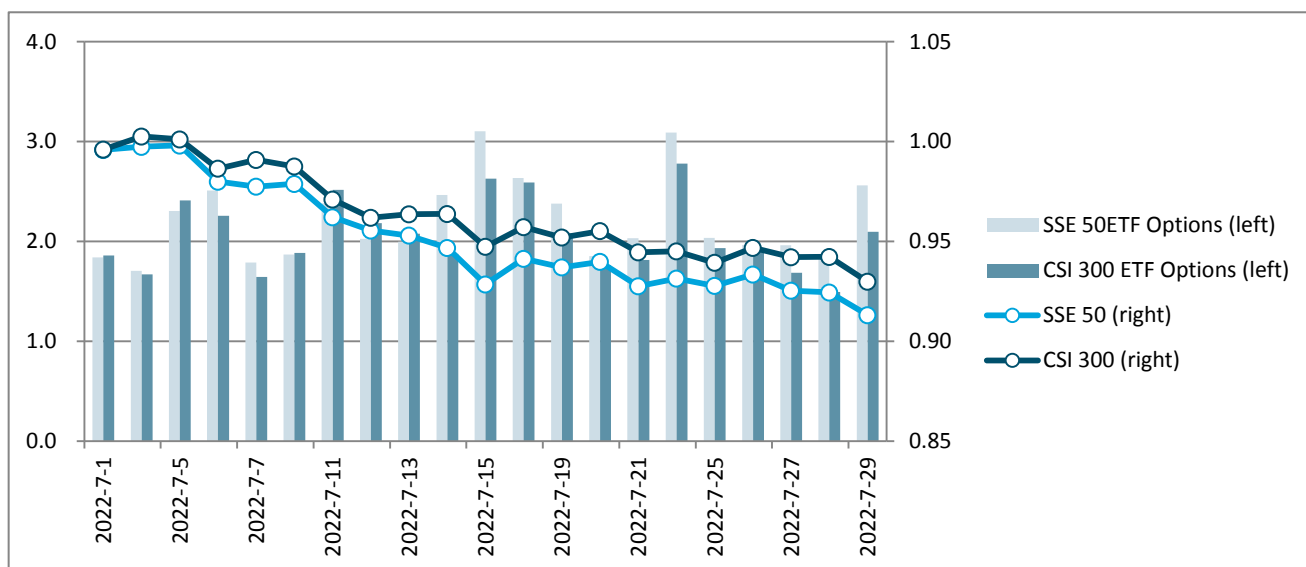


Note: Exchange-traded money market funds are not included

### Derivatives Market

Options	Average Daily No. of Contracts Traded (mn)	MoM Change	No. of Call Options Contracts (mn)	MoM Change	No. of Put Options Contracts (mn)	MoM Change	Put/Call Ratio
SSE 50ETF Options	2.21	-19.56%	1.15	-22.31%	1.06	-16.34%	92.01%
CSI 300 ETF Options	2.05	-20.59%	1.01	-24.98%	1.04	-15.83%	103.42%

### Daily No. of Options Contracts Traded (million) and Index Performance



Note: the indexes are rebased to June 30, 2021.

## Newly Listed Companies

Code	Name	Industry	Market Cap. (RMB bn)
<b>Main Board</b>			
603170.SH	Shanghai Bolex Food Technology Co., Ltd.	Packaged Foods & Meats	12.30
603201.SH	Changshu Tongrun Auto Accessory Co., Ltd.	Auto Parts & Equipment	3.50
603211.SH	Jintuo Technology Co.,Ltd.	Auto Parts & Equipment	3.75
603235.SH	Jiangxi Tianxin Pharmaceutical Co., Ltd.	Pharmaceuticals	15.56
<b>STAR Market</b>			
688053.SH	Chengdu Screen Micro-Electronics Co.,Ltd.	Electronic Components	6.73
688130.SH	Hangzhou Sdic Microelectronics Inc.	Semiconductors	3.87
688231.SH	Jiangsu Longda Superalloy Co., Ltd.	Diversified Metals & Mining	10.37
688237.SH	Hubei Chaozhuo Aviation Technology Co., Ltd.	Aerospace & Defense	5.50
688253.SH	Innovita Biological Technology Co., Ltd.	Biotechnology	4.07
688322.SH	Orbtec Inc.	Electronic Equipment & Instruments	15.56
688332.SH	Shenzhen Bluetrum Technology Co., Ltd.	Semiconductors	7.14
688353.SH	Jiangsu HSC New Energy Materials Co.,LTD.	Commodity Chemicals	12.03
688375.SH	Guobo Electronics Co., Ltd.	Aerospace & Defense	38.12
688382.SH	InventisBio Co., Ltd.	Biotechnology	8.84
688400.SH	LUSTER LightTech Co., LTD.	Electronic Equipment & Instruments	15.83

Edited by LI Tianfang, Dept. of International Affairs, Shanghai Stock Exchange.