

SSE Newsletter – September

Source: SSE, Wind, as of September 30, 2022.

Monthly News Highlights

CSI 500 ETF Options Lists on SSE

Sep 19

On September 19, 2022, the listing ceremony of CSI 500 ETF options was successfully held on the Shanghai Stock Exchange (SSE).

In February 2015, China's first stock option product, SSE 50 ETF options, was listed on the SSE, marking the SSE as the first comprehensive exchange with stock spots and derivatives in China. In December 2019, the listing of CSI 300 ETF options further enriched the risk management tools of large cap blue chips. Over the past seven years, the scale of the SSE's options market has grown steadily and its economic functions have increasingly come into play. The listing of CSI 500 ETF options further meets the diversified risk management needs in the market and injects new vitality into the SSE stock options market.

<http://english.sse.com.cn/news/newsrelease/c/5709323.shtml>

Third China-Japan Capital Markets Forum Held in Virtual Format

Sep. 16

The third China-Japan Capital Markets Forum was held in virtual format on September 7th, 2022. Mr. FANG Xinghai, Vice Chairman of China Securities Regulatory Commission (CSRC), Mr. Junichi NAKAJIMA, Commissioner of Japan Financial Services Agency (JFSA), and Mr. Mitsuhiro HASEGAWA, Chairman of Japan Securities and Exchange Surveillance Commission (SESC) spoke at the Forum.

http://www.csrc.gov.cn/csrc_en/c102030/c5683986/content.shtml

CSRC Issues Revised Regulations on Registration and Settlement of Domestic Securities Transactions by QFII and RQFII

Sep. 9

In order to promote the reform of the DVP (Delivery Versus Payment) and implement the “Measures for the Administration of Domestic Securities and Futures Investment by QFII and RQFII”, the CSRC has issued the revised “Regulations on Registration and Settlement of Domestic Securities Transactions by QFII and RQFII”, which shall come into effect from the date of issue. For more details, please visit:

<http://www.csrc.gov.cn/csrc/c100028/c5642037/content.shtml> (in Chinese)

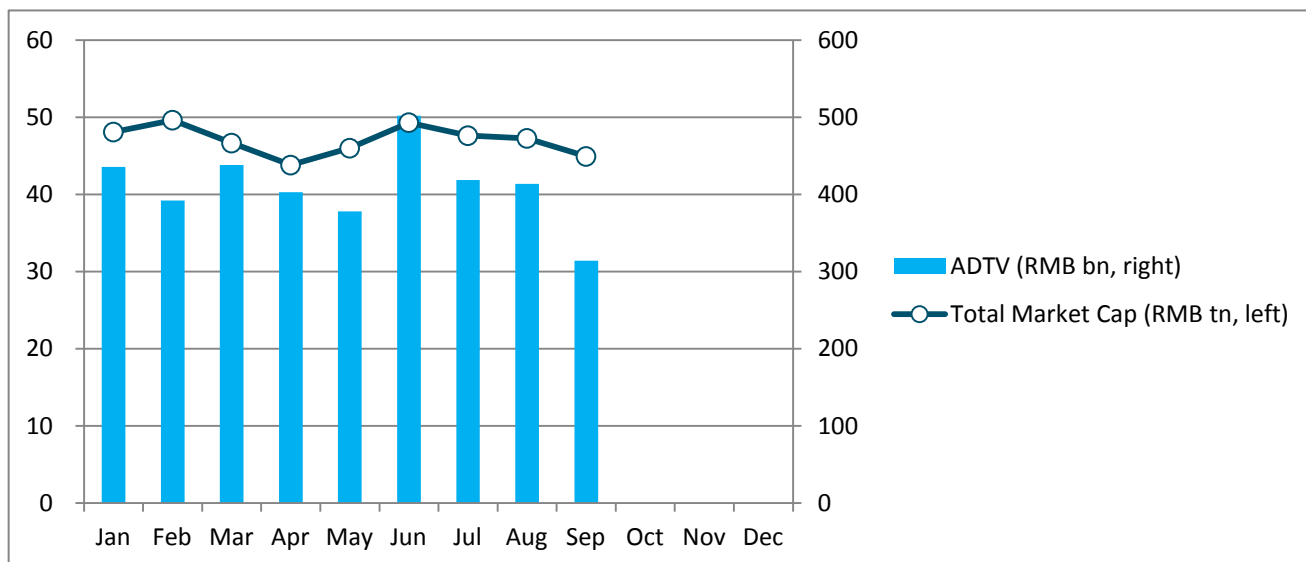
Edited by WAN Sijia, Dept. of International Affairs, Shanghai Stock Exchange.

Equity Market

● Market Overview

| Boards | No. of Listed Companies | Total Market Cap. (RMB tn) | PE (LYR) | Average Daily Trading Value (RMB bn) | Average Daily Trading Value MoM Change |
|--------------|-------------------------|----------------------------|----------|--------------------------------------|--|
| Main Board A | 1661 | 39.39 | 11.38 | 269.54 | -22.26% |
| STAR Market | 473 | 5.53 | 43.84 | 44.37 | -33.61% |

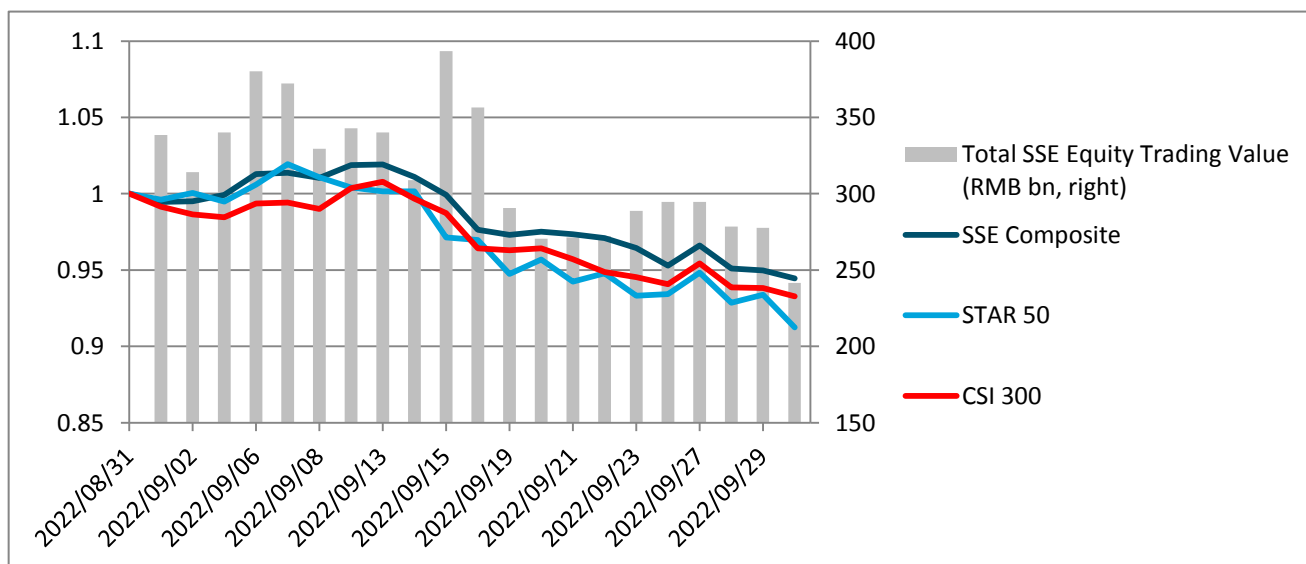
Shanghai A Shares (Main Board A & STAR Market) Market Cap & Trading Value



● Index Performance

| Indexes | Closing Price | Monthly Performance | YTD Performance |
|---------------|---------------|---------------------|-----------------|
| SSE Composite | 3024.39 | -5.55% | -16.91% |
| SSE 50 | 2610.12 | -5.49% | -20.29% |
| SSE 180 | 8106.14 | -5.74% | -19.98% |
| STAR 50 | 939.38 | -8.77% | -32.82% |
| CSI 300 | 3804.89 | -6.72% | -22.98% |

Index Performance & Equity Trading Value



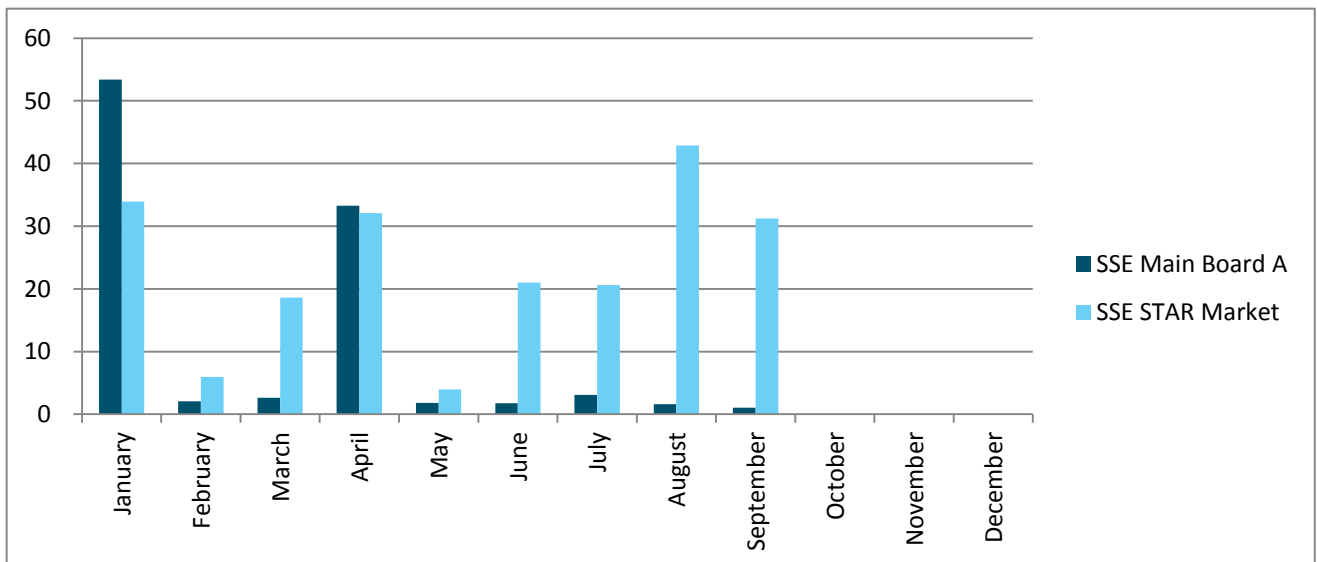
Note: the indexes are rebased to August 31, 2022.

● IPO

| 2022 | Main Board A | | STAR Market | |
|--------------|-------------------------------|-----------------------|-------------------------------|-----------------------|
| | No. of Newly Listed Companies | IPO Proceeds (RMB bn) | No. of Newly Listed Companies | IPO Proceeds (RMB bn) |
| January | 3 | 53.37 | 10 | 33.93 |
| February | 3 | 2.06 | 4 | 5.97 |
| March | 4 | 2.61 | 13 | 18.62 |
| April | 2 | 33.28 | 16 | 32.09 |
| May | 3 | 1.80 | 4 | 3.94 |
| June | 1 | 1.75 | 7 | 21.01 |
| July | 4 | 3.07 | 11 | 20.59 |
| August | 2 | 1.59 | 17 | 42.85 |
| September | 2 | 1.07 | 14 | 31.23 |
| Total | 24 | 100.60 | 96 | 210.23 |

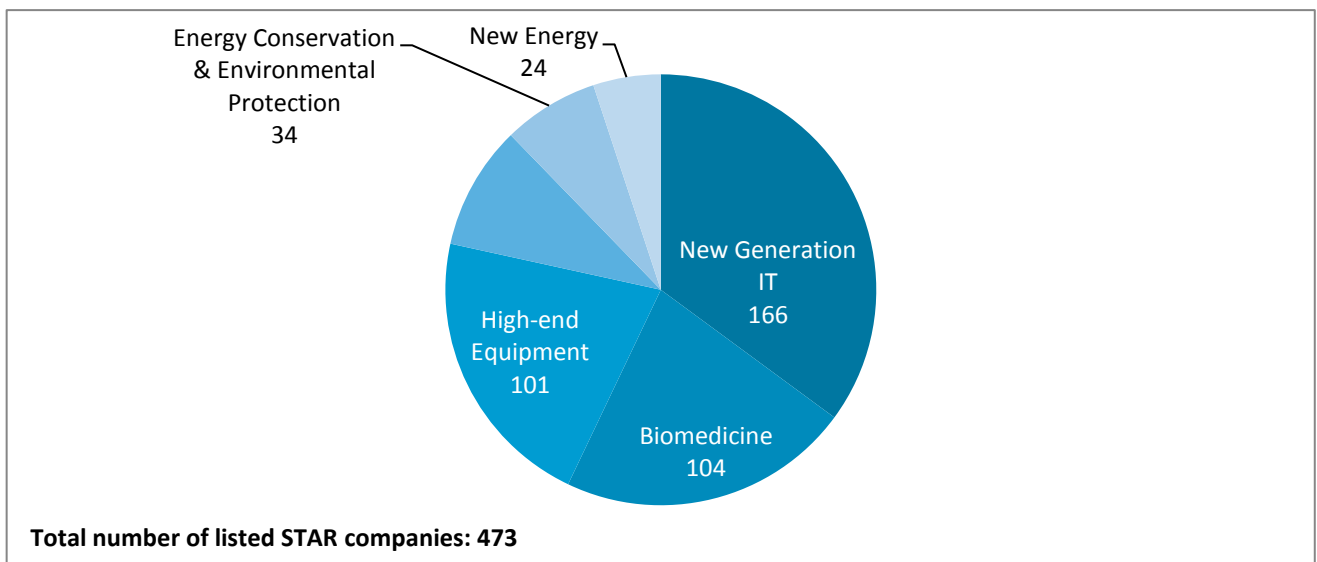
Note: a list of all the newly listed companies this month is available at the last page.

Monthly IPO Proceeds (RMB bn)

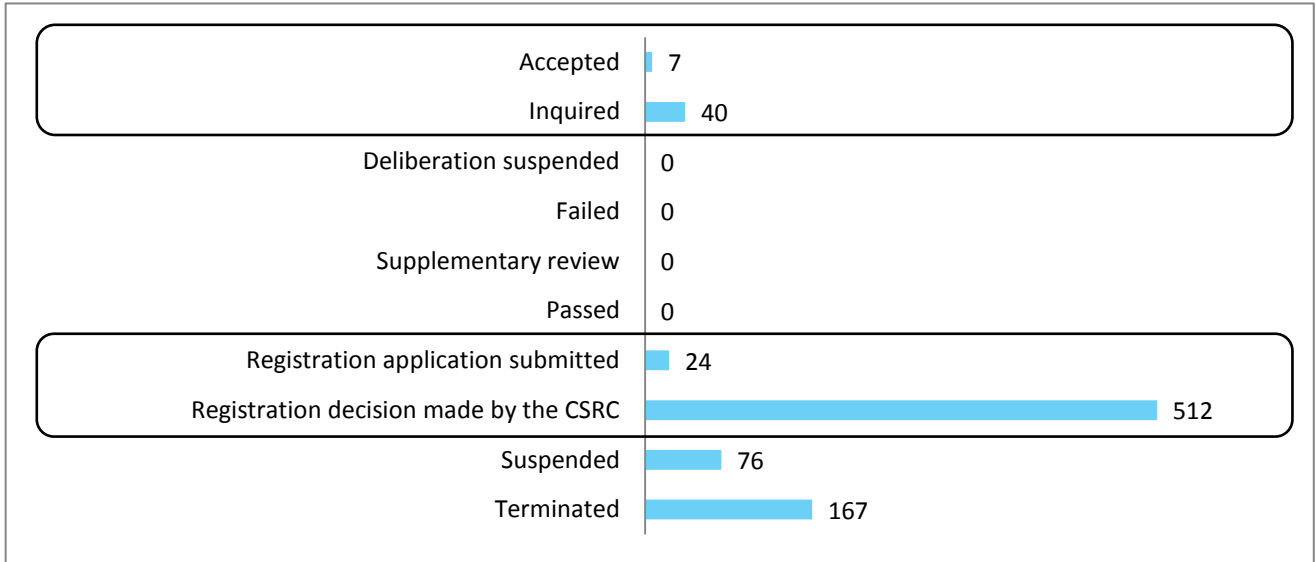


● STAR Market

STAR Market Sector Distribution

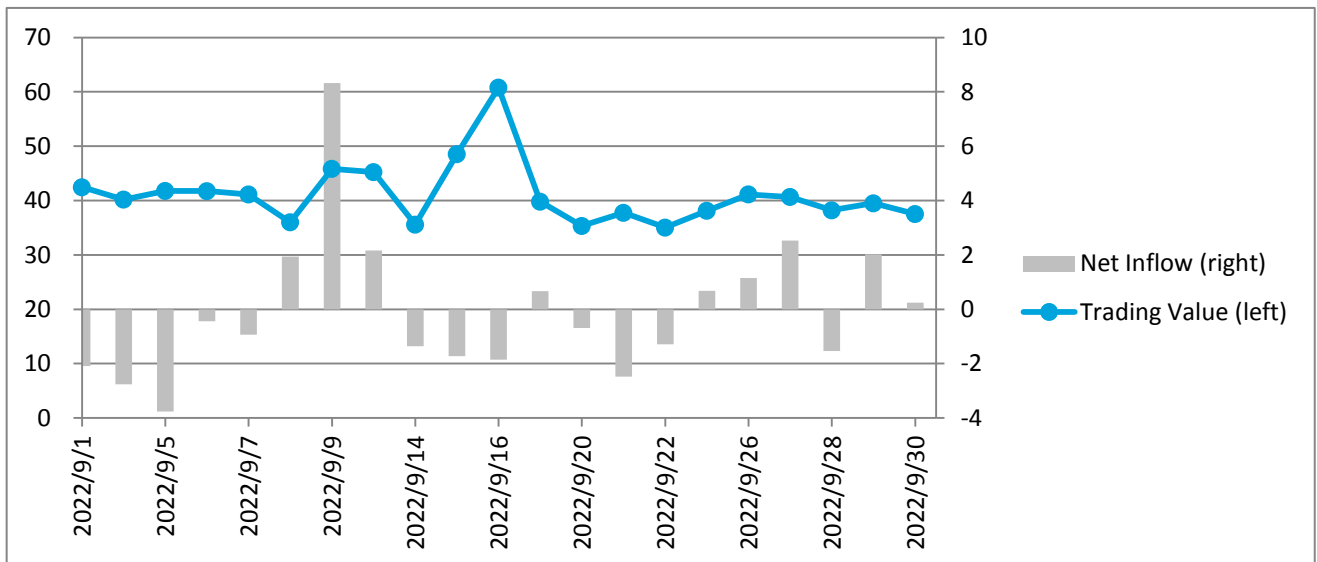


STAR Market IPO Pipeline

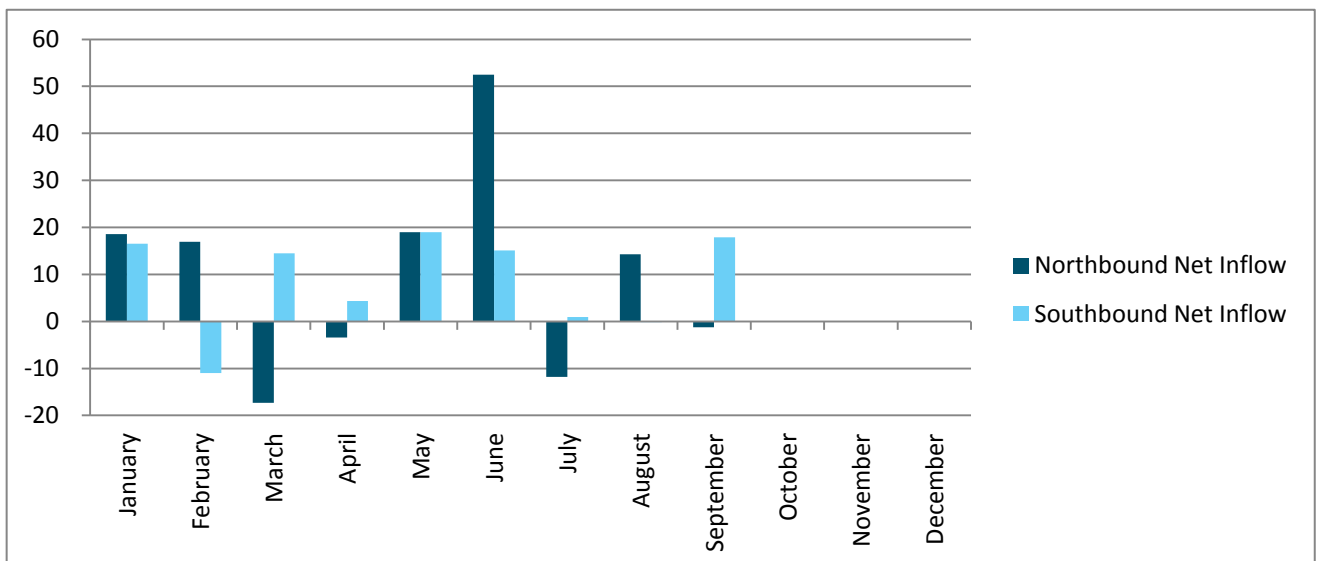


● Shanghai-Hong Kong Stock Connect

Daily Northbound Trading Value and Net Inflow (RMB bn)



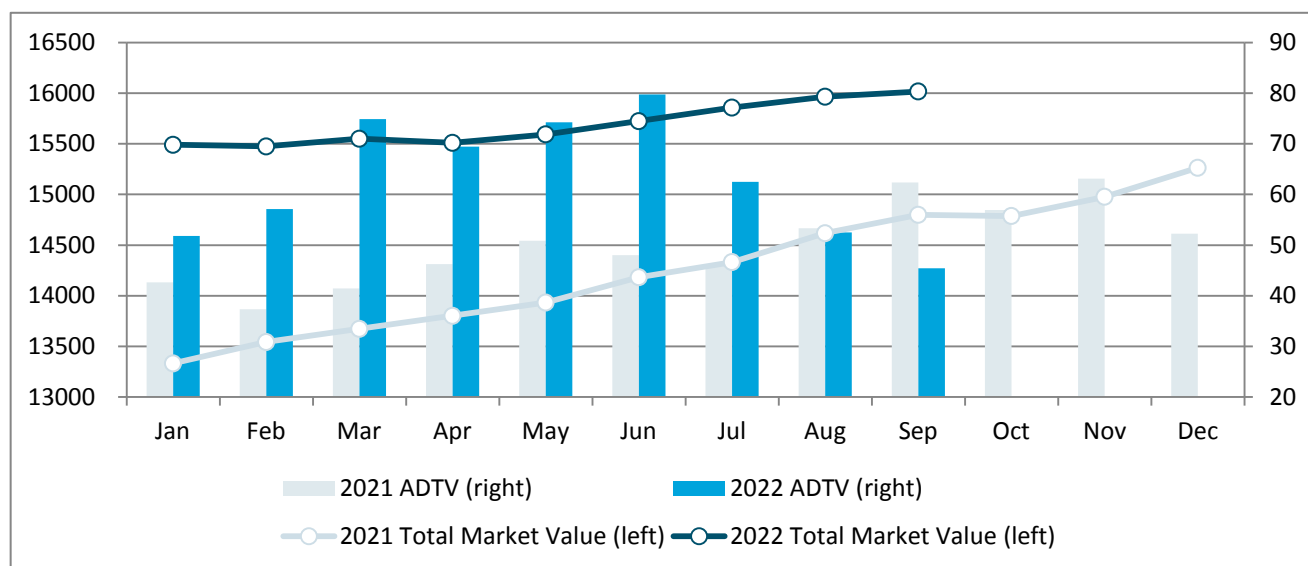
Monthly Northbound and Southbound Net Inflow (RMB bn)



Bond Market

| Bond Types | Market Value (RMB bn) | MoM Change | Average Daily Trading Value (RMB bn) | MoM Change |
|-------------------------|-----------------------|--------------|--------------------------------------|----------------|
| Treasury bonds | 924.39 | 3.49% | 3.49 | -24.20% |
| Local government bonds | 1117.33 | 2.53% | 0.70 | 3.64% |
| Financial bonds | 103.03 | 1.99% | 0.13 | 91.31% |
| Corporate bonds | 10946.41 | 0.33% | 3.07 | -18.12% |
| Enterprise bonds | 956.47 | -0.44% | 20.90 | -0.50% |
| Convertible bonds | 611.39 | -1.91% | 16.87 | -23.65% |
| Asset-backed securities | 1357.47 | -2.05% | 0.28 | -0.46% |
| Total | 16016.49 | 0.33% | 45.45 | -13.42% |

Monthly Total Market Value and Average Daily Trading Value (RMB bn)

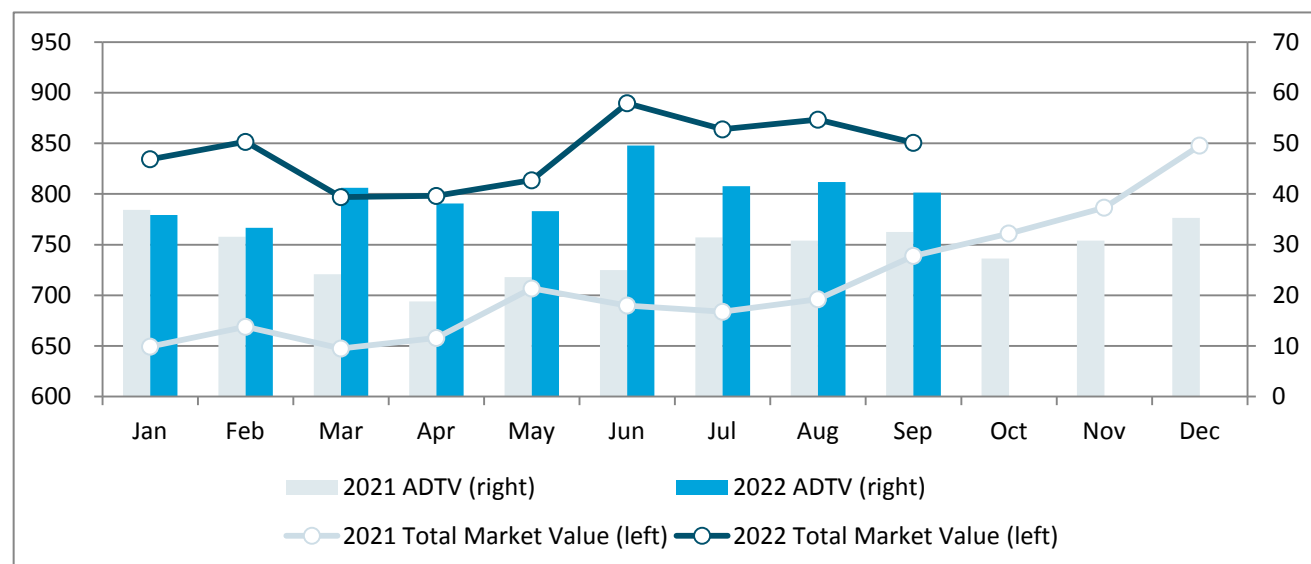


ETF Market

| ETF Types | No. of ETFs | Free-float Market Value (RMB bn) | MoM Change | Average Daily Trading Value (RMB bn) | MoM Change |
|---------------------------------------|-------------|----------------------------------|---------------|--------------------------------------|---------------|
| Equity ETF | 368 | 680.13 | -1.01% | 25.00 | -7.04% |
| Bond ETF | 11 | 27.36 | -6.74% | 6.52 | 1.20% |
| Commodity ETF (gold) | 8 | 11.18 | -1.02% | 1.02 | 19.89% |
| Cross-Border ETF | 47 | 111.82 | -11.02% | 7.52 | -6.21% |
| Publicly Offered Infrastructure REITs | 10 | 20.05 | 0.01% | 0.21 | 22.73% |
| Total | 444 | 850.54 | -2.62% | 40.27 | -4.97% |

Note: Exchange-traded money market funds are not included

Monthly Total Market Value and Average Daily Trading Value (RMB bn)



Note: Exchange-traded money market funds are not included

Derivatives Market

| Options | Average Daily No. of Contracts Traded (mn) | MoM Change | No. of Call Options Contracts (mn) | MoM Change | No. of Put Options Contracts (mn) | MoM Change | Put/Call Ratio |
|---------------------|--|------------|------------------------------------|------------|-----------------------------------|------------|----------------|
| SSE 50ETF Options | 1.85 | 1.56% | 0.99 | 1.01% | 0.87 | 2.20% | 87.73% |
| CSI 300 ETF Options | 1.65 | 2.93% | 0.80 | 1.81% | 0.84 | 4.01% | 105.56% |
| CSI 500 ETF Options | 0.20 | - | 0.10 | - | 0.10 | - | 100.07% |

Newly Listed Companies

| Code | Name | Industry | Market Cap. (RMB bn) | Listing Day Return |
|--------------------|--|------------------------------------|----------------------|--------------------|
| Main Board | | | | |
| 603057.SH | Shanghai Ziyang Foods Co., Ltd. | Packaged Foods & Meats | 13.16 | 44.03% |
| 603182.SH | Shandong Sinoglory Health Food Co., Ltd. | Agricultural Products | 2.84 | 43.98% |
| STAR Market | | | | |
| 688035.SH | Darbond Technology Co., Ltd | Commodity Chemicals | 11.07 | 64.46% |
| 688114.SH | Mgi Tech Co., Ltd. | Health Care Equipment | 44.24 | 14.71% |
| 688132.SH | Bangyan Technology Co.,Ltd. | Communications Equipment | 3.22 | -15.17% |
| 688137.SH | Suzhou Novoprotein Scientific Co., Ltd. | Biotechnology | 5.30 | -28.89% |
| 688184.SH | Zhejiang Power New Energy Co., Ltd. | Electronic Equipment & Instruments | 4.79 | -21.76% |
| 688252.SH | Jadard Technology Inc. | Semiconductors | 6.89 | -4.47% |
| 688275.SH | Hubei Wanrun New Energy Technology Co.,Ltd. | Commodity Chemicals | 17.41 | -27.59% |
| 688293.SH | Shanghai Opm Biosciences Co., Ltd. | Biotechnology | 10.09 | 58.65% |
| 688387.SH | Cict Mobile Communication Technology Co., Ltd. | Communications Equipment | 17.54 | -3.31% |
| 688391.SH | Hi-Trend Technology (Shanghai) Co.,Ltd | Internet Software & Services | 7.10 | 20.09% |
| 688392.SH | Sbt Ultrasonic Technology Co.,Ltd. | Electrical Components & Equipment | 8.58 | 69.46% |

| | | | | |
|-----------|---|----------------------|-------|---------|
| 688428.SH | Innocare Pharma Limited | Biotechnology | 13.21 | -15.41% |
| 688448.SH | Nanjing Cigu Technology Corp.,Ltd. | Industrial Machinery | 1.71 | -11.00% |
| 688455.SH | KENGIC Intelligent Technology Co., Ltd. | Industrial Machinery | 2.49 | -3.20% |

Edited by LI Tianfang, Dept. of International Affairs, Shanghai Stock Exchange.