

SSE Newsletter – February

Source: SSE, Wind, as of February 28, 2023.

Monthly News Highlights

First Private Enterprise Warehousing and Logistics REITs Land on SSE

Feb 9

<http://english.sse.com.cn/news/newsrelease/c/5716099.shtml>

CSRC Releases New Regulations for Filing-based Administration of Overseas Offering and Listing & Supplement Provisions on Confidentiality and Archives Administration

Feb 17

http://www.csrc.gov.cn/csrc_en/c102030/c7125865/content.shtml

Feb 24

http://www.csrc.gov.cn/csrc_en/c102030/c7162676/content.shtml

The First STAR Market GDR Issued and Listed on the SIX Swiss Exchange

Feb 22

<http://english.sse.com.cn/news/newsrelease/c/5716635.shtml>

Southbound Trading Days Optimization under SH-HK Stock Connect to be Implemented

Feb 24

<http://english.sse.com.cn/news/newsrelease/c/5717102.shtml>

507 STAR Market Companies Disclose 2022 Performance – Total Estimated Operating Revenue Over RMB One Trillion and Net Profit Over RMB 100 Billion

Mar 1

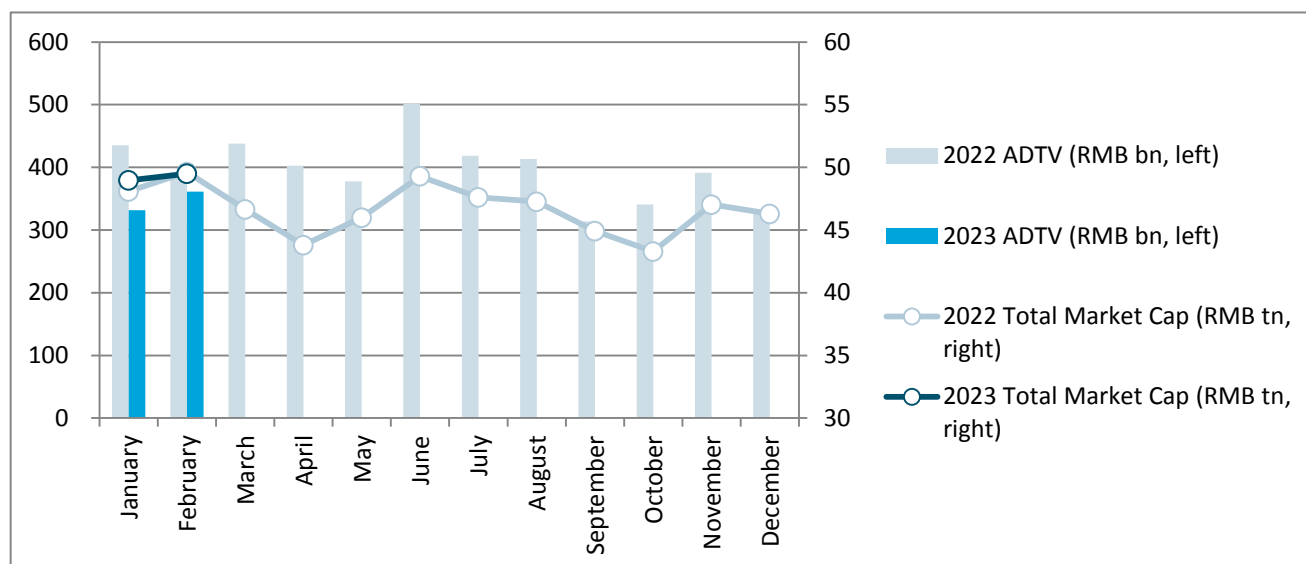
<http://english.sse.com.cn/news/newsrelease/c/5717279.shtml>

Equity Market

● Market Overview

Boards	No. of Listed Companies	Total Market Cap. (RMB tn)	PE (LYR)	Average Daily Trading Value (RMB bn)	Average Daily Trading Value MoM Change
Main Board A	1672	43.16	12.44	302.95	7.02%
STAR Market	507	6.34	47.55	58.44	19.90%

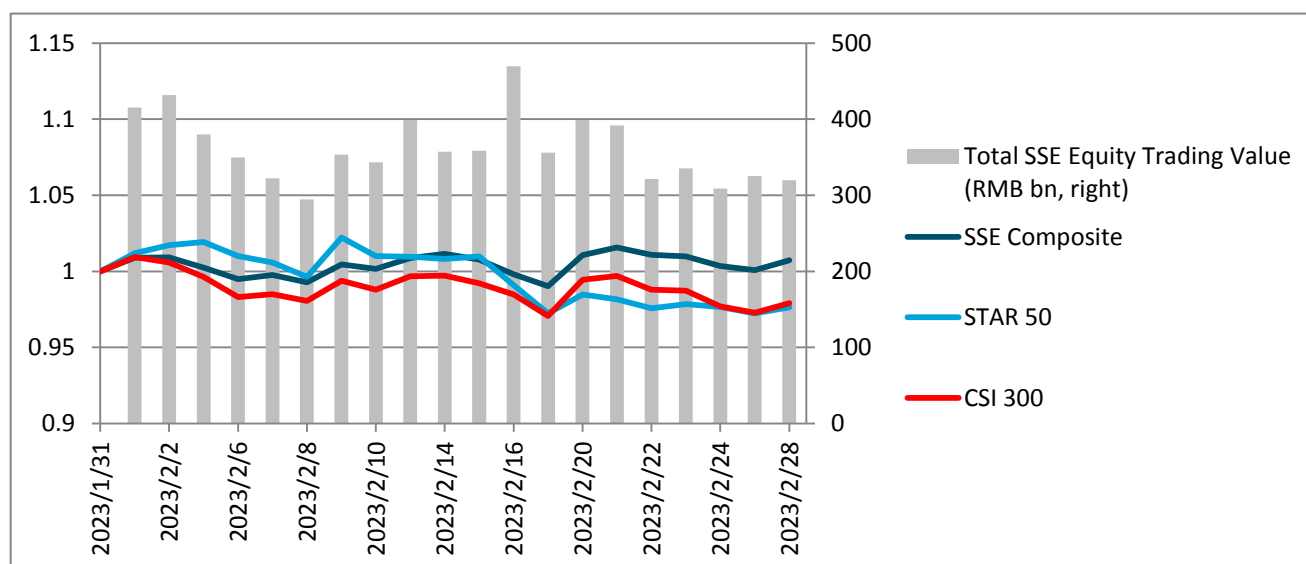
Shanghai A Shares (Main Board A & STAR Market) Market Cap & Trading Value



● Index Performance

Indexes	Closing Price	Monthly Performance	YTD Performance
SSE Composite	3279.61	0.74%	6.16%
SSE 50	2737.15	-2.52%	3.87%
SSE 180	8599.92	-1.41%	4.51%
STAR 50	990.47	-2.36%	3.18%
CSI 300	4069.46	-2.10%	5.11%

Index Performance & Equity Trading Value



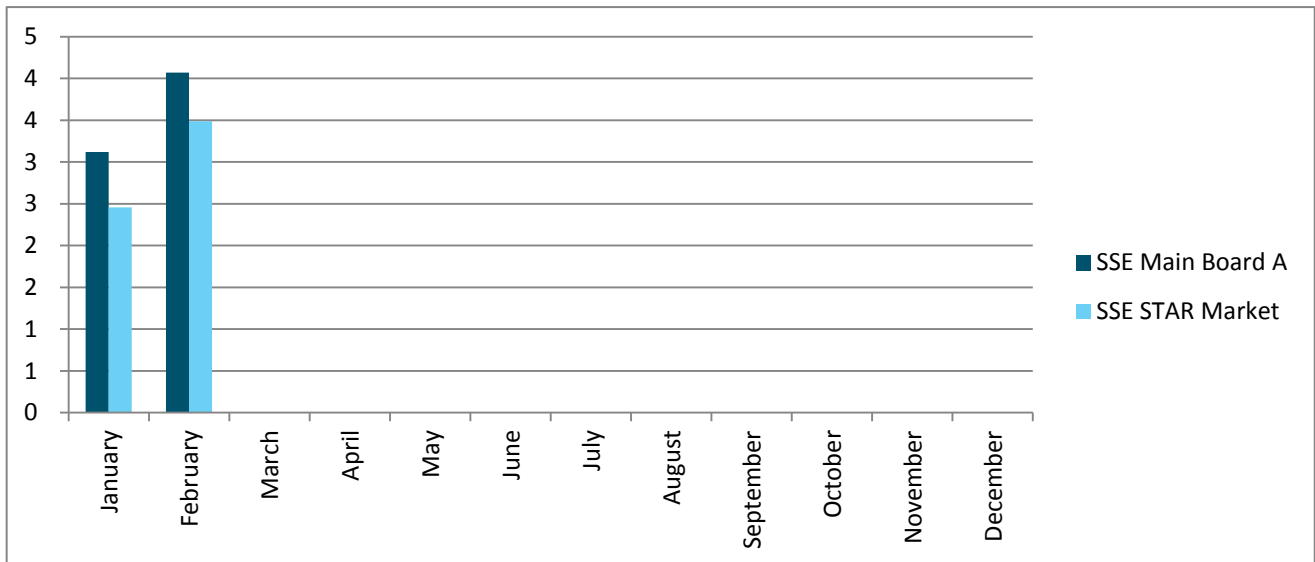
Note: the indexes are rebased to January 31, 2023.

● IPO

2022	Main Board A		STAR Market	
	No. of Newly Listed Companies	IPO Proceeds (RMB bn)	No. of Newly Listed Companies	IPO Proceeds (RMB bn)
January	2	3.12	3	2.46
February	3	4.07	3	3.49
Total	5	7.19	6	5.94

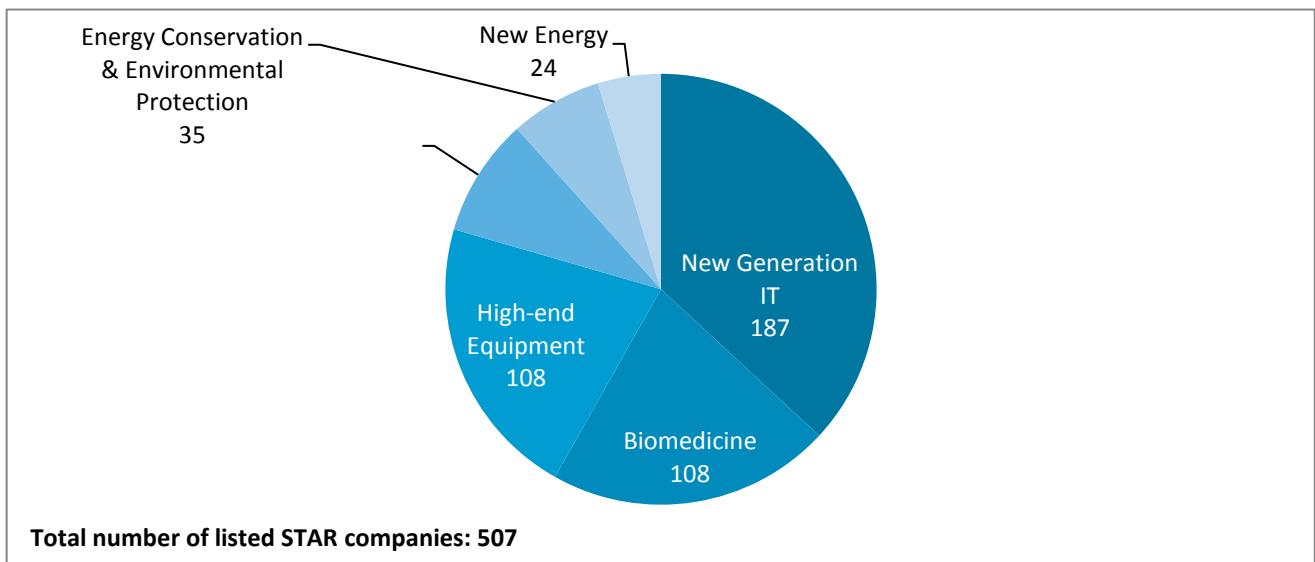
Note: a list of all the newly listed companies this month is available at the last page.

Monthly IPO Proceeds (RMB bn)

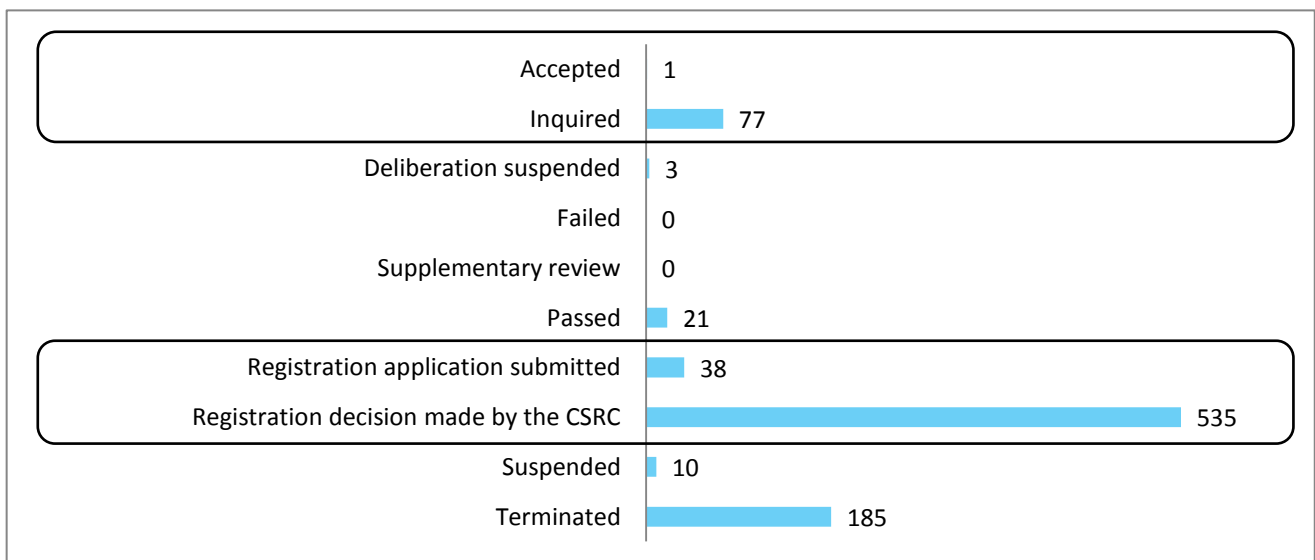


● **STAR Market**

STAR Market Sector Distribution

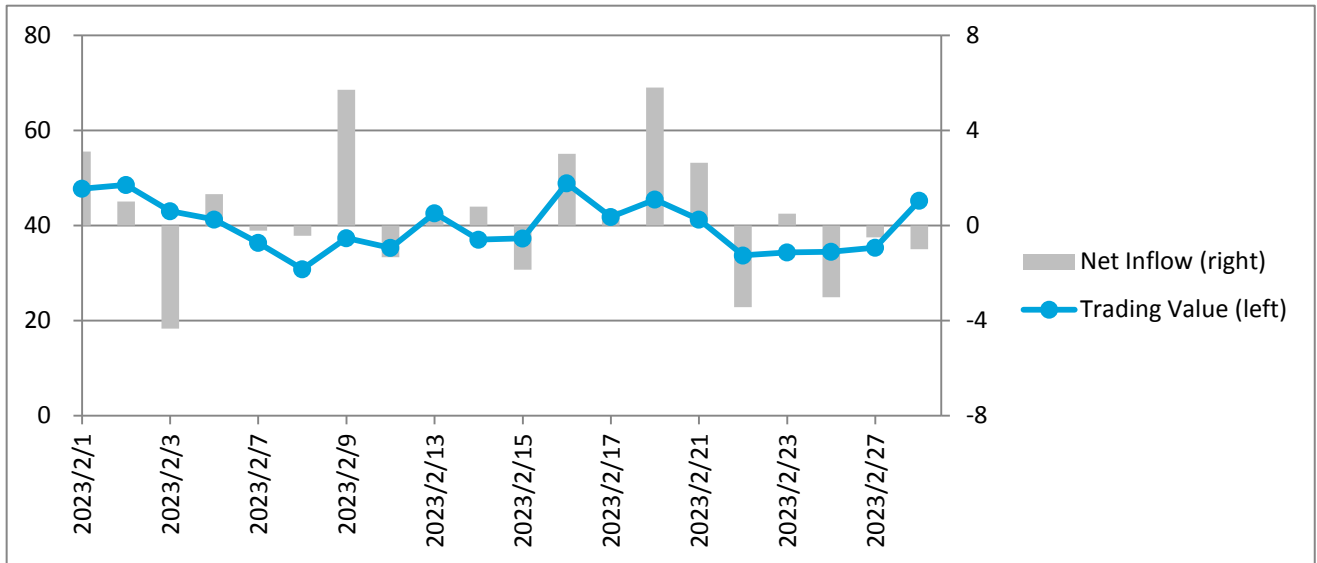


STAR Market IPO Pipeline

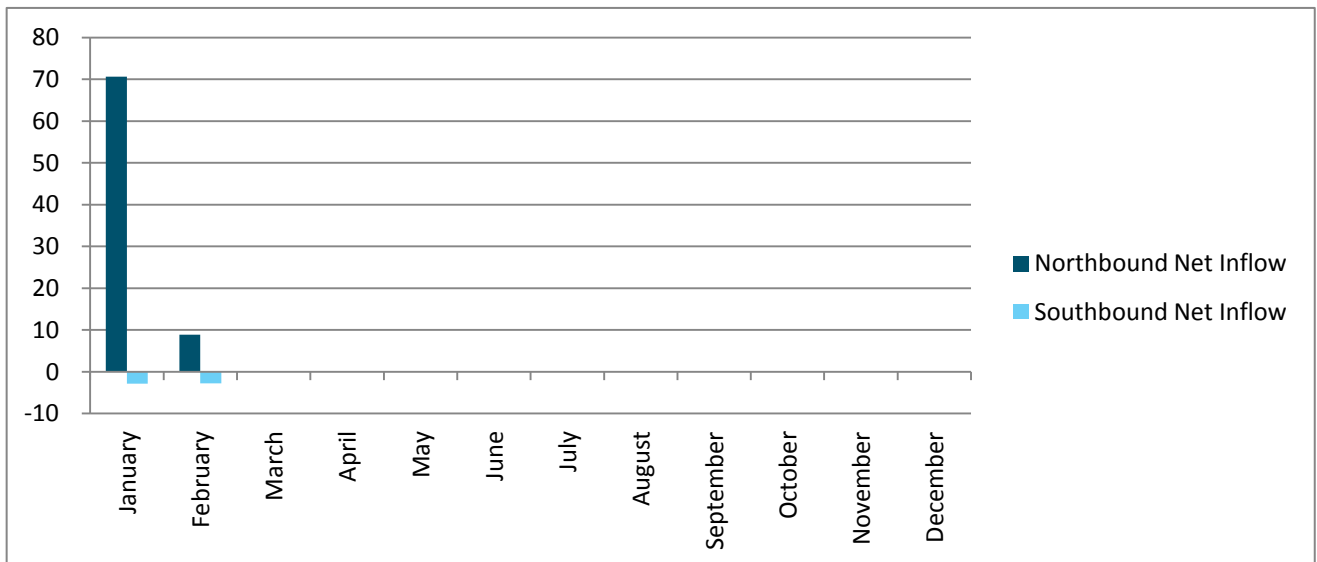


● Shanghai-Hong Kong Stock Connect

Daily Northbound Trading Value and Net Inflow (RMB bn)



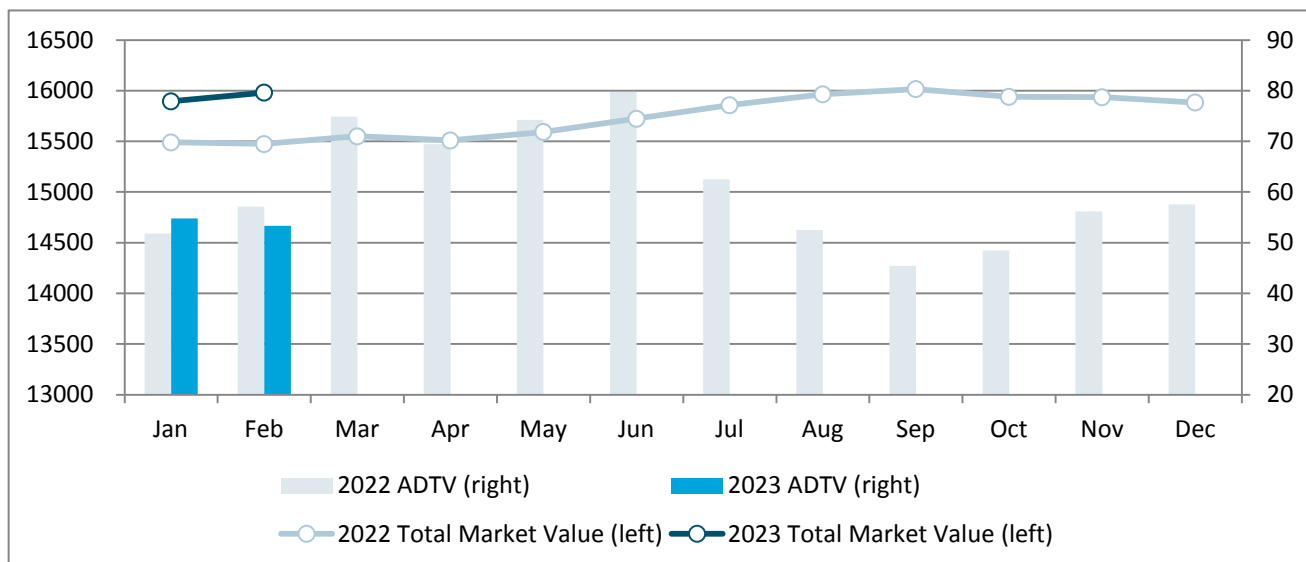
Monthly Northbound and Southbound Net Inflow (RMB bn)



Bond Market

Bond Types	Market Value (RMB bn)	MoM Change	Average Daily Trading Value (RMB bn)	MoM Change
Treasury bonds	897.50	1.71%	3.48	-10.52%
Local government bonds	1168.75	0.75%	1.06	84.13%
Financial bonds	99.87	-0.14%	0.22	-23.64%
Corporate bonds	10750.95	0.22%	4.35	-3.20%
Enterprise bonds	982.12	0.45%	26.67	-0.66%
Convertible bonds	676.96	-0.12%	17.44	-5.28%
Asset-backed securities	1405.53	2.57%	0.12	-60.98%
Total	15981.69	0.54%	53.34	-2.68%

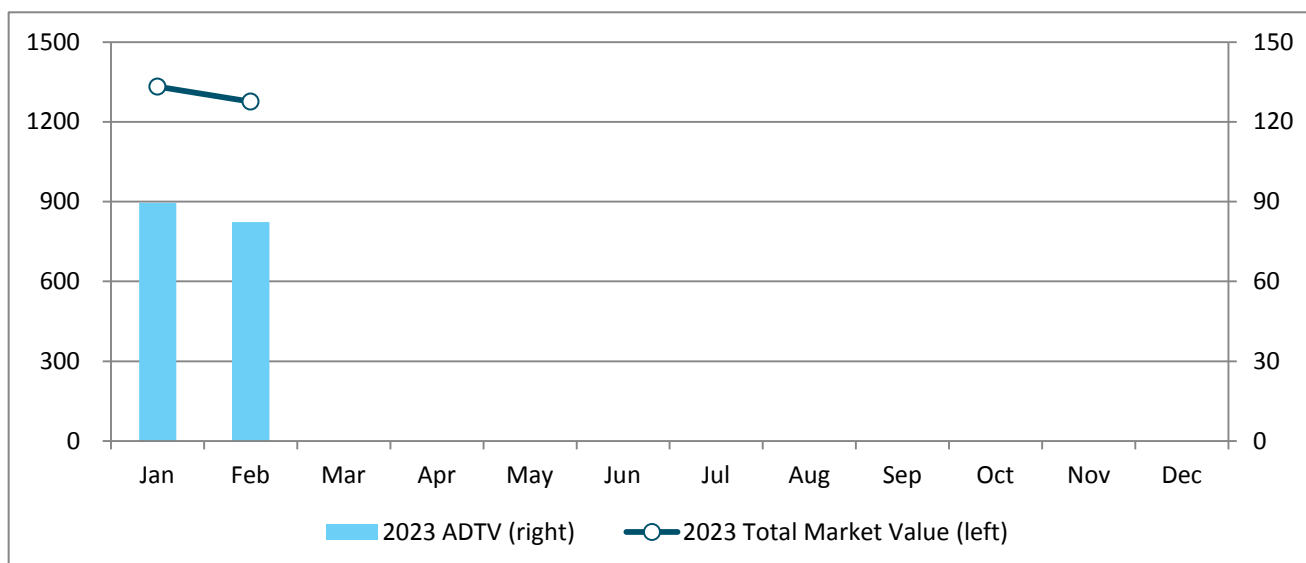
Monthly Total Market Value and Average Daily Trading Value (RMB bn)



ETF Market

ETF Types & REITs	No. of ETFs	Free-float Market Value (RMB bn)	MoM Change	Average Daily Trading Value (RMB bn)	MoM Change
Equity ETF	381	805.56	-6.68%	28.43	-2.15%
Bond ETF	13	27.69	-0.91%	8.64	-16.91%
Commodity ETF (gold)	8	10.05	-3.50%	0.83	-12.42%
Money Market ETF	24	272.42	3.63%	30.30	-13.93%
Cross-Border ETF	50	135.10	-5.65%	13.78	0.66%
Publicly Offered Infrastructure REITs	16	25.19	2.53%	0.32	30.54%
Total	492	1276.00	-4.22%	82.31	-8.09%

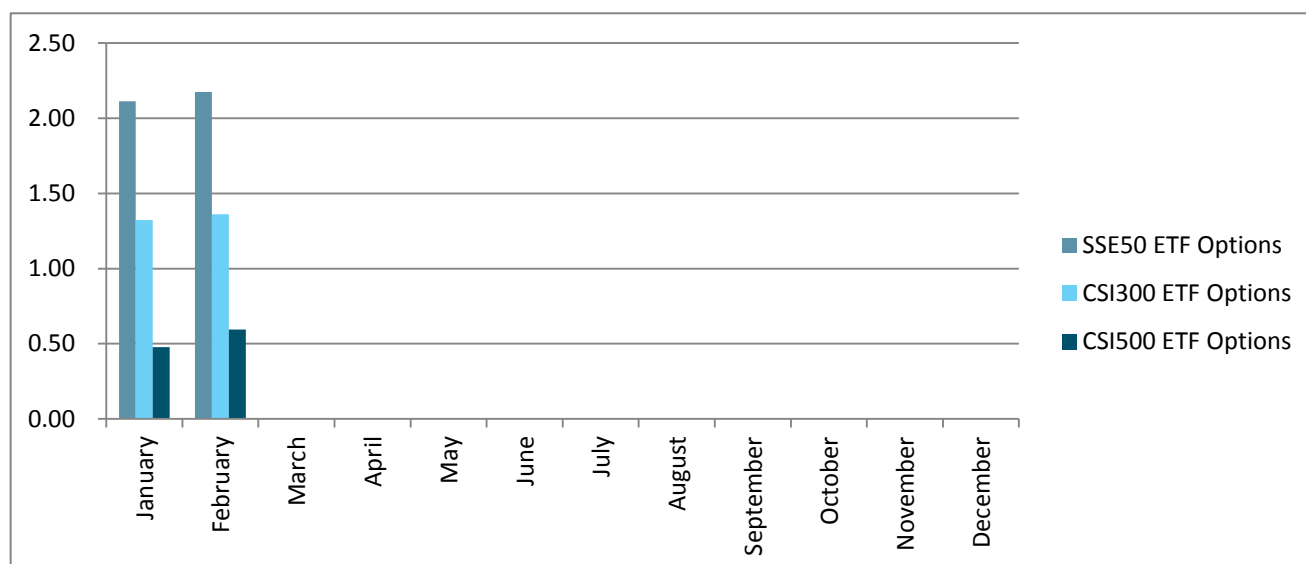
Monthly Total Market Value and Average Daily Trading Value (RMB bn)



Derivatives Market

Options	Average Daily No. of Contracts Traded (mn)	MoM Change	No. of Call Options Contracts (mn)	MoM Change	No. of Put Options Contracts (mn)	MoM Change	Put/Call Ratio
SSE 50ETF Options	2.17	2.88%	1.08	-3.14%	1.09	9.58%	101.63%
CSI 300 ETF Options	1.36	2.89%	0.70	-2.74%	0.67	9.51%	95.78%
CSI 500 ETF Options	0.59	24.54%	0.30	14.89%	0.30	35.96%	99.95%

Monthly Average Daily No. of Contracts Traded (mn)



Newly Listed Companies

Code	Name	Industry	Market Cap. (RMB bn)	Listing Day Return
Main Board				
601059.SH	Cinda Securities Co., Ltd.	Investment Banking & Brokerage	57.73	44.00%
603190.SH	Yantai Yatong Precision Mechanical Corporation	Auto Parts & Equipment	4.33	44.00%
603307.SH	Yangzhou Jinquan Travelling Goods Co., Ltd.	Apparel, Accessories & Luxury Goods	5.01	44.01%
STAR Market				
688307.SH	Jiaxing Zmax Optech Co., Ltd.	Electronic Equipment & Instruments	3.26	102.18%
688486.SH	Lontium Semiconductor Corporation	Semiconductors	6.14	35.87%
688515.SH	Motorcomm Electronic Technology Co., Ltd.	Semiconductors	17.53	152.70%

Edited by LI Tianfang, CHEN Yinghui, and WAN Sijia, Dept. of International Affairs, Shanghai Stock Exchange.

Global Investor Services Team

Dept. of International Affairs

Shanghai Stock Exchange | 上海证券交易所

此文件仅发给指定收件人或机构。其内容可能包含某种享有法律特权或者需要保密的信息。对于任何未经本所明确书面授权而对本文件所载内容进行使用、披露、分发、变更之行为及由此产生的后果，本所概不承担任何责任。如您并非此文件的指定收件人或机构，请立即通知上海证券交易所，并立即销毁此文件。谢谢合作。一旦您收悉此邮件（传真），即表示无条件同意并接受上述所载的免责声明，以及上海证劵交易所在无需给予任何理由或事先通知的情况下，可随时修改、更新、变更或增补本免责声明。

The information contained in this communication is intended solely for the use of the individual or entity to whom it is addressed. It may contain legally privileged or confidential information. The Shanghai Stock Exchange is not liable for any use, disclosure, distribution of or alteration to the contents of this information that has not been expressly authorized in writing by the Shanghai Stock Exchange. If you are not the intended recipient, please inform the Shanghai Stock Exchange of the error and delete the contents immediately. Thank you.

By receiving the email (fax), you expressly agree to the disclaimer above and that the Shanghai Stock Exchange may modify, update, revise or supplement the disclaimer at any time without giving any reason or prior notice.