

Source: SSE, Wind, as of April 29, 2022.

Monthly News Highlights

CSRC Answered Questions on Revised Provisions on Overseas Securities Offering and Listing by Domestic Companies

April 2

On April 2, China Securities Regulatory Commission (CSRC) released the revised Provisions on Strengthening Confidentiality and Archives Administration of Overseas Securities Offering and Listing by Domestic Companies for public comments. The reporter interviewed the officials of relevant department at the CSRC regarding the revised Provisions.

For more information:

http://www.csrc.gov.cn/csrc_en/c102030/c2274405/content.shtml

SSE Virtual Roadshow - Tracking China through Index Investing Successfully Launched

April 7

The SSE and CSI (China Securities Index) successfully organized the virtual roadshow - Tracking China through Index Investing. Representatives from the SSE, CSI and asset management companies discussed the rapid development of SSE ETF market, index invest trends and the outlook of China's economy in 2022. Nearly 200 international investors registered and attended the event.

<http://english.sse.com.cn/news/newsrelease/c/5701240.shtml>

SSE STAR Biomedical Index Released soon

April 12

On April 12, the Shanghai Stock Exchange and China Securities Index Co., Ltd. officially announced the relevant arrangements for the release of the SSE STAR Market Biomedical Index. The Bio Index selects 50 securities of companies in the fields of biomedicine, biomedical engineering, and other biological industries with large market capitalization as index samples. The top 5 heavyweight stocks are Junshi Biosciences, Orient Gene Biotech, CanSino Biologics, Medicilon and Qingdao Haier Biomedical, with a combined weight of 33%.

http://www.sse.com.cn/aboutus/mediacenter/hotandd/c/c_20220412_5700824.shtml (in Chinese)

CSRC Answered Question on DiDi's Delisting Announcement

April 16

Reporter: What are the CSRC's comments on DiDi's announcement today about its voluntary delisting from the U.S. stock exchange?

CSRC Official: We have taken notice of the announcement. This is an independent corporate decision made by the company based on its own situation and market conditions. The CSRC has always maintained a consistent attitude that overseas listing of Chinese companies shall comply with applicable laws, regulations, and regulatory requirements in both their host and home markets, and required listed companies to fully protect the legitimate rights and interests of investors, especially those of small and medium investors.

DiDi's voluntary delisting is a specific case that has no linkage to other Chinese companies listed overseas. It has nothing to do with the ongoing negotiation between Chinese and U.S. regulators over audit oversight cooperation, nor will it affect the advancement of such cooperation.

CPC Stresses Need to Keep Economy Stable

April 30

A key Party meeting has underlined the need to ensure economic stability and coordination of the nation's COVID-19 response and economic growth, reiterating that the country will actively respond to the concerns of foreign businesses to stabilize foreign investment and international trade.

<https://www.chinadaily.com.cn/a/202204/30/WS626c73fba310fd2b29e5a3e4.html>

Edited by WAN Sijia, LI Tianfang, CHEN Yinghui, Dept. of International Affairs, Shanghai Stock Exchange.

Equity Market

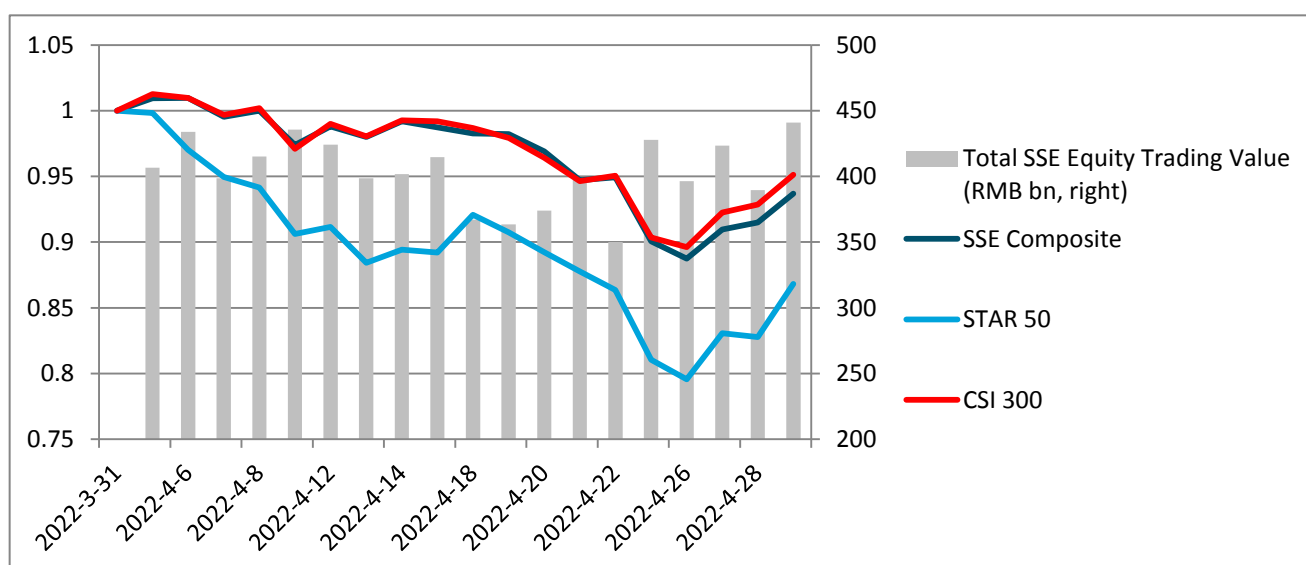
● Market Overview

Boards	No. of Listed Companies	Total Market Cap. (RMB tn)	PE (LYR)	Average Daily Trading Value (RMB bn)	Average Daily Trading Value MoM Change
Main Board A	1666	39.63	14.20	371.01	-6.15%
STAR Market	420	4.17	49.26	31.81	-25.59%

● Index Performance

Indexes	Closing Price	Monthly Performance	YTD Performance
SSE Composite	3047.06	-6.31%	-16.28%
SSE 50	2805.34	-3.23%	-14.32%
SSE 180	8595.66	-4.17%	-15.15%
STAR 50	947.15	-13.19%	-32.26%
CSI 300	4016.24	-4.89%	-18.71%

Index Performance & Equity Trading Value



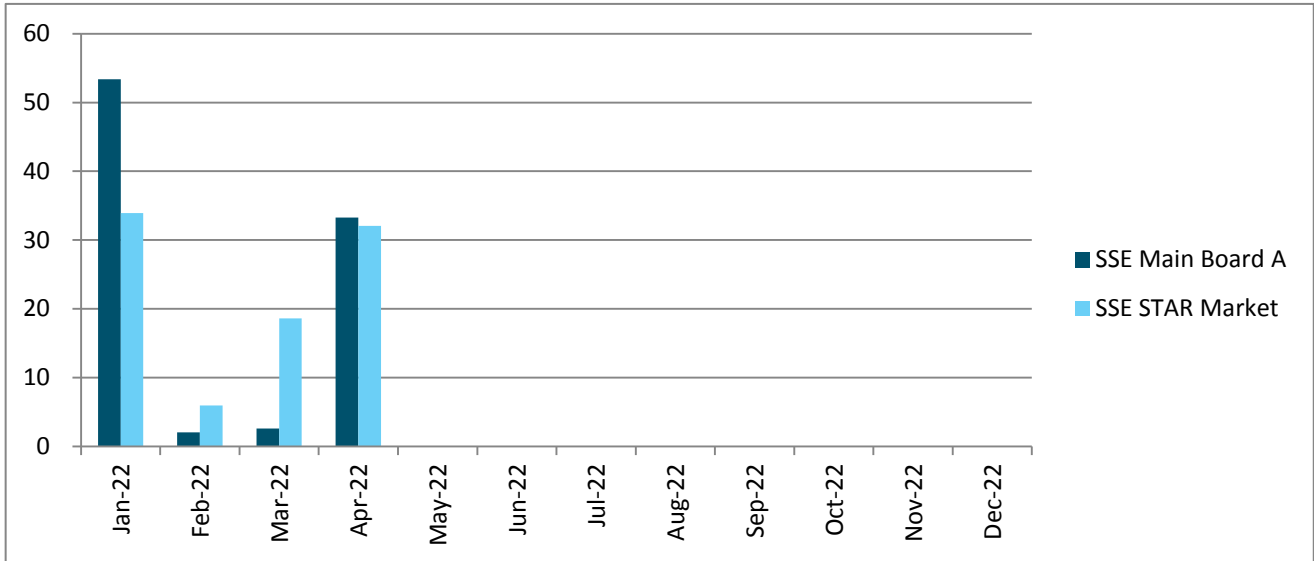
Note: the indexes are rebased to March 31, 2022.

● IPO

2022	Main Board A		STAR Market	
	No. of Newly Listed Companies	IPO Proceeds (RMB bn)	No. of Newly Listed Companies	IPO Proceeds (RMB bn)
January	3	53.37	10	33.93
February	3	2.06	4	5.97
March	4	2.61	13	18.62
April	2	33.28	16	32.09
Total	12	91.32	43	90.61

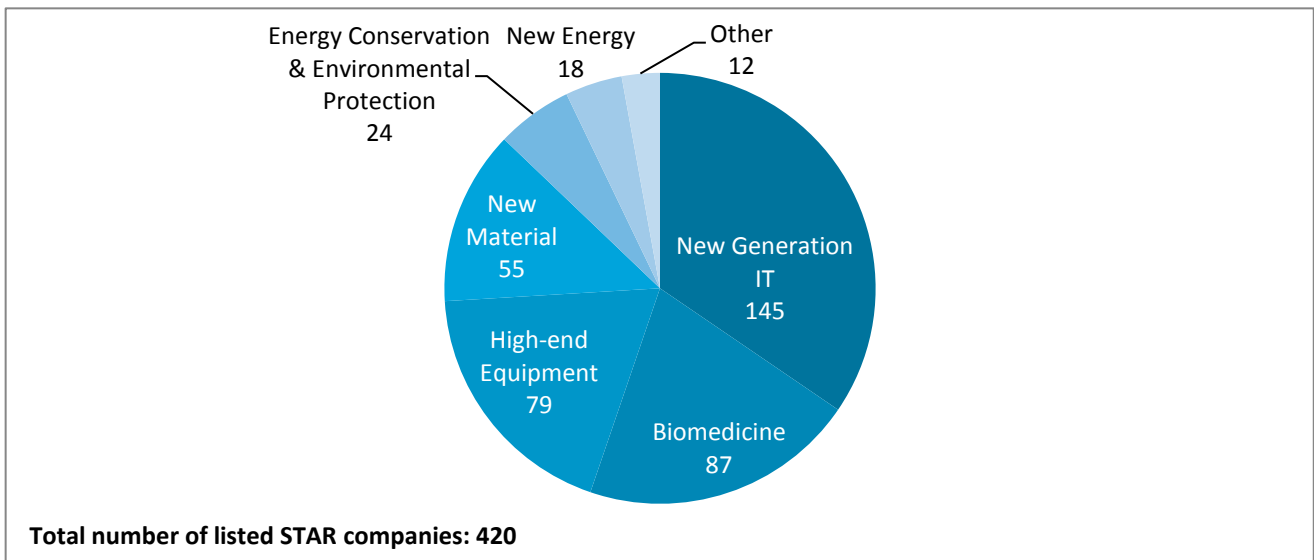
Note: a list of all the newly listed companies this month is available at the last page.

Monthly IPO Proceeds (RMB bn)

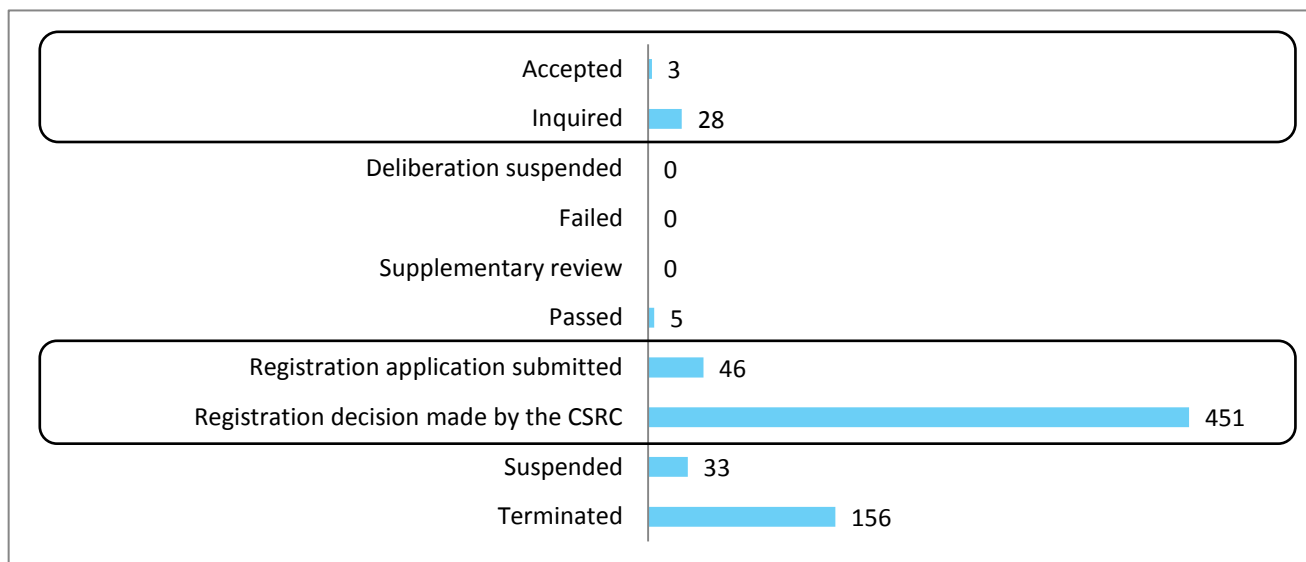


● STAR Market

STAR Market Sector Distribution (No. of listed companies in the sector)

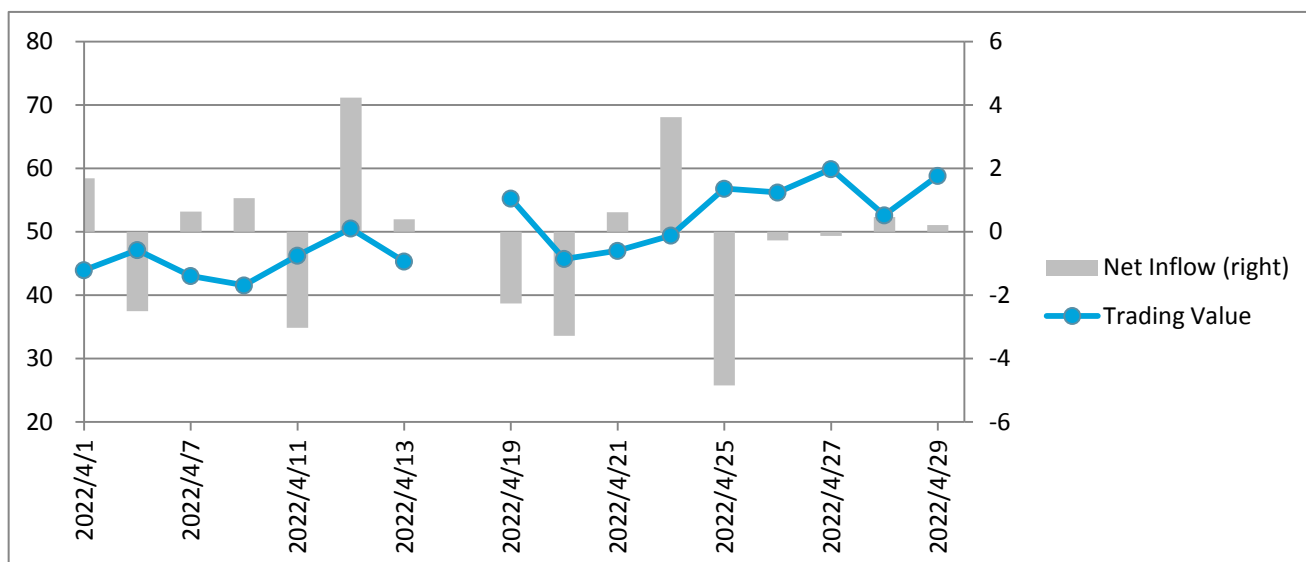


STAR Market IPO Pipeline (No. of issuers in the registration process)



● Shanghai-Hong Kong Stock Connect

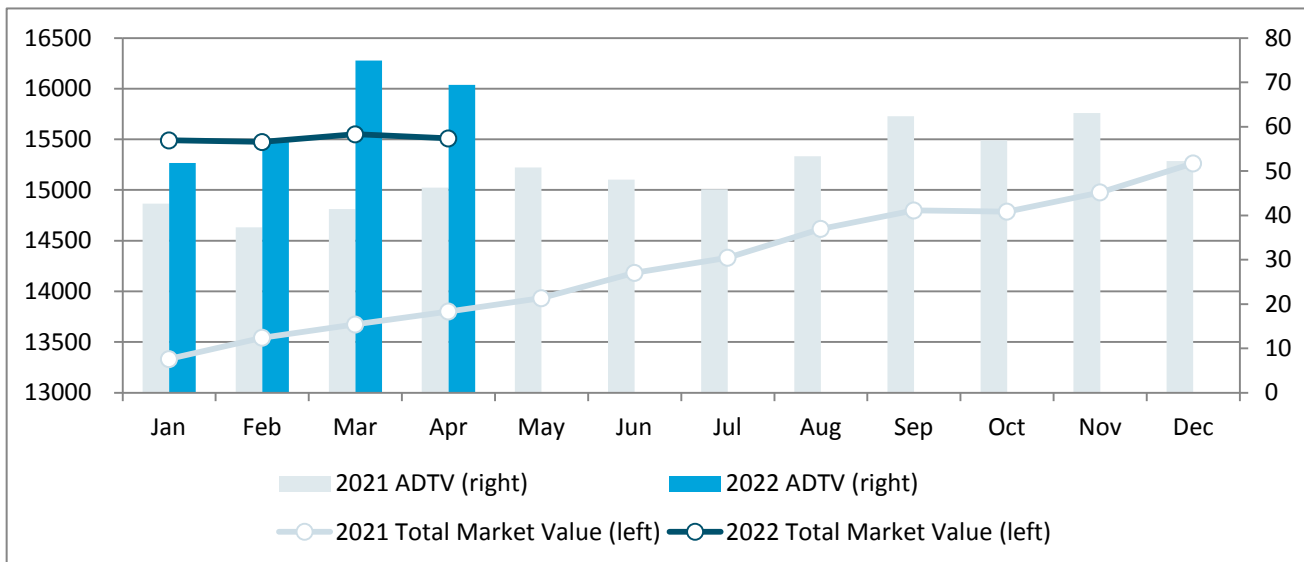
Northbound Trading Value and Net Inflow (RMB bn)



Bond Market

Bond Types	Market Value (RMB bn)	MoM Change	Average Daily Trading Value (RMB bn)	MoM Change
Treasury bonds	835.89	0.51%	3.93	23.28%
Local government bonds	1000.11	0.60%	0.54	14.13%
Financial bonds	109.26	-15.44%	0.09	-55.95%
Corporate bonds	10659.78	-0.18%	3.38	1.43%
Enterprise bonds	916.37	-0.68%	25.25	-0.31%
Convertible bonds	562.23	4.30%	35.82	-14.47%
Asset-backed securities	1425.78	-1.98%	0.41	-18.23%
Total	15509.42	-0.26%	69.41	-7.32%

Monthly Total Market Value and Average Daily Trading Value (RMB bn)

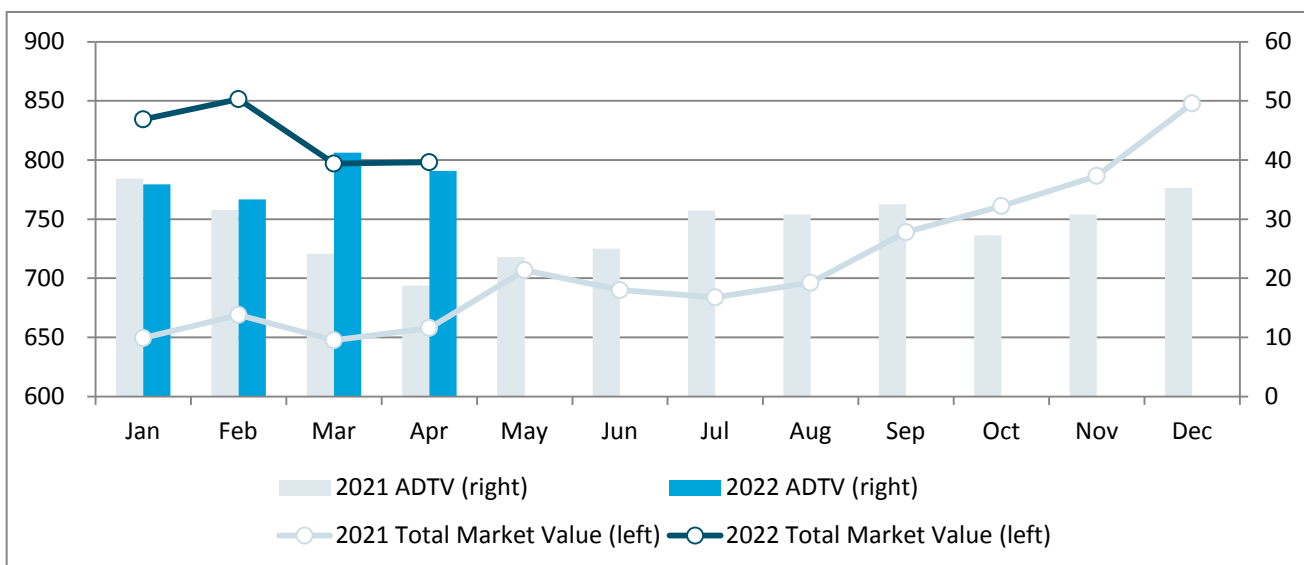


ETF Market

ETF Types	No. of ETFs	Free-float Market Value (RMB bn)	MoM Change	Average Daily Trading Value (RMB bn)	MoM Change
Equity ETF	347	640.25	-0.89%	25.47	1.97%
Bond ETF	11	20.57	18.21%	3.61	44.75%
Commodity ETF (gold)	8	12.42	-4.14%	1.04	-16.67%
Cross-Border ETF	41	114.99	1.73%	7.88	-36.30%
Publicly Offered Infrastructure REITs	7	9.89	29.98%	0.14	-9.81%
Total	414	798.11	0.14%	38.14	-7.52%

Note: Exchange-traded money market funds are not included

Monthly Total Market Value and Average Daily Trading Value (RMB bn)

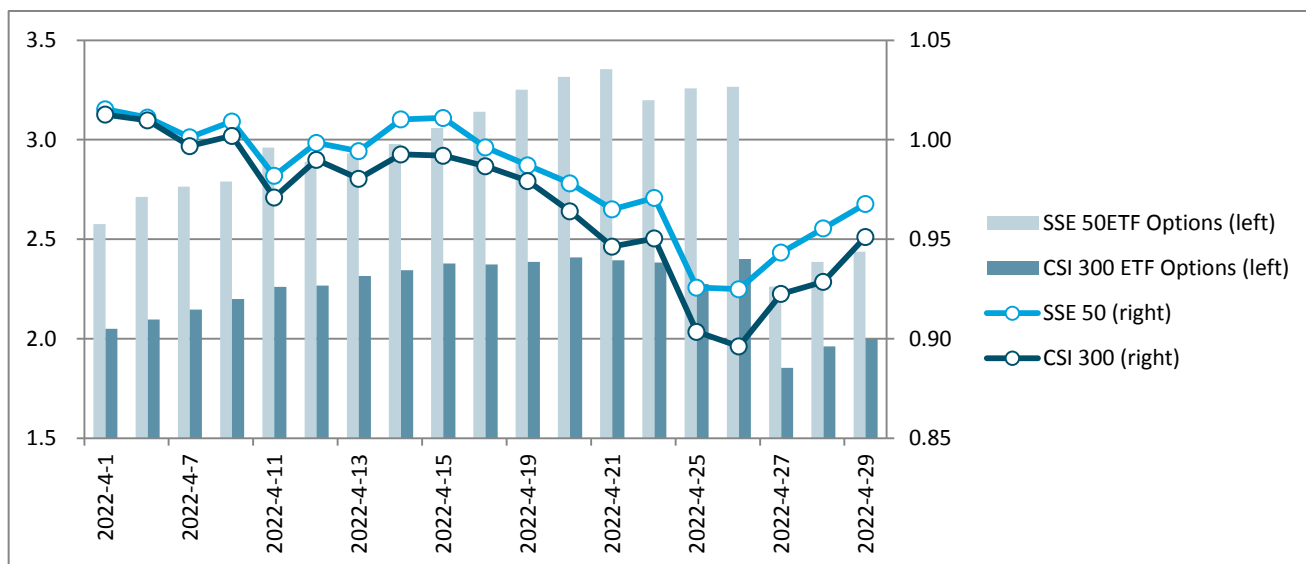


Note: Exchange-traded money market funds are not included

Derivatives Market

Options	Average Daily No. of Contracts Traded (mn)	MoM Change	No. of Call Options Contracts (mn)	MoM Change	No. of Put Options Contracts (mn)	MoM Change	Put/Call Ratio
SSE 50ETF Options	2.74	-8.95%	1.41	-8.71%	1.32	-9.20%	93.65%
CSI 300 ETF Options	2.33	-6.47%	1.11	-6.40%	1.21	-6.53%	108.68%

Daily No. of Options Contracts Traded (million) and Index Performance



Note: the indexes are rebased to March 31, 2021.

Newly Listed Companies

Code	Name	Industry	Market Cap. (RMB bn)
Main Board			
600938.SH	CNOOC Limited	Oil & Gas Exploration & Production	466.71
603191.SH	Chongqing Wangbian Electric (Group) Corp.,Ltd.	Electrical Components & Equipment	6.26
STAR Market			
688046.SH	GemPharmatech Co., Ltd.	Life Sciences Tools & Services	7.65
688048.SH	Suzhou Everbright Photonics Co., Ltd.	Semiconductors	9.95
688052.SH	Suzhou Novosense Microelectronics Co.,Ltd	Semiconductors	27.08
688072.SH	Piotech Inc.	Electronic Components	15.09
688125.SH	Guangdong Anda Automation Solutions Co.,Ltd.	Industrial Machinery	2.88
688153.SH	Vanchip(Tianjin) Technology Co.,Ltd.	Electronic Equipment & Instruments	19.13
688170.SH	Suzhou Delphi Laser Co., Ltd.	Electronic Equipment & Instruments	3.05
688209.SH	Shenzhen Injoinic Technology Co., Ltd.	Semiconductors	8.19
688279.SH	Fortior Technology(Shenzhen)Co., Ltd.	Semiconductors	5.32
688290.SH	Hangzhou Jingye Intelligent Technology Co., Ltd.	Industrial Machinery	2.61
688295.SH	Zhongfu Shenying Carbon Fiber Co.,Ltd.	Synthetic Fiber	28.71
688302.SH	Hinova Pharmaceuticals Inc.	Pharmaceuticals	2.99
688320.SH	Zhejiang He Chuan Technology Corporation Limited	Industrial Machinery	2.87
688325.SH	Guangdong Cellwise Microelectronics Co., Ltd.	Semiconductors	3.27

688326.SH	Beijing Jingwei Hirain Technologies Co., Inc.	Systems Software	11.17
688337.SH	Rigol Technologies Co.,Ltd.	Electronic Equipment & Instruments	5.43

Edited by LI Tianfang, Dept. of International Affairs, Shanghai Stock Exchange.