

SSE Newsletter

In this issue

- Monthly Highlights
- Market Updates
- Fund Raising
- Downloads
- Upcoming Event

Monthly Highlights

- [On April 29, the total number of listed companies on the SSE STAR Market reached 100.](#)
- [On April 30, CSRC adjusted threshold of domestic listing for innovative red-chip companies.](#)
- [On April 30, NDRC and CSRC announced to launch infrastructure REITs.](#)
- [On May 7, PBOC and SAFE removed QFII / RQFII investment quotas to promote further opening-up of China's financial market.](#)

Downloads

- [STAR Companies Release Annual Reports with Highlights](#)
- [Overall Analysis Report on 2019 Annual Reports of Companies Listed on SSE Main Board](#)

Upcoming Event

May 21

19:00-20:10(UTC+8)

Webinar: Highlights of China's New Securities Law

[\(registration link\)](#)

Market Updates

SSE Main Board

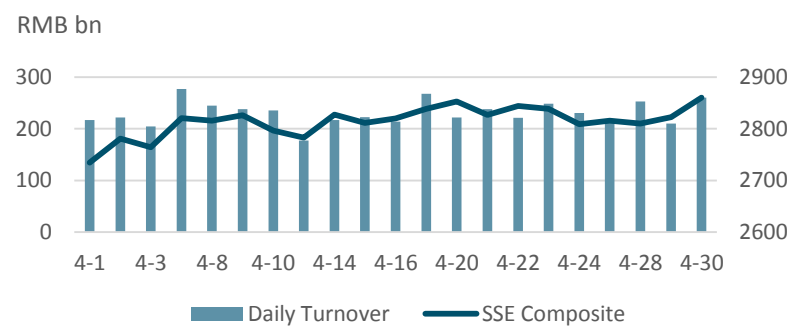
Note: Unless otherwise stated, all the following graphs use the color grey to represent 2019 and indigo to represent 2020.
Data Range: SSE Main Board A-share Companies

April at a Glance

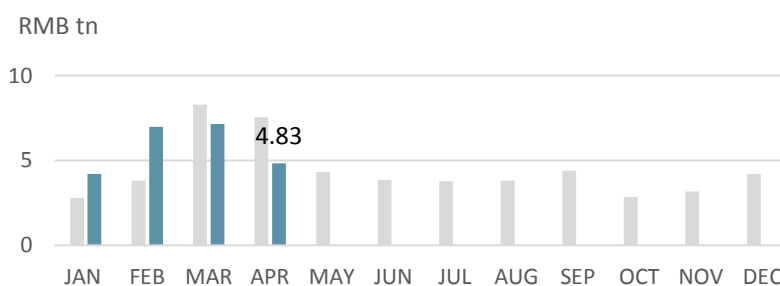
Index	Closing Price	Monthly Gain/Loss	P/E Ratio
SSE Composite	2860.08	3.99%	14.07
SSE 180	8326.52	5.23%	13.50
SSE 380	4768.42	4.96%	11.71
CSI 300	3912.58	6.14%	18.18

Note: as of Apr (2020/4/30)

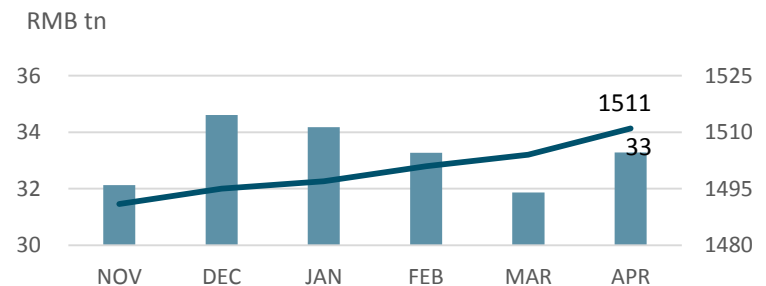
SSE Composite & Daily Turnover



Monthly Turnover



Market Cap. & No. of Listed Comps



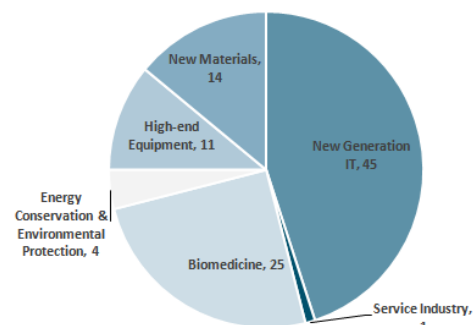
SSE STAR Market

Overview

Listed Companies	100
Market Cap	RMB 1389.56 billion
Turnover	RMB 235.02 billion
After-Hours Fixed-Price Trading	RMB 67 million

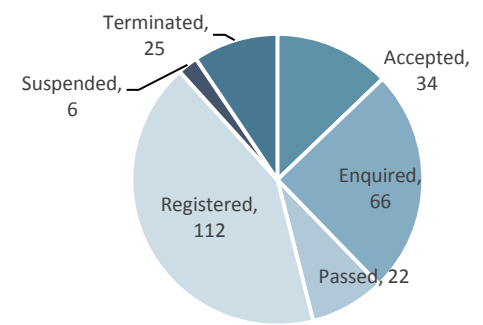
Note: as of Apr (2020/4/30)

Sectorial Distribution



Note: as of Apr (2020/4/30)

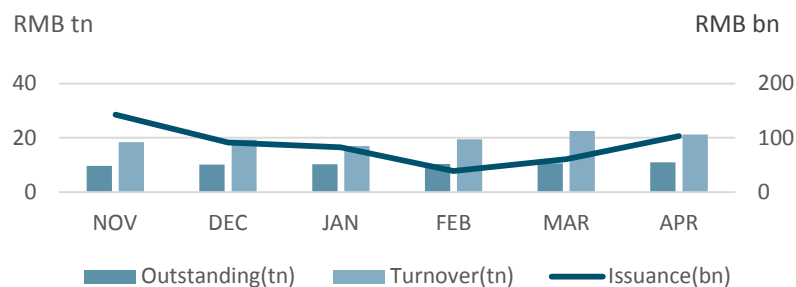
STAR Market Applications Update



Note: as of Apr (2020/4/30)

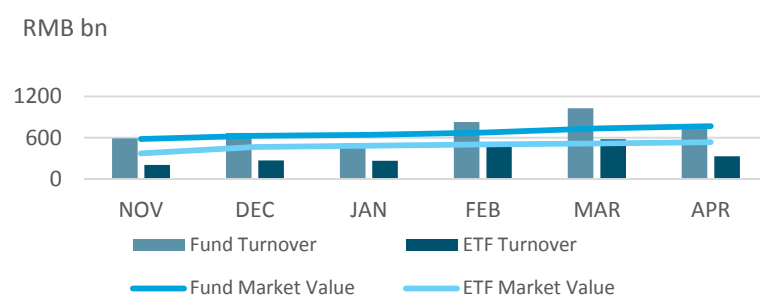
Bond Market

Monthly Turnover, Outstanding & Issuance



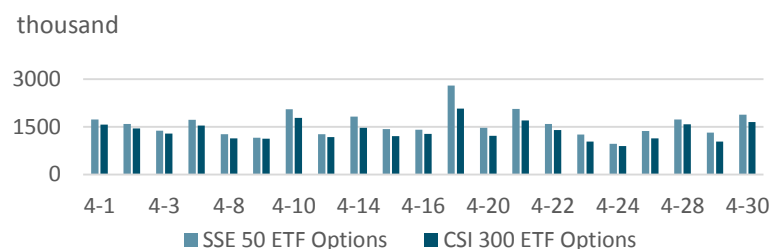
Fund Market

Monthly Turnover & Market Value



Derivatives Market

Daily No. of Contracts Traded



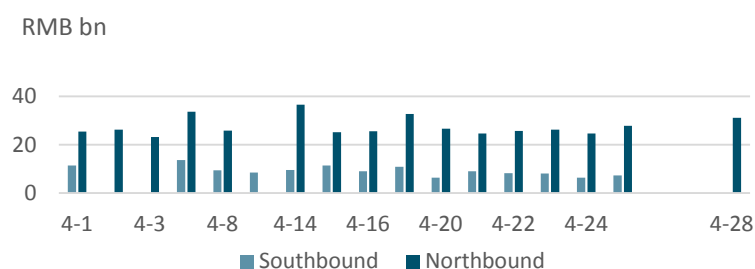
QFII/RQFII

Licenses Granted

	RQFII	QFII
Licenses Granted	227	296

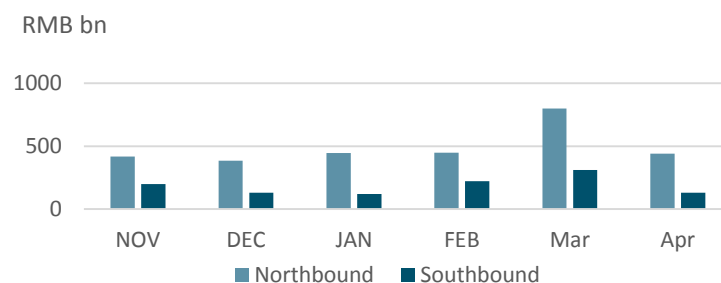
Shanghai-Hong Kong Stock Connect

Daily Turnover



Note: There is no trading data on some days due to holiday arrangement.

Monthly Turnover



Fund Raising

Listing

		No. of Securities	Fund Raising (RMB bn)
SSE Main Board	IPO	7	5.22
	Refinancing	76	76.35
SSE STAR Market	IPO	6	6.93
	Refinancing	0	0
Bond		362	378.27

Note: 2020/4/1~2020/4/30

Disclaimer

Shanghai Stock Exchange endeavors to ensure that the data and other material in this document are correct and complete, but does not accept liability for any error made or omission from this document. Shanghai Stock Exchange shall not be liable for any claims or losses of any nature, arising indirectly or directly from use of the data or material on this document. The reader of this document shall acknowledge and agree that all proprietary rights in the information received shall remain the property of Shanghai Stock Exchange. Reproduction, redistribution and transmission of any information contained in this document is strictly prohibited. Use of this document is confirmation that you have understood and accepted these terms.

Source: SSE, CSRC, SAFE, Wind

Should you have any queries, please feel free to contact sjwan@sse.com.cn or yhchen@sse.com.cn.

For more information, please visit <http://english.sse.com.cn/home/>.

