

SSE Newsletter

In this issue

- Monthly Highlights
- Market Updates
- Fund Raising
- Downloads

Downloads

- [Q & A on Launching Pilot Program of Creating Companies as Models for Information Disclosure](#)
- [Report on the Development of the Shanghai Stock Exchange Stock Options Market \(2019\)](#)

Monthly Highlights

- On January 3, the SSE publicly solicited opinions from the market on "Implementation Measures for Pilot Program of Creating Companies as Models for Information Disclosure Among Listed Companies on the Shanghai Stock Exchange (Draft)".
- On January 9, the SSE and JPX jointly held the ETF Connectivity briefing in Shanghai.

Market Updates

SSE Main Board

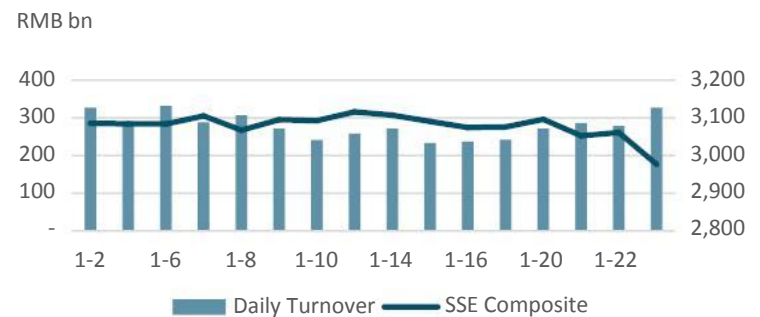
January at a Glance

Index	Closing Price	Monthly Gain/Loss	P/E Ratio
SSE Composite	2976.53	-2.41%	12.77
SSE 180	8577.70	-3.38%	10.50
SSE 380	4808.04	-0.18%	18.38
CSI 300	4003.9	-2.26%	12.15

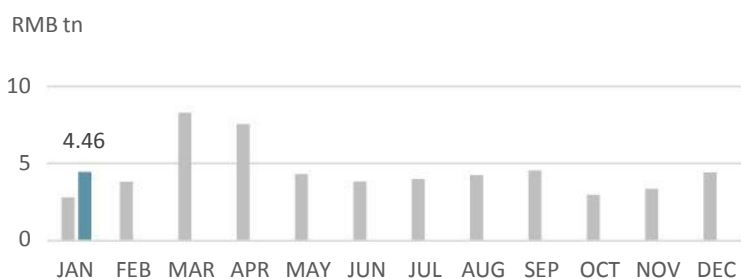
Note: as of Jan (2020/1/23)

Note: Unless otherwise stated, all the following graphs use the color grey to represent 2019 and indigo to represent 2020.

SSE Composite & Daily Turnover



Monthly Turnover



Market Cap. & No. of Listed Comps



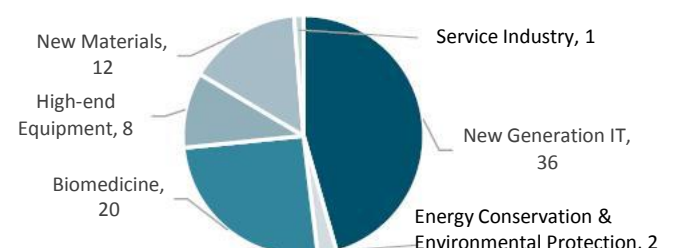
SSE STAR Market

Overview

Listed Companies	79
Market Cap	RMB 1.17 tn
Turnover	RMB 254.5 bn
After-Hours Fixed-Price Trading	RMB 103.24 mn

Note: as of Jan (2020/1/23)

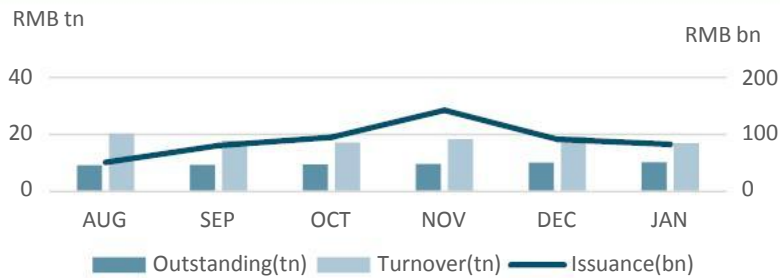
Sectorial Distribution



Note: as of Jan (2020/1/23)

Bond Market

Monthly Turnover, Outstanding & Issuance



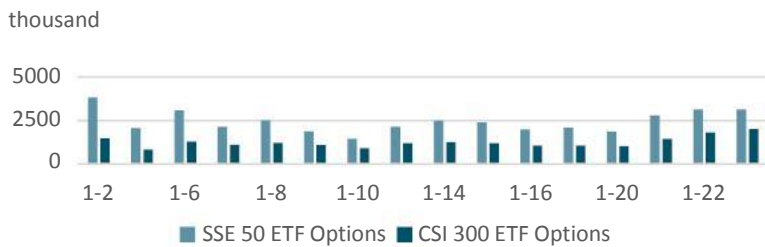
Fund Market

Monthly Turnover & Market Value



Derivatives Market

Daily No. of Contracts Traded



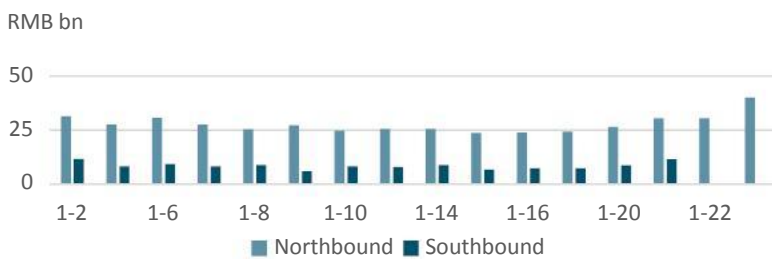
QFII/RQFII

Licenses Granted

	RQFII	QFII
Licenses Granted	223	293

Shanghai-Hong Kong Stock Connect

Daily Turnover



Note: There is no trading data on some days due to holiday arrangements.

Monthly Turnover



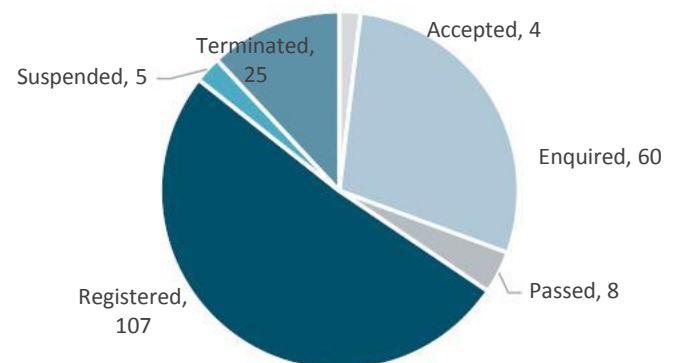
Fund Raising

Listing

		No. of Securities	Fund Raising (RMB bn)
SSE Main Board	IPO	2	31.3
	Refinancing	89	19.7
SSE STAR Market	IPO	9	8.04
	Refinancing	0	0
Bond		88	182

Note: 2020/1/2~2020/1/23

STAR Market Applications Update



Note: as of Jan (2020/1/23)

Disclaimer

Shanghai Stock Exchange endeavors to ensure that the data and other material in this document are correct and complete, but does not accept liability for any error made or omission from this document. Shanghai Stock Exchange shall not be liable for any claims or losses of any nature, arising indirectly or directly from use of the data or material on this document. The reader of this document shall acknowledge and agree that all proprietary rights in the information received shall remain the property of Shanghai Stock Exchange. Reproduction, redistribution and transmission of any information contained in this document is strictly prohibited. Use of this document is confirmation that you have understood and accepted these terms.

Source: SSE, CSRC, SAFE, Wind

Should you have any queries, please feel free to contact rsfang@sse.com.cn or yhchen@sse.com.cn.

For more information, please visit <http://english.sse.com.cn/overseasinvestors/introduction/briefintro/>.