

# SSE Newsletter

## In this issue

- Monthly Highlights
- Market Updates
- Fund Raising
- Downloads

## Monthly Highlights

- On March 16, China Coal Energy Co., Ltd. issued the first corporate bond on the SSE under the registration-based system.  
(<http://english.sse.com.cn/news/newsrelease/c/5014367.shtml>)
- On March 18, the SSE launched live-streaming lectures on qualification for board secretaries of companies listed on SSE STAR Market.  
(<http://english.sse.com.cn/news/newsrelease/c/5018931.shtml>)
- On March 27, the SSE released [Notice on Issuing "Interim Provisions on Application and Recommendation of Enterprises for Issuance and Listing on SSE STAR Market"](#).

## Downloads

- [2019 Annual Report of the SSE Bond Market](#)
- [Notice on SSE Business Arrangements for Implementing Registration-based System for Public Issuance of Corporate Bonds](#)

## Market Updates

### SSE Main Board

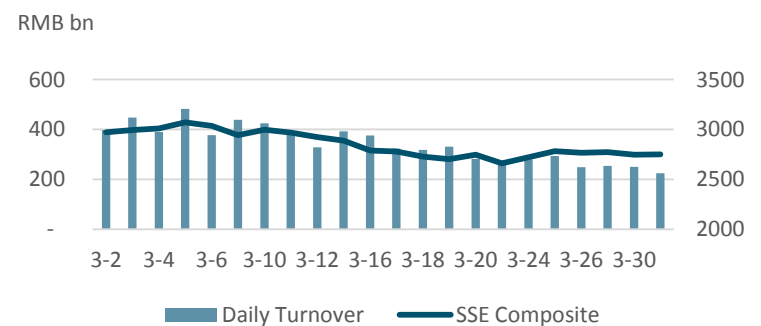
#### March at a Glance

Index	Closing Price	Monthly Gain/Loss	P/E Ratio
SSE Composite	2750.30	-4.51%	11.70
SSE 180	7912.58	-4.93%	9.48
SSE 380	4543.02	-4.49%	17.32
CSI 300	3686.16	-6.44%	11.00

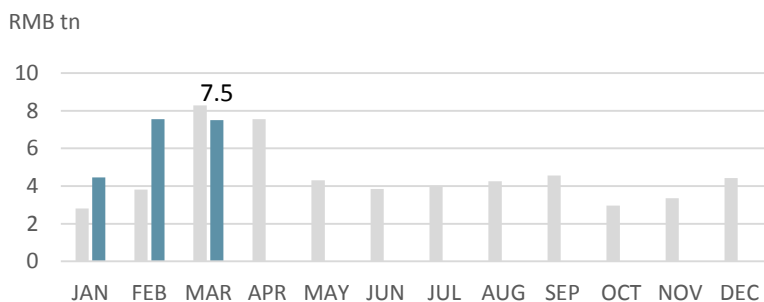
Note: as of Mar (2020/3/31)

Note: Unless otherwise stated, all the following graphs use the color grey to represent 2019 and indigo to represent 2020.

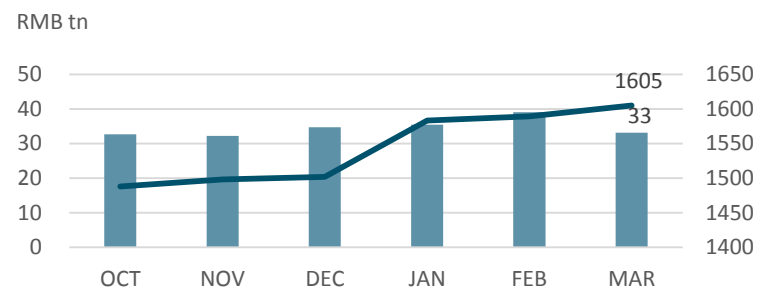
### SSE Composite & Daily Turnover



### Monthly Turnover



### Market Cap. & No. of Listed Comps



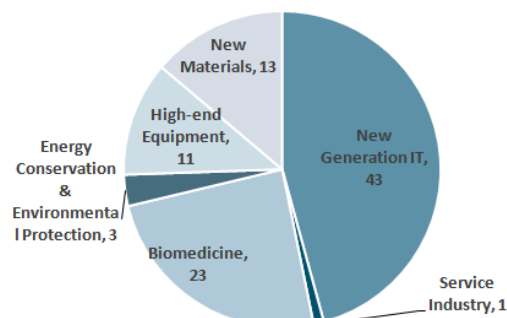
## SSE STAR Market

### Overview

Listed Companies	94
Market Cap	RMB 1.15 tn
Turnover	RMB 355.63 bn
After-Hours Fixed-Price Trading	RMB 96.51 mn

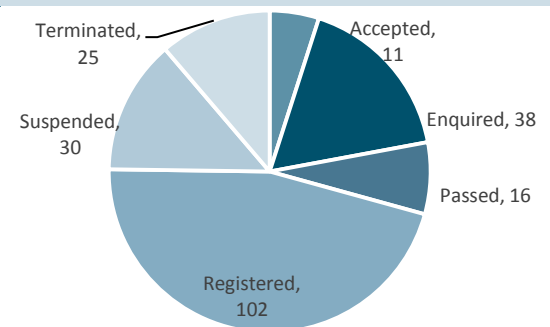
Note: as of Mar(2020/3/31)

### Sectorial Distribution



Note: as of Mar(2020/3/31)

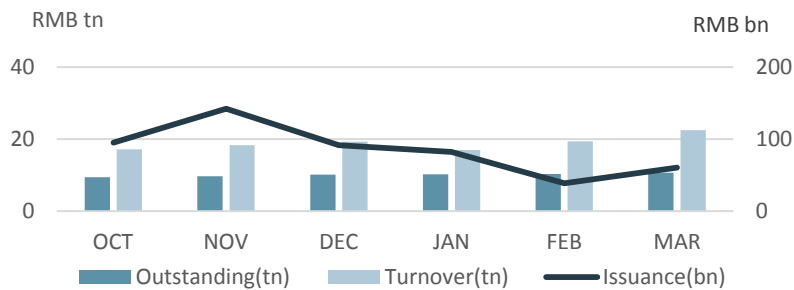
### STAR Market Applications Update



Note: as of Mar(2020/3/31)

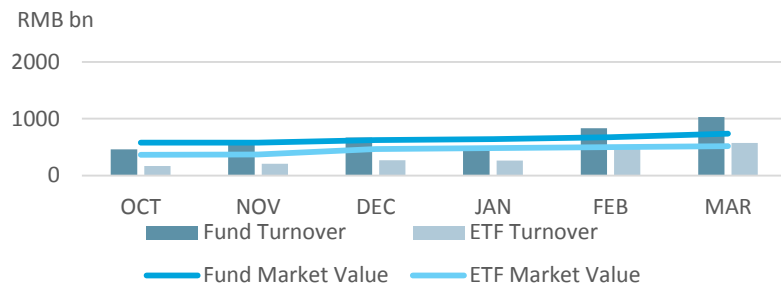
## Bond Market

### Monthly Turnover, Outstanding & Issuance



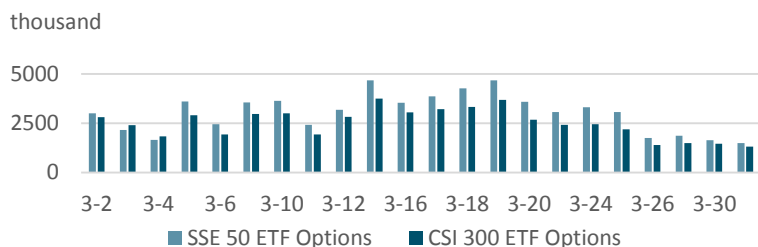
## Fund Market

### Monthly Turnover & Market Value



## Derivatives Market

### Daily No. of Contracts Traded



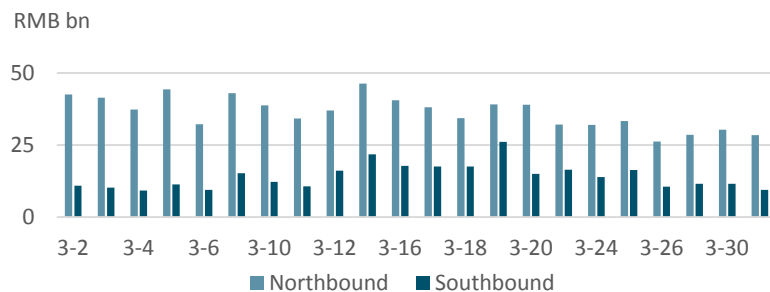
## QFII/RQFII

### Licenses Granted

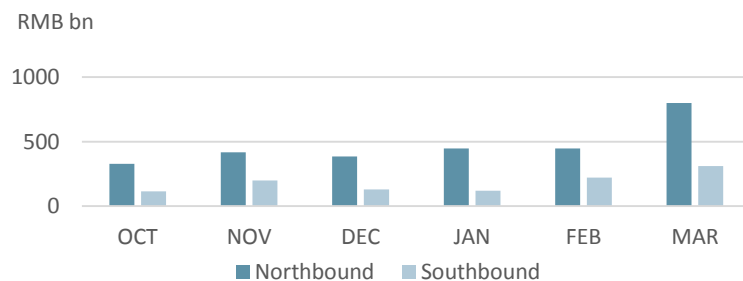
	RQFII	QFII
Licenses Granted	295	226

## Shanghai-Hong Kong Stock Connect

### Daily Turnover



### Monthly Turnover



## Fund Raising

### Listing

		No. of Securities	Fund Raising (RMB bn)
SSE Main Board	IPO	3	1.82
	Refinancing	76	44.69
SSE STAR Market	IPO	3	3.2
	Refinancing	0	0
Bond		406	436.8

Note: 2020/3/1~2020/3/31

## Disclaimer

Shanghai Stock Exchange endeavors to ensure that the data and other material in this document are correct and complete, but does not accept liability for any error made or omission from this document. Shanghai Stock Exchange shall not be liable for any claims or losses of any nature, arising indirectly or directly from use of the data or material on this document. The reader of this document shall acknowledge and agree that all proprietary rights in the information received shall remain the property of Shanghai Stock Exchange. Reproduction, redistribution and transmission of any information contained in this document is strictly prohibited. Use of this document is confirmation that you have understood and accepted these terms.

Source: SSE, CSRC, SAFE, Wind

Should you have any queries, please feel free to contact [rsfang@sse.com.cn](mailto:rsfang@sse.com.cn) or [yhchen@sse.com.cn](mailto:yhchen@sse.com.cn).

For more information, please visit <http://english.sse.com.cn/overseasinvestors/introduction/briefintro/>.

