

# SSE Newsletter

## In this issue

- Monthly Highlights
- Market Updates
- Fund Raising
- Upcoming Event
- Downloads

## Monthly Highlights

- On November 8, the CSRC announced to officially launch the work of expanding the pilot coverage of stock options and stock index options.
- On November 8, the SSE sought comments on the supporting business rules for the refinancing on the SSE STAR Market. (<http://english.sse.com.cn/aboutsse/news/newsrelease/c/4949132.shtml>)
- The SSE new English website will be available on December 19. (<http://english2020.sse.com.cn/>)

## Downloads

- [Notice of Publicly Soliciting Opinions on “SSE Implementation Measures on Shanghai-Hong Kong Stock Connect Business \(2nd Amendment in 2019, Draft for Comment\)”](#)
- [Adhering to High-quality Development, SSE-listed Companies Perform Stably with Growth in Q3](#)

## Upcoming Event

Dec 12-13 Shanghai  
The SSE STAR Market Corporate Access Event for Global Investors

## Market Updates

### SSE Main Board

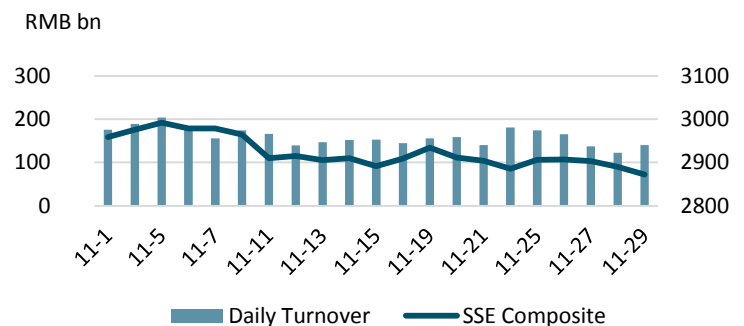
Note: Unless otherwise stated, all the following graphs use the color grey to represent 2018 and indigo to represent 2019.

#### November at a Glance

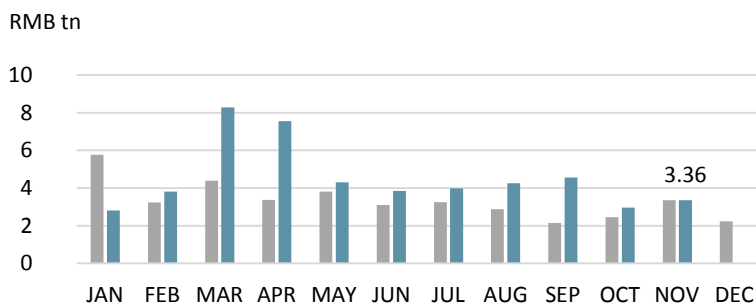
Index	Closing Price	Monthly Gain/Loss	P/E Ratio
SSE Composite	2871.98	-1.95%	12.51
SSE 180	8352.61	-1.67%	10.26
SSE 380	4501.53	-1.33%	17.82
CSI 300	3828.67	-1.49%	11.63

Note: as of Nov (2019/11/29)

#### SSE Composite & Daily Turnover



#### Monthly Turnover



#### Market Cap. & No. of Listed Comps



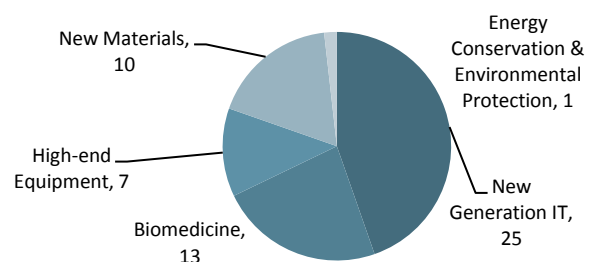
## SSE STAR Market

### Overview

Listed Companies	56
Market Cap	RMB 710 bn
Turnover	RMB 174.9 bn
After-Hours Fixed-Price Trading	RMB 100.59 mn

Note: as of Nov (2019/11/29)

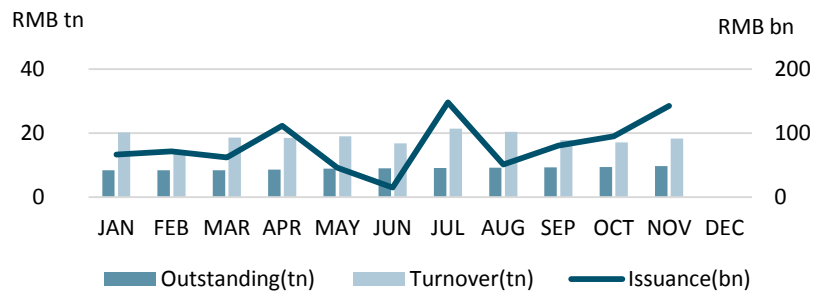
### Sectorial Distribution



Note: as of Nov (2019/11/29)

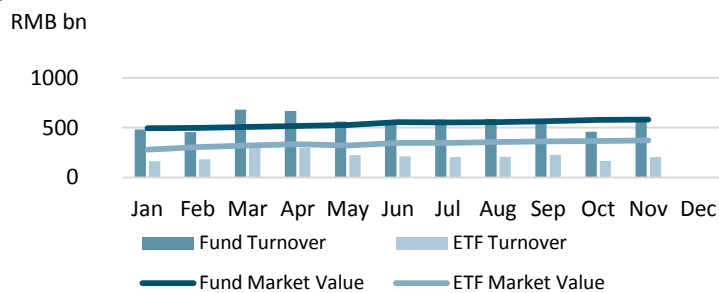
## Bond Market

### Monthly Turnover, Outstanding & Issuance



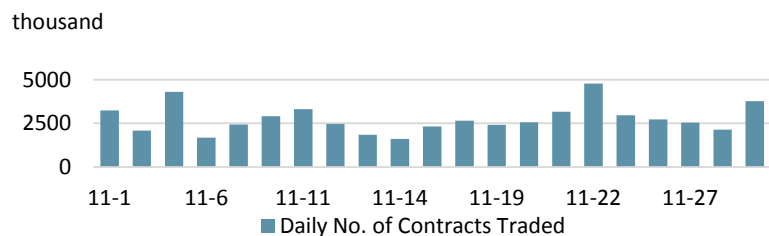
## Fund Market

### Monthly Turnover & Market Value



## Derivatives Market (SSE 50 ETF Options)

### Daily No. of Contracts Traded



## QFII/RQFII

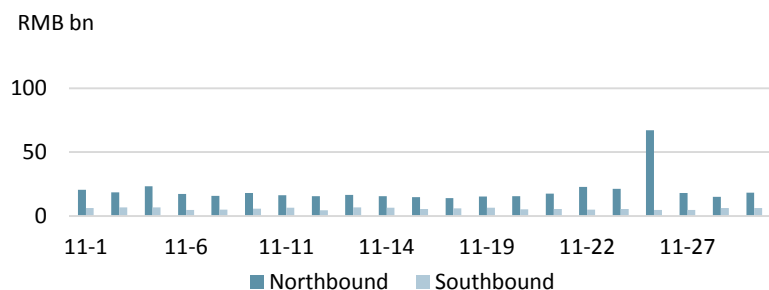
### Licenses Granted

	RQFII	QFII
Licenses Granted	222	292

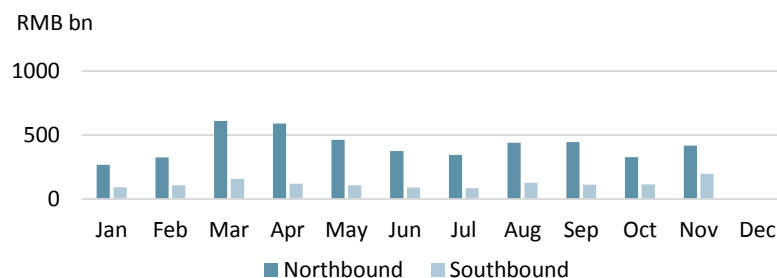
Note: On Sep 10, the SAFE announced to abolish restrictions on the investment quota of QFII/ RQFII

## Shanghai-Hong Kong Stock Connect

### Daily Turnover



### Monthly Turnover



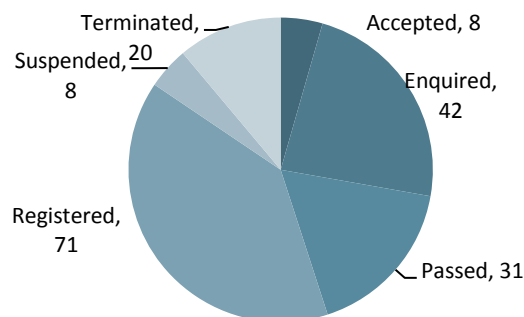
## Fund Raising

### Listing

		No. of Securities	Fund Raising (RMB bn)
SSE Main Board	IPO	3	14.8
	Refinancing	68	29.4
SSE STAR Market	IPO	16	19.3
	Refinancing	0	0
Bond		265	350.7

Note: 2019/11/01~2019/11/29

## STAR Market Applications Update



Note: as of Nov (2019/11/29)

## Disclaimer

Shanghai Stock Exchange endeavors to ensure that the data and other material in this document are correct and complete, but does not accept liability for any error made or omission from this document. Shanghai Stock Exchange shall not be liable for any claims or losses of any nature, arising indirectly or directly from use of the data or material on this document. The reader of this document shall acknowledge and agree that all proprietary rights in the information received shall remain the property of Shanghai Stock Exchange. Reproduction, redistribution and transmission of any information contained in this document is strictly prohibited. Use of this document is confirmation that you have understood and accepted these terms.

Source: SSE, CSRC, SAFE, Wind

Should you have any queries, please feel free to contact [rsfang@sse.com.cn](mailto:rsfang@sse.com.cn) or [yhchen@sse.com.cn](mailto:yhchen@sse.com.cn).

For more information, please visit <http://english.sse.com.cn/overseasinvestors/introduction/briefintro/>.