

# SSE Newsletter

## In this issue

- Monthly Highlights
- Market Updates
- Fund Raising
- Upcoming Events
- Downloads

## Monthly Highlights

- The SSE, the SZSE and the HKEX have reached a consensus on the conditions for Hong Kong listed companies' shares with weighted voting rights (WVR) to be included for the first time in southbound trading of the stock connect. The SSE and the SZSE have amended relevant business rules, and they have respectively started soliciting opinions from the market since August 2.

## Downloads

- [Q&A on Operation of SSE STAR Market in First Month of Trading](#)
- [SSE Reports on Recent Operation of Listed Companies](#)
- [Q&A on "SSE Rules for Review of Major Assets Reorganization of Listed Companies on SSE STAR Market \(Draft\)"](#)

## Upcoming Events

- |   |           |
|---|-----------|
| Sep 19  | Shanghai  |
| SSE Overseas Investor Management Master Class | Relations |

## Market Updates

### SSE Main Board

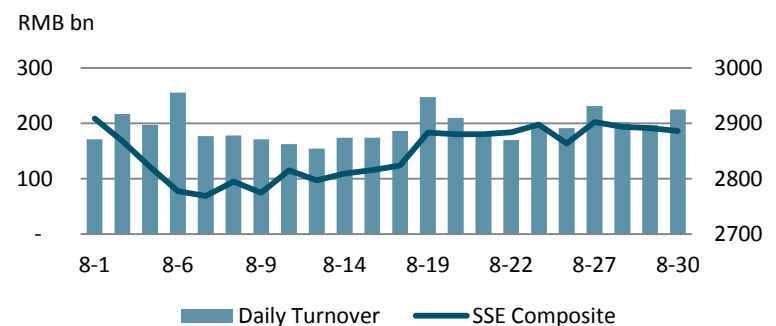
Note: Unless otherwise stated, all the following graphs use the color grey to represent 2018 and indigo to represent 2019.

#### August at a Glance

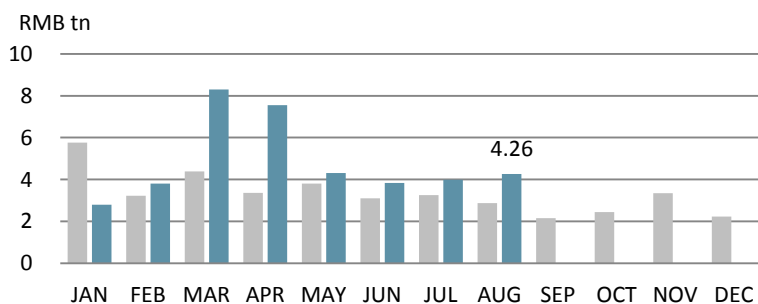
Index	Closing Price	Monthly Gain/Loss	P/E Ratio
SSE Composite	2886.24	-1.58%	12.64
SSE 180	8380.37	-1.36%	10.46
SSE 380	4549.79	-0.27%	17.21
CSI 300	3799.59	-0.93%	11.87

Note: as of Aug (2019/08/30)

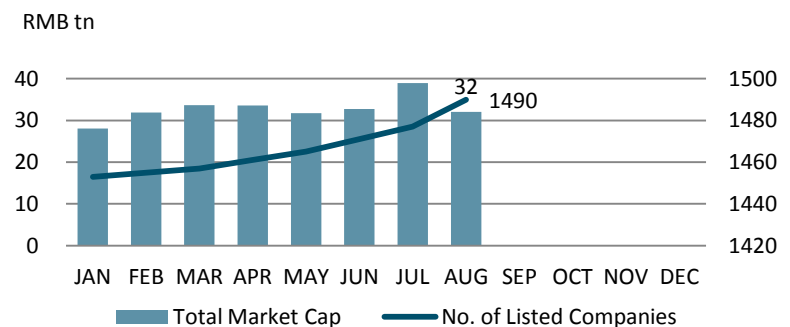
#### SSE Composite & Daily Turnover



#### Monthly Turnover



#### Market Cap. & No. of Listed Comps



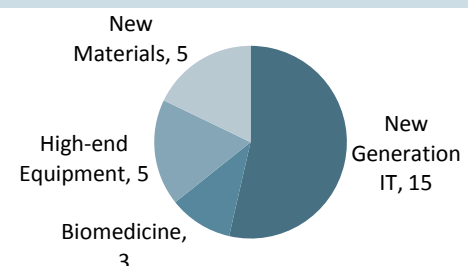
## SSE STAR Market

### Overview

Listed Companies	<b>28</b>
Market Cap	RMB <b>580</b> bn
Turnover	RMB <b>450</b> bn
After-Hours Fixed-Price Trading	RMB <b>970</b> mn

Note: as of Aug (2019/08/30)

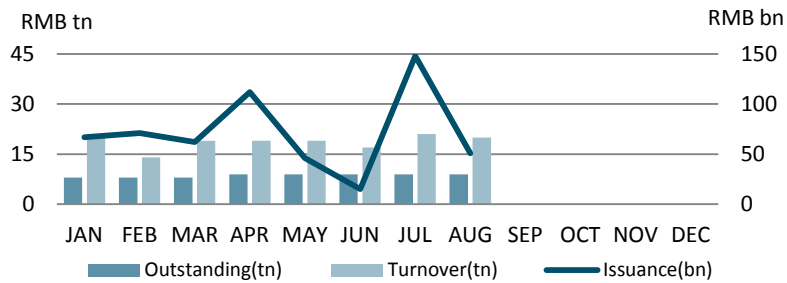
### Sectorial Distribution



Note: as of Aug (2019/08/30)

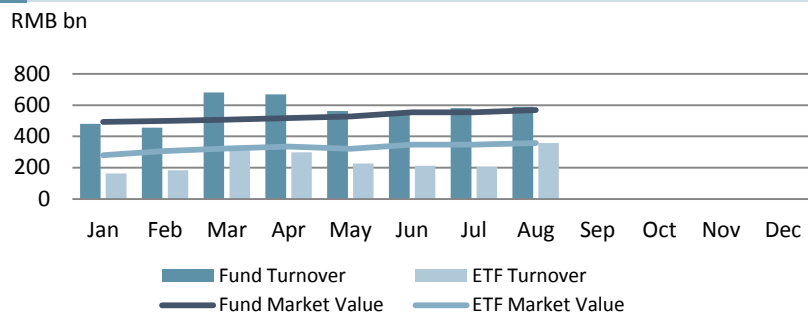
## Bond Market

### Monthly Turnover, Outstanding & Issuance



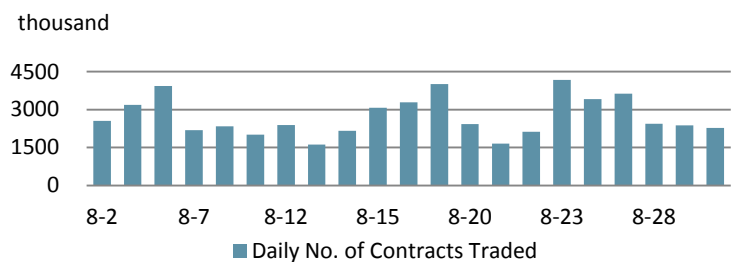
## Fund Market

### Monthly Turnover & Market Value



## Derivatives Market (SSE 50 ETF Options)

### Daily No. of Contracts Traded



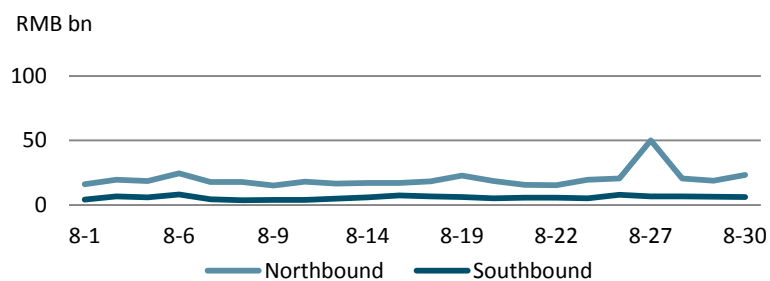
## QFII/RQFII

### Quota Approved & Licenses Granted

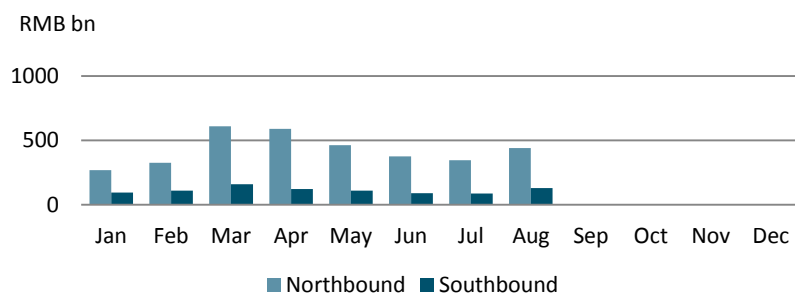
	RQFII	QFII
Quota Approved	RMB 693.3 bn	USD 111.38 bn
Licenses Granted	222	292

## Shanghai-Hong Kong Stock Connect

### Daily Turnover



### Monthly Turnover



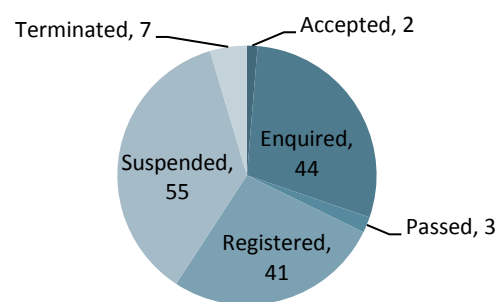
## Fund Raising

### Listing

		No. of Securities	Fund Raising (RMB bn)
SSE Main Board	IPO	8	3.8
	Refinancing	96	8.2
SSE STAR Market	IPO	3	4.3
	Refinancing	0	0
Bond		262	282.9

Note: 2019/07/29~2019/08/30

### STAR Market Applications Update



Note: as of Aug (2019/08/30)

## Disclaimer

Shanghai Stock Exchange endeavors to ensure that the data and other material in this document are correct and complete, but does not accept liability for any error made or omission from this document. Shanghai Stock Exchange shall not be liable for any claims or losses of any nature, arising indirectly or directly from use of the data or material on this document. The reader of this document shall acknowledge and agree that all proprietary rights in the information received shall remain the property of Shanghai Stock Exchange. Reproduction, redistribution and transmission of any information contained in this document is strictly prohibited. Use of this document is confirmation that you have understood and accepted these terms.

Source: SSE, CSRC, SAFE, Wind

Should you have any queries, please feel free to contact [rsfang@sse.com.cn](mailto:rsfang@sse.com.cn) or [yhchen@sse.com.cn](mailto:yhchen@sse.com.cn).

For more information, please visit <http://english.sse.com.cn/overseasinvestors/introduction/briefintro/>.

