



SSE Newsletter – May

Source: SSE, Wind, as of May 31, 2023.

Monthly News Highlights

SSE and SGX Sign Memorandum of Understanding on ETF Product Connectivity to Help Build New Development Pattern of China-ASEAN Capital Market Connectivity and Cooperation

24 May, 2023

<http://english.sse.com.cn/news/newsrelease/c/5721714.shtml>

CSRC and MAS Held the 7th Supervisory Roundtable

24 May, 2023

http://www.csrc.gov.cn/csrc_en/c102030/c7410512/content.shtml

China to Improve Policies on Cross-border Funds for Multinational Companies

19 May, 2023

<http://www.chinadaily.com.cn/a/202305/19/WS64676ca7a310b6054fad40ed.html>

CSRC Issues Rules to Regulate Overseas GDR Issuance by Listed Firms at Home

16 May, 2023

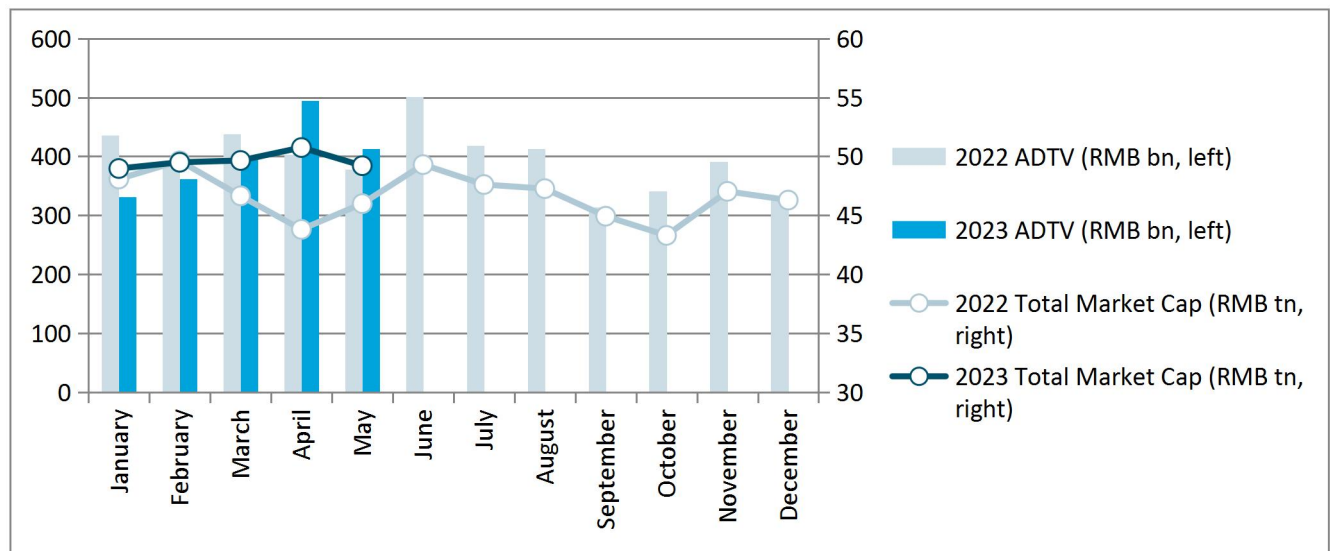
<http://www.csrc.gov.cn/csrc/c101932/c7408878/content.shtml> (in Chinese)

Equity Market

● Market Overview

Boards	No. Of Securities	Total Market Cap. (RMB tn)	PE (LYR)	Average Daily Trading Value (RMB bn)	Average Daily Trading Value MoM Change
Main Board A	1686	42.48	11.59	342.60	-10.43%
STAR Market	528	6.73	40.58	69.95	-37.42%
Total	2214	49.21	12.73	412.55	-16.54%

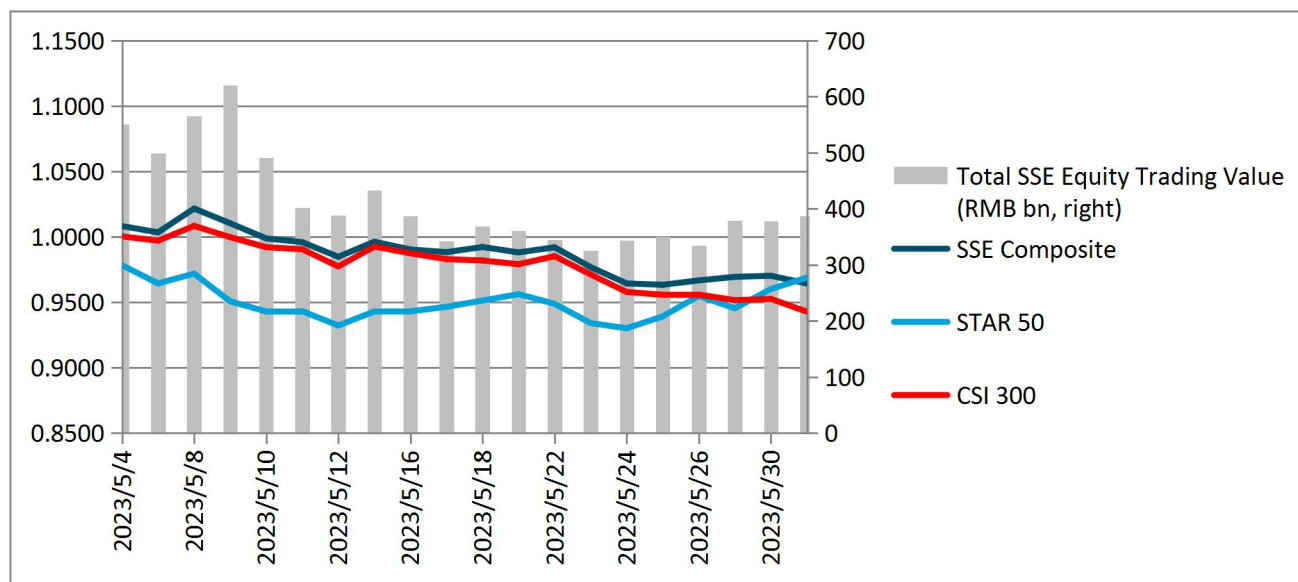
Shanghai A Shares (Main Board A & STAR Market) Market Cap & Trading Value



● Index Performance

Indexes	Closing Price	Monthly Performance	YTD Performance
SSE Composite	3204.5644	-3.57%	3.73%
SSE 50	2493.3496	-6.89%	-5.38%
SSE 180	8113.1534	-6.00%	-1.40%
STAR 50	1053.9095	-3.12%	9.79%
CSI 300	3798.5434	-5.72%	-1.89%

Index Performance & Equity Trading Value



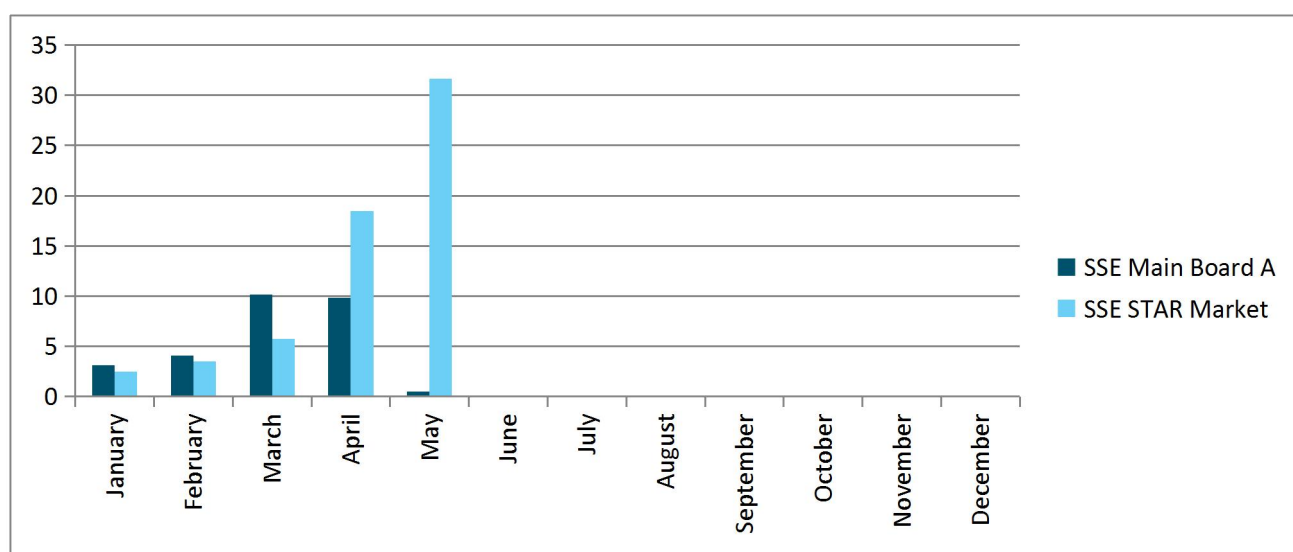
Note: the indexes are rebased to April 28, 2023.

● IPO

	Main Board A		STAR Market	
2023	No. of Newly Listed Companies	IPO Proceeds (RMB bn)	No. of Newly Listed Companies	IPO Proceeds (RMB bn)
January	2	3.12	3	2.46
February	3	4.07	3	3.49
March	9	10.15	3	5.75
April	6	9.84	9	18.47
May	1	0.49	9	31.66
Total	21	27.66	27	61.82

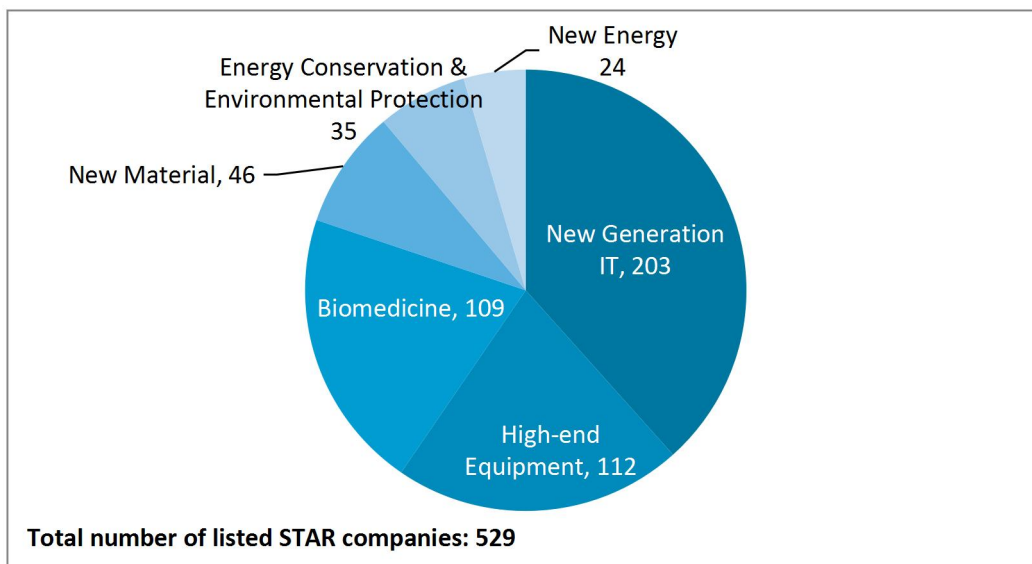
Note: a list of all the newly listed companies this month is available at the last page.

Monthly IPO Proceeds (RMB bn)

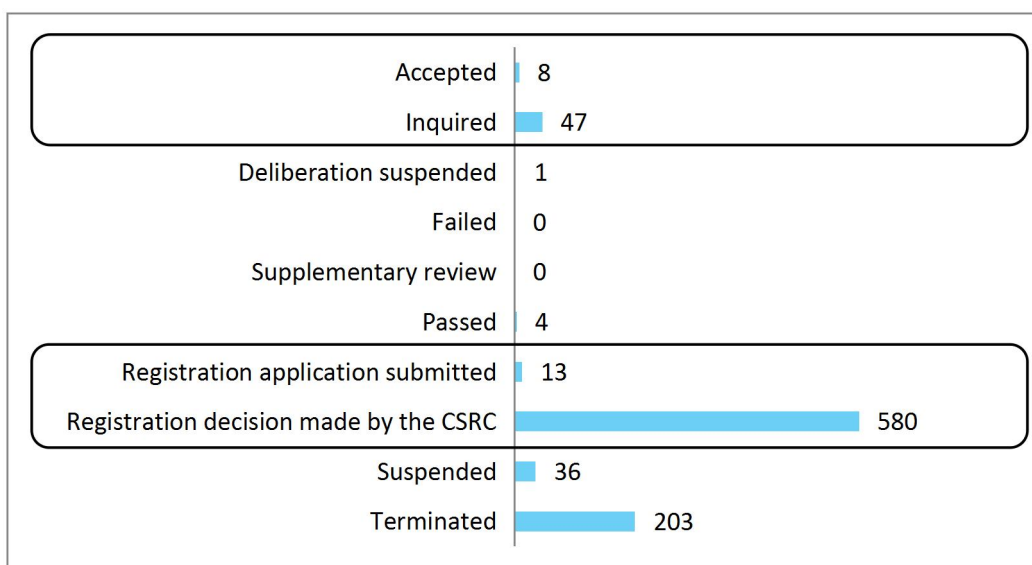


● STAR Market

STAR Market Sector Distribution (as of June 1)

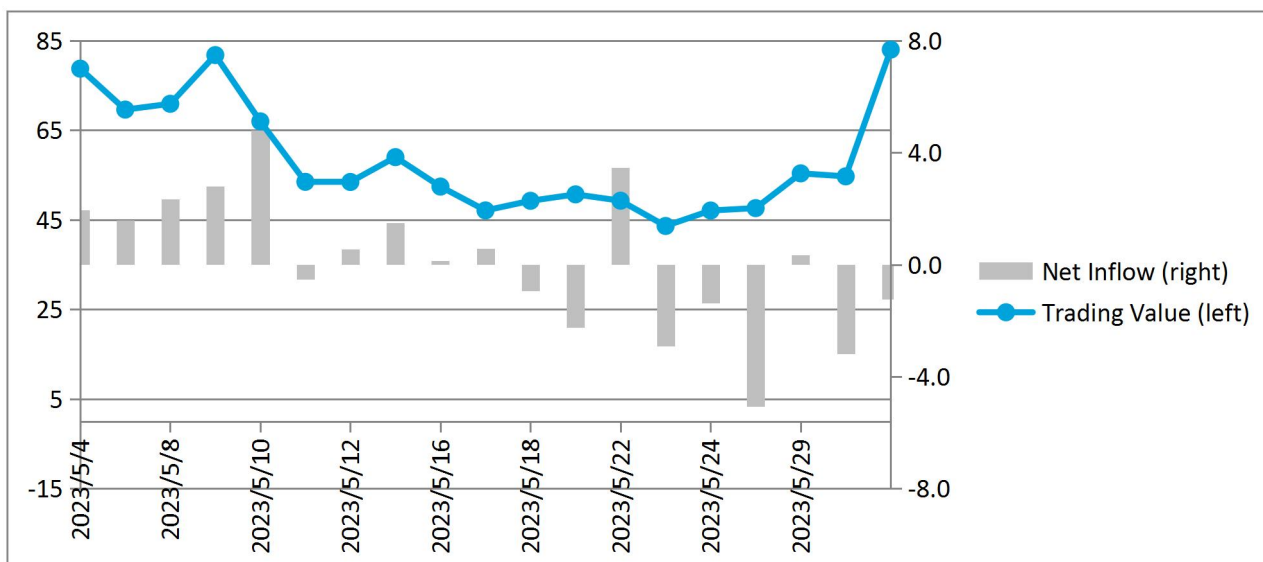


STAR Market IPO Pipeline (as of June 1)

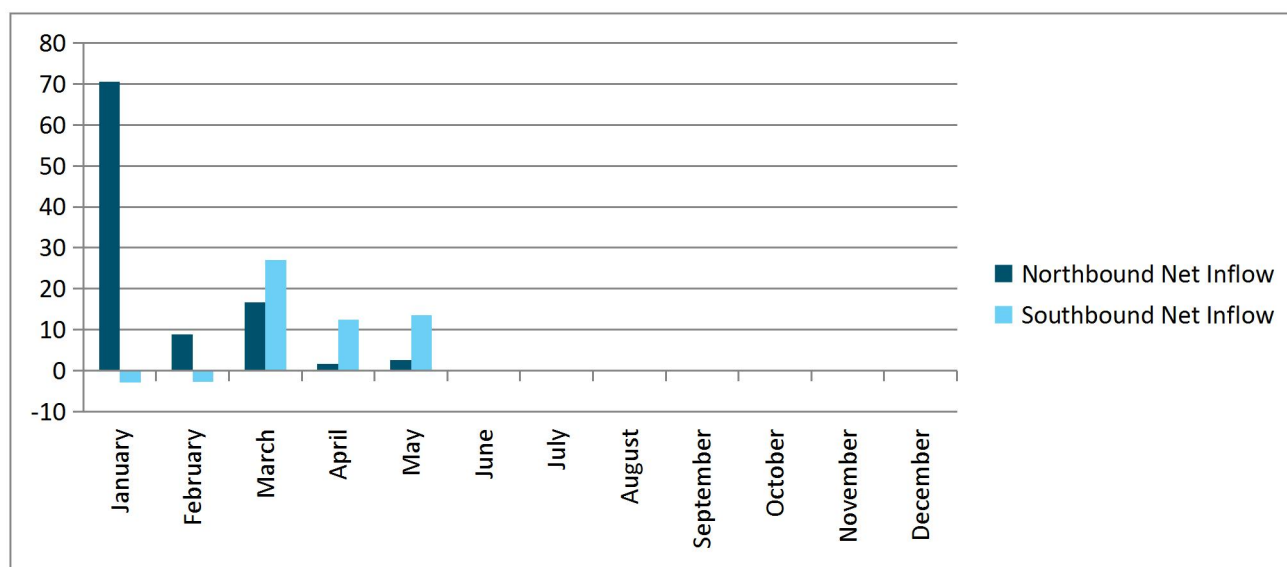


● Shanghai-Hong Kong Stock Connect

Daily Northbound Trading Value and Net Inflow (RMB bn)



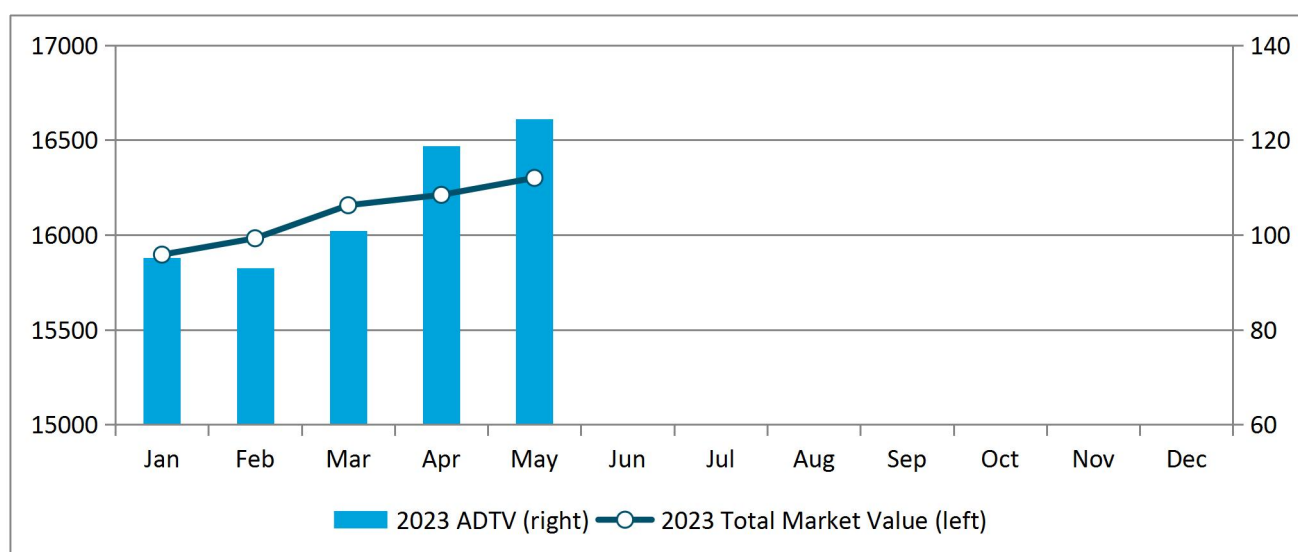
Monthly Northbound and Southbound Net Inflow (RMB bn)



Bond Market

Bond Types	Market Value (RMB bn)	MoM Change	Average Daily Trading Value (RMB bn)	MoM Change
Treasury bonds	870.25	0.16%	26.85	58.34%
Local government bonds	1181.48	-0.93%	1.19	58.50%
Financial bonds	106.28	0.07%	2.76	125.11%
Corporate bonds	11038.35	0.76%	66.78	-8.97%
Enterprise bonds	1004.72	1.18%	4.02	-1.99%
Convertible bonds	669.38	-0.99%	20.18	3.41%
Asset-backed securities	1429.39	0.77%	2.72	-4.04%
Total	16299.84	0.55%	124.50	4.85%

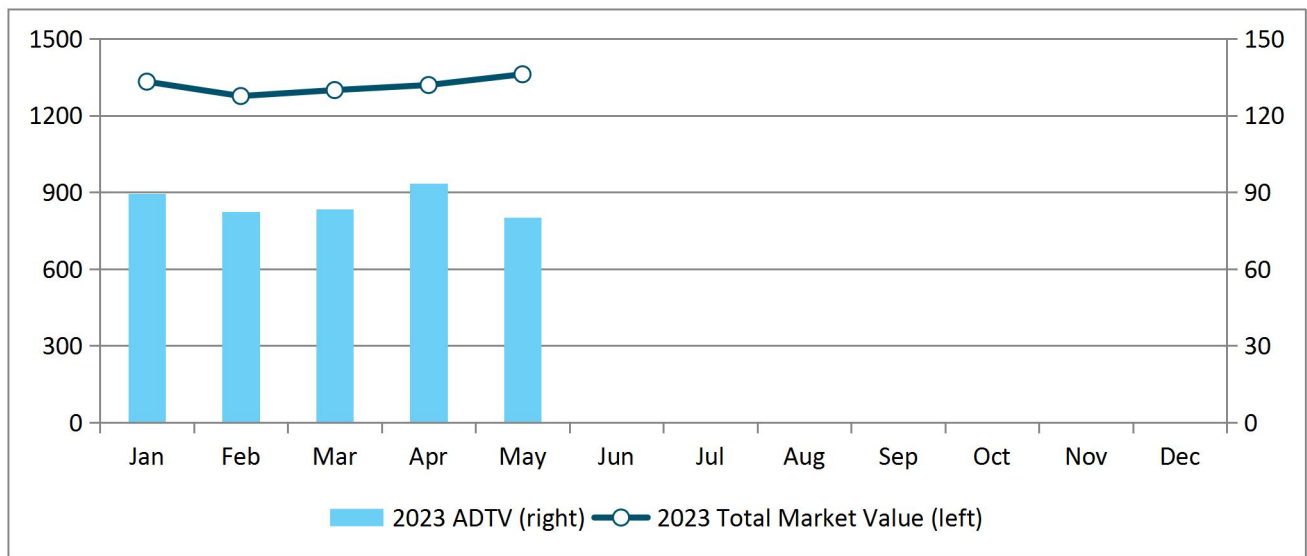
Monthly Total Market Value and Average Daily Trading Value (RMB bn)



ETF Market

ETF Types & REITs	No. of ETFs	Free-float Market Value (RMB bn)	MoM Change	Average Daily Trading Value (RMB bn)	MoM Change
Equity ETF	389	845.37	1.36%	30.48	-12.33%
Bond ETF	12	36.54	12.56%	12.01	-13.22%
Commodity ETF (gold)	8	11.84	-0.16%	0.84	-5.11%
Money Market ETF	24	287.40	12.36%	26.59	-17.25%
Cross-Border ETF	54	152.41	-2.17%	9.96	-13.63%
Publicly Offered Infrastructure REITs	18	27.60	-5.49%	0.18	-38.93%
Total	505	1361.16	3.19%	80.07	-14.33%

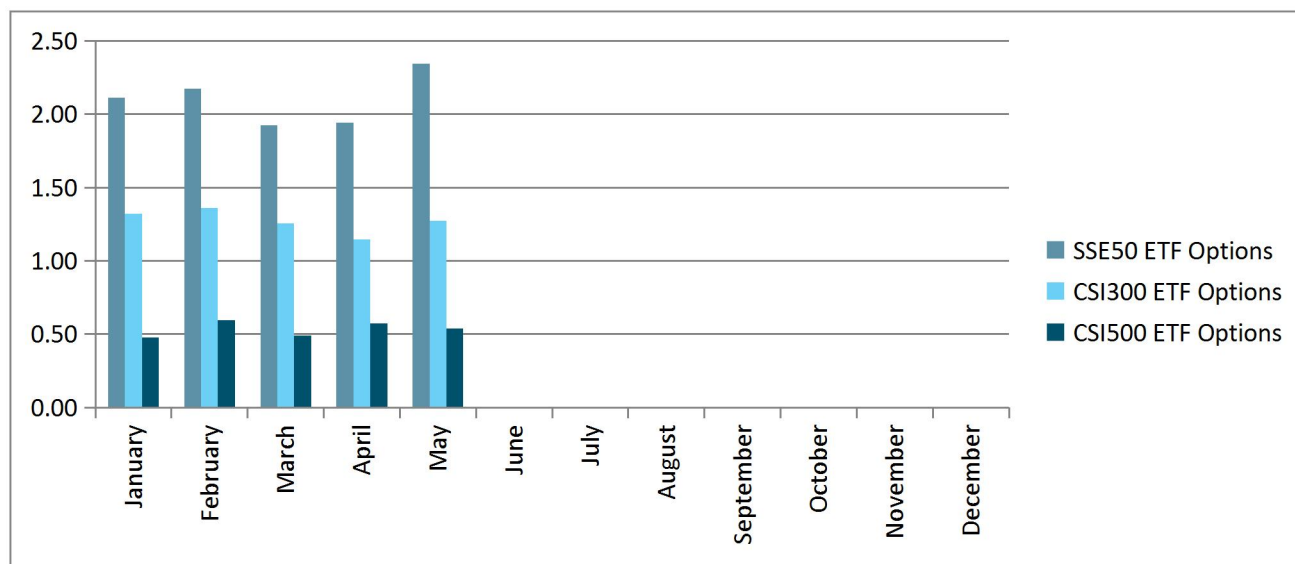
Monthly Total Market Value and Average Daily Trading Value (RMB bn)



Derivatives Market

Options	Average Daily No. of Contracts Traded (mn)	MoM Change	No. of Call Options Contracts (mn)	MoM Change	No. of Put Options Contracts (mn)	MoM Change	Put/Call Ratio
SSE 50ETF Options	2.35	20.76%	1.22	19.59%	1.13	22.05%	92.90%
CSI 300 ETF Options	1.28	11.10%	0.65	13.29%	0.62	8.87%	94.76%
CSI 500 ETF Options	0.54	-6.16%	0.25	-10.97%	0.28	-1.37%	111.12%

Monthly Average Daily No. of Contracts Traded (mn)



Newly Listed Companies

Code	Name	Industry	Market Cap. (RMB bn)	Listing Day Return
Main Board				
603172.SH	Zhejiang Wanfeng Chemical Co.,Ltd.	Specialty Chemicals	2.29	2023/5/10
STAR Market				
688562.SH	Beijing Shenzhou Aerospace Software Technology Co., Ltd.	Application Software	12.70	2023/5/24
688458.SH	Maxic Technology, Inc.	Semiconductors	6.50	2023/5/22
688361.SH	Skyverse Technology Co., Ltd.	Semiconductor Equipment	27.15	2023/5/19
688581.SH	Hangzhou Ags Medtech Co., Ltd.	Health Care Equipment	7.44	2023/5/19
688552.SH	Aerospace Nanhu Electronic Information Technology Co., Ltd	Aerospace & Defense	8.93	2023/5/18
688512.SH	Smarter Microelectronics(Guangzhou)Co., Ltd.	Communications Equipment	10.03	2023/5/16
688479.SH	Yonyou Auto Information Technology (Shanghai) Co., Ltd.	Application Software	4.17	2023/5/11
688469.SH	Semiconductor Manufacturing Electronics (Shaoxing) Corporation	Semiconductors	39.73	2023/5/10
688249.SH	Nexchip Semiconductor Corporation	Semiconductors	39.76	2023/5/5

Edited by CHEN Yinghui, and WAN Sijia, Dept. of International Affairs, Shanghai Stock Exchange.

Global Investor Services Team

Dept. of International Affairs

Shanghai Stock Exchange | 上海证券交易所

此文件仅发给指定收件人或机构。其内容可能包含某种享有法律特权或者需要保密的信息。对于任何未经本所明确书面授权而对本文件所载内容进行使用、披露、分发、变更之行为及由此产生的后果，本所概不承担任何责任。如您并非此文件的指定收件人或机构，请立即通知上海证券交易所，并立即销毁此文件。谢谢合作。

一旦您收悉此邮件（传真），即表示无条件同意并接受上述所载的免责声明，以及上海证交所所在无需给予任何理由或事先通知的情况下，可随时修改、更新、变更或增补本免责声明。

The information contained in this communication is intended solely for the use of the individual or entity to whom it is addressed. It may contain legally privileged or confidential information. The Shanghai Stock Exchange is not liable for any use, disclosure, distribution of or alteration to the contents of this information that has not been expressly authorized in writing by the Shanghai Stock Exchange. If you are not the intended recipient, please inform the Shanghai Stock Exchange of the error and delete the contents immediately. Thank you.

By receiving the email (fax), you expressly agree to the disclaimer above and that the Shanghai Stock Exchange may modify, update, revise or supplement the disclaimer at any time without giving any reason or prior notice.