

SSE Newsletter – December

Source: SSE, Wind, as of December 30, 2022.

Monthly News Highlights

CSRC Officials Answered Reporter Question regarding Progress in China-U.S. Audit Oversight Cooperation

16 Dec

http://www.csrc.gov.cn/csrc_en/c102030/c6913420/content.shtml

Securities Regulators in Mainland and Hong Kong Approve the Expanding Scope of Eligible Stocks under Stock Connect in Principle

19 Dec

News <http://english.sse.com.cn/news/newsrelease/c/5714478.shtml>

Q&A <http://english.sse.com.cn/news/newsrelease/c/5714477.shtml>

SSE Launched the 4th Generation Trading Supervision System

20 Dec

<http://english.sse.com.cn/news/newsrelease/c/5714432.shtml>

The First China-South Korea Co-Compiled Index Product "China-South Korea Semiconductor ETF" is Launched on SSE

22 Dec

<http://english.sse.com.cn/news/newsrelease/c/5714781.shtml>

SSE Further Expands Fee Reduction Scope to Boost Economy off to a "Stable Start"

23 Dec

<http://english.sse.com.cn/news/newsrelease/c/5714433.shtml>

SSE Launches New Offering, Underwriting and Offline IPO System

30 Dec

<http://english.sse.com.cn/news/newsrelease/c/5714897.shtml>

SSE Issues Four Rules on Asset-backed Securities Business

30 Dec

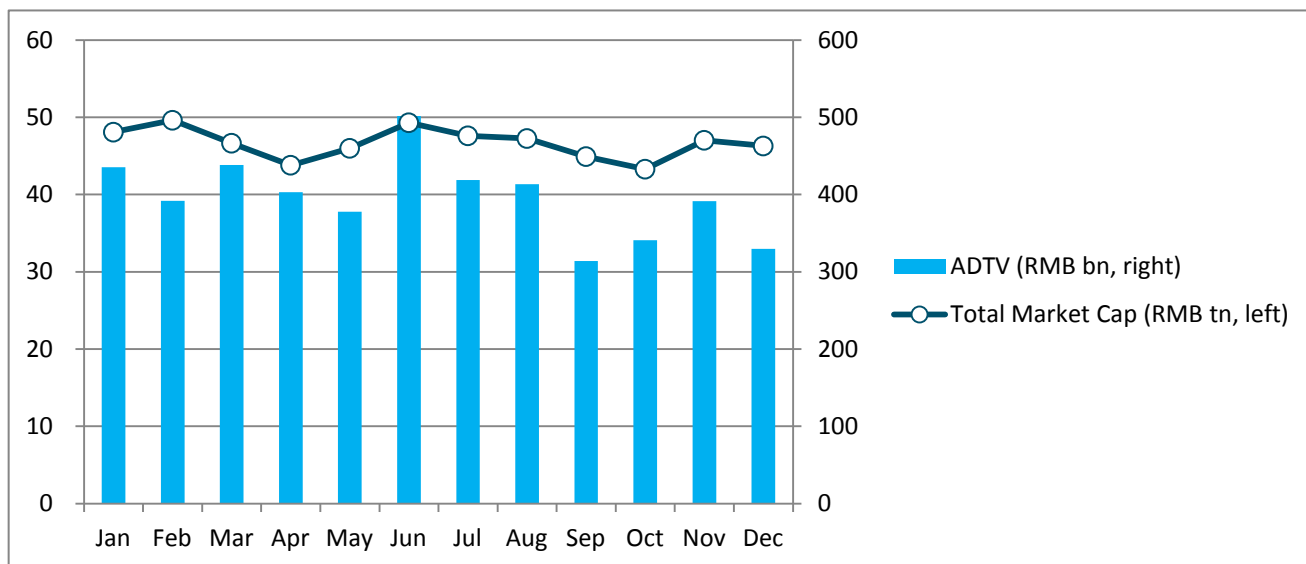
<http://english.sse.com.cn/news/newsrelease/c/5714896.shtml>

Equity Market

● Market Overview

Boards	No. of Listed Companies	Total Market Cap. (RMB tn)	PE (LYR)	Average Daily Trading Value (RMB bn)	Average Daily Trading Value MoM Change
Main Board A	1668	40.47	11.67	283.13	-13.57%
STAR Market	501	5.82	44.24	46.54	-27.28%

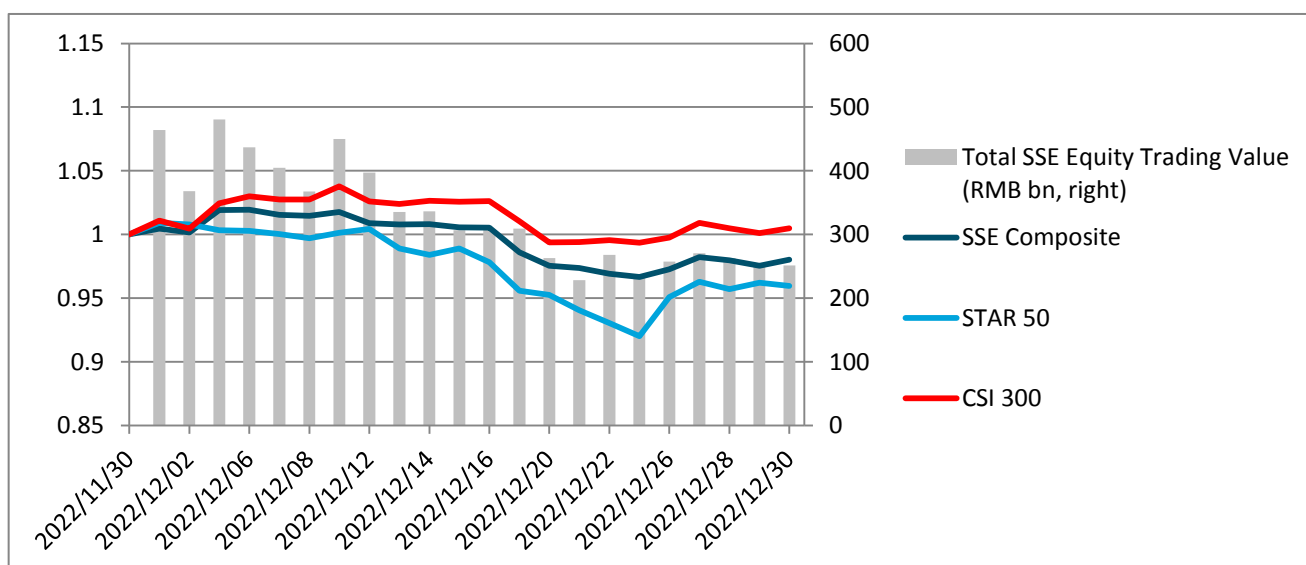
Shanghai A Shares (Main Board A & STAR Market) Market Cap & Trading Value



● Index Performance

Indexes	Closing Price	Monthly Performance	YTD Performance
SSE Composite	3089.26	-1.97%	-15.13%
SSE 50	2635.25	1.10%	-19.52%
SSE 180	8228.68	-0.42%	-18.77%
STAR 50	959.90	-4.03%	-31.35%
CSI 300	3871.63	0.48%	-21.63%

Index Performance & Equity Trading Value



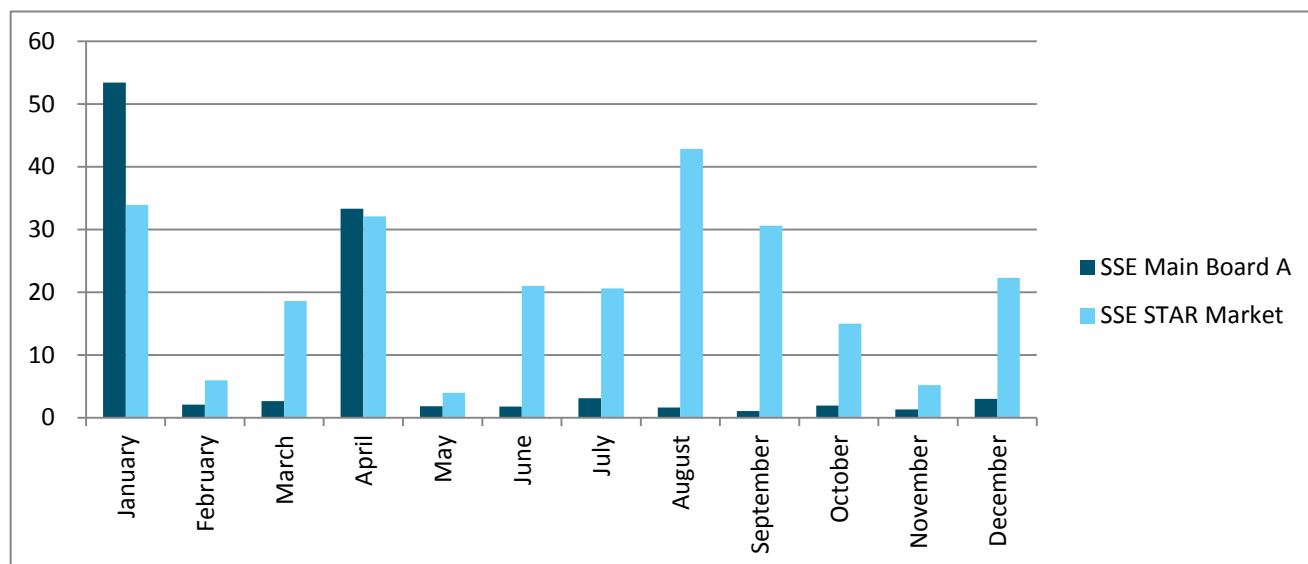
Note: the indexes are rebased to November 30, 2022.

● IPO

2022	Main Board A		STAR Market	
	No. of Newly Listed Companies	IPO Proceeds (RMB bn)	No. of Newly Listed Companies	IPO Proceeds (RMB bn)
January	3	53.37	10	33.93
February	3	2.06	4	5.97
March	4	2.61	13	18.62
April	2	33.28	16	32.09
May	3	1.80	4	3.94
June	1	1.75	7	21.01
July	4	3.07	11	20.59
August	2	1.59	17	42.85
September	2	1.07	14	31.23
October	3	1.90	10	14.97
November	2	1.33	5	5.18
December	2	3.01	13	22.29
Total	31	106.84	124	252.05

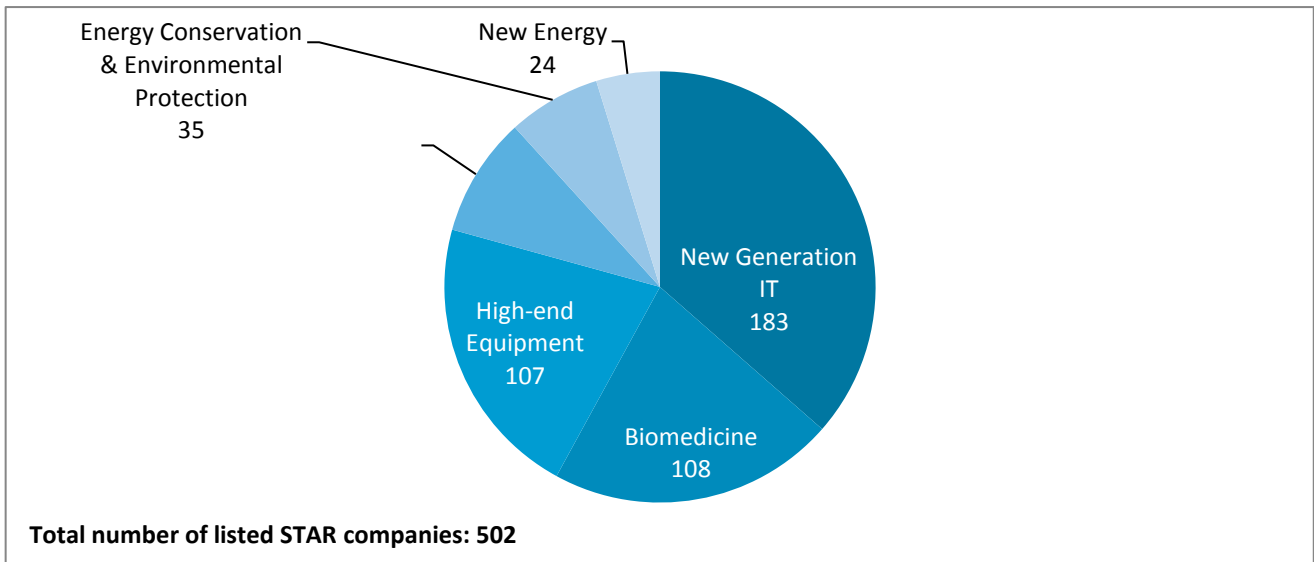
Note: a list of all the newly listed companies this month is available at the last page.

Monthly IPO Proceeds (RMB bn)

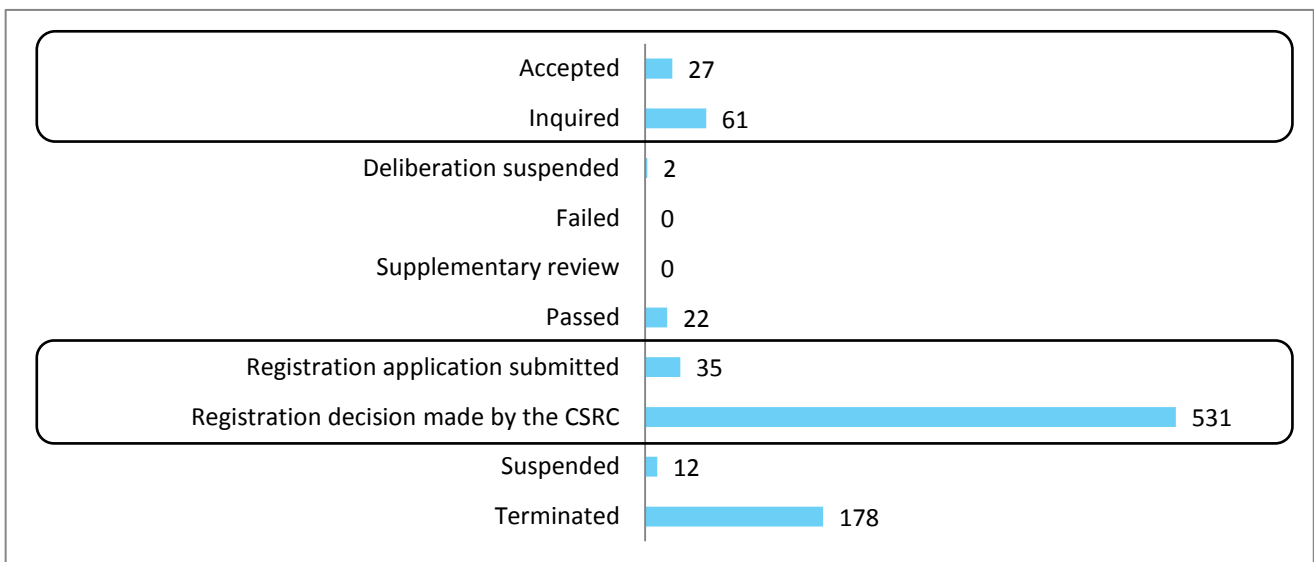


● **STAR Market**

STAR Market Sector Distribution (as of January 11, 2023)

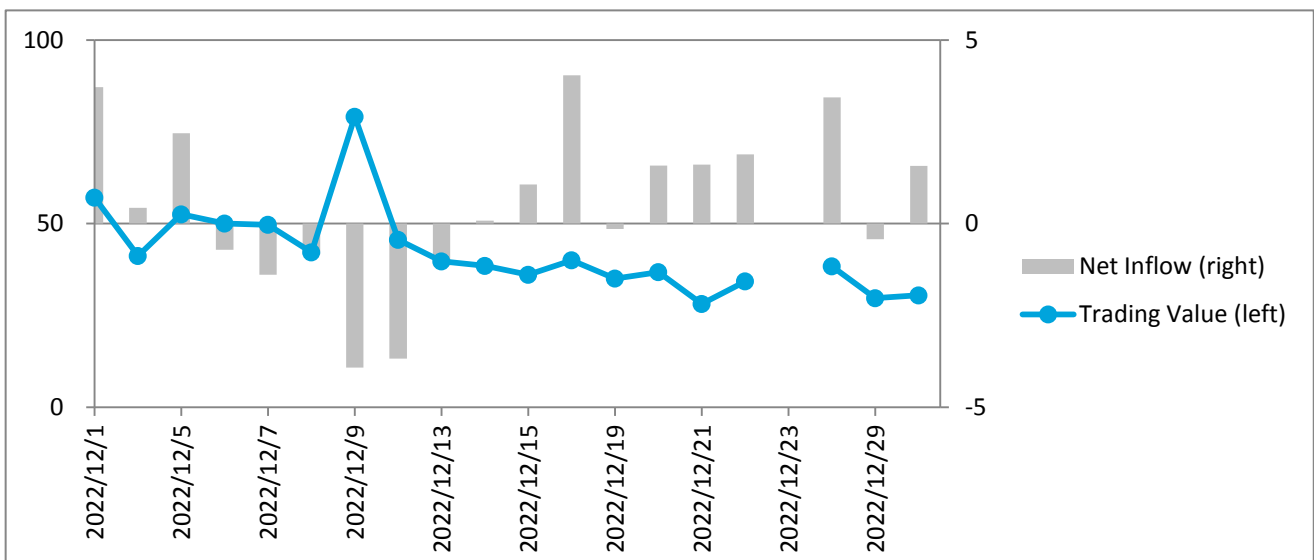


STAR Market IPO Pipeline (as of January 11, 2023)

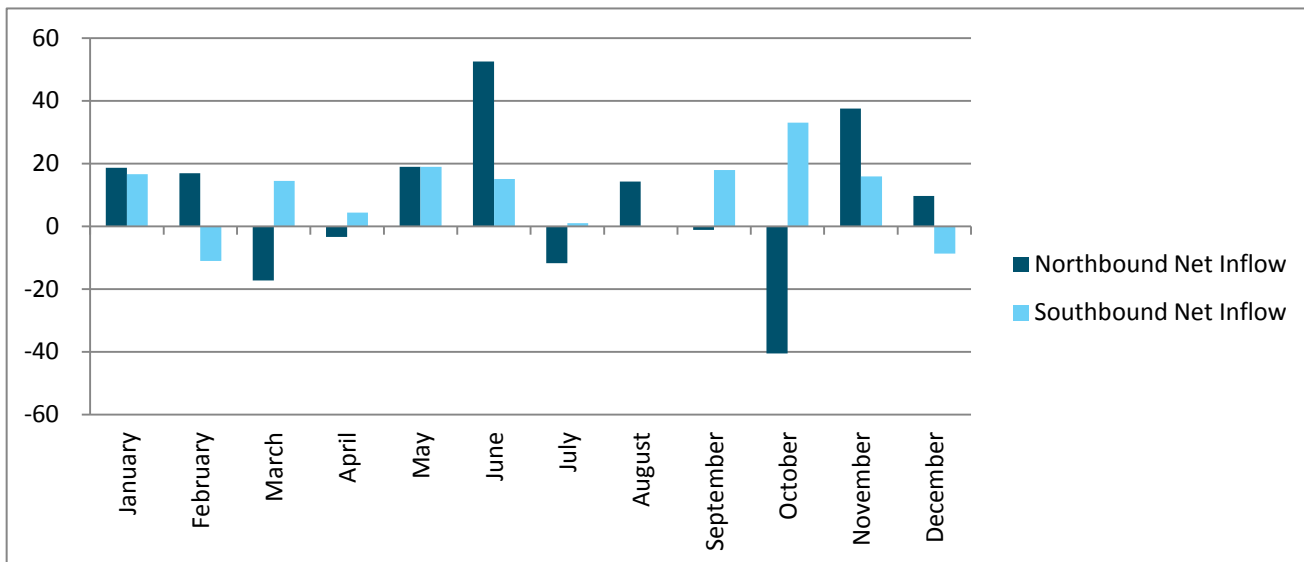


● **Shanghai-Hong Kong Stock Connect**

Daily Northbound Trading Value and Net Inflow (RMB bn)



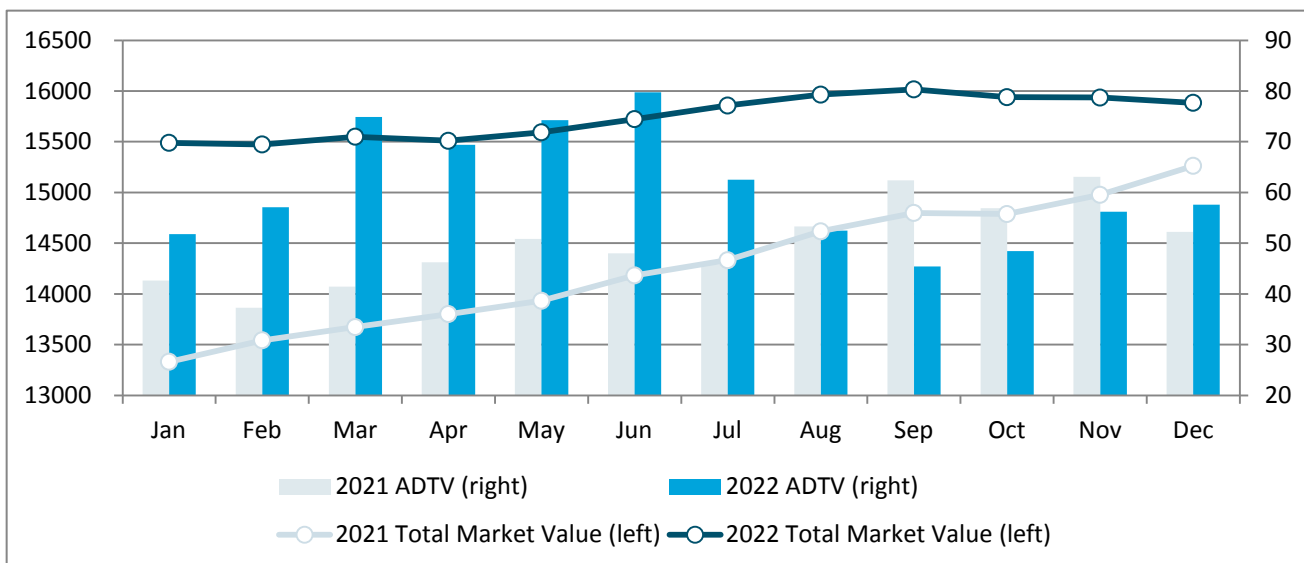
Monthly Northbound and Southbound Net Inflow (RMB bn)



Bond Market

Bond Types	Market Value (RMB bn)	MoM Change	Average Daily Trading Value (RMB bn)	MoM Change
Treasury bonds	918.52	3.08%	3.32	-0.85%
Local government bonds	1149.46	2.84%	1.26	3.03%
Financial bonds	97.14	-4.32%	0.07	31.26%
Corporate bonds	10754.62	-0.63%	5.22	19.77%
Enterprise bonds	978.67	0.92%	30.57	9.50%
Convertible bonds	649.91	0.38%	16.95	-10.77%
Asset-backed securities	1335.76	-3.62%	0.20	-35.49%
Total	15884.08	-0.32%	57.58	2.46%

Monthly Total Market Value and Average Daily Trading Value (RMB bn)

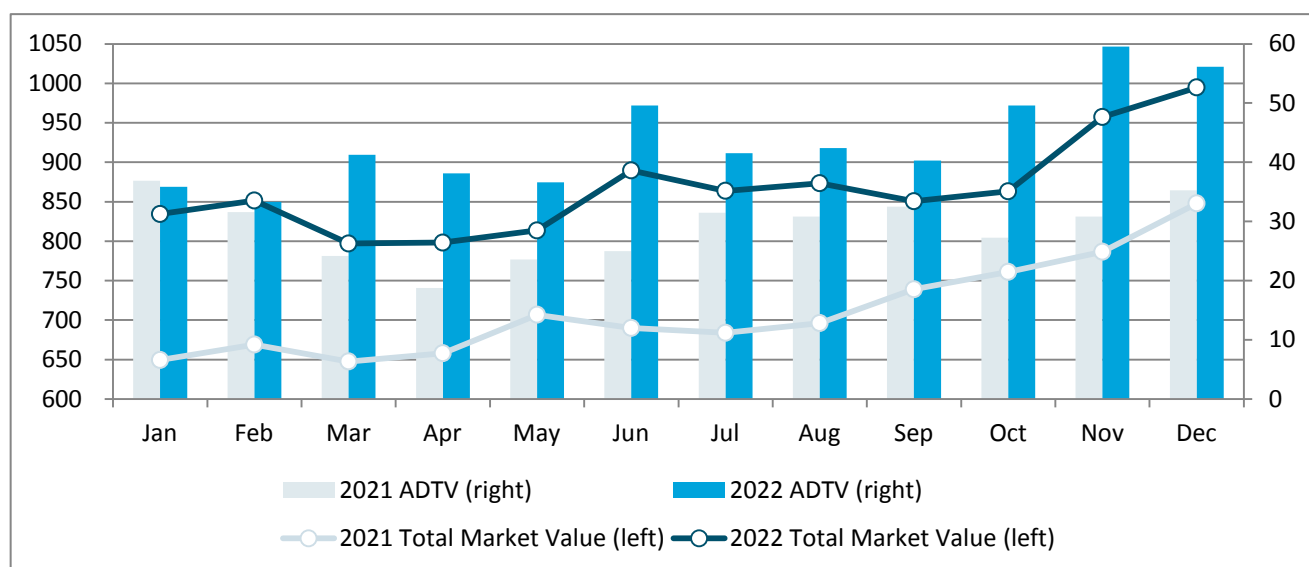


ETF Market

ETF Types	No. of ETFs	Free-float Market Value (RMB bn)	MoM Change	Average Daily Trading Value (RMB bn)	MoM Change
Equity ETF	376	787.71	3.44%	26.16	-13.86%
Bond ETF	13	30.93	14.25%	14.82	49.09%
Commodity ETF (gold)	8	11.17	5.55%	0.91	-41.56%
Cross-Border ETF	48	140.48	3.72%	14.00	-19.53%
Publicly Offered Infrastructure REITs	15	24.53	8.23%	0.25	-4.04%
Total	460	994.82	3.92%	56.13	-5.69%

Note: Exchange-traded money market funds are not included

Monthly Total Market Value and Average Daily Trading Value (RMB bn)

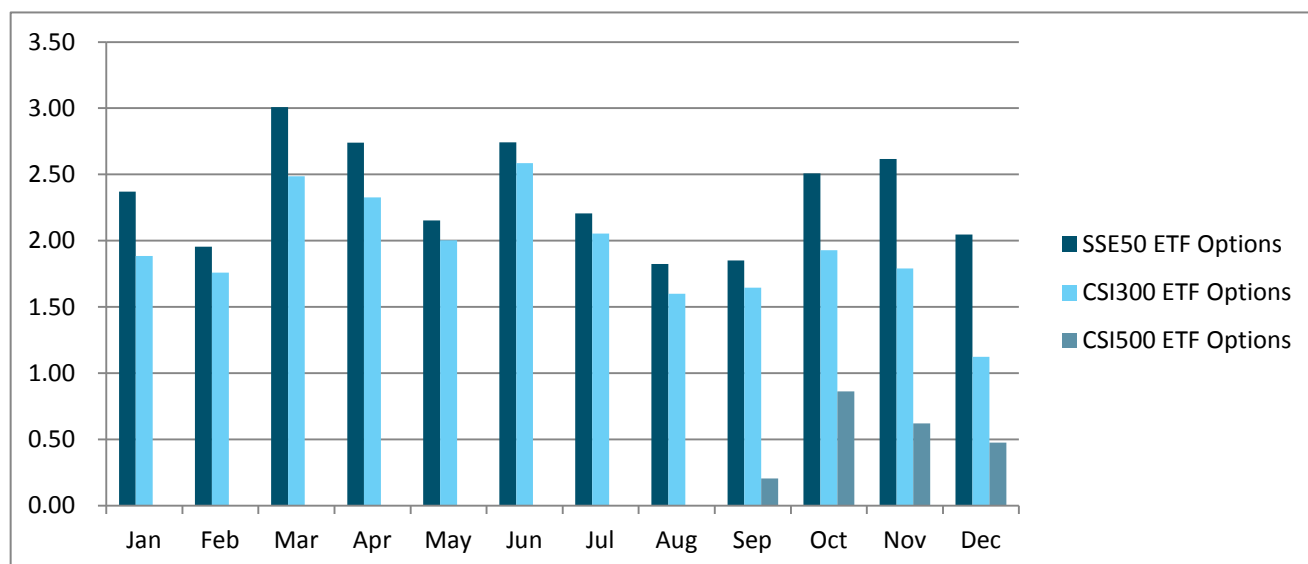


Note: Exchange-traded money market funds are not included

Derivatives Market

Options	Average Daily No. of Contracts Traded (mn)	MoM Change	No. of Call Options Contracts (mn)	MoM Change	No. of Put Options Contracts (mn)	MoM Change	Put/Call Ratio
SSE 50ETF Options	2.05	-21.76%	1.08	-27.15%	0.97	-14.77%	90.07%
CSI 300 ETF Options	1.12	-37.27%	0.58	-38.57%	0.54	-35.81%	92.98%
CSI 500 ETF Options	0.48	-23.36%	0.23	-31.66%	0.25	-13.77%	109.30%

Monthly Average Daily No. of Contracts Traded (mn)



Newly Listed Companies

Code	Name	Industry	Market Cap. (RMB bn)	Listing Day Return
Main Board				
601022.SH	Ningbo Ocean Shipping Co., Ltd.	Marine	17.67	44.04%
601136.SH	Capital Securities Corporation Limited	Investment Banking & Brokerage	47.61	43.99%
STAR Market				
688084.SH	Beijing Jingpin Tezhuang Technology Co.,Ltd.	Electronic Equipment & Instruments	6.26	44.47%
688141.SH	Joulwatt Technology Co., Ltd.	Semiconductors	21.23	32.62%
688143.SH	Yangtze Optical Electronic Co., Ltd.	Communications Equipment	4.39	37.40%
688147.SH	Jiangsu Leadmicro Nano Technology Co., Ltd.	Semiconductor Equipment	11.40	13.38%
688172.SH	Beijing Yandong Microelectronic Co., Ltd.	Semiconductors	22.76	4.69%
688410.SH	Sws Hemodialysis Care Co.,Ltd.	Health Care Equipment	3.66	-18.98%
688420.SH	Tianjin Meiteng Technology Co., Ltd	Industrial Machinery	3.61	1.94%
688475.SH	Hangzhou Ezviz Network Co.,Ltd.	IT Consulting & Other Services	14.59	-12.23%
688489.SH	Sansec Technology Co., Ltd.	Computer Hardware	7.76	51.48%
688496.SH	Suzhou Qingyue Optoelectronics Technology Co., Ltd.	Electronic Equipment & Instruments	4.09	8.84%
688498.SH	Yuanjie Semiconductor Technology Co., Ltd.	Semiconductors	7.17	15.66%
688503.SH	Changzhou Fusion New Material Co., Ltd.	Semiconductors	16.69	35.37%
688525.SH	Biwin Storage Technology Co., Ltd.	Electronic Equipment & Instruments	6.91	14.80%

Edited by LI Tianfang, CHEN Yinghui, and WAN Sijia, Dept. of International Affairs, Shanghai Stock Exchange.

Global Investor Services Team

Dept. of International Affairs

Shanghai Stock Exchange | 上海证券交易所

此文件仅发给指定收件人或机构。其内容可能包含某种享有法律特权或者需要保密的信息。对于任何未经本所明确书面授权而对本文件所载内容进行使用、披露、分发、变更之行为及由此产生的后果，本所概不承担任何责任。如您并非此文件的指定收件人或机构，请立即通知上海证券交易所，并立即销毁此文件。谢谢合作。一旦您收悉此邮件（传真），即表示无条件同意并接受上述所载的免责声明，以及上海证劵交易所在无需给予任何理由或事先通知的情况下，可随时修改、更新、变更或增补本免责声明。

The information contained in this communication is intended solely for the use of the individual or entity to whom it is addressed. It may contain legally privileged or confidential information. The Shanghai Stock Exchange is not liable for any use, disclosure, distribution of or alteration to the contents of this information that has not been expressly authorized in writing by the Shanghai Stock Exchange. If you are not the intended recipient, please inform the Shanghai Stock Exchange of the error and delete the contents immediately. Thank you.

By receiving the email (fax), you expressly agree to the disclaimer above and that the Shanghai Stock Exchange may modify, update, revise or supplement the disclaimer at any time without giving any reason or prior notice.