

SSE Newsletter

In this issue

- Monthly Highlights
- Market Updates
- Fund Raising
- Upcoming Events
- Downloads

Monthly Highlights

- On July 22, the first batch of 25 companies debuts on the SSE STAR Market.
- On July 26, the SSE, the SZSE and the HKEX have announced that if A+H-Share listed company's A-share stock is listed on the SSE STAR Market, it will be included in the northbound trading of SH-HK Stock Connect after relevant business and technical preparation work of the two stock exchanges are ready. The specific time of inclusion will be announced separately.

Downloads

- [Rules Governing the Real-Time Monitoring of Abnormal Trading of Stocks on the Science and Technology Innovation Board of Shanghai Stock Exchange \(for Trial Implementation\)](#)
- [Rules Governing the Listing of Stocks on the Science and Technology Innovation Board of Shanghai Stock Exchange \(Revised in 2019\)](#)
- [Guidelines for After-Hours Fixed-Price Trading of Stocks on the Science and Technology Innovation Board of Shanghai Stock Exchange](#)

Upcoming Events

End of October Shanghai
Shanghai Stock Exchange Global Investors
Conference 2019

(Details will be coming soon)

Market Updates

SSE Main Board

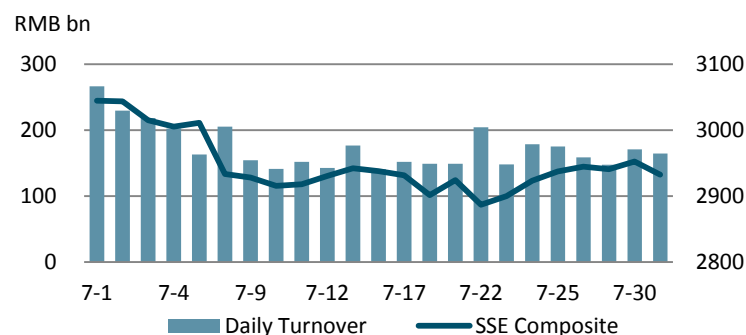
July at a Glance

Index	Closing Price	Monthly Gain/Loss	P/E Ratio
SSE Composite	2932.51	-1.56%	13.12
SSE 180	8496.04	-0.97%	10.95
SSE 380	4561.98	-1.35%	17.40
CSI 300	3835.36	0.26%	12.38

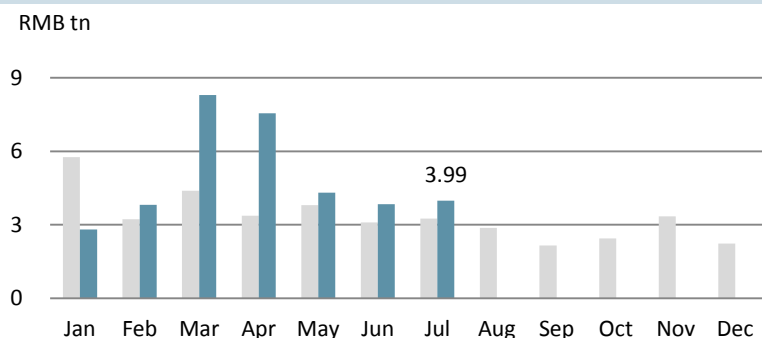
Note: as of July (2019/07/31)

Note: Unless otherwise stated, all the following graphs use the color grey to represent 2018 and indigo to represent 2019.

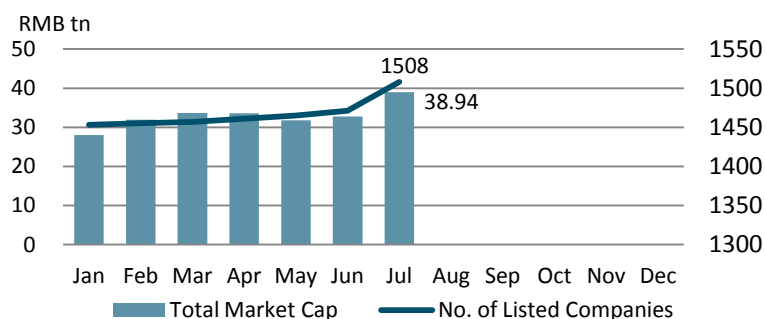
SSE Composite & Daily Turnover



Monthly Turnover



Market Cap. & No. of Listed Comps



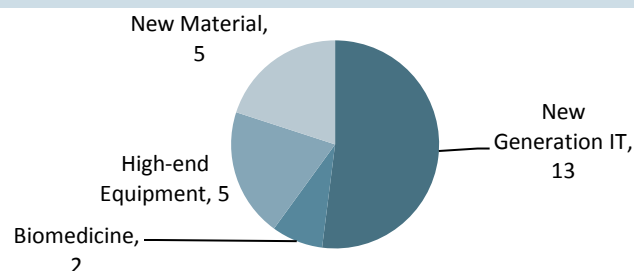
SSE STAR Market

Overview

Listed Companies	25
Market Cap	RMB 581 bn
Turnover	RMB 213 tn
After-Hours Fixed-Price Trading	RMB 460.19 bn

Note: as of July (2019/07/31)

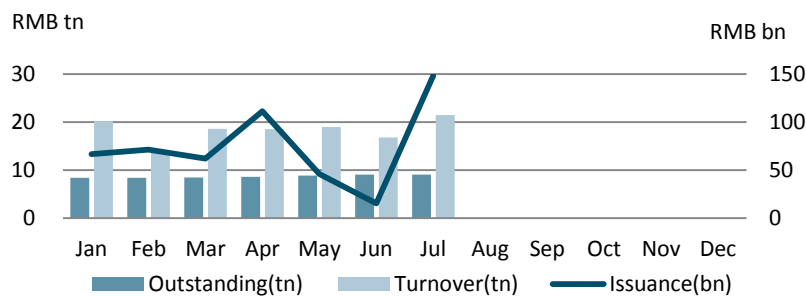
Sectorial Distribution



Note: as of July (2019/07/31)

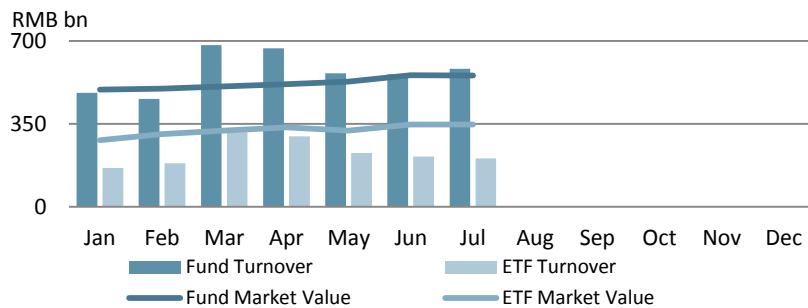
Bond Market

Monthly Turnover, Outstanding & Issuance



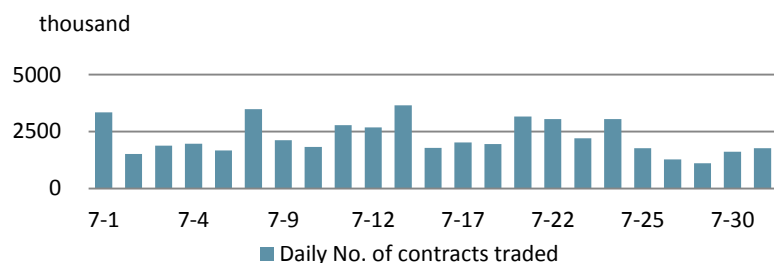
Fund Market

Monthly Turnover & Market Value



Derivatives Market (SSE 50 ETF Options)

Daily No. of Contracts Traded



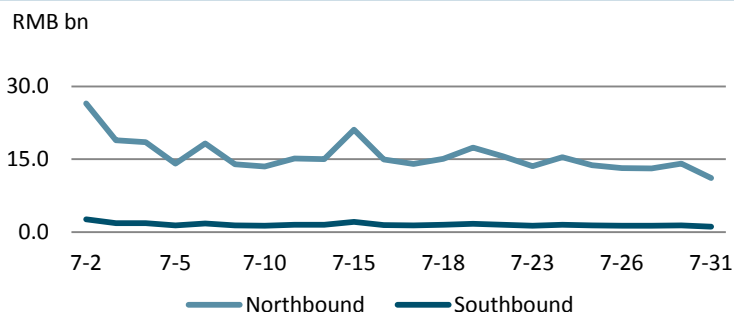
QFII/RQFII

Quota Approved & Licenses Granted

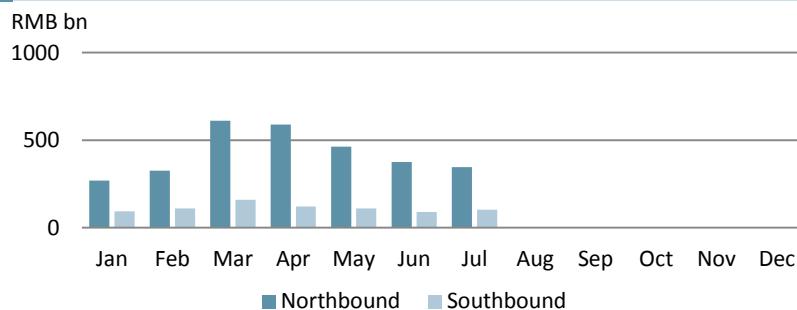
	RQFII	QFII
Quota Approved	RMB 681.22 bn	USD 108.58 bn
Licenses Granted	220	292

Shanghai-Hong Kong Stock Connect

Daily Turnover



Monthly Turnover



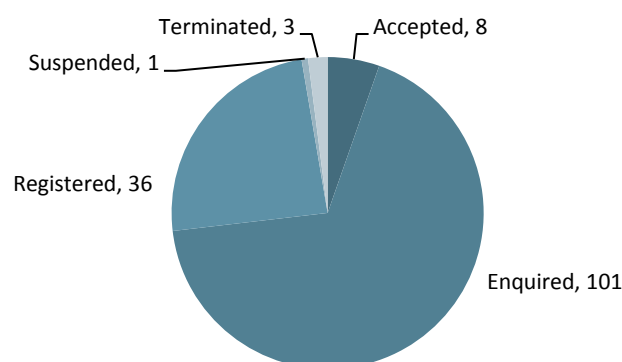
Fund Raising

Listing

		No. of Securities	Fund Raising (RMB bn)
SSE Main Board	IPO	5	3.9
	Refinancing	113	91.4
SSE STAR Market	IPO	25	37
	Refinancing	0	0
Bond		132	123.6

Note: 2019/07/01~2019/07/26

STAR Market Applications Update



Note: as of July (2019/07/26)

Disclaimer

Shanghai Stock Exchange endeavors to ensure that the data and other material in this document are correct and complete, but does not accept liability for any error made or omission from this document. Shanghai Stock Exchange shall not be liable for any claims or losses of any nature, arising indirectly or directly from use of the data or material on this document. The reader of this document shall acknowledge and agree that all proprietary rights in the information received shall remain the property of Shanghai Stock Exchange. Reproduction, redistribution and transmission of any information contained in this document is strictly prohibited. Use of this document is confirmation that you have understood and accepted these terms.

Source: SSE, CSRC, SAFE, Wind

Should you have any queries, please feel free to contact rsfang@sse.com.cn or yhchen@sse.com.cn.

For more information, please visit <http://english.sse.com.cn/overseasinvestors/introduction/briefintro/>.