

# SSE Newsletter

## In this issue

- Monthly Highlights
- Market Updates
- Fund Raising
- Downloads

## Monthly Highlights

- On February 28, the SSE released [Notice on Earnestly Implementing the New Securities Law and Making Effective Efforts Concerning the Listed Companies' Information Disclosure](#).
- On 1 March, the SSE released [Notice on SSE Business Arrangements for Implementing Registration-based System for Public Issuance of Corporate Bonds](#).

## Downloads

- [SSE Facilitates Capital Market Reform and Development through New "Securities Law" and Front-line Regulation](#)
- [Q & A on Implementing Registration-based System for Public Issuance of Corporate Bonds](#)

## Market Updates

### SSE Main Board

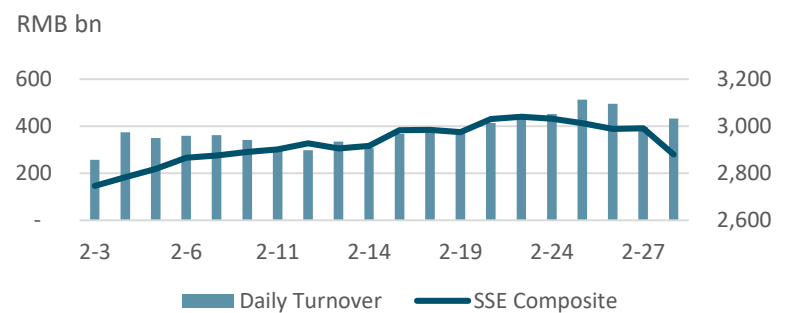
Note: Unless otherwise stated, all the following graphs use the color grey to represent 2019 and indigo to represent 2020.

#### February at a Glance

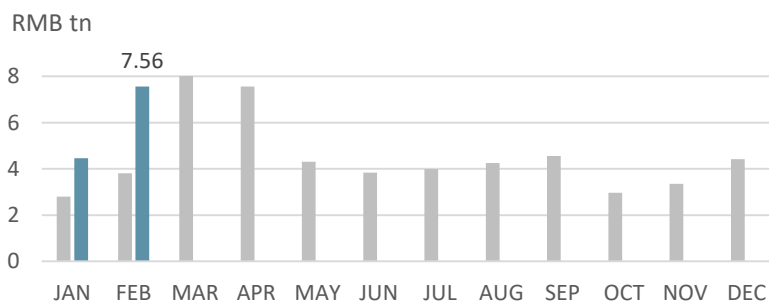
Index	Closing Price	Monthly Gain/Loss	P/E Ratio
SSE Composite	2880.30	-3.23%	12.44
SSE 180	8323.11	-2.97%	10.08
SSE 380	4756.47	-1.07%	18.06
CSI 300	3940.05	-1.59%	11.77

Note: as of Feb (2020/2/28)

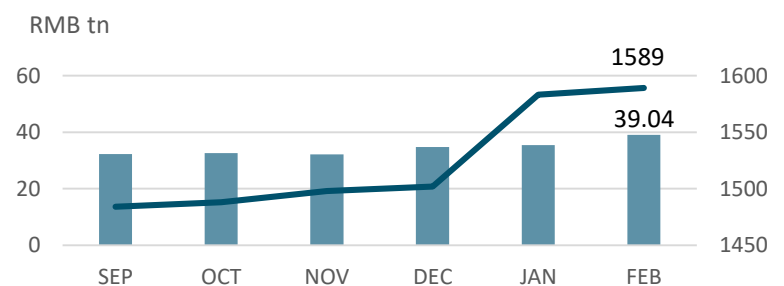
#### SSE Composite & Daily Turnover



#### Monthly Turnover



#### Market Cap. & No. of Listed Comps



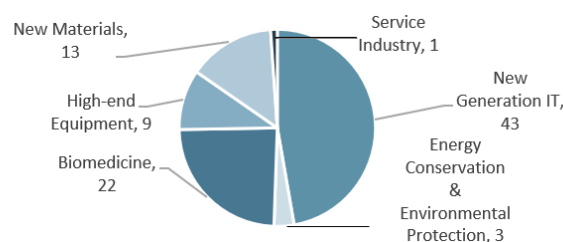
## SSE STAR Market

### Overview

Listed Companies	91
Market Cap	RMB 1.34 tn
Turnover	RMB 544.94 bn
After-Hours Fixed-Price Trading	RMB 1.21 bn

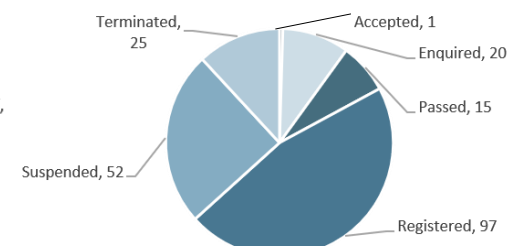
Note: as of Feb (2020/2/28)

### Sectorial Distribution



Note: as of Feb (2020/2/28)

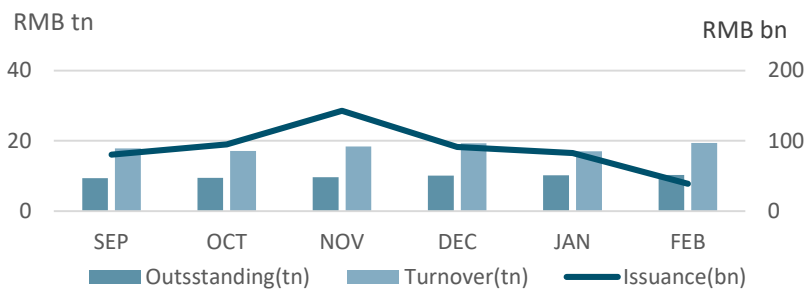
### SSE STAR Market IPO Application



Note: as of Mar (2020/3/3)

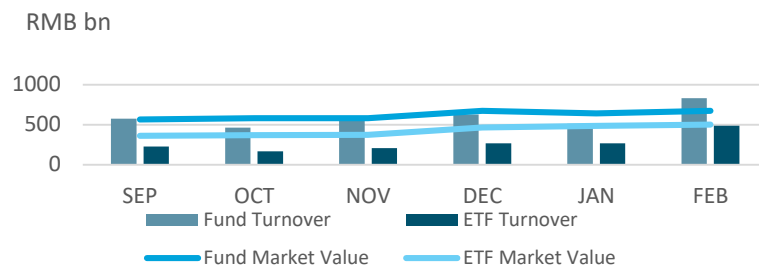
## Bond Market

### Monthly Turnover, Outstanding & Issuance



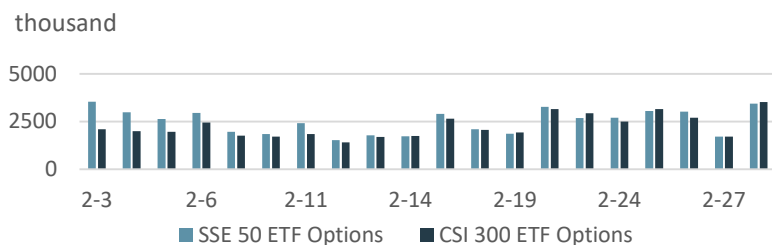
## Fund Market

### Monthly Turnover & Market Value



## Derivatives Market

### Daily No. of Contracts Traded



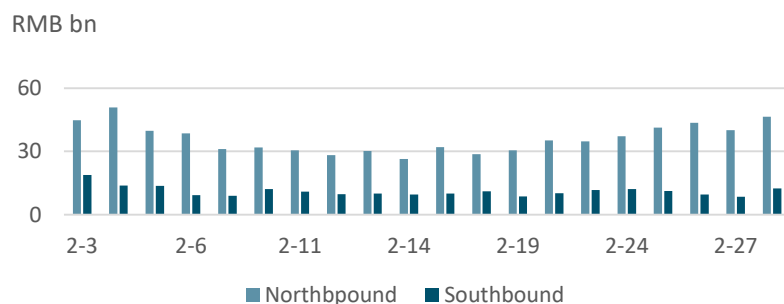
## QFII/RQFII

### Licenses Granted

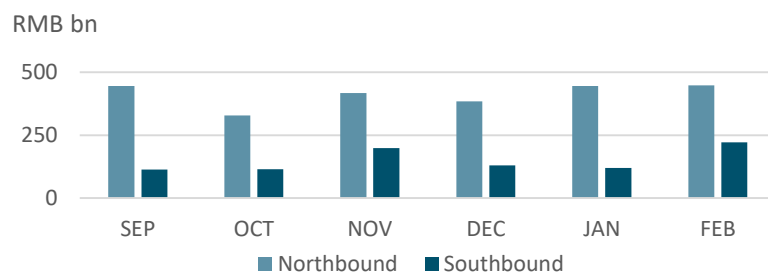
	RQFII	QFII
Licenses Granted	224	294

## Shanghai-Hong Kong Stock Connect

### Daily Turnover



### Monthly Turnover



## Fund Raising

### Listing

		No. of Securities	Fund Raising (RMB bn)
SSE Main Board	IPO	5	6.49
	Refinancing	75	6.52
SSE STAR Market	IPO	12	17.65
	Refinancing	0	0
Bond		142	140.24

Note: 2020/2/1~2020/2/29

## Disclaimer

Shanghai Stock Exchange endeavors to ensure that the data and other material in this document are correct and complete, but does not accept liability for any error made or omission from this document. Shanghai Stock Exchange shall not be liable for any claims or losses of any nature, arising indirectly or directly from use of the data or material on this document. The reader of this document shall acknowledge and agree that all proprietary rights in the information received shall remain the property of Shanghai Stock Exchange. Reproduction, redistribution and transmission of any information contained in this document is strictly prohibited. Use of this document is confirmation that you have understood and accepted these terms.

Source: SSE, CSRC, SAFE, Wind

Should you have any queries, please feel free to contact [rsfang@sse.com.cn](mailto:rsfang@sse.com.cn) or [yhchen@sse.com.cn](mailto:yhchen@sse.com.cn).

For more information, please visit <http://english.sse.com.cn/overseasinvestors/introduction/briefintro/>.

