

SSE Newsletter

In this issue

- Monthly Highlights
- Market Updates
- Fund Raising
- Downloads

Monthly Highlights

- [On May 21, the SSE released Notice of Matters Concerning Launching Pilot Program for Public Issuance of Short-Term Corporate Bonds.](#)
- [On May 29, in order to further improve the trading system, the SSE revised and issued the SSE Administrative Measures for Trading of Stocks on Risk Alert Board .](#)
- [On May 29, the SSE responded to suggestions related to the capital market put forward during the “Two Sessions”, including introduction of market maker mechanism, research on single T+0 trading and improving the methodology of the SSE Composite Index.](#)

Downloads

- [STAR Companies Release Annual Reports with Highlights](#)
- [Overall Analysis Report on 2019 Annual Reports of Companies Listed on SSE Main Board](#)

Market Updates

SSE Main Board

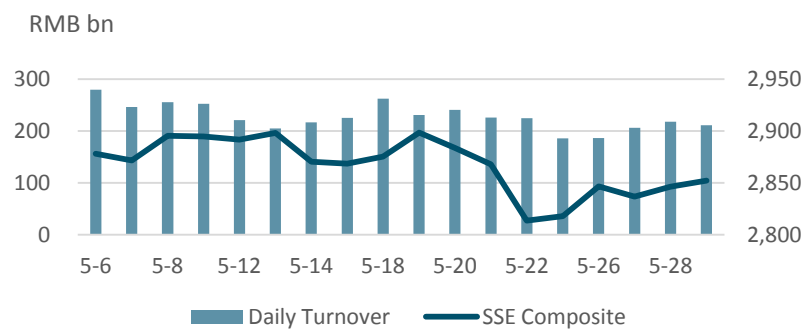
Note: Unless otherwise stated, all the following graphs use the color grey to represent 2019 and indigo to represent 2020. Data Range: SSE Main Board A-share Companies

May at a Glance

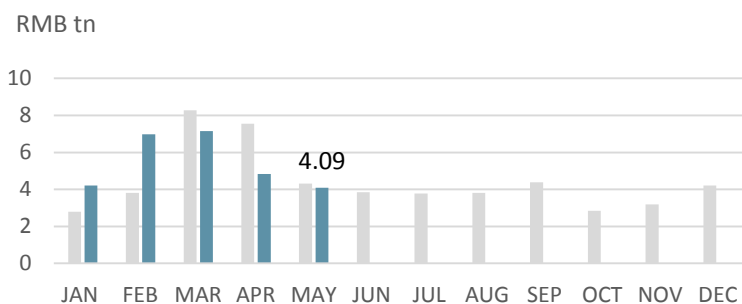
Index	Closing Price	Monthly Gain/Loss	P/E Ratio
SSE Composite	2852.35	-0.27%	13.09
SSE 180	8208.98	-1.41%	10.51
SSE 380	4866.13	2.05%	18.63
CSI 300	3867.02	-1.16%	12.30

Note: as of May (2020/5/29)

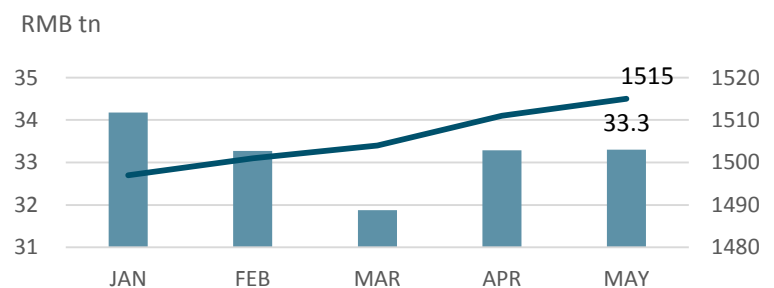
SSE Composite & Daily Turnover



Monthly Turnover



Market Cap. & No. of Listed Comps



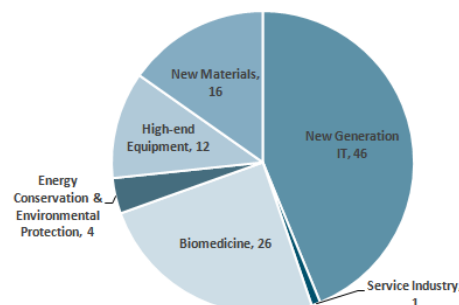
SSE STAR Market

Overview

Listed Companies	105
Market Cap	RMB 1598.1 bn
Turnover	RMB 393.3 bn
After-Hours Fixed-Price Trading	RMB 113.6 mn

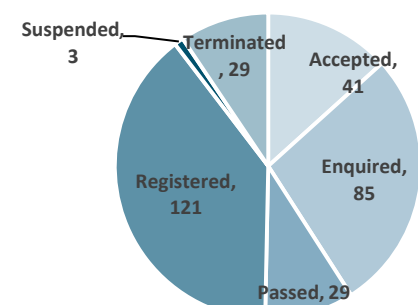
Note: as of May (2020/5/29)

Sectorial Distribution



Note: as of May(2020/5/29)

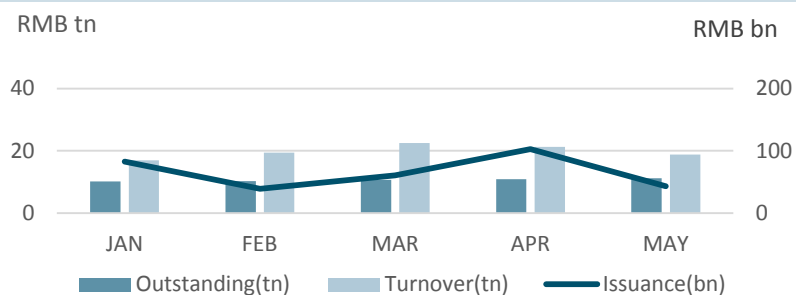
STAR Market Applications Update



Note: as of May (2020/5/29)

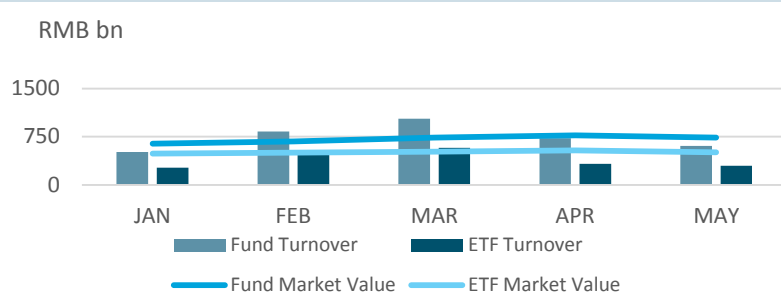
Bond Market

Monthly Turnover, Outstanding & Issuance



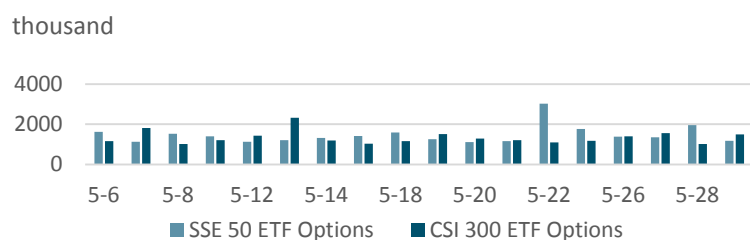
Fund Market

Monthly Turnover & Market Value



Derivatives Market

Daily No. of Contracts Traded



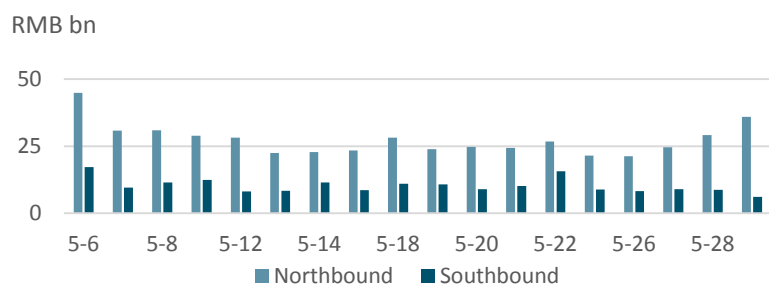
QFII/RQFII

Licenses Granted

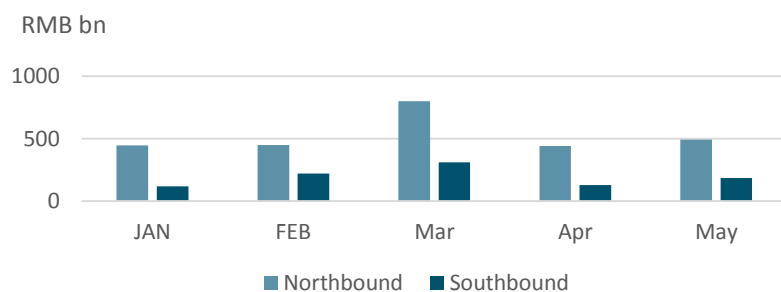
	RQFII	QFII
Licenses Granted	230	295

Shanghai-Hong Kong Stock Connect

Daily Turnover



Monthly Turnover



Fund Raising

Listing

		No. of Securities	Fund Raising (RMB bn)
SSE Main Board	IPO	4	5.78
	Refinancing	66	27.83
SSE STAR Market	IPO	5	3.72
	Refinancing	0	0
Bond		272	265.62

Note: 2020/5/1~2020/5/31

Disclaimer

Shanghai Stock Exchange endeavors to ensure that the data and other material in this document are correct and complete, but does not accept liability for any error made or omission from this document. Shanghai Stock Exchange shall not be liable for any claims or losses of any nature, arising indirectly or directly from use of the data or material on this document. The reader of this document shall acknowledge and agree that all proprietary rights in the information received shall remain the property of Shanghai Stock Exchange. Reproduction, redistribution and transmission of any information contained in this document is strictly prohibited. Use of this document is confirmation that you have understood and accepted these terms.

Source: SSE, CSRC, SAFE, Wind

Should you have any queries, please feel free to contact sjwan@sse.com.cn or yhchen@sse.com.cn.

For more information, please visit <http://english.sse.com.cn/home/>.

