

SSE Newsletter

In this issue

- Monthly Highlights
- Market Updates
- Fund Raising
- Downloads

Monthly Highlights

- On October 9, the State Council issued the *Opinions on Further Improving the Quality of Listed Companies (Guo Fa [2020] No. 14 Document)* and the SSE said that its primary goal in current regulatory work is quality improvement of listed companies.
- On October 27th, the "Shanghai Stock Exchange Global Investors Conference 2020" inaugurated in Shanghai. The three-day event was attended by prominent experts in the industry with a highly diversified agenda featuring the most cutting-edge topics.
- In October 2020, under the guidance of the Investor Protection Bureau of the CSRC, the SSE launched a series of "World Investor Week 2020" activities.

Downloads

[Guidelines No.1 on the Application of Securities Trading Rules of the Shanghai Stock Exchange for Qualified Foreign Institutional Investors and RMB Qualified Foreign Institutional Investors](#)

[Q&A on the New QFII Guidelines](#)

Market Updates

SSE Main Board

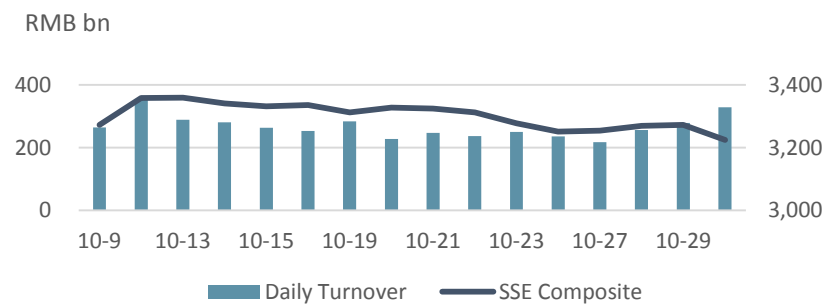
Note: Unless otherwise stated, all the following graphs use the color grey to represent 2019 and indigo to represent 2020.
Data Range: SSE Main Board A-share Companies

October at a Glance

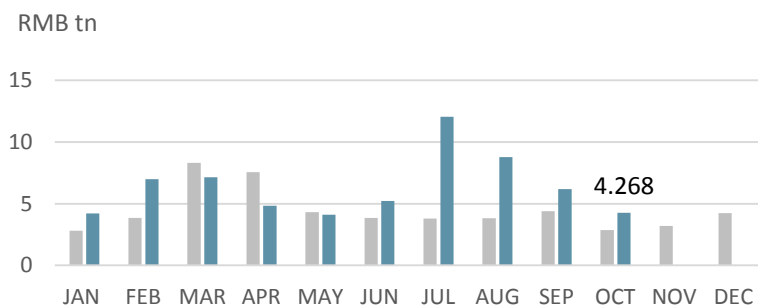
Index	Closing Price	Monthly Gain/Loss	P/E Ratio
SSE Composite	3224.53	0.20	15.37
SSE 180	9604.23	0.88	12.32
SSE 380	5559.56	-0.78	20.04
CSI 300	4695.33	2.35	14.90

Note: as of Oct (2020/10/30)

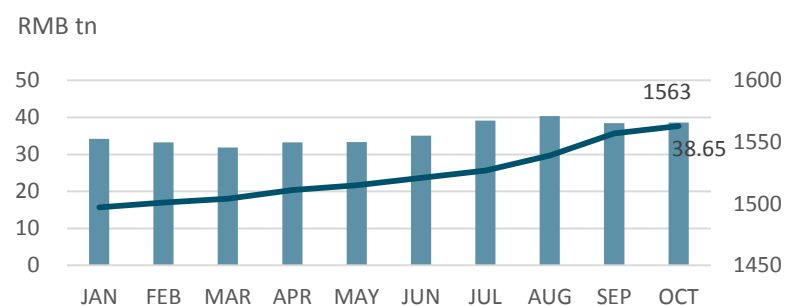
SSE Composite & Daily Turnover



Monthly Turnover



Market Cap. & No. of Listed Comps



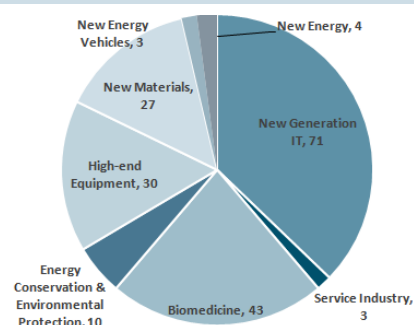
SSE STAR Market

Overview

Listed Companies	191
Market Cap	RMB 2.96 tn
Turnover	RMB 405.9 bn
After-Hours Fixed-Price Trading	RMB 64.8 mn

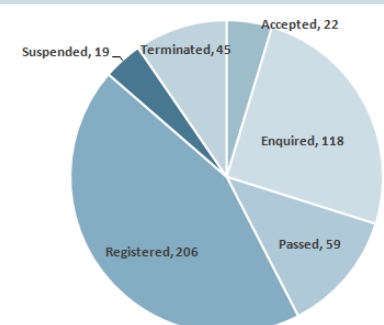
Note: as of Oct (2020/10/30)

Sectorial Distribution



Note: as of Oct (2020/10/30)

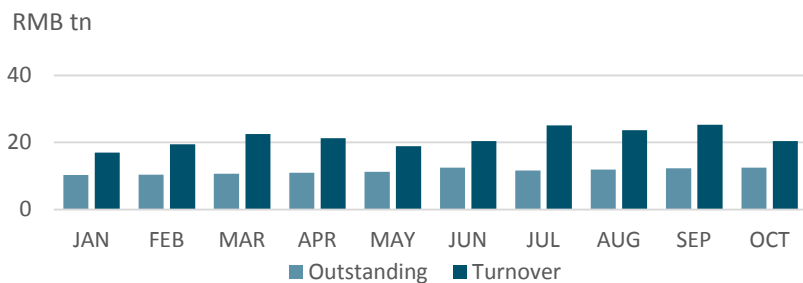
STAR Market Applications Update



Note: as of Oct (2020/10/30)

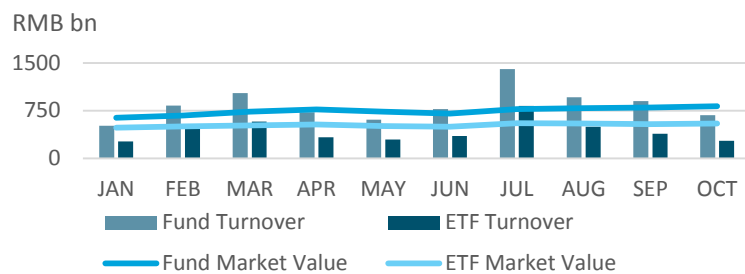
Bond Market

Monthly Outstanding & Turnover



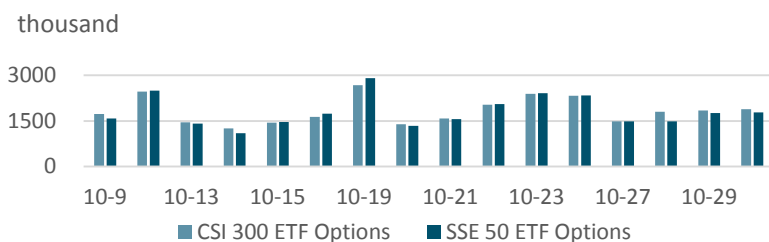
Fund Market

Monthly Turnover & Market Value



Derivatives Market

Daily No. of Contracts Traded



QFII/RQFII

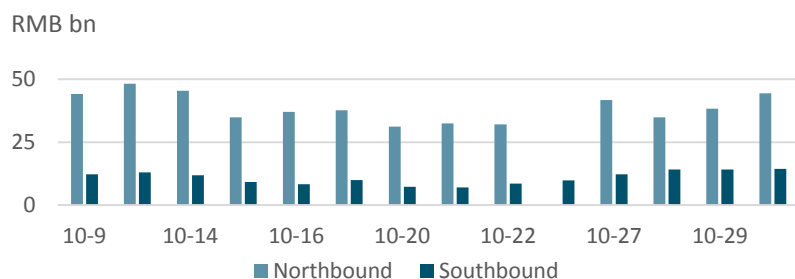
Licenses Granted

	RQFII	QFII
Licenses Granted	258	323

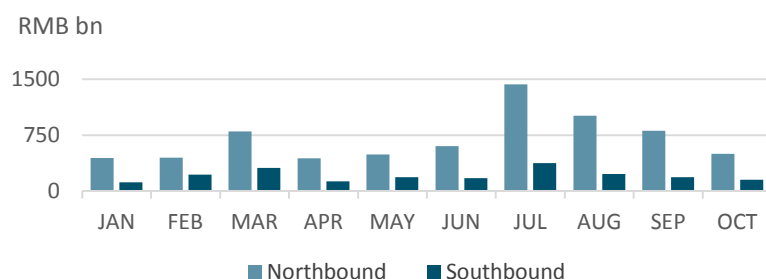
Note: as of Sep (2020/9/30)

Shanghai-Hong Kong Stock Connect

Daily Turnover



Monthly Turnover



Fund Raising

Listing

		No. of Securities	Fund Raising (RMB bn)
SSE Main Board	IPO	6	8.63
	Refinancing	112	27.1
SSE STAR Market	IPO	7	8.13
	Refinancing	1	0.002
Bond		468	371.8

Note: 2020/10/1~2020/10/30

Disclaimer

Shanghai Stock Exchange endeavors to ensure that the data and other material in this document are correct and complete, but does not accept liability for any error made or omission from this document. Shanghai Stock Exchange shall not be liable for any claims or losses of any nature, arising indirectly or directly from use of the data or material on this document. The reader of this document shall acknowledge and agree that all proprietary rights in the information received shall remain the property of Shanghai Stock Exchange. Reproduction, redistribution and transmission of any information contained in this document is strictly prohibited. Use of this document is confirmation that you have understood and accepted these terms.

Source: SSE, CSRC, SAFE, Wind

Should you have any queries, please feel free to contact sjwan@sse.com.cn or yhchen@sse.com.cn.

For more information, please visit <http://english.sse.com.cn/home/>.

