

SSE Newsletter

In this issue

- Monthly Highlights
- Market Updates
- Fund Raising
- Downloads

Downloads

[Overview of SSE Market \(2020\)](#)

[Notice of Issuing the Rules of Shanghai Stock Exchange for Issuance and Listing Review of Stocks on the SSE STAR Market \(Revised in 2020\)](#) (in Chinese)

Monthly Highlights

- On Dec 4, the SSE revised and issued rules for issuance and listing review of Stocks on SSE STAR Market and measures for administration of SSE STAR Market listing committee.
<http://english.sse.com.cn/news/newsrelease/c/5282141.shtml>
- On Dec 19, the SSE holds meetings to mark 30th anniversary.
<http://english.sse.com.cn/news/newsrelease/c/5287822.shtml>
- On December 31, the SSE issued new delisting rules.
http://www.sse.com.cn/aboutus/mediacenter/hotandd/c/c_20201231_5294528.shtml
(in Chinese)

Market Updates

SSE Main Board

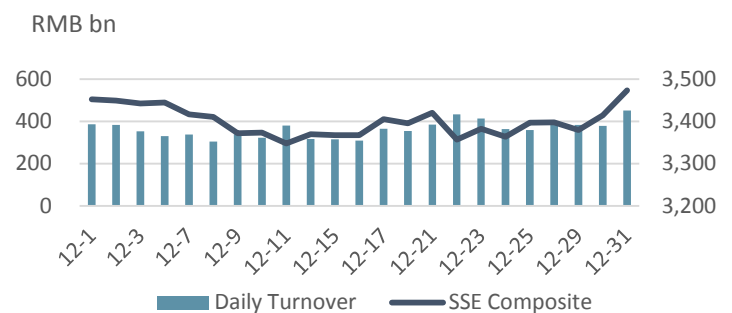
Note: Unless otherwise stated, all the following graphs use the color grey to represent 2019 and indigo to represent 2020.
Data Range: SSE Main Board A-share Companies

December at a Glance

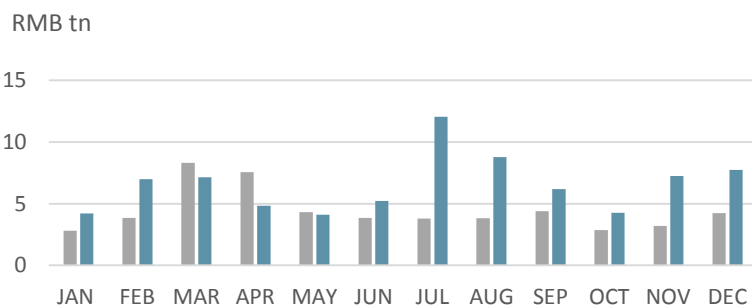
Index	Closing Price	Monthly Gain/Loss (%)	P/E Ratio
SSE Composite	3473.07	2.40	16.76
SSE 180	10685.41	4.65	14.05
SSE 380	5815.60	1.53	20.11
CSI 300	5211.29	5.06	17.02

Note: as of Dec (2020/12/31)

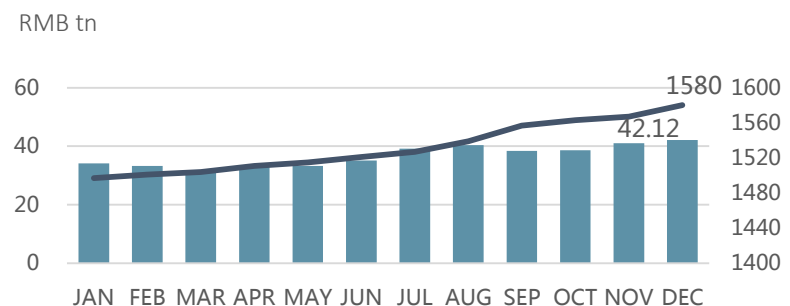
SSE Composite & Daily Turnover



Monthly Turnover



Market Cap. & No. of Listed Comps



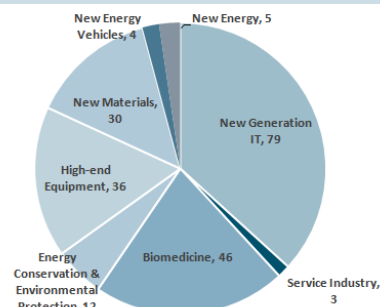
SSE STAR Market

Overview

Listed Companies	215
Market Cap	RMB 3.35 tn
Turnover	RMB 667.48 bn
After-Hours Fixed-Price Trading	RMB 77.12 mn

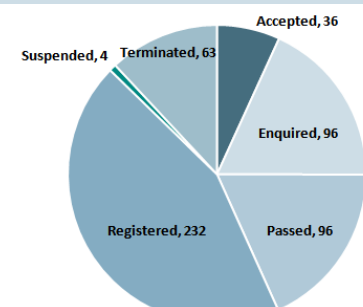
Note: as of Dec (2020/12/31)

Sectorial Distribution



Note: as of Dec (2020/12/31)

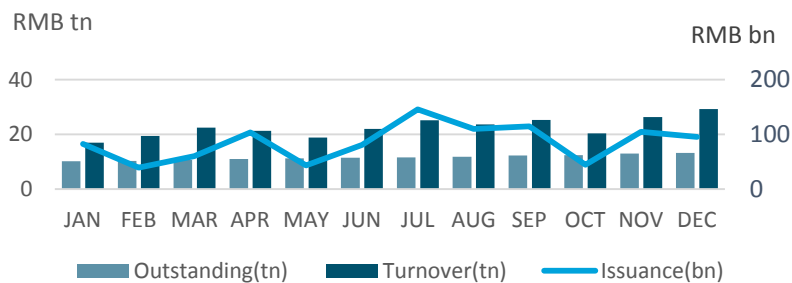
STAR Market Applications Update



Note: as of Dec (2020/12/31)

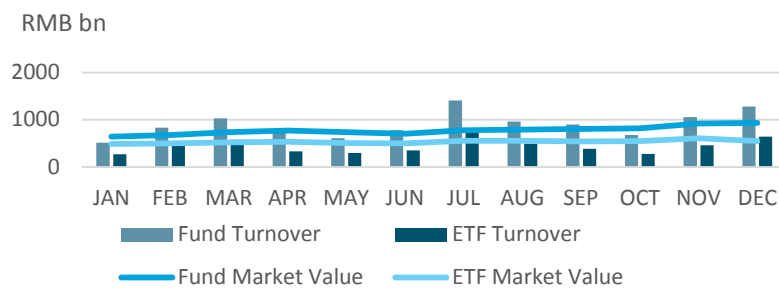
Bond Market

Monthly Outstanding & Turnover



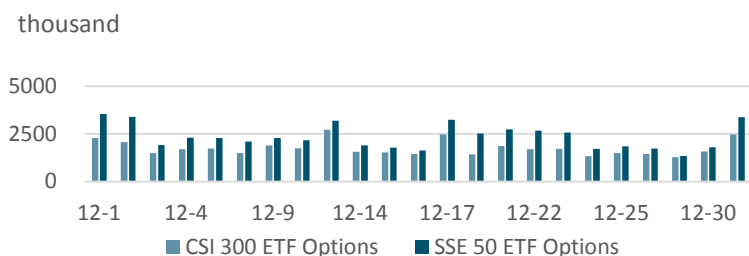
Fund Market

Monthly Turnover & Market Value



Derivatives Market

Daily No. of Contracts Traded



QFII

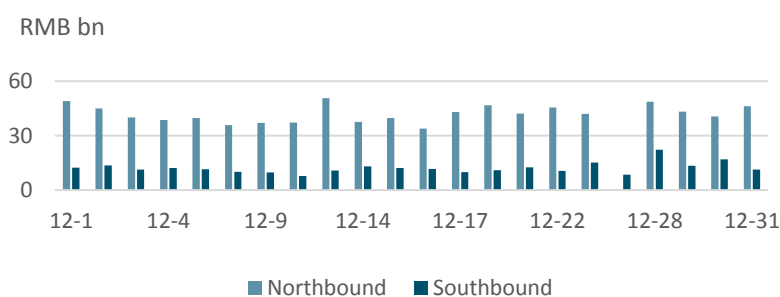
Licenses Granted

	In Total	Granted in Nov
QFII Licenses Granted	535	19

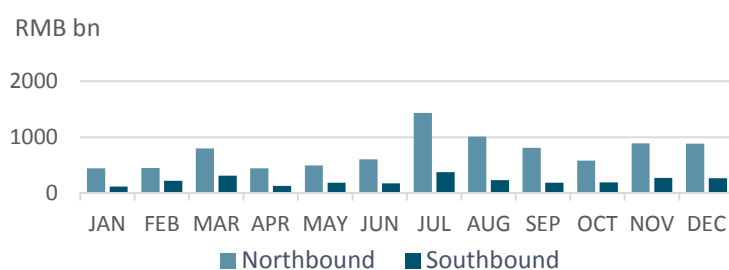
Note: as of Nov (2020/11/30)

Shanghai-Hong Kong Stock Connect

Daily Turnover



Monthly Turnover



Fund Raising

Listing

		No. of Securities	Fund Raising (RMB bn)
SSE Main Board	IPO	13	9.19
	Refinancing	119	54.34
SSE STAR Market	IPO	18	20.43
	Refinancing	2	0.34
Bond		660	513.04

Note: 2020/12/1~2020/12/31

Disclaimer

Shanghai Stock Exchange endeavors to ensure that the data and other material in this document are correct and complete, but does not accept liability for any error made or omission from this document. Shanghai Stock Exchange shall not be liable for any claims or losses of any nature, arising indirectly or directly from use of the data or material on this document. The reader of this document shall acknowledge and agree that all proprietary rights in the information received shall remain the property of Shanghai Stock Exchange. Reproduction, redistribution and transmission of any information contained in this document is strictly prohibited. Use of this document is confirmation that you have understood and accepted these terms.

Source: SSE, CSRC, SAFE, Wind

Should you have any queries, please feel free to contact sjwan@sse.com.cn or yhchen@sse.com.cn.

For more information, please visit <http://english.sse.com.cn/home/>.

