

Source: SSE, Wind, as of November 30, 2022.

## Monthly News Highlights

### **Parallel Session on High-Quality Opening-Up of China's Capital Market of the 5th Hongqiao International Economic Forum Successfully Held**

Nov 5

On November 5, 2022, the Parallel Session on "High-Quality Opening-Up of China's Capital Market" of the Fifth Hongqiao International Economic Forum was successfully held at the National Exhibition and Convention Center (Shanghai). The parallel session was co-hosted by the Shanghai Stock Exchange (SSE) and the Secretariat of the Hongqiao International Economic Forum. Fang Xinghai, Vice Chairman of the CSRC, Wu Qing, Executive Vice Mayor of Shanghai, Qiu Yong, Chairman of the SSE, and other officials from the SAFE, Department of Fund and Intermediary Supervision of CSRC, the Shanghai Municipal Financial Regulatory Bureau, etc. attended the forum. More than 150 guests from regulators and domestic and international financial institutions were present. Fang Xinghai, Wu Qing and Cai Jianchun, President of SSE, delivered speeches at the opening ceremony.

<http://english.sse.com.cn/news/newsrelease/c/5711527.shtml>

### **Mapping of SRDI "Little Giants" on STAR Market: Total Operating Revenue Increases by 46% in First Three Quarters, Mostly in Jiangsu, Guangdong, Shanghai and Beijing**

Nov 7

Since its running for more than three years, the STAR Market has brought together more than 480 listed companies. It has become the first choice for enterprises with "key and core technology" to go public, and the main gathering place for the listing of specialized, refinement, differential and innovation (SRDI) enterprises since the introduction of the registration system.

<http://english.sse.com.cn/news/newsrelease/c/5711462.shtml>

### **1,000th Listed Company under Registration Scheme! A-Share to Usher in Critical Leap**

Nov 15

On November 10, 2022, GRINM Semiconductor Materials Co., Ltd. (hereinafter referred to as "GRINM"), was listed on the STAR Market, becoming the 485th listed company on the STAR Market and the 1,000th listed company under the A-share registration scheme.

The registration scheme is a "pivot" project to comprehensively deepen capital market reform. From the STAR Market as a test field to the ChiNext and the Beijing Stock Exchange (BSE), the existing and incremental reform has made steady progress, and the registration scheme reform has moved forward smoothly and rapidly. A large number of "SRDI (Specialized, Refinement, Differential and Innovation)" companies with "key and core technology" and "three creations (innovation, creation, creativity) and four news (new technologies, new industries, new business forms, new models)" have emerged in the capital market.

<http://english.sse.com.cn/news/newsrelease/c/5711992.shtml>

## SSE Global Investors Conference 2022 Successfully Held

Nov.16

The week-long conference brought together nearly 100 distinguished guests from top global investment institutions and A-share listed companies. They shared their experience of investing in the China's market with around 1,400 international investors and passed on their good expectations for China's prospects.

More information about the event is available at:

<http://roadshow.sseinfo.com/event.do?topic=ssegic2022>

## SSE's "Integrated Online Platform" Goes Live

Nov 25

On 25 November, the SSE's "Integrated Online Platform" went live, marking a solid step towards building a digital and intelligent exchange. As securities products become more abundant and market participants increase year by year, market participants face some inconvenience in conducting business on the SSE. To enhance the convenience of market participants, the SSE has launched the "Integrated Online Platform" to enable them to "access one website for all things".

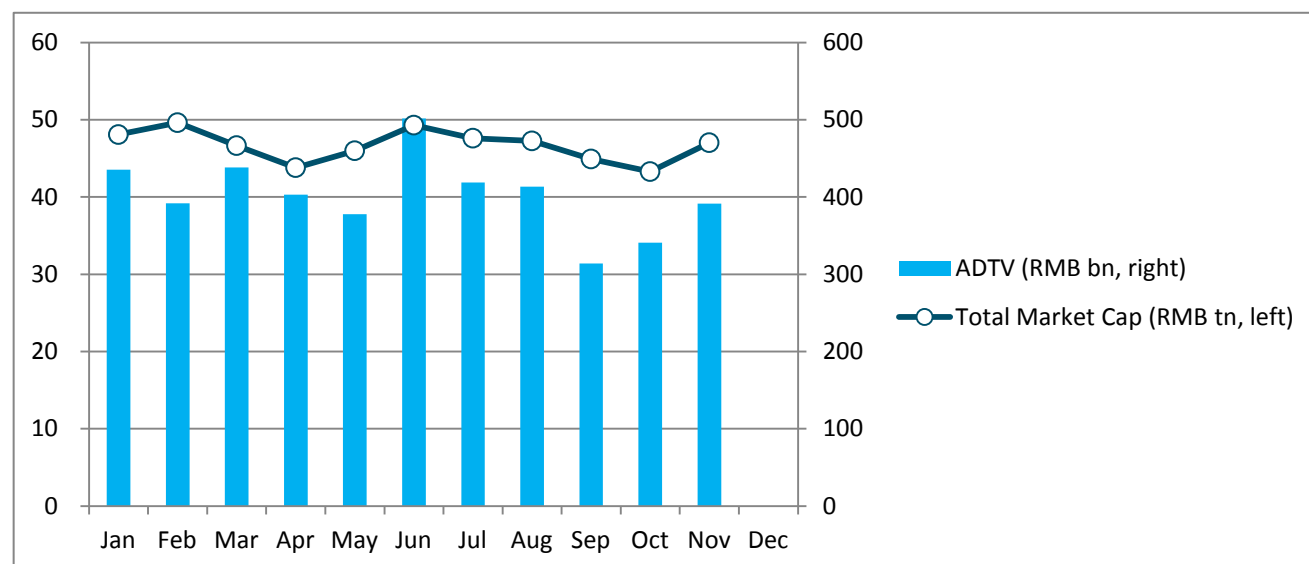
<http://english.sse.com.cn/news/newsrelease/c/5712990.shtml>

## Equity Market

### ● Market Overview

Boards	No. of Listed Companies	Total Market Cap. (RMB tn)	PE (LYR)	Average Daily Trading Value (RMB bn)	Average Daily Trading Value MoM Change
Main Board A	1666	41.07	11.84	327.59	16.68%
STAR Market	488	5.96	46.10	64.00	6.37%

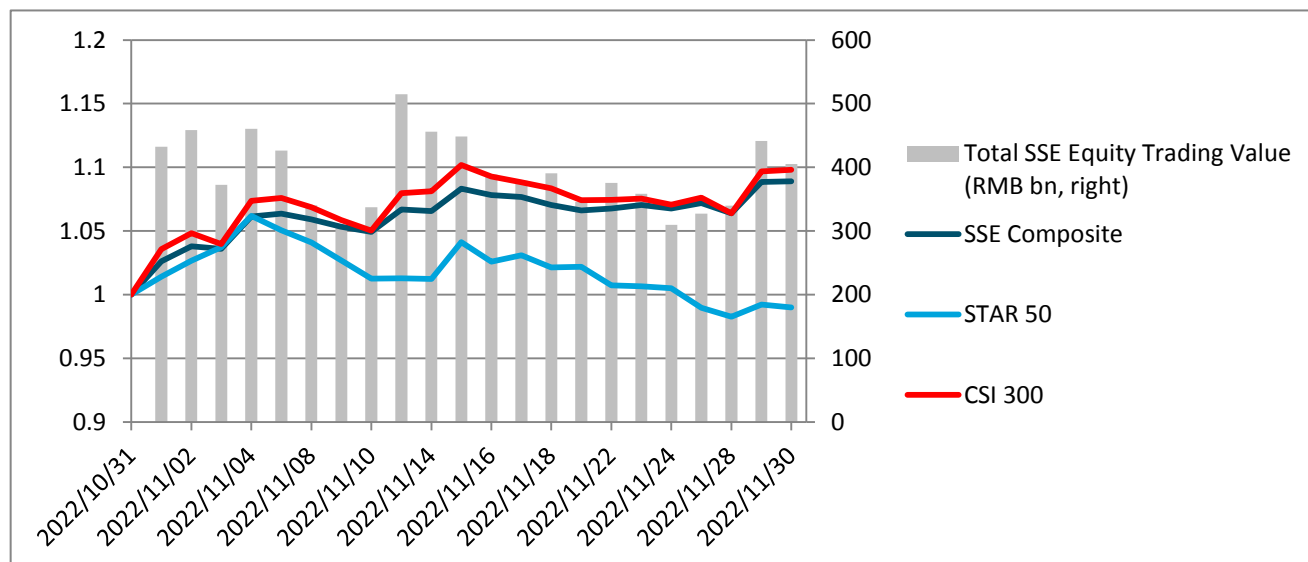
### Shanghai A Shares (Main Board A & STAR Market) Market Cap & Trading Value



### ● Index Performance

Indexes	Closing Price	Monthly Performance	YTD Performance
SSE Composite	3151.3353	8.91%	-13.42%
SSE 50	2606.5427	13.53%	-20.39%
SSE 180	8263.2898	11.20%	-18.43%
STAR 50	1000.2633	-1.00%	-28.46%
CSI 300	3853.0365	9.81%	-22.01%

## Index Performance & Equity Trading Value



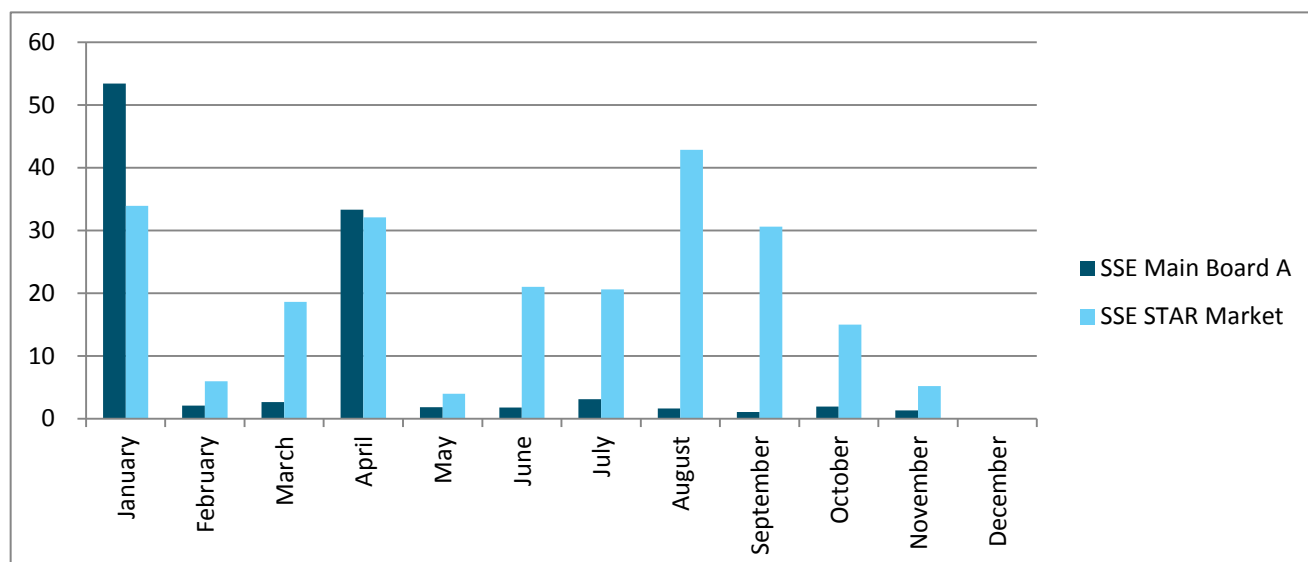
Note: the indexes are rebased to October 31, 2022.

### ● IPO

2022	Main Board A		STAR Market	
	No. of Newly Listed Companies	IPO Proceeds (RMB bn)	No. of Newly Listed Companies	IPO Proceeds (RMB bn)
January	3	53.37	10	33.93
February	3	2.06	4	5.97
March	4	2.61	13	18.62
April	2	33.28	16	32.09
May	3	1.80	4	3.94
June	1	1.75	7	21.01
July	4	3.07	11	20.59
August	2	1.59	17	42.85
September	2	1.07	14	31.23
October	3	1.90	10	14.97
November	2	1.33	5	5.18
<b>Total</b>	<b>29</b>	<b>103.83</b>	<b>111</b>	<b>229.76</b>

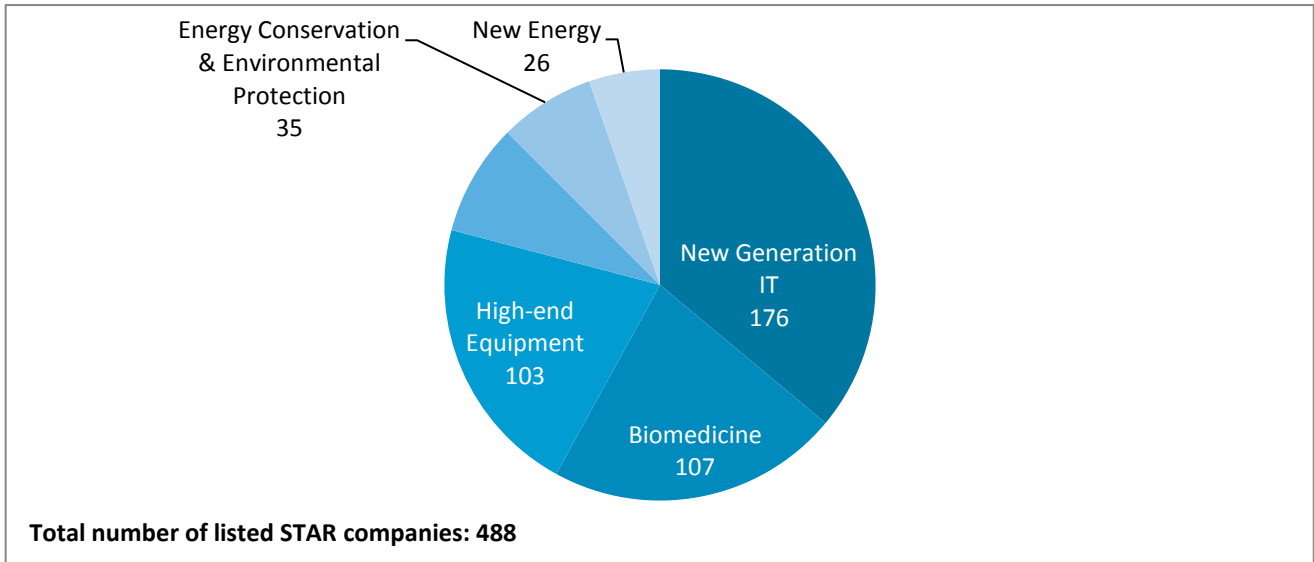
Note: a list of all the newly listed companies this month is available at the last page.

### Monthly IPO Proceeds (RMB bn)

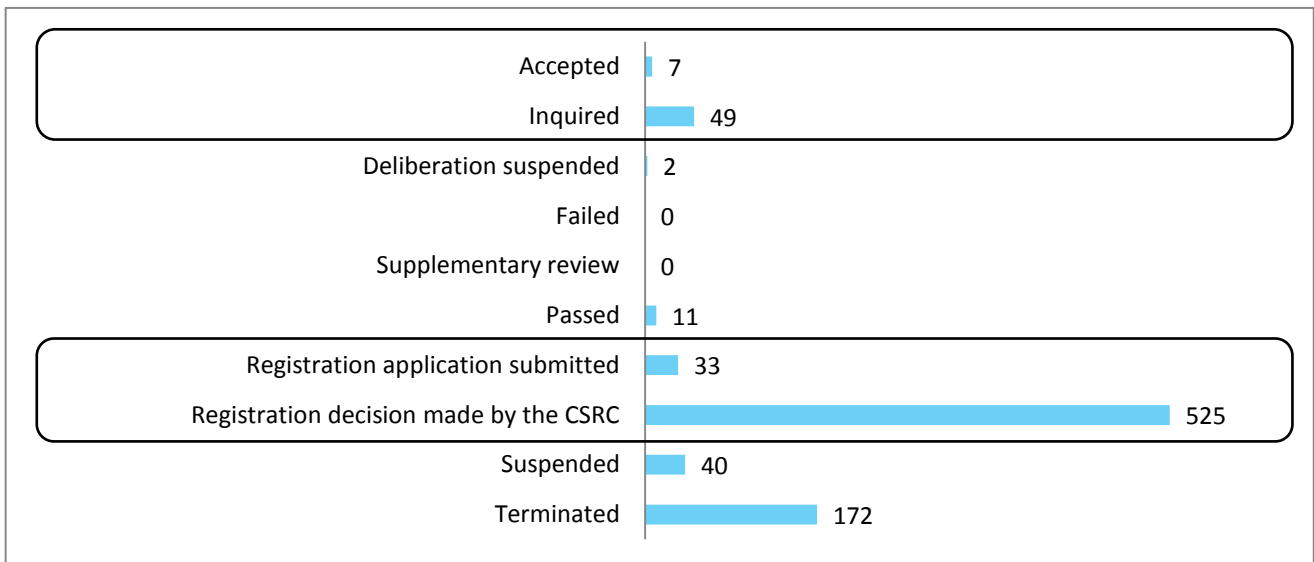


● STAR Market

STAR Market Sector Distribution

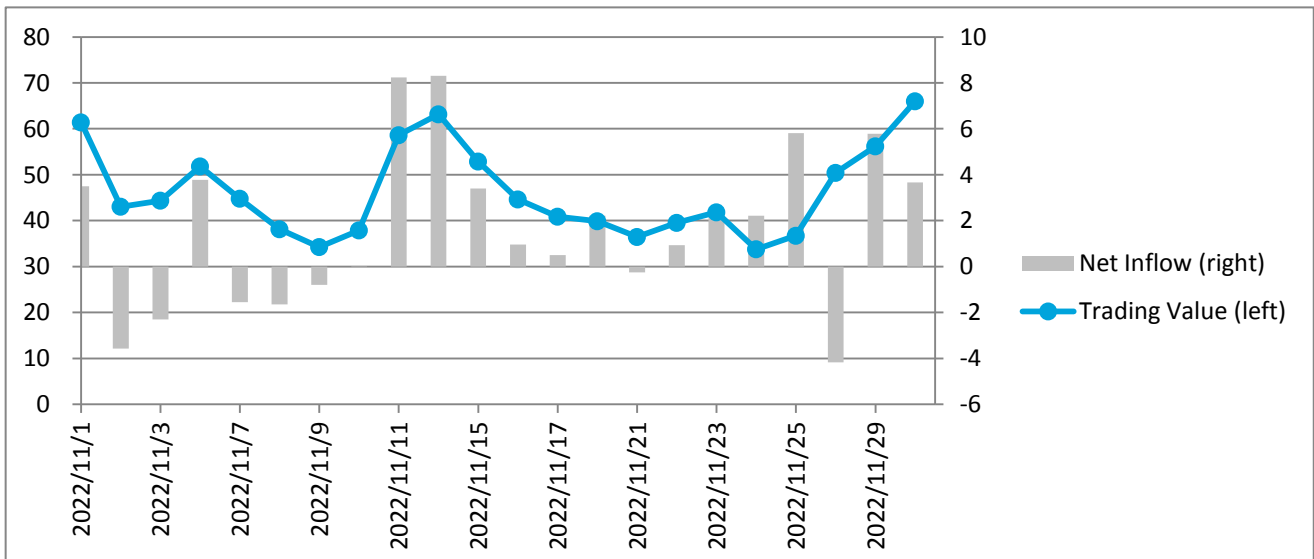


STAR Market IPO Pipeline

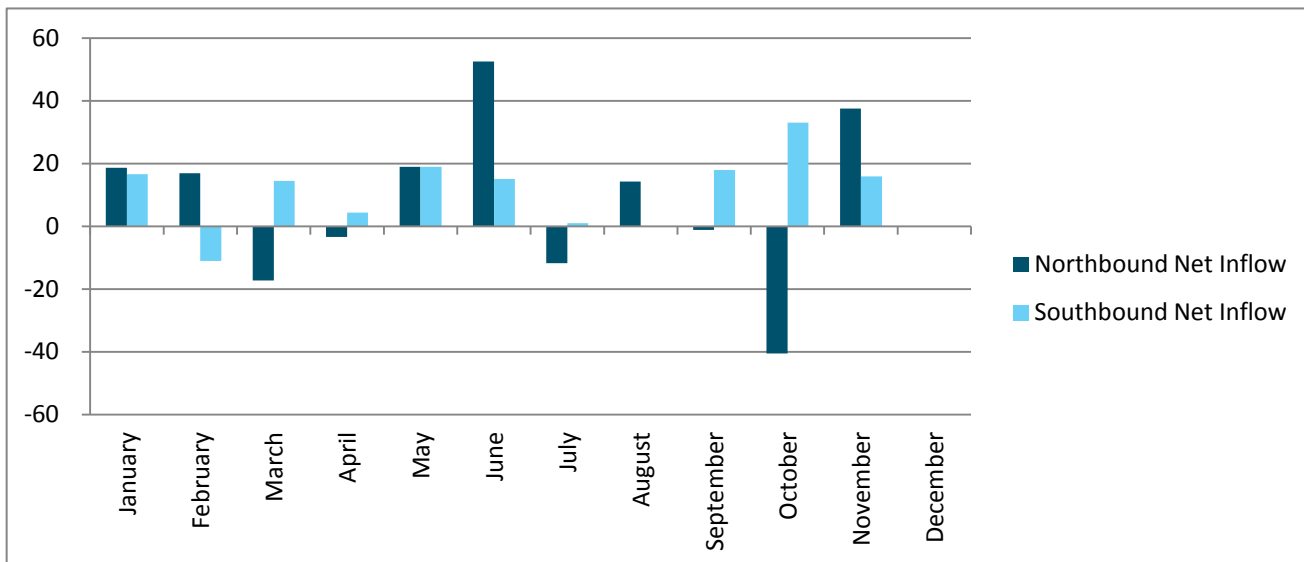


● Shanghai-Hong Kong Stock Connect

Daily Northbound Trading Value and Net Inflow (RMB bn)



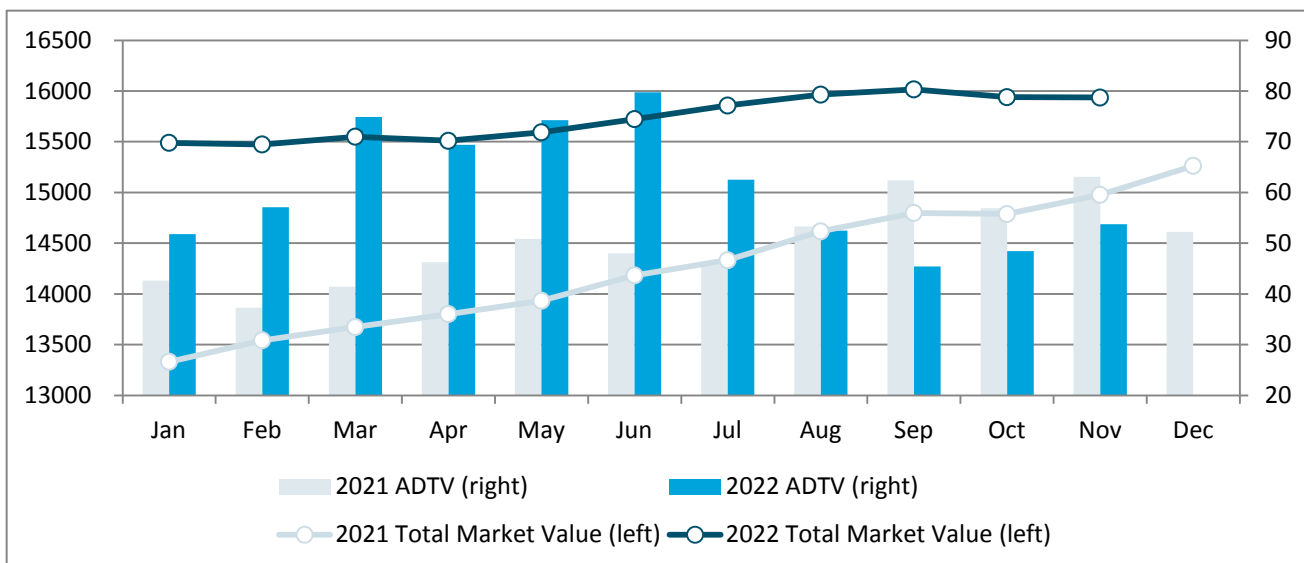
### Monthly Northbound and Southbound Net Inflow (RMB bn)



### Bond Market

Bond Types	Market Value (RMB bn)	MoM Change	Average Daily Trading Value (RMB bn)	MoM Change
Treasury bonds	891.08	0.42%	3.20	-12.50%
Local government bonds	1117.67	-0.76%	1.17	43.43%
Financial bonds	101.53	-1.44%	0.05	-40.51%
Corporate bonds	10822.29	-0.66%	4.17	11.95%
Enterprise bonds	969.75	0.34%	26.70	18.17%
Convertible bonds	647.44	4.52%	18.17	5.52%
Asset-backed securities	1385.96	3.20%	0.29	-18.09%
<b>Total</b>	<b>15935.72</b>	<b>-0.02%</b>	<b>53.75</b>	<b>10.94%</b>

### Monthly Total Market Value and Average Daily Trading Value (RMB bn)

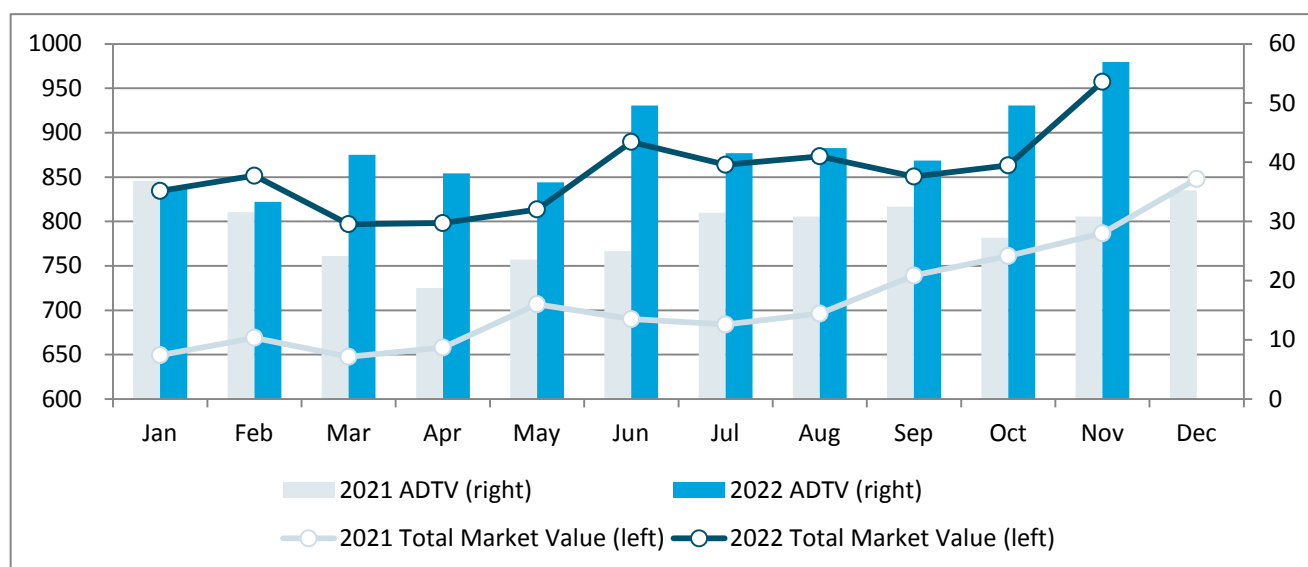


## ETF Market

ETF Types	No. of ETFs	Free-float Market Value (RMB bn)	MoM Change	Average Daily Trading Value (RMB bn)	MoM Change
Equity ETF	377	761.55	11.18%	29.05	6.92%
Bond ETF	12	27.07	-24.50%	9.51	15.52%
Commodity ETF (gold)	8	10.58	8.26%	1.50	17.47%
Cross-Border ETF	47	135.45	20.67%	16.64	31.08%
Publicly Offered Infrastructure REITs	14	22.66	11.80%	0.24	1.76%
<b>Total</b>	<b>458</b>	<b>957.31</b>	<b>10.91%</b>	<b>56.93</b>	<b>14.78%</b>

Note: Exchange-traded money market funds are not included

### Monthly Total Market Value and Average Daily Trading Value (RMB bn)

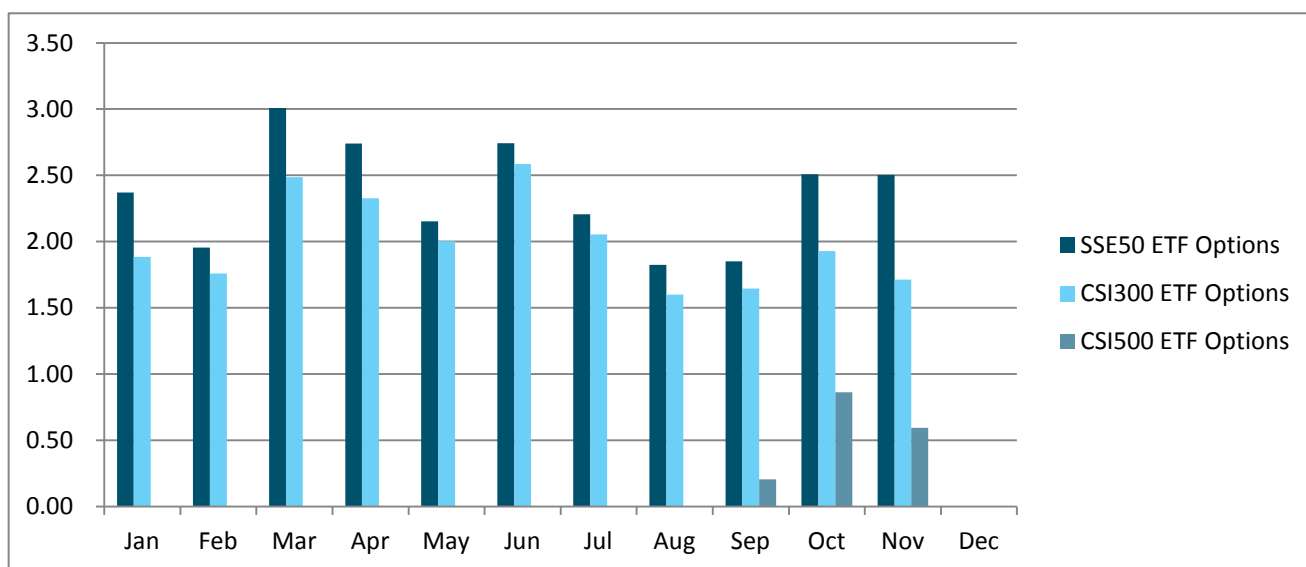


Note: Exchange-traded money market funds are not included

## Derivatives Market

Options	Average Daily No. of Contracts Traded (mn)	MoM Change	No. of Call Options Contracts (mn)	MoM Change	No. of Put Options Contracts (mn)	MoM Change	Put/Call Ratio
SSE 50ETF Options	2.50	-0.25%	1.41	4.28%	1.09	-5.57%	77.00%
CSI 300 ETF Options	1.71	-11.21%	0.91	-7.66%	0.81	-14.88%	88.99%
CSI 500 ETF Options	0.59	-31.06%	0.32	-28.35%	0.28	-33.94%	86.63%

### Monthly Average Daily No. of Contracts Traded (mn)



## Newly Listed Companies

Code	Name	Industry	Market Cap. (RMB bn)	Listing Day Return
<b>Main Board</b>				
603130.SH	Zhejiang Yunzhongma Co., Ltd.	Textiles	4.59	44.02%
603280.SH	Fujian South Highway Machinery Co., Ltd.	Construction & Farm Machinery & Heavy Trucks	3.13	44.00%
<b>STAR Market</b>				
688362.SH	Forehope Electronic (Ningbo) Co., Ltd.	Electronic Equipment & Instruments	11.41	62.03%
688376.SH	Mayair Technology (China) Co., Ltd.	Electrical Components & Equipment	4.04	29.15%
688419.SH	Nextool Technology Co., Ltd.	Electrical Components & Equipment	3.17	19.13%
688432.SH	Grinm Semiconductor Materials Co., Ltd.	Semiconductors	20.16	91.73%
688480.SH	Science Environmental Protection Co., Ltd.	Environmental & Facilities Services	2.25	33.11%

Edited by LI Tianfang, CHEN Yinghui, and WAN Sijia, Dept. of International Affairs, Shanghai Stock Exchange.

**Global Investor Services Team**

**Dept. of International Affairs**

Shanghai Stock Exchange | 上海证券交易所

此文件仅发给指定收件人或机构。其内容可能包含某种享有法律特权或者需要保密的信息。对于任何未经本所明确书面授权而对本文件所载内容进行使用、披露、分发、变更之行为及由此产生的后果，本所概不承担任何责任。如您并非此文件的指定收件人或机构，请立即通知上海证券交易所，并立即销毁此文件。谢谢合作。一旦您收悉此邮件（传真），即表示无条件同意并接受上述所载的免责声明，以及上海证劵交易所在无需给予任何理由或事先通知的情况下，可随时修改、更新、变更或增补本免责声明。

The information contained in this communication is intended solely for the use of the individual or entity to whom it is addressed. It may contain legally privileged or confidential information. The Shanghai Stock Exchange is not liable for any use, disclosure, distribution of or alteration to the contents of this information that has not been expressly authorized in writing by the Shanghai Stock Exchange. If you are not the intended recipient, please inform the Shanghai Stock Exchange of the error and delete the contents immediately. Thank you.

By receiving the email (fax), you expressly agree to the disclaimer above and that the Shanghai Stock Exchange may modify, update, revise or supplement the disclaimer at any time without giving any reason or prior notice.